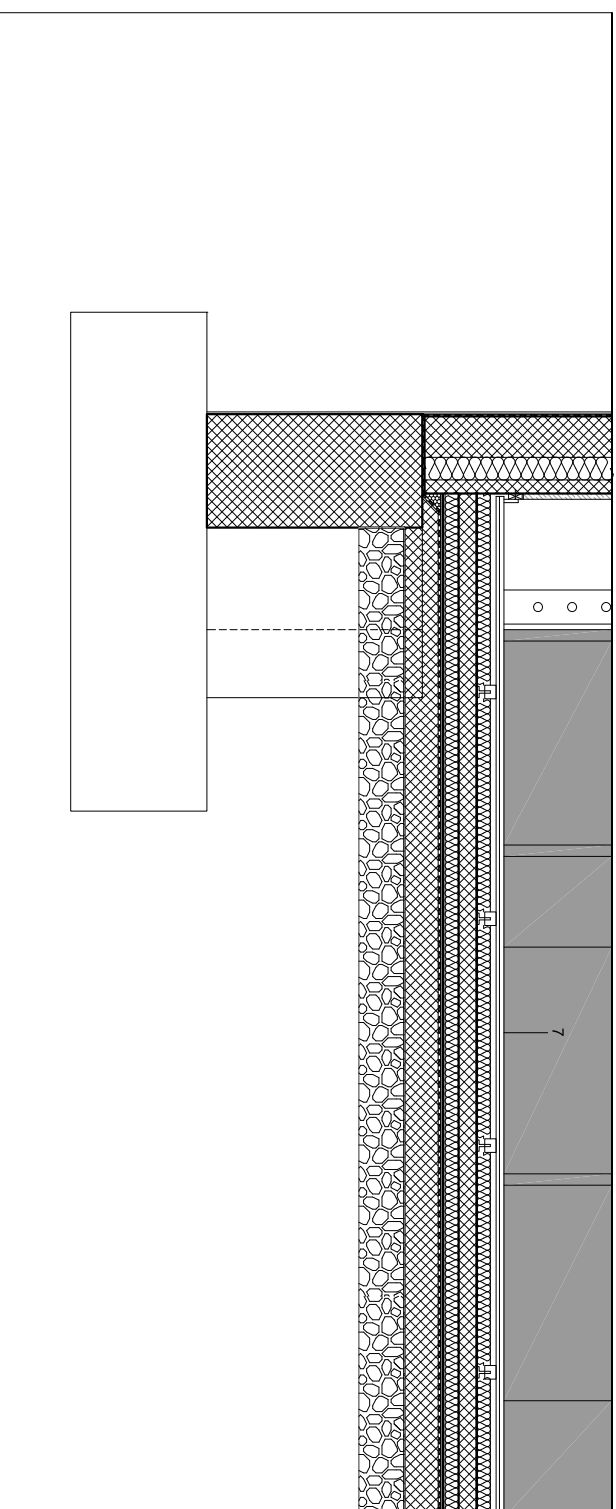
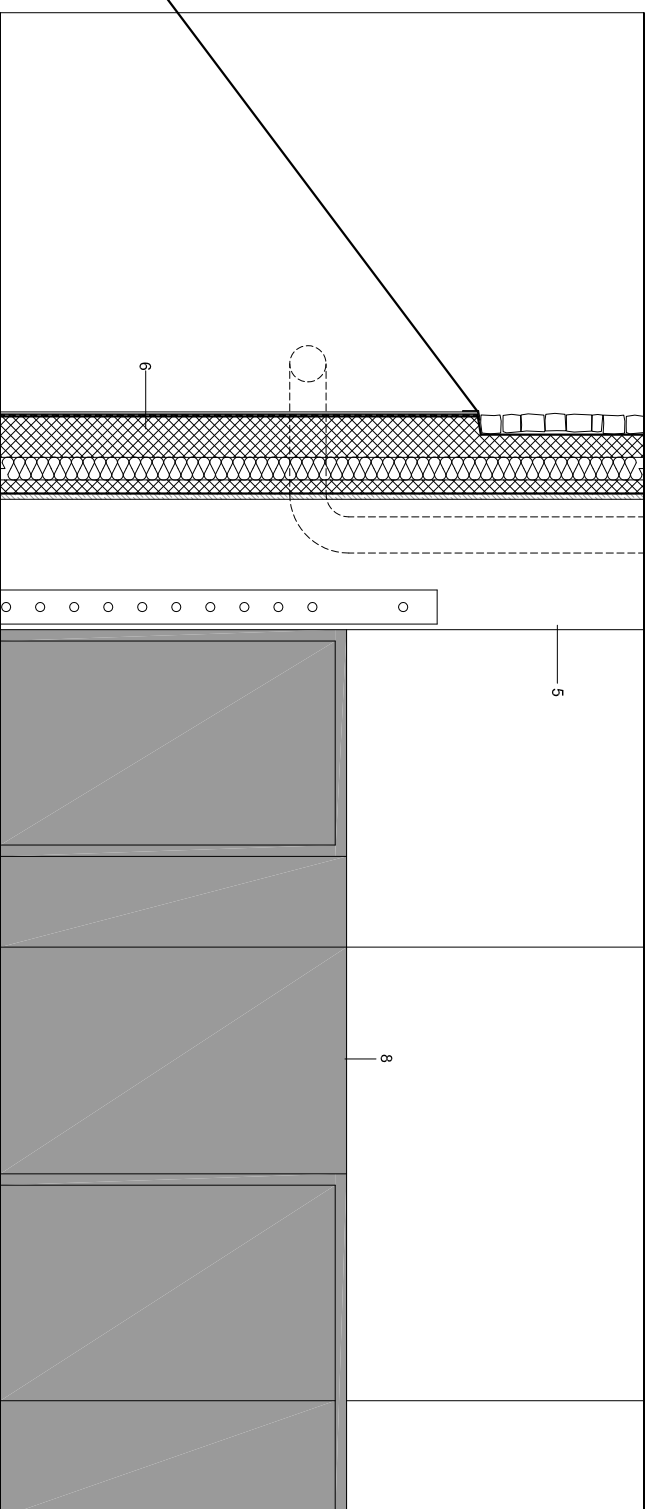
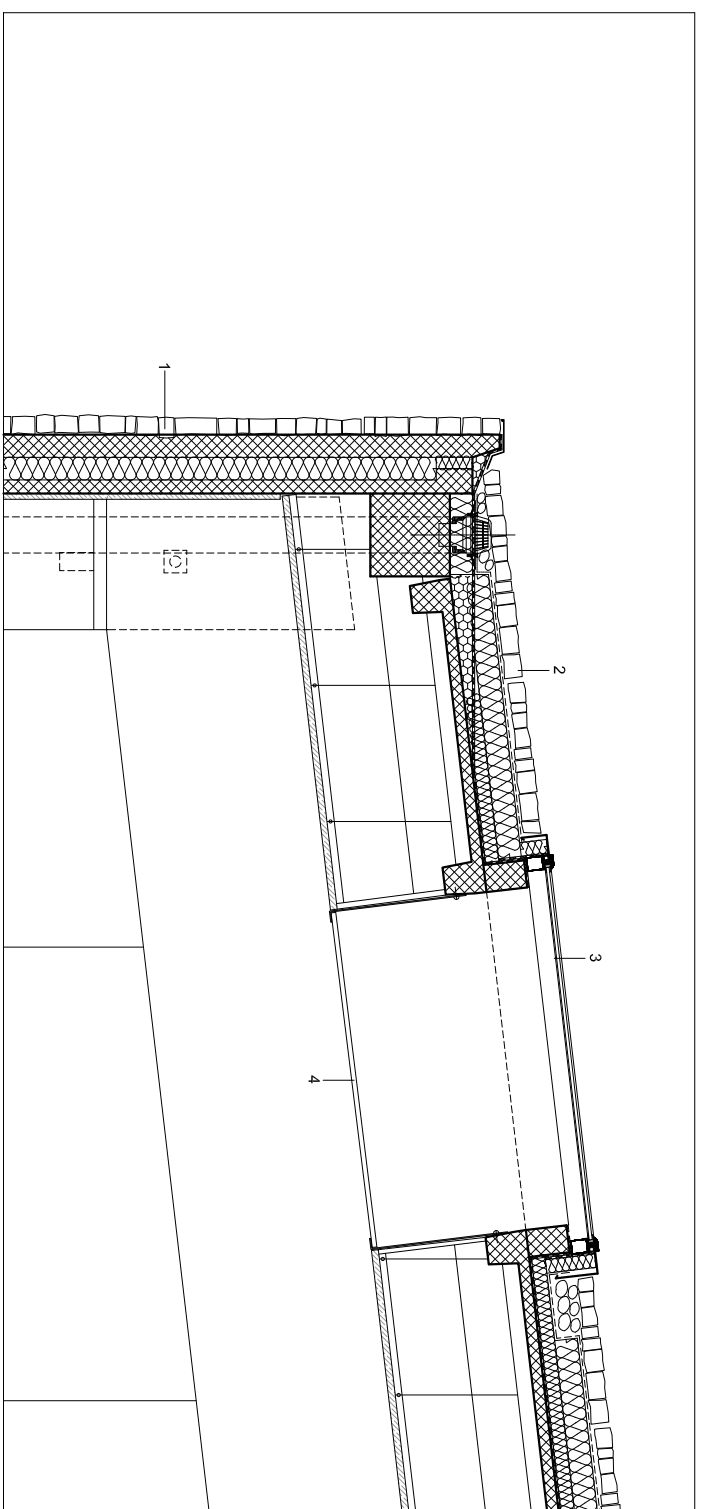


- 1 precast concrete facade element
- 8 cm stone
- 10 cm reinforced concrete
- 10 cm expanded polystyrene insulation
- 6 cm smooth faced reinforced concrete
- 2.5 cm wood wool acoustic panel
- 2 roof construction
- 8 cm layer of broken stone
- 0.2 cm geotextile membrane
- 10 cm expanded polystyrene insulation 10 cm
- 6 cm extruded rigid foam polystyrene insulation
- polymeric roofing membrane
- 18 cm precast reinforced concrete slab
- 3.5 cm wood wool acoustic panel
- 3 roof light: low-E double insulating glazing
- 4 2.5 cm polycarbonate cellular roof light strip
- 5 precast reinforced concrete column
- 6 precast facade element in the ground
- 1 cm dimpled membrane
- bituminous sealing layers
- 18 cm reinforced concrete
- 10 cm expanded polystyrene insulation
- 6 cm smooth faced reinforced concrete
- 2.5 cm wood wool acoustic panel
- 7 sport floor construction
- 12 cm parquet and 3-layer softwood subfloor on neopren pads
- 15 cm reinforced concrete slab
- vapour barrier
- 6 cm expanded polystyrene insulation
- 2 cm Impact sound insulation
- bituminous sealing layers
- 10 cm reinforced concrete levelling
- 20 cm bed of gravel
- 8 6 cm foam plastic cushion with fabric on support board



scale 0 50 100 200 cm

12 section / details

Bale Sports Hall