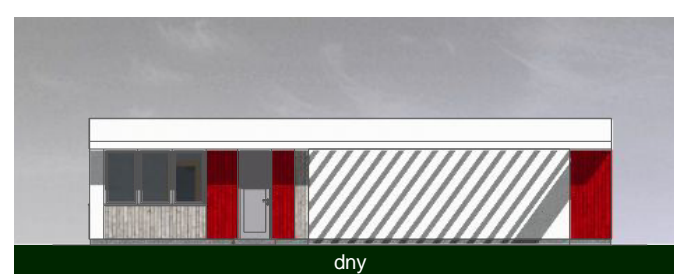
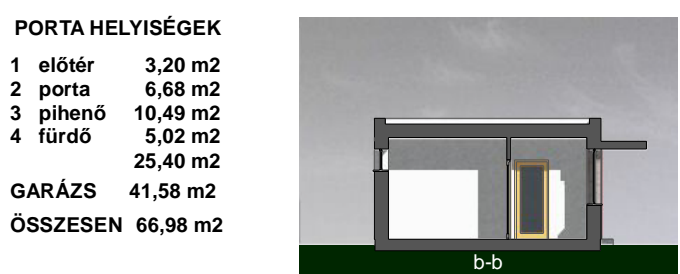
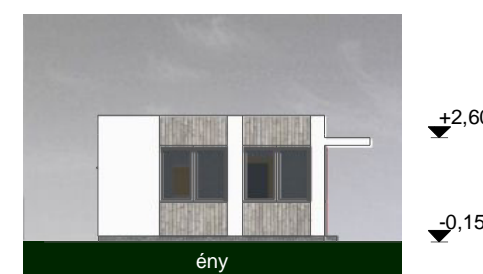
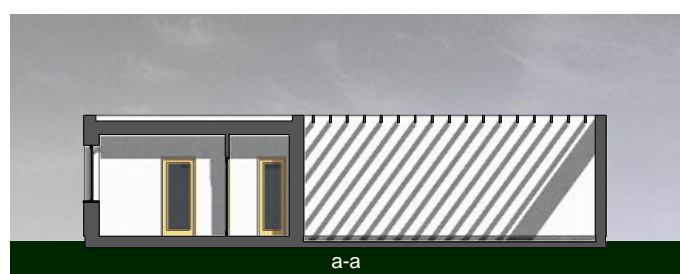
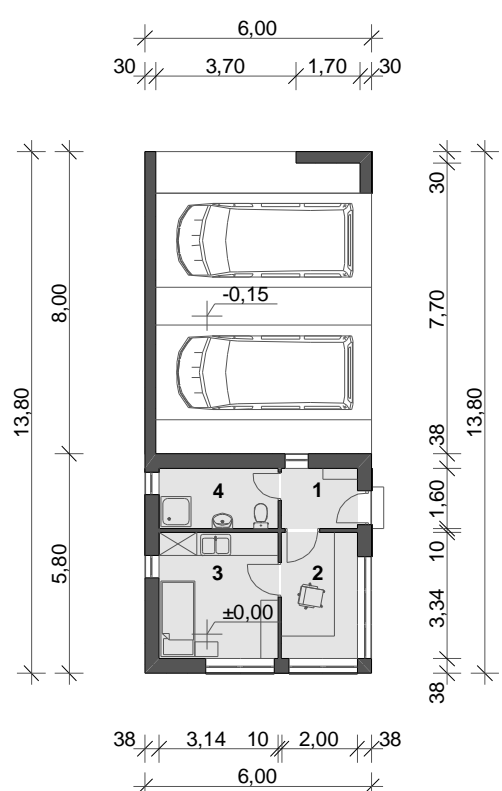


tetőszinti alaprajz m=1:200



PORTA HELYSÉGEK

1 előtér	3,20 m ²
2 porta	6,68 m ²
3 pihenő	10,49 m ²
4 fürdő	5,02 m ²
GARÁZS	41,58 m²
ÖSSZESEN	66,98 m²

porta és garázs épületének terve m=1:200