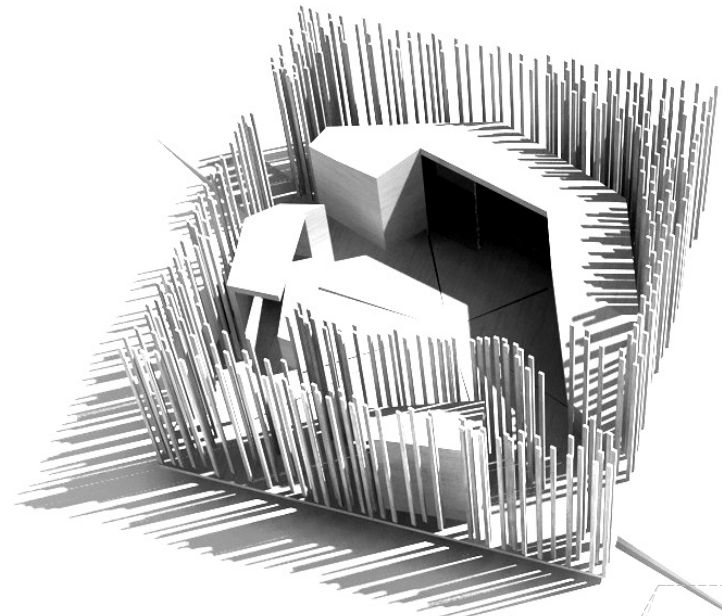
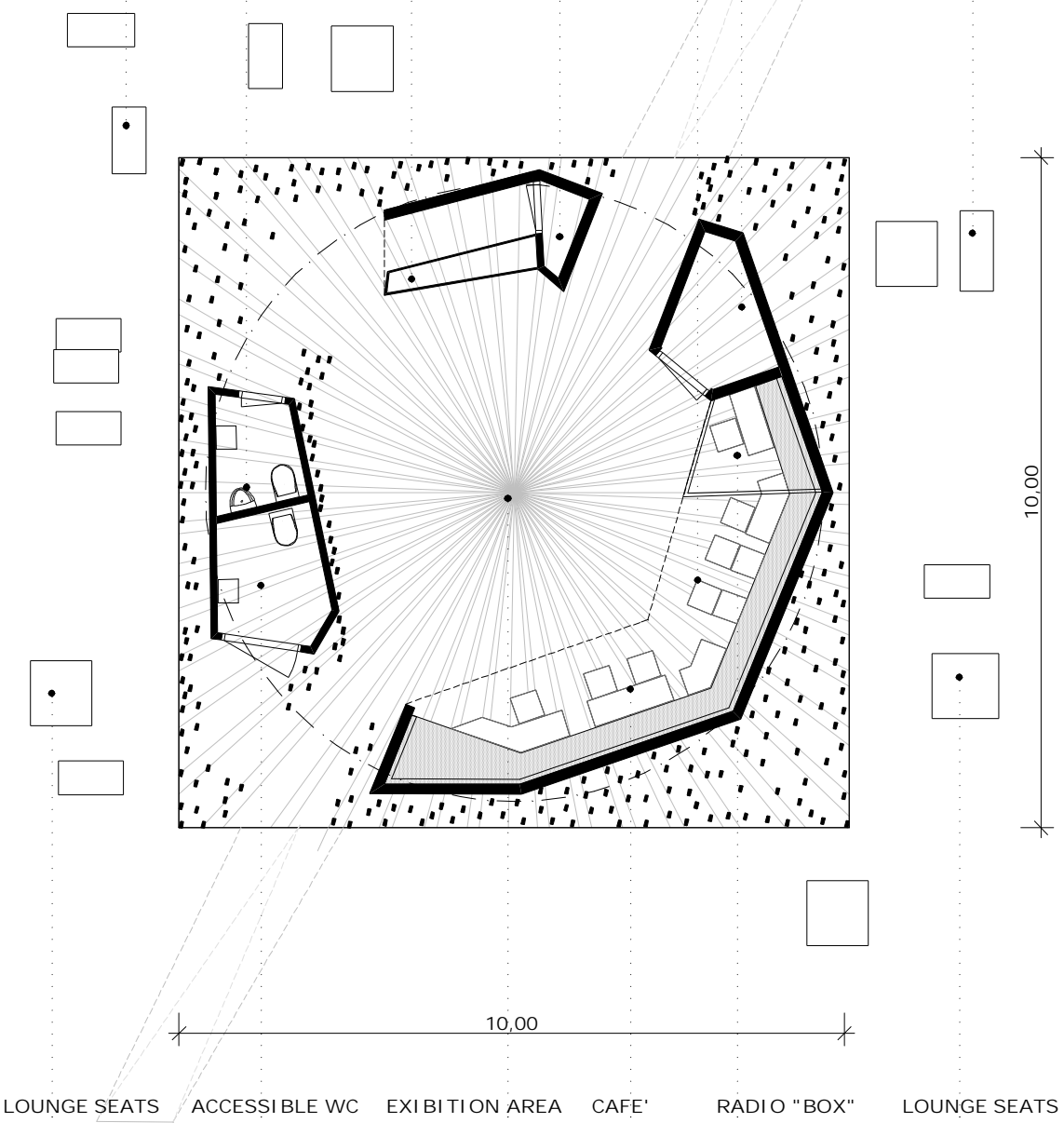
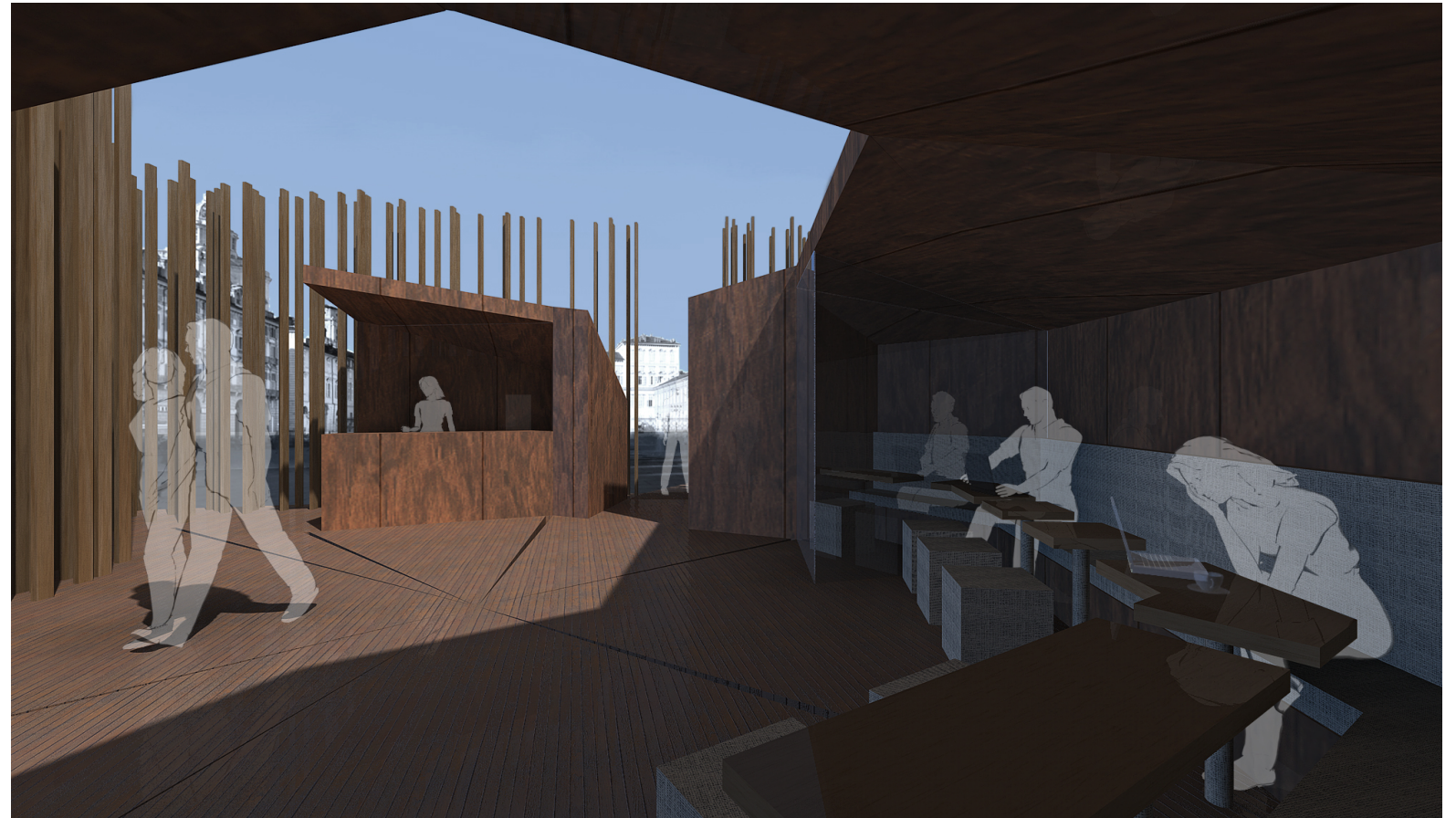


the glade



LOUNGE SEATS WC CAFE' DESK STORAGE PRESS STORAGE LOUNGE SEATS





**the glade**

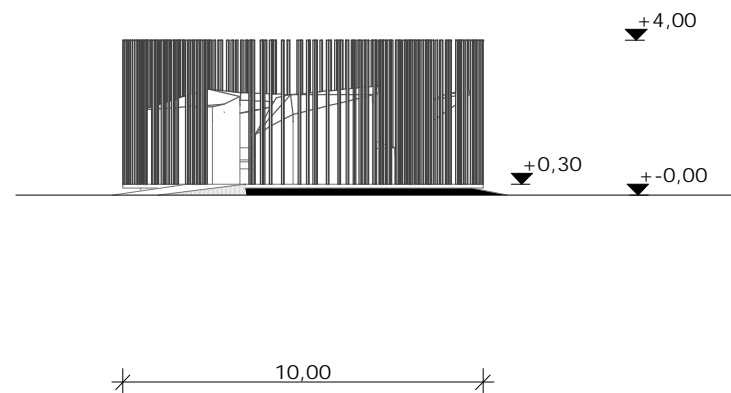
from outside:

It placed itself in the middle of the center line  
 It's a mystery.....mystery of an object  
 It doesn't want to drive you, it does show itself  
 It gives you a chance to find out, to discover it  
 with a warm sensitive voice.....

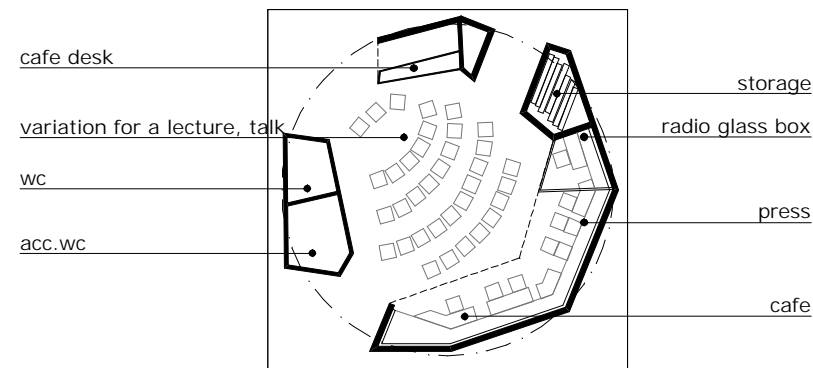
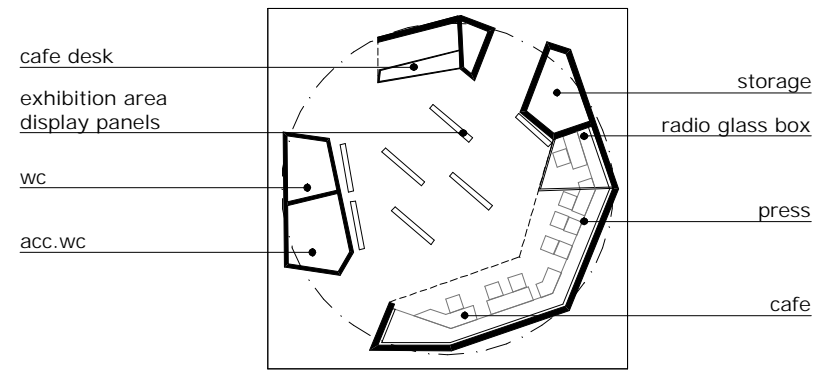
from inside:

the glade is a station between your past and  
 your future.....  
 it separated from the out, gives you an atmosphere  
 to be relaxed, meditated,.....thoughtful  
 so you very welcome on the board! Stop in  
 for a while, than flow away with positive  
 waves on your way.....

**dimensions**



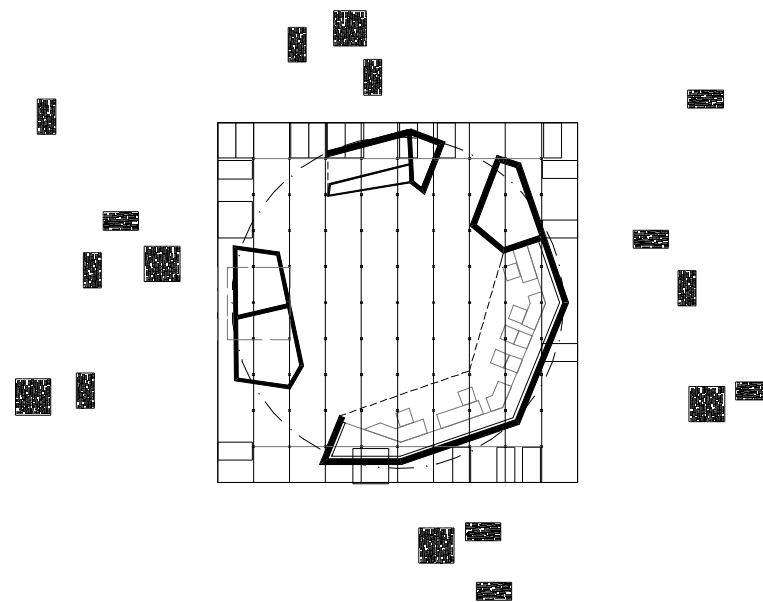
**variability of the glade**



**the lounge seats**

-the lounge seat is a wooden box with a size of 45x45cm & 90x90cm  
 -it has..... soft surface  
 -it has..... castor-wheels  
 -it can..... pull easily

underneath of the deck we placed lounge seats which can pull out and can take it to somewhere where is the most comfortable for the "traveller"



**main structure elements**

the object can easily build up at the square from pre fabricated elements, which needs to be screwed together and some of that needs to be painted against corrosion. The electricity wires, cables, drain pipes and also the sewage water tank easily lined and placed underneath the board.

the estimated budget is around a hundred thousand euro.

there are three main parts of the glade.

- board : steel frame structure with timber paving the timber elements laid with gaps to let the rain water run through the board
- "forest" layer elements (laminated timber)

these parts easily screwed to steel pieces which weld to steel platform hold by the board structure

- timber "boxes" (cafe, cafe desk, storages, wc)

timber frame structures with heatproof materials with air ventilation and exterior timber cladding (red cedar) on walls and roofs both.

all timber parts is impregnated against : insects, fire, wet

