

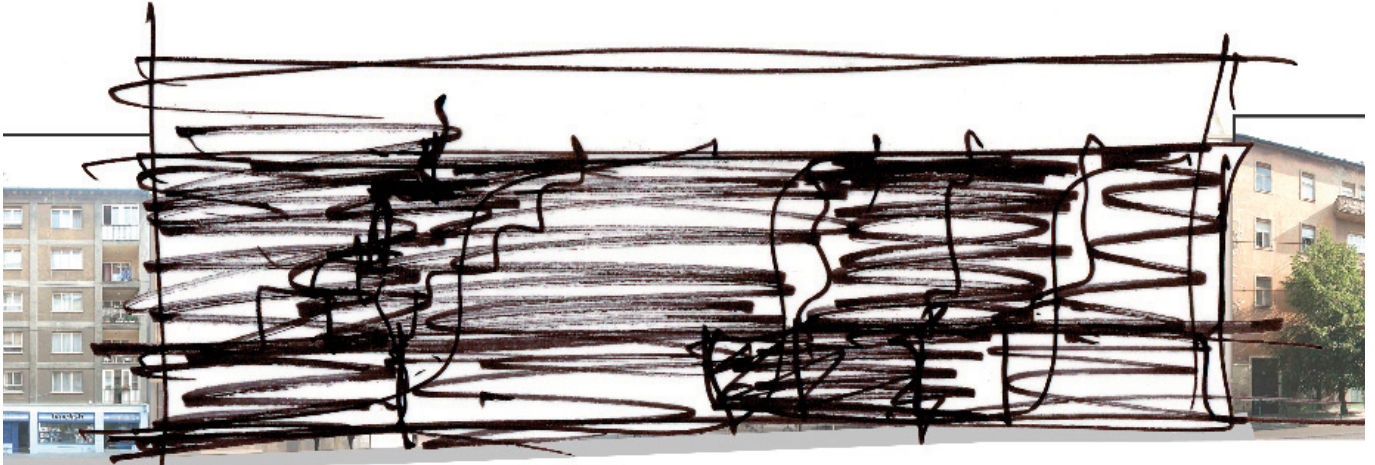
DOMINIQUE PERRAULT ARCHITECTURE



KRISZTINA PALACE PRESS KIT

Press release	p 2
Technical data	p 3
Contact sheet	p 4
Key works 2008-2010	p 5
Projects in progress	p 12
Key works 1980-2008	p 13
Biography, exhibitions and forthcoming publications	p 14

PRESS RELEASE



Study sketch of the façade - 2007

Krisztina Palace, across 27,693 m², is designed to fit with the existing architecture of the street and to blend with the two buildings in which it is set. The office building is being constructed within a geometric continuation of the street's side.

Based on a steep road, going down the street, the scales of the façade show their side made of glass. Climbing up, the passer by sees the metallic side of the façade. This set of relief creates a movement of lights and shadows on the façade, but also reinforces the curtain wall's integration into the existing architecture, with buildings made of stone and plaster.

The pleated façade extends into the roof to create a sculpted volume. The basement is fully glassed, opening the ground floor on the street and offering a wide transparency and deep on the inner courtyard. The variation of transparent and opaque elements corresponds to the signage of the entrances to the building and the lateral connections with the existing system.

The signage creates a rhythm that breaks the length of the building and adapts it to the existing buildings' scale. From the entrance hall, visitors access an ambulatory device leading to the vertical accesses of the building and opening onto the inner courtyard. This central area will be built partly in stone, but also planted with clumps of bamboo.

The contemporary architecture with its façade of glass and metal is coherent with the character of the urban district. It is integrated whilst remaining distinct through its style and character without ever aiming becoming an ostentatious architecture or technical.

Dominique Perrault

Domnique Perrault Architecture

6, rue Bouvier

75011 Paris, France

T: +33 (1) 44 06 00 00

F: +33 (1) 44 06 00 01

presse@d-p-a.fr

www.perraultarchitecte.com

For media enquiries, please contact

Roya Nasser

Roya Nasser Communication

30, rue Vieille du Temple

75004 Paris, France

M: +33 (6) 24 97 72 29

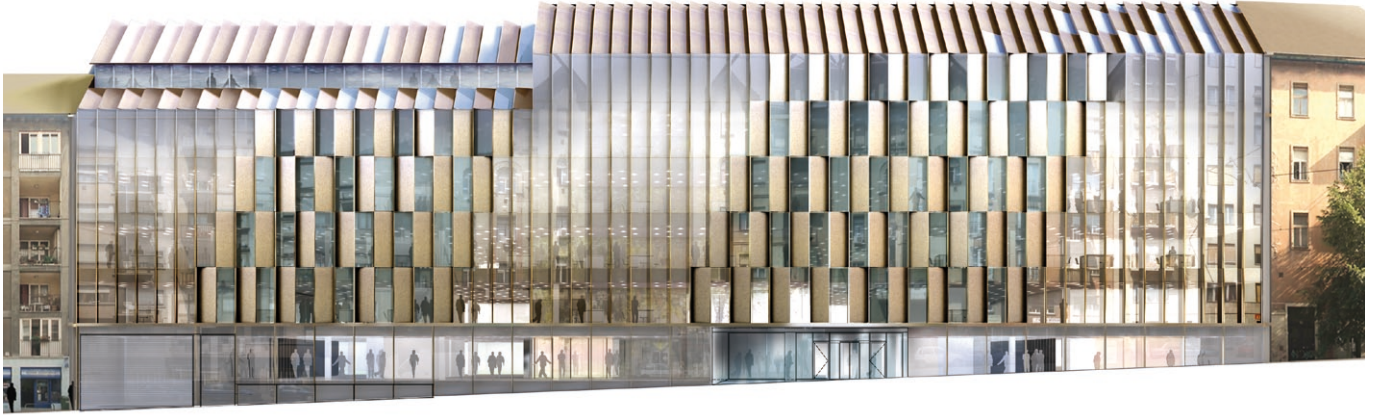
rn@royanasser.com

KRISZTINA PALACE

BUDAPEST, HUNGARY

Direct order, August 2007, estimated completion September 2009

30 03 2009



client CODIC International S.A.

contact Mr.Uzgen Gabriel, CODIC Hungary Kft., Szt. István tér 11/b, H-1051 Budapest, Hungary tel: +36 1 266 60 00

architecte Dezső Ekler, Budapest
Dominique Perrault Architecture, Paris

location Nagyenyed ucta 8-14, 1126 Budapest, Hungary

site area 5,452 m²

built area 27,693 m²

built volume 16,790 m³

beginning of conceptual design August 2007

beginning of construction 2008

estimated construction period 12 months

programme

The Krisztina Palace façade project is established in the Nagyenyed street context, but in the meanwhile the project keeps its contemporary language and its independence.

The façade is made by one element, with a minimalist and elegant design, which is successively closed and glassed.

Its design partially irregular gives to the building its particular nature.

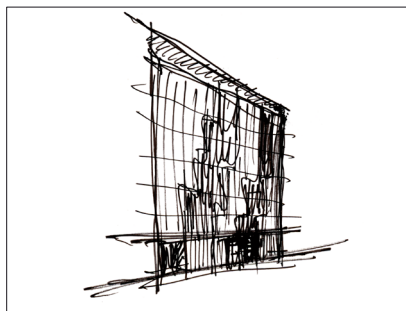
The façade becomes distinguishable thanks to its highly sculptured shape. The project finds its continuity with the mansard roof treatment.

The entrance hall gives a welcoming view to the central court of the building, which is a common architectural motif in Budapest.

KRISZTINA PALACE, BUDAPEST, HUNGARY

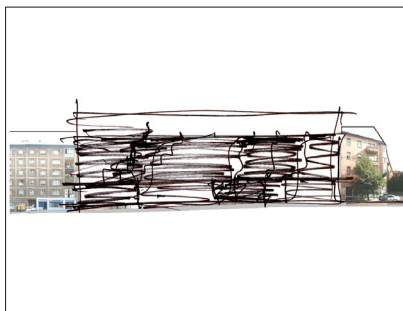
IMAGES ARE AVAILABLE ON FTP SITE :

ftp://d-p-a.fr, login : publication, password : perraultdpa2009



Conceptual sketch
of the project - 2007

KRI_Croquis_DP_01.jpg
© Dominique Perrault / Adagp



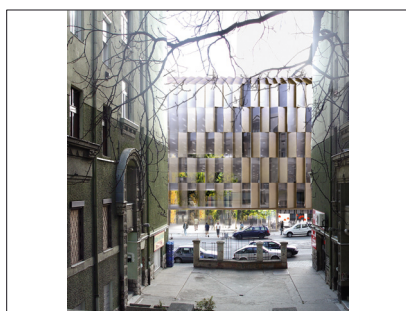
Façade study
sketch - 2007

KRI_Croquis_DP_02.jpg
© Dominique Perrault / Adagp



Façade
render - 2007

KRI_0707_PP_01.jpg
© Perrault Projets / Adagp



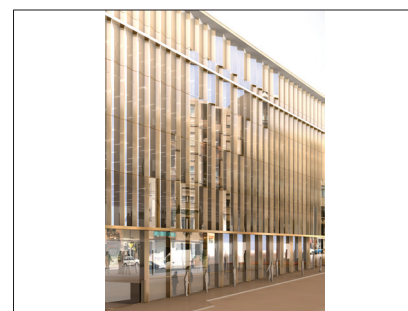
Façade view from
a front courtyard - 2007

KRI_0707_PP_02.jpg
© Perrault Projets / Adagp



West view of the metallic or glassed scales
of the façade - 2007

KRI_0707_PP_03.jpg
© Perrault Projets / Adagp



East view of the metallic or glassed scales
of the façade - 2007

KRI_0702_PP_07.jpg
© Perrault Projets / Adagp



East view of the
construction site - 2009

KRI_0902_PP_01.jpg
© Perrault Projets / Adagp



West view of the
construction site - 2009

KRI_0902_PP_02.jpg
© Perrault Projets / Adagp



Front view of the
construction site - 2009

KRI_0903_PP_06.jpg
© Perrault Projets / Adagp



East view of the
construction site - 2009

KRI_0903_PP_07.jpg
© Perrault Projets / Adagp



Detail of the
façade - 2009

KRI_0903_PP_04b.jpg
© Perrault Projets / Adagp

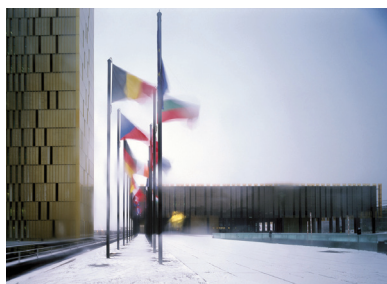
KEY WORKS

2008-2009



EWHA WOMEN'S UNIVERSITY SEOUL, SOUTH KOREA

March 2008



COURT OF JUSTICE OF THE EUROPEAN COMMUNITIES LUXEMBOURG CITY, LUXEMBOURG

December 2008



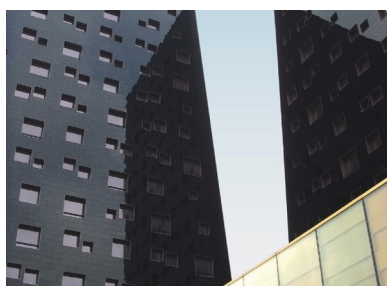
ME BARCELONA HOTEL BARCELONA, SPAIN

October 2008



OLYMPIC TENNIS CENTRE MADRID, SPAIN

April 2009



NH-FIERAMILANO HOTEL, 4* MILAN, ITALY

May 2009



ONIX OFFICE BUILDING LILLE, FRANCE

2010

EWHA WOMEN'S UNIVERSITY

SEOUL, SOUTH KOREA

International competition by invitation, winning project February 2004, completion March 2008

11.12.2008



2008

client Campus Center Project T/F, Seoul, South Korea

contact Prof. Miseon Kang / Prof. Yoonhie Lee, 408 Jin-Seon-Mi Hall, Ewha Women's University, 11-1 Daehyundong, Seodaemun-gu, Seoul 120-750, Korea tél. : +82 (0)2 3277-3472, fax : +82 (0)2 3277-3950 Situation 11-1 Daehyundong, Seoul, South Korea

architect Dominique Perrault Architecte, Paris

• **partners** Baum Architects, Séoul

• **engineering** Perrault Projets, Paris (*architectural engineers*); VP&Green Ingénierie, Paris (*structural engineers*); HL-PP Consult, Munich (*Building services*); Jean-Paul Lamoureux, Paris (*acoustic*), Rache-Willms, Aix-la-Chapelle (*facades*)

• **consultant** Jeon and Lee Partners, Seoul (*structural engineer*), HIMEC, Seoul (*mechanical engineer*), CG E&C, Seoul (*civil engineer*), CnK Associates, Seoul (*landscape*)

location 11-1 Daehyundong, Seodaemun_gu, Seoul 120-750, South Korea

site area 50,000 m²

built area 70,000 m²

built volume 350,000 m³

landscaping 31,000 m²

beginning of construction 2004

budget € 120,000,000 excluding taxes (*value 2002*), *local equivalent*

programme «The Campus Valley »

The new campus centre for the University of Ewha was completed in May 2008. It accommodates 20,000 students and includes spaces for study, sport, offices, a cinema and car parks.

green roof

Moderation of the urban heat island effect, improved storm-water management, water and air purification and a reduction in energy consumption.

- Enhanced Ecology - The roof offers dramatic biodiversity benefits including the provision of valuable habitats for nationally important species.
- Mitigation of storm water - The rapid run-off from roof surfaces can often result in flooding or extensive increase in drainage capacity.
- Improved roof temperature - The protection of fluctuations in temperature helps reduce internal energy consumption.

natural resources and renewable energy

80% (winter) and 70% (summer) of the energy demands are provided only by natural resources.

- a thermal labyrinth through the retaining walls (pre-heating and pre-cooling of fresh air)
- ground water energy (pre-cooling of fresh air during summer)
- a heat recovery system
- a Combined Heat and Power Plant

water efficiency

In addition to the above benefits, measures that reduce drinking water consumption have been also included.

- low water using fittings
- rainwater collection: rainwater is collected from the roof, stored, and then used as the needs arise.

data

- academic programme:
 - learning and sport space,
 - library,
 - cafeteria.
- administration programme,
- commercial area,

- sustainable programme:
 - green roof,
 - renewable energy,
 - water efficiency.
- outdoor sports area,
- parking area.

COURT OF JUSTICE OF THE EUROPEAN COMMUNITIES

LUXEMBOURG CITY, LUXEMBOURG

International competition, winning project 1996, completed 4 December 2008

09.12.2008



2008

client European Court of Justice

contact Mr. Fernand Otto, director, administration des Bâtiments Publics,
10 rue du St. Esprit, L-1475 Luxembourg; tel: +35 (2) 46 19 19-1, fax: +35 (2) 46 19 19 32-3

architect Dominique Perrault Architecte, Paris

- **associated architects** Bureau CJ4 (*Dominique Perrault Architecte, Paczowski & Fritsch, m3 architectes*), Luxembourg
- **engineers** Perrault Projets (*architectural engineering*); Ralf Rache (*façades*); Jean-Paul Lamoureux (*acoustics & lighting*); Gehl, Jacoby & Associés SA, Schroeder & Associés SA, TR-Engineering SA, (*civil engineering*); Felgen & Associés SA, Bevilacqua & Associés SA, (*electrical engineering*); Jean Schmit Engineering SARL (*thermal engineering*); RMC-consulting (*sanitary engineering*); Cabinet Casso et cie (*security*); AIB Vinçotte Luxembourg asbl, Secolux (*technical control*); Geprolux SA (*coordinator*)
- **project pilot** Geprolux SA, Luxembourg

location Kirchberg platform, Grand Duché du Luxembourg

site surface 76,000 m²

built surface 100,000 m²

built volume 380,000 m³

urban design square and spaces related to the tramway

start of final design June 2002

construction start April 2004

duration of construction 4 years

programme

- The former palace, 20,168 m²: asbestos removal and entire rehabilitation of the metal structure, 5 courtrooms including a great formal room (*41 members and 300 seats*), translation booths, adjoining deliberation rooms and hall of low courts.
- The ring, 16,851 m²: offices dedicated to the law offices (*judges, Advocates General and their colleagues*), 40 member offices, great deliberation room.
- The towers, 34,208 m²: offices on 24 floors (*107 meters high*) for all translation services (*1,000 persons and 23 languages*).
- Building at the foot of the towers, 5,079 m²: administration offices, additional services, archives.
- The gallery, 24,131 m²: vertebral column which ensures the functional unity between the former buildings and the newer constructions. It contains the restaurants, the library (*84 seats and 7.5 km of shelving*), professional training rooms, public services (*kiosks, banks...*) gives direct access to the towers, the ring and the Court-house.
- The public esplanade and the parking area, 23,589 m²: it leads to the main entrance of the Court, in the axis of the Rue Charles-Léon Hammes. 700 parking spaces are located under the esplanade for the used of the Court members.

ME BARCELONA HOTEL

BARCELONA, SPAIN

direct order 1999, completion october 2008

30.03.2009



2008

client Hoteles Sol-Melià, Palma de Mallorca, Spain

contact M. Alex Augot, Director, Hotel Me Barcelona,
Diagonal/ Pere IV 272-286, E-08005 Barcelona, Spain, tél: +34 93 367 20 50

architect Dominique Perrault Architecte, Paris.

- **partners** Corada Figueras Arquitectos, Barcelona
- **local architect** AIA Salazar-Navarro, Barcelona
- **engineering** Perrault Projets, Paris (*architectural engineering*) BOMA Robert Brufau i Associats, Barcelone (*structure*), AIA Salzar-Navarro, Barcelone (*fluids*), Querol & Colomer, Barcelona (*acoustics consultant*)
- **project manager** Tag Management (*project management*)
- **technical controller** Socotec Iberia, Barcelone

location Av. Nueva Diagonal, C/ Pere IV, Barcelona, Spain

site area 3,230 m²

total floor area 28,000 m²

height of the building 112.8 m²

beginning of conceptual design December 1999

beginning of construction Octobre 2005

period of construction 3 years

programme

Designed for the Habitat group in Barcelona and now managed by ME, this hotel integrates the two dimensions that compose the identity of the Catalanian capital: the horizontality of its grid, legacy of the Cerdà plan, extending all the way to the sea, and its dynamic verticality exemplified by the Sagrada Família and Mount Tibidabo looming over the sight.

The tower is composed of two volumes stuck together: a "cubic" building acting as a counterpoint and a tower 120 m high, a rectangular parallelepiped cut lengthwise in two. A cantilever, 20 m above street level, marks the entrance: on the Avinguda Diagonal it serves as the Hotel's identifying signal.

The way these boxes are placed against each other is key to the distribution of the various functions. While the volume located at the back gathers the hotel's collective services, the tower, broad but not deep, houses the 259 guest rooms, each with a clear perspective of the scenery.

This "enormous screen that focus on the city and the landscape" is cut into opaque panels of distinct texture that cover the entire facade, making it come alive in the day and the night.

data

- 259 guest rooms :
- 192 supreme rooms,
- 44 superior rooms,
- 16 suites,
- 6 grand suites,
- 1 sky suite,
- 4 double rooms with acces for disabled people,
- fitness,
- restaurant (300 m²),
- conference centre (1 150 m²),
- swimming pool,
- terraces,
- bar,
- salons,
- administration,
- underground car park.

OLYMPIC TENNIS CENTRE

MADRID, SPAIN

international competition, winning project May 2002, completion May 2009

30.03.2009



2009

client Madrid Espacios y Congresos, Madrid, Spain

contact Madrid Espacios y Congresos, C/Ribera del Sena s/n 28042 Madrid, tel: +34 91 722 04 00, fax: +34 91 721 06 07

architect Dominique Perrault Architecte, Paris

- **engineering** Perrault Projets, Paris (*architectural engineering*); TYPSA, Madrid (*structure and installations*)
- **project manager** LKS, Madrid

location Parque del Manzanares, Madrid, Spain

site area 16.5 ha (40.77 acres)

built area 100,000 m²

built volume 1,051,680 m³ (225,000 m³ tennis indoor and 826,680 m³ Caja Magica)

beginning of conceptual design 2002

beginning of construction April 2006

construction period 3 years

estimated project cost € 120,000,000 excluding taxes (*value 2002*)

programme

In the prospect of being a candidate for staging the Olympic Games in 2016, the Spanish capital has begun a campaign to build spectacular facilities among the Olympic Tennis Centre. Working in an indistinct peripheral area, the issue at stake was not so much to design a building as to stage manage architecture and invent scenery.

The “magic box” concept encloses sports and multi-functional buildings but opens up and shapes itself to the various uses projecting a changing and lively silhouette in the cityscape. Its mobile and vibrant skin filters the sunlight, serves as a windbreak and shelters the sports halls in a lightweight shell.

Water forms a lake to define a wide horizontal plane of reference, like a huge natural mirror. Islands (*pieces of dry or verdant nature depending on their irrigation*) invite to the pleasure of calm walks or sports activities. The walks proceed over footbridges, pontoons and wide places, opening viewpoints on the surrounding scenery.

All told an architectural landscape that flows and ripples like a garment, a place for strolling and having fun, a venue that is alive day and night.

NH-FIERAMILANO HOTEL, 4*

MILAN, ITALY

international competition by invitation, winning project April 2006, completion May 2009

11.02.2008



2009

client Sviluppo Sistema Fiera e Fondazione Fiera Milano, Largo Domodossola 1, 20 145 Milano, tel: +39 02 49 97 1

team leader Consorzio Cooperative Costruzioni, Milano; Cooperativa Muratori e Braccianti di Carpi, Milano

• **architect** Dominique Perrault Architecte, Paris

• **engineering** Ing. D. Insinga (*structure*), Pool Professionale Milan (*fluids*), Sinesis (*architectural engineering*), Marion Consulting (*façades*), Luca Bergo (*architectural consultant*)

location Fiera di Milano, Rho-Però, Milano

site area 15,000 m²

built area 23,800 m²

beginning of conceptual design May 2006

beginning of construction October 2006

construction period 2.5 years

project cost € 33,000,000 excluding taxes (*value 2009*)

programme

The project for two hotels in the new Trade Fair in Rho-Però, Milan is in line with the City's architectural building tradition. Two pure geometric forms – two black and white square-based parallelepipeds, which are sixty metres tall and set together at an angle, emerge from the horizontal landscape of the new trade fair. The radical pureness of the two buildings embodies the most deeply entrenched Milanese characteristics, sobriety and simplicity. The hotels also recall the vernacular style of Bologna and San Gimignano.

The two structures are located at the main hub of the orthogonal plan. Each tower is inclined at an angle of 5 degrees: the taller tower facing the Trade Fair to the north, the second, leaning over, marks the pedestrian entrance way. The cross is formed by two large semi transparent arms. The transparency of the walls varies with the light and always flows in one direction. The cross sets out the entrances to the floors of the two towers holding the rooms and also the corridors connecting the various refreshment services and facilities: bar, brasserie, restaurant, banquet rooms and meeting rooms are easy to identify and reach through the spacious lobby, which extends seamlessly into the towers through two wide gaps.

The main entrances to the reception facility are at two ends of the arms of the cross. The reception is near the centre and instantly visible and recognisable. The bases of the tower are at the two other ends, with two entrance ramps to the levels holding the communal facilities and, above them, the floors of 3-star hotel rooms to the west and 4-star rooms to the east of the cross. The canopy, made of steel portals supporting a light roof made of serigraphed glass, connects the entrance gate to the conference centre, to the hotel cross and then continues on to the level of the car park level and a public area landscaped with greenery.

The two 20 floor and 18 floor hotels are the tallest buildings on the new trade fair landscape. They form a simple yet powerful landmark. They are two-tone. Black on the East and North facades, they are an immaculate white to the South and West.

The two structures resemble two bright marble monoliths from a distance. Drawing nearer, it can be seen that the fronts are fitted with various size windows forming irregular patterns on the facades.

ONIX OFFICE BUILDING

LILLE, FRANCE

direct order, July 2006, estimated completion 2010

31.03.2009



2007

client CODIC, 58, av. Marceau 75008 Paris; VINCI Immobilier, 213, boulevard de Turin, 59777 Lille

contact Mr. Sirot, CODIC, 24/26, boulevard Carnot B.P. 37, tel: +33 (0)3 28 38 16 00, Mr. Tanchou, VINCI Immobilier, 213, boulevard de Turin, tel: +33 (0)3 20 88 76 00, fax: +33 (0)3 20 88 76 09

architecte Dominique Perrault Architecture, Paris

• **engineering** Terrell International (*structures*), INEX (*fluids HQE*), Jean-Paul Lamoureux (*lighting and acoustics*), RPO (*economist*), Marion Consulting (*façades*).

location Euralille 2, lot 10,5 - b,c, rue Willy Brandt

site area 3.380 m²

built area 16.000 m² + 10.900 m² underground

built volume 57.000 m³

beginning of conceptual design July 2006

beginning of construction January 2008

estimated construction period 18 months

estimated project cost 27 700 000 € excluding taxes (*value January 2008*)

program

Benefiting from its strategic location in the Euralille district, this office building conjugates high visibility and easy accessibility.

A bar in movement, of varying thickness, folds, dilates and contracts so as to optimize its occupation of the triangular plot. This modeling of the structure creates open angles for the main entrance and the entrance to the parking garage, located in another volume which is covered with a landscaped garden. Four types of modules of varying widths cover the facade: fixed opaque, opening opaque, fixed glass and sloping glass. The last category, much more utilized on the upper floors, becomes increasingly rarer closer to the ground, where the surface is entirely smooth and transparent. This work of modeling is continued on the roof, where metallic netting conceals the technical equipment and accentuates the streamlining of the volume.

PROJECTS IN PROGRESS

AUSTRIA

- DC Towers, *Vienna, 2004-2012*

SOUTH KOREA

- Residential complex, *Island of Jeju, 2009-2011*

FRANCE

- Office building Onix, *Lille, 2006-2010*
- Sports Complex, *Rouen, 2006-2011*
- Hôtel d'Agglomération, *Perpignan, 2005-2009*
- Office building, *Boulogne Billancourt, 2005-2009*
- Housing, office and commercial building, *ZAC Euralille 2, Lille, 2005-2011*
- Park Inn Hotel, *Porte des Lilas, Paris, 2007-2011*
- Pont de Sevres Towers, *Boulogne-Billancourt, 2007-2014*

ITALY

- San Pellegrino Thermal baths and masterplan, *San Pellegrino, 2008-2012*
- Piazza Garibaldi, *Naples, 2004-2011*
- Urban system of footbridges, *Palermo, 2004-2011*
- Subway of Palermo (9 stations), *Palermo, 2004-2012*
- Cardarelli Hospital, library and reception spaces, *Naples, 2005-2010*

JAPAN

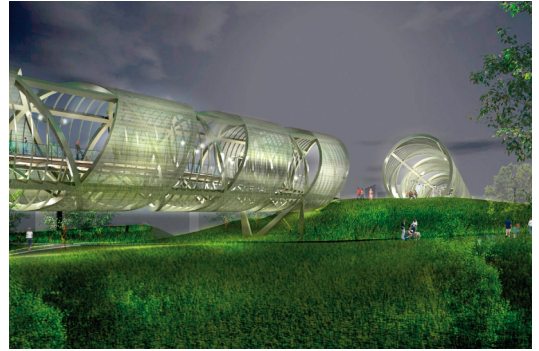
- Fukoku Tower, *Osaka, 2006-2010*
- Yokohama office building, *Yokohama, 2008-2012*

NETHERLANDS

- Housing and offices "La Liberté", *Groningen, 2007-2011*

SPAIN

- Agelco office building, *León, 2006-2010*
- Arganzuela footbridge, *Madrid, 2008-2010*
- Convention centre and exhibition hall, *Leon, 2005-2011*
- High-rise building with 90 apartments, *Durango, Bilbao, 2004-2010*
- Olympic Tennis Centre, Manzanares park, *Madrid, 2002-2009*
- Design of "Las Teresitas" beach and seafront and 5* hotel, *Santa Cruz de Tenerife, 2000-2012*
- Hines office building, *Barcelona, 1999-2009*
- Bernia hotel, *Altea, Alicante, 2007-2012*



Arganzuela footbridge, Madrid, Spain



Convention centre and exhibition hall, León, Spain



DC Towers, Vienna, Austria



San Pellegrino thermal baths, San Pellegrino, Italy



Fukoku Tower, Osaka, Japan

KEY WORKS

1980-2008

AUSTRIA

- Café Lichtblick, terrace of town hall, *Innsbruck, 2002-2005*
- Supermarket for the group MPREIS, *Wattens, 2001-2003*
- Supermarket for the group MREIS, *Zirl, 2001-2002*
- Town hall, offices, commerce and hotel, *Innsbruck, 1996-2004*
- Supermarket MPREIS, *Wattens, 1999-2000*

FRANCE

- Factory Rehabilitation, *Paris, 2004-2007*
- Parking Garage Emile Durkheim, *Paris, 2000-2002*
- Media Library, *Vénissieux, 1997-2001*
- APLIX factory - Industrial manufacturing unit, *Le Cellier, Nantes, 1997-1999*
- The Great Greenhouse for the "Cité des Sciences et de l'Industrie", *Paris, 1995-1997*
- Technical centre of books, *Bussy Saint-Georges, 1993-1995*
- Gallery Denise René, *Paris, 1991*
- National Library of France, *Paris, 1989-1995*
- Mayenne Departmental Archives, *Laval, 1989-1993*
- Meuse Departmental Headquarters, *Bar-le-Duc, 1988-1994*
- Water processing plant, for SAGEP, *Ivry-sur-Seine, 1987-1993*
- Housing building "Le Louis Lumière", *Saint-Quentin-en-Yvelines, 1988-1991*
- Conference centre, *Saint-Germain-en-Laye, 1988-1991*
- Multi-storey industrial building "Hôtel Industriel Berlier", *Paris, 1986-1990*
- ESIEE (academy for engineers of electronics and electrical engineering), *Marne-la-Vallée, 1984-1987*
- Housing estate "Les Caps Horniers", *Rezé-lès-Nantes, 1983-1986*
- Factory Someloir, *Châteaudun, 1981-1983*

GERMANY

- Design of Friedrich-Ebert-Platz, *Düren, 2004*
- Velodrome and Olympic Swimming Pool, *Berlin, 1992-99*

ITALY

- Piazza Gramsci, Cinisello Balsamo, *Milan, 1999-2004*

JAPAN

- Noh Theatre, *Niigata, 2004-2006*

SPAIN

- Montigalà sports complex, *Badalona, Barcelona, 2001*

UNITED KINGDOM

- Priory Park Pavilion, *Reigate, 2005-2008*

UNITED STATES

- Factory GKD-USA, *Cambridge, Maryland, 2004*



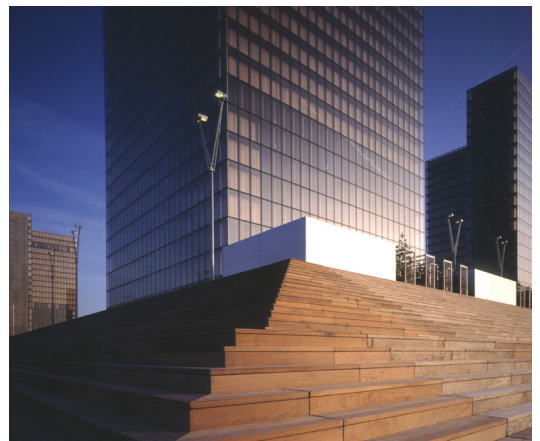
Velodrome and olympic swimming pool, Berlin, Germany



Town hall, offices, commerce and hotel, Innsbruck, Austria



Priory Park Pavilion, Reigate, United Kingdom



French national library, Paris, France

BIOGRAPHY

- 1953** Born in Clermont-Ferrand, France.
- 1973** Enters school of architecture and attends the workshop of Martin van Treck.
- 1978** Diploma in architecture (*Ecole Nationale Supérieure des Beaux-Arts de Paris*).
- 1979** Higher diploma in town planning (*Ecole supérieure des Ponts et Chaussées, Paris*).
- 1980** Postgraduate degree in history (*Ecole des Hautes Etudes en Sciences Sociales, Paris*).
- 1981** Opening of his office in Paris and first built work: factory Someloir in Châteaudun, France.
- 1983** Winner of the 'Program for New Architecture' (*PAN XII*).
- 1984** First notable project: ESIEE (*academy for engineers of electronics and electrical engineering*) for the Chamber of Commerce and Industry of Paris-Marne-la-Vallée.
- 1989** Winner of the international competition for the National Library of France in Paris.
- 1990** Completion of the Hôtel Industriel Jean-Baptiste Berlier, which becomes Dominique Perrault's office. The building receives the "l'Equerre d'argent" in 1990 and the "Constructa Prize" in 1992.
- 1992** Winner of the international competition for the Velodrome and Olympic Swimming Pool in Berlin, Germany.
Opening of an office in Berlin.
- 1993** Great National Prize of Architecture, France.
- 1995** Inauguration of the National Library of France by François Mitterrand (*March*).
- 1996** Winner of the international competition for the Town Hall of Innsbruck in Austria.
- 1997** Mies van der Rohe Pavilion Award for European Architecture, conferred by the Foundation Mies van der Rohe and the European Parliament for the French National Library.
First direct order: factory Aplix in Cellier-sur-Loire, France, which receives the "World Architecture Award" in Hong Kong (*first prize for best industrial building in 2001*).
- 2000** Opening of an office in Luxembourg for the extension of the Court of Justice of the European Communities.
- 2002** Winner of the international competition for the New Olympic Tennis Centre, Madrid, Spain.
Opening of the Town Hall of Innsbruck and winner of the competition for the Urban planning of Donau-City center in Vienna.
- 2003** Winner of the international competition for the New Building of the State Academic Mariinsky Theatre, St. Petersburg, Russia.
- 2004** Winner of the international competition for the New Ewha Womans University Campus Centre, Seoul, Korea.
- 2006** Opening of DPA Spain.
- 2007** Moves to new offices, 6 rue Bouvier, 75011 Paris.
- 2008** Winner of the international competition for the San Pellegrino thermal baths, San Pellegrino, Italia.
Winner of the international competition Yokohama building office, Yokohama, Japan.
Inauguration of the Ewha Womans University, Seoul, South Korea
Inauguration of the Court of Justice of the European Communities in Luxembourg.



DOMINIQUE PERRAULT

Architect DPLG - Urban planner SFU

Firm Dominique Perrault Architecture

EXHIBITIONS

Dominique Perrault Architecture

Solo Exhibition

ICO Foundation, Madrid, SPAIN

29 January to 17 May 2009

exhibition area 1200 m²

Fundacion ICO Zorilla 3, 28014 Madrid, Spain

Dominique Perrault Architecture

Solo Exhibition

Kunsthau, Hamburg, Germany

21 September 2009

exhibition area 895 m²

Kunsthau Klosterwall 15,

20095 Hamburg, Allemagne

FORTHCOMING PUBLICATIONS

A+U - DPA Today

to be published September 2009

AV - Monografias

to be published 3rd May 2009

Dominique Perrault - Monography

to be Hachette Italy - published Summer 2009

Dominique Perrault - Monography

Editions Acte Sud - to be published 2009



**DOMINIQUE PERRAULT
ARCHITECT**

**29 JANUARY – 17 MAYO 2009
MUSEO COLECCIONES ICO**

FOR FURTHER INFORMATION:

Cano Estudio. Pilar Comino / Alfonso Arbolí

M. 646 006 330. T. 91 429 77 74

Email: comunicacion@canoestudio.com

The ICO Collections Museum (Museo Colecciones ICO) is to host the exhibition entitled “Dominique Perrault, Architect” from January 29th to May 17th 2009, coinciding with the opening of the Olympic Tennis Centre in Madrid, designed by Perrault.

The exhibition - conceived and put together by Dominique Perrault Architecture and the Pompidou Centre – was presented in Paris from June 10th to September 29th 2008.

THE ARCHITECT

Dominique Perrault's name immediately calls to mind the National Library of France in Paris – a creation that marked a watershed in French architecture and placed him in the top league of world architecture – the European Court of Justice in Luxemburg, the Velodrome and Olympic Swimming Pool in Berlin, the Theatre Mariinsky II in St. Petersburg... and in Spain, the Magic Box (Olympic Tennis Stadium in Madrid) – to be unveiled coinciding with this exhibition – the Hotel ME by Meliá in Barcelona, the Montigalá Sports Complex in Badalona, the Convention Centre and Exhibition Hall in León, amongst others.

Throughout his career he has been involved in roughly two-hundred projects – reviewed or conducted across the world, where he has left his unmistakable mark – with creations that are not merely buildings but an ongoing quest, where each architectural component is assessed, reinvented and enhanced. So for Dominique Perrault walls, for instance, are still walls in terms of their traditional architectural function but why not try to see through them?

Dominique Perrault's architectural space emerges from the well-calculated arrangement of components, from the search of materials, giving rise to a minimalist view of the emotional power conveyed by the nuances of matter and light.



Simple shapes and fundamental concepts transform the areas where they are applied, through minimal intervention and no reluctance to use empty spaces to create resonance. Thus, emptiness becomes yet another material in urban design, in architecture. And as a result, architectural objects are merely components that confer density, quality and presence to emptiness.

Perrault wants walls, but walls that do not exclude the interior from the exterior and vice versa; walls that protect but do not separate us, enabling open relations and also intimate ones.

For Perrault, any architectural intervention has an immediate effect on the surroundings. That is why it is necessary to assess the area where it is to occur, considering all its qualities. No places are worse than others; it is simply a question of making the most of its virtues, establishing intertwined relations so that together the various features become something far better than what they were separately.

Quoting from Perrault himself, "we do not create buildings, but rather what I refer to as landscapes. We are beyond the built architectural component. We are in a system of relations. Architecture is no longer rigid, closed; it seeks solidarity, presence, exchange and above all, a certain type of happiness".

THE EXHIBITION

Co-curated by Frédéric Migayrou and Gaëlle Lauriot-Prévost, the exhibition includes 25 projects to be displayed in various formats – models, photographs, original drawings, films by Richard Copans (Films d'Ici), videos... - with the aim of providing a glimpse into the history of past works and those currently in progress.

Curtains made of industrial metal meshes – designed and used for the first time in architecture by Dominique Perrault and which have now become almost his trademark – will be used as a scenic device to animate the space.

Architecture is one of the arts disciplines most highly valued at the Museo Colecciones ICO. So the Museum endeavours to bring it closer to the public by staging exhibitions that showcase the various trends and main players while revealing the immense landscape of this form of art, how vital it is to our surroundings and time context, and the clear synergic interrelations that exist between architecture and other artistic expressions. The exhibition "Dominique Perrault, Architect" is a good example of the above.

Along with the exhibition, the Museo Colecciones ICO is organising a conference to be delivered by the architect himself on March 5th 2009 at 19:30 at the Instituto Francés de Madrid (Marqués de la Ensenada, 10).



THE ICO FOUNDATION

The ICO Foundation is a nation-wide public state foundation devoted to developing and fostering a broad range of studies, research projects and other initiatives related to economics, science, technology, the environment, urban development, social issues, employment, culture, art, education, civic, humanitarian and public interest matters.

In the field of art, the ICO Foundation is responsible for management of the Museo Colecciones ICO which is open to the public in Madrid since March 1996. Since its creation, the Museum has on display the body of art works of the Instituto de Credito Oficial focussing on contemporary Spanish artists with collections of sculpture, painting and engravings.

The activities of the Museo Colecciones ICO are complemented by other time-limited contemporary art exhibitions, placing special emphasis on sculpture, photography, design and architecture.

MUSEO COLECCIONES ICO (Calle Zorrilla, 3. Madrid.T. 91 420 12 42)

January 29th to May 17th 2009.

Tuesdays to Saturdays from 11 am to 8 pm. Sundays and public holidays from 10 am to 2 pm.

Closed Mondays.

www.ico.es