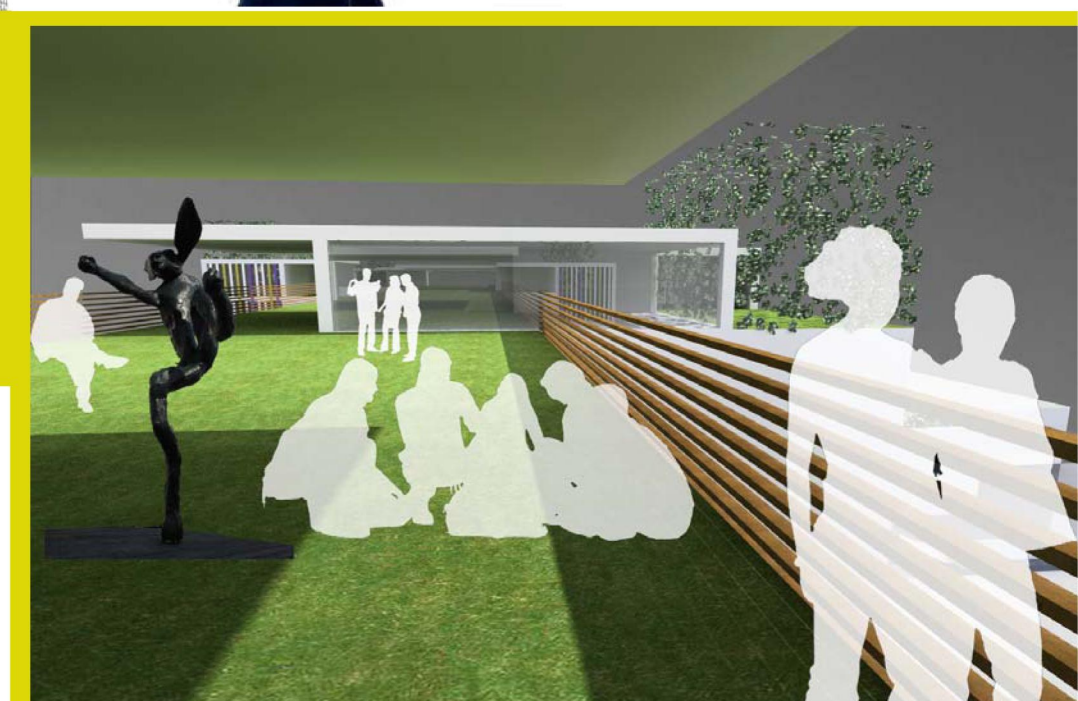
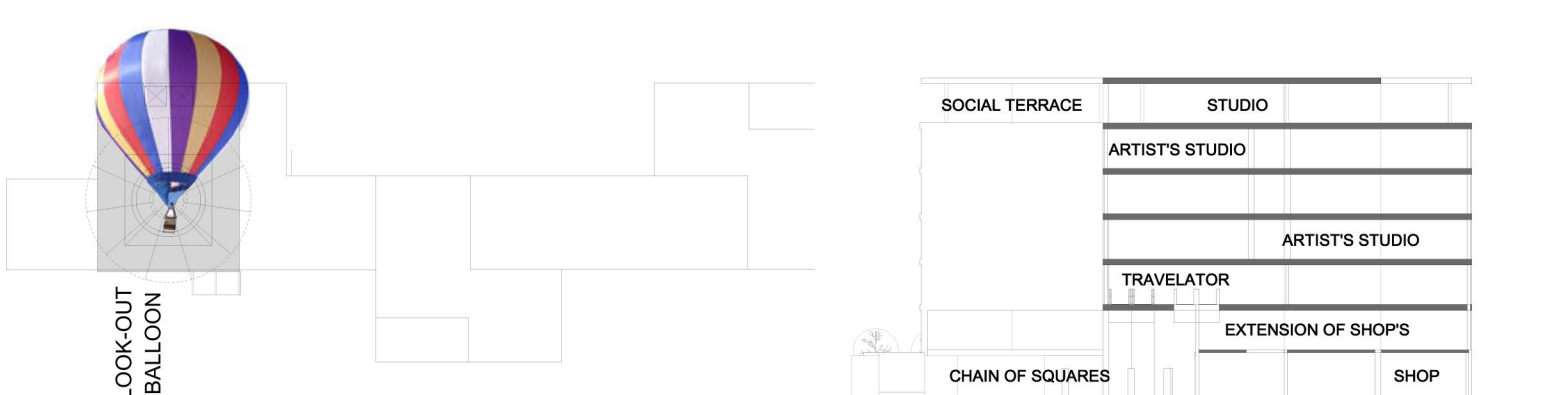
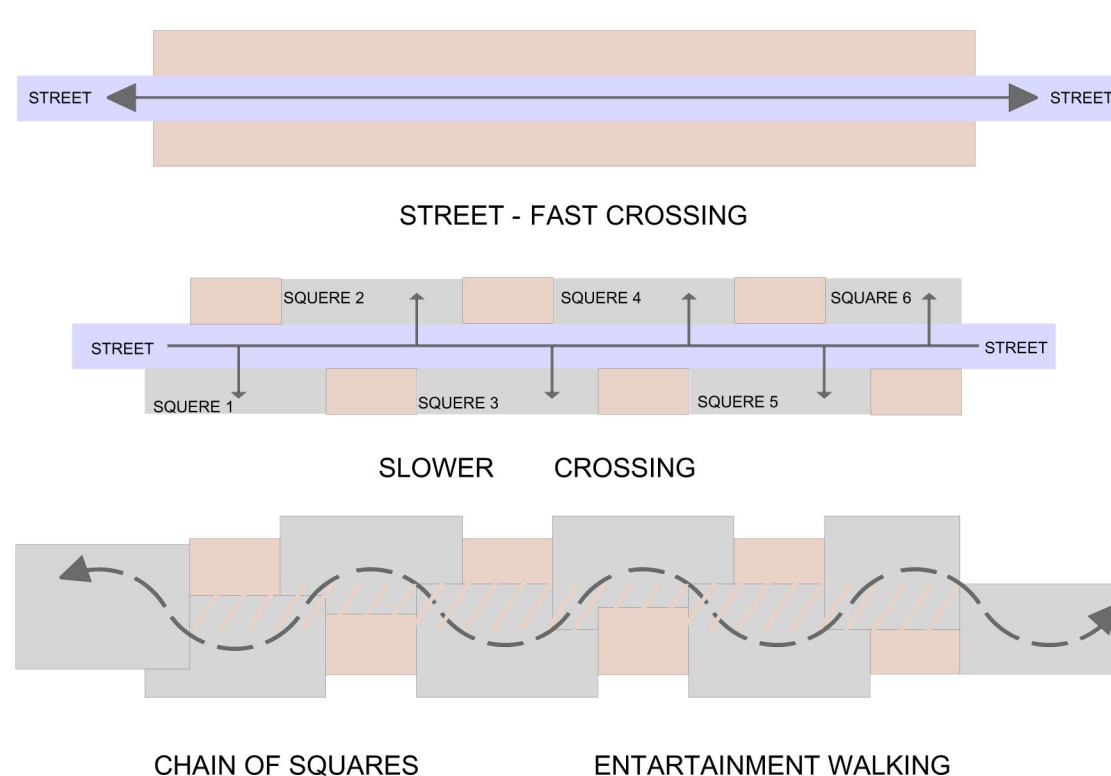
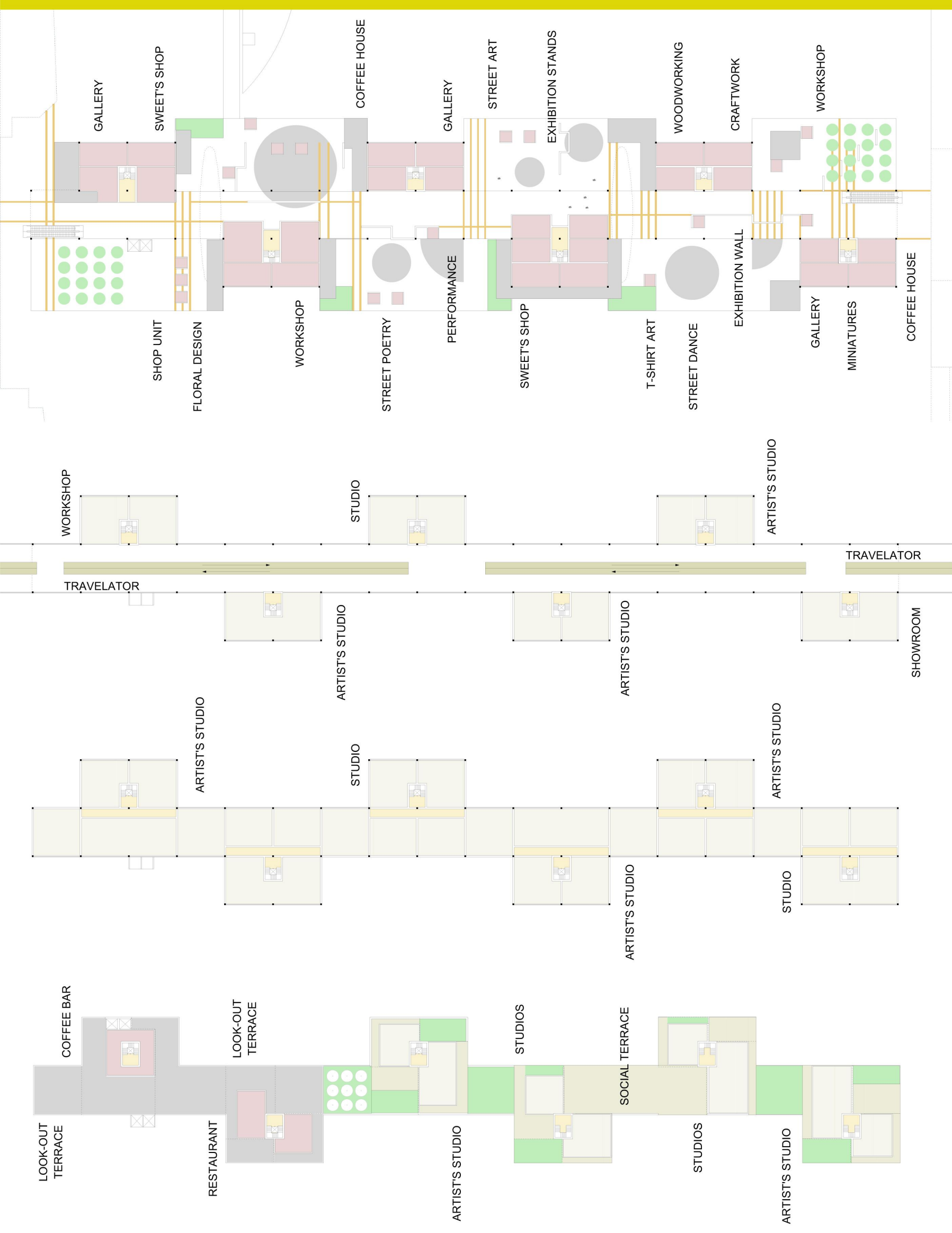


londonARTbridge



londonARTbridge is the place of artist's and art lovers, where they live and love, create and show, perform and express. The bridge is their life, the extraordinary place of communication with the audience and fans, which means a unique undisturbed interactive WORKSHOP and SHOWROOM.

If you walk along the bridge, you will find intimate piazzas on both sides, an endless serial of exhibitions and performances. You will get the opportunity to meet the artists, learn popping, watch woodworking, oversee primadonna's rehearsal or be involved in a video installation. The crossing traffic can pass fast through on the 1st upper floor. Artist's studio apartments take place on the upper floors with view upon the city and the river. They can meet with the public at the piazzas or with each other on the roof terrace at any time.