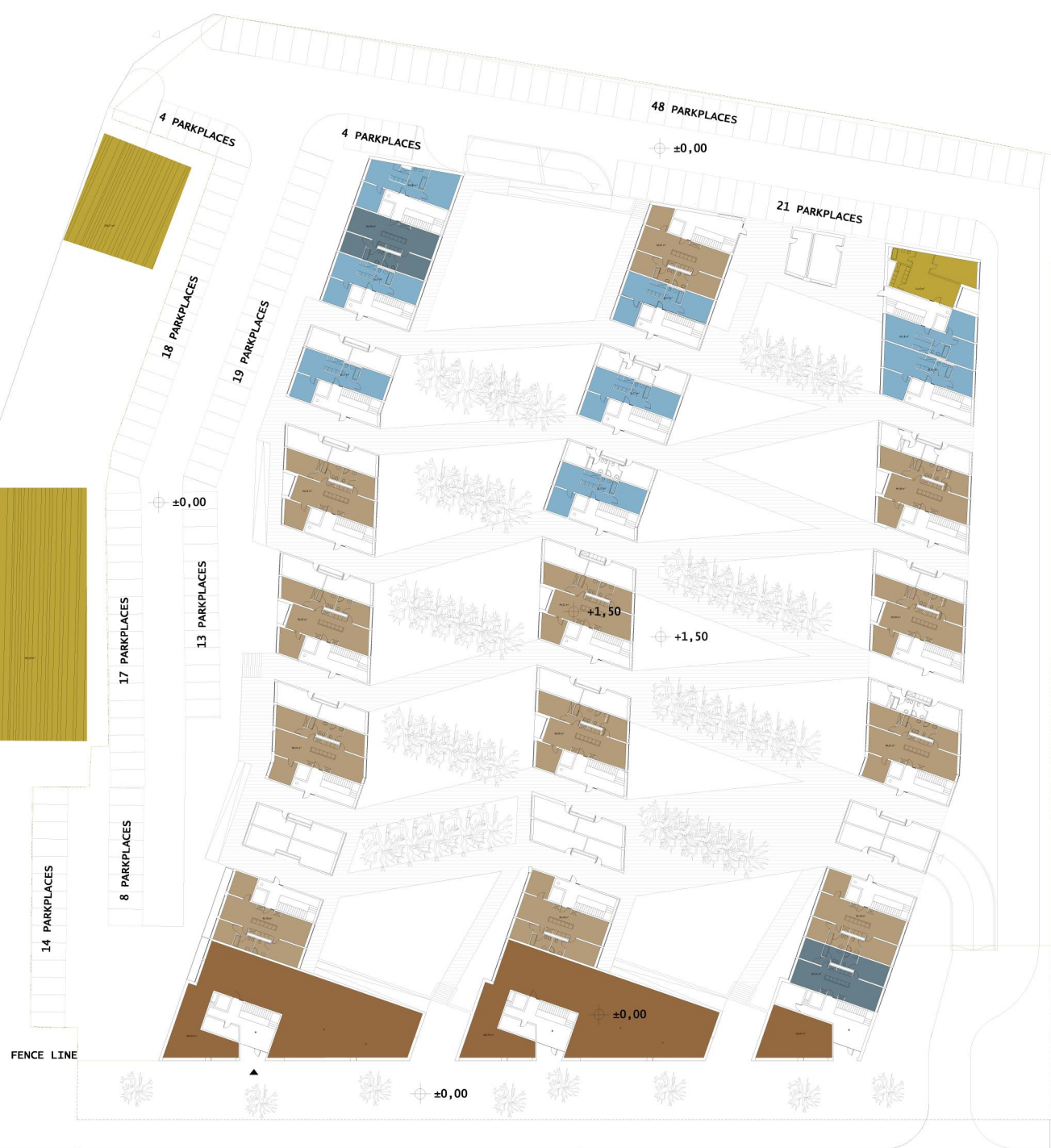
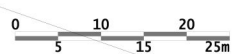
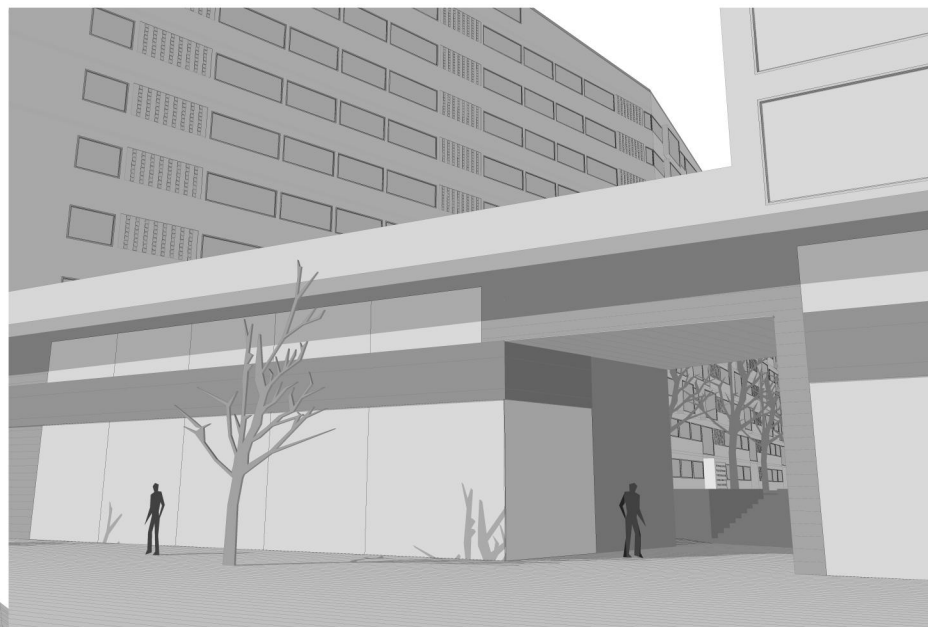
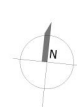


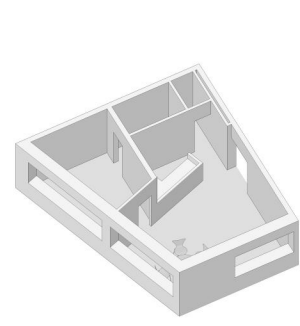
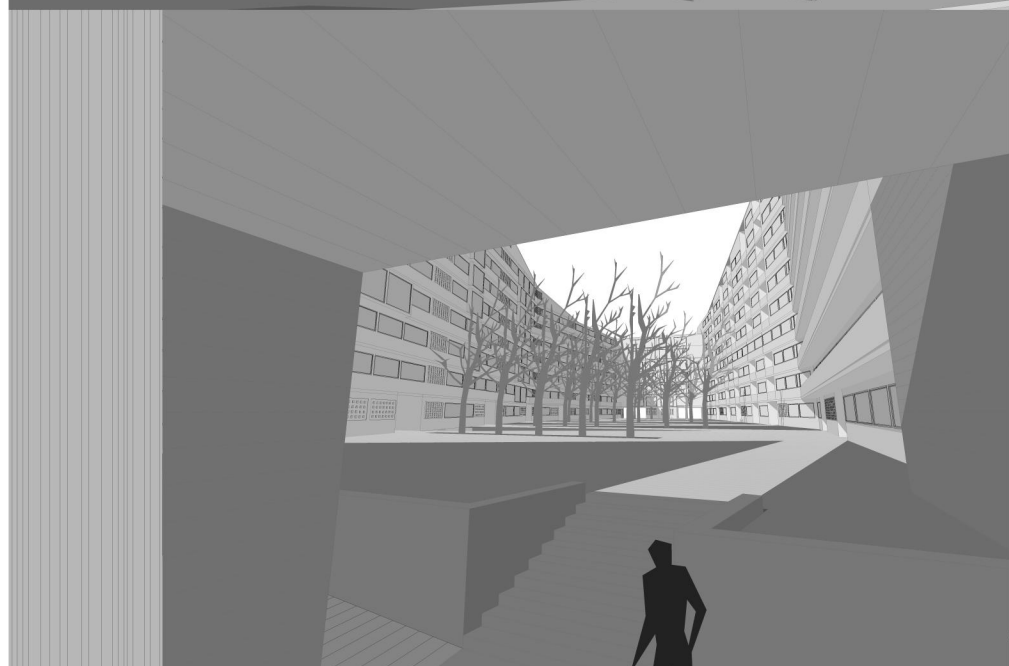
TYPE A: cca.40sqm	0	apartments
TYPE B: cca.55sqm	8	apartments
TYPE C: cca.65sqm	0	apartments
TYPE D: cca.70sqm	3	apartments
TYPE E: cca.83sqm	19	apartments
TYPE F: cca.95sqm	12	apartments
TOTAL/FLAT	42	apartments
	cca. 336	sqm
SHOPS/OFFICES	cca. 840	sqm



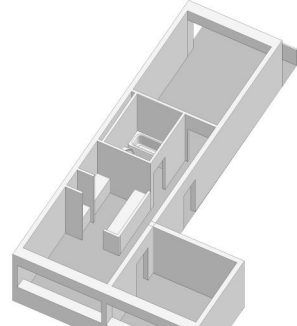
TYPE A: cca.40sqm	0	apartments
TYPE B: cca.55sqm	8	apartments
TYPE C: cca.65sqm	0	apartments
TYPE D: cca.70sqm	1	apartment
TYPE E: cca.83sqm	21	apartments
TYPE F: cca.95sqm	12	apartments
TOTAL/FLAT	42	apartments
	cca. 1730	sqm
SHOPS	cca. 750	sqm
PARKPLACES	177	parkplaces



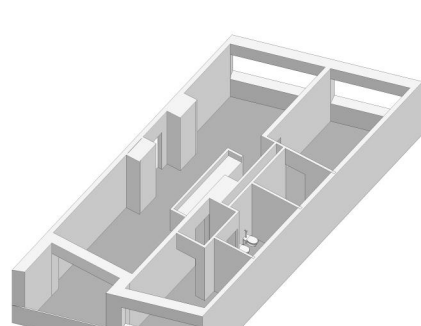
RESIDENTIAL BUILDING, IASI BV. POITZERS  
PRELIMINARY DESIGN 05. 11. 2008.  
ARCHITECTS: PÉTER KRAMER, MIKLÓS PÉTERFFY, ÁDÁM NAGY  
VIEWS



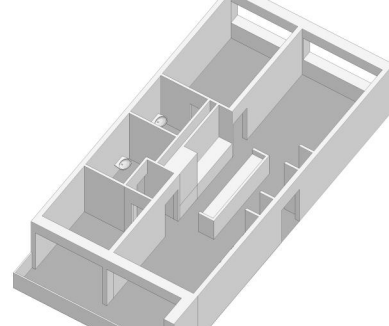
TYPE A: cca.40qm  
27 apartments



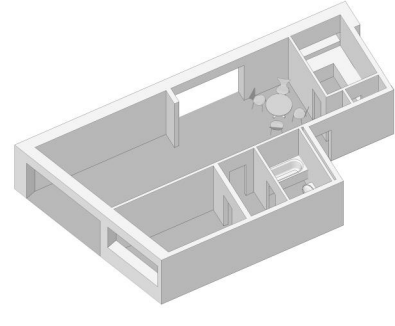
TYPE B: cca.55qm  
67 apartments



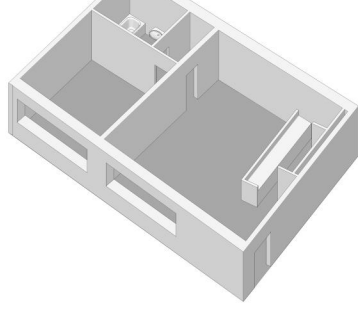
TYPE E: cca.83qm  
200 apartments



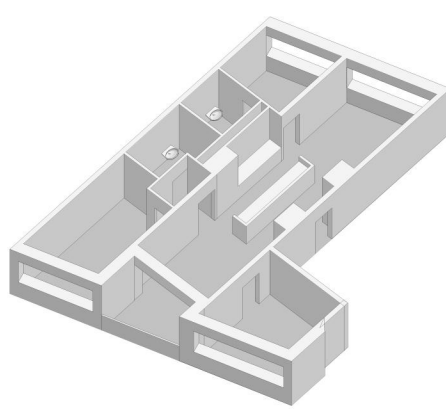
TYPE F: cca.95qm  
113 apartments



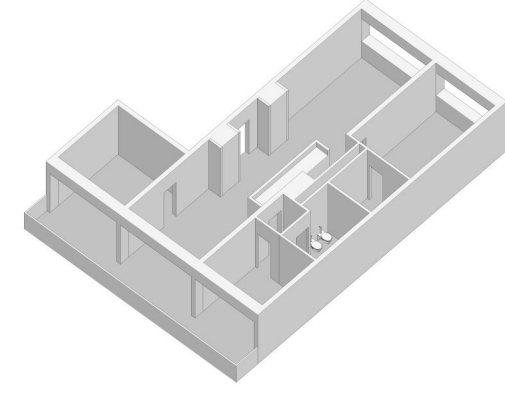
TYPE C: cca.65qm  
27 apartments



TYPE D: cca.70qm  
18 apartments



TYPE E: cca.83qm  
200 apartments



TYPE F: cca.95qm  
113 apartments

RESIDENTIAL BUILDING, IASI BV. POITZERS  
PRELIMINARY DESIGN 05. 11. 2008.  
ARCHITECTS: PÉTER KRAMER, MIKLÓS PÉTERFFY, ÁDÁM NAGY  
FLAT TYPES



# "közös\_tört"

NAGY ÁDÁM  
LAKÓÉPÜLET  
IASI

20 év tervezésoktatás a BME Építésztörténeti és Műemléki Tanszéken