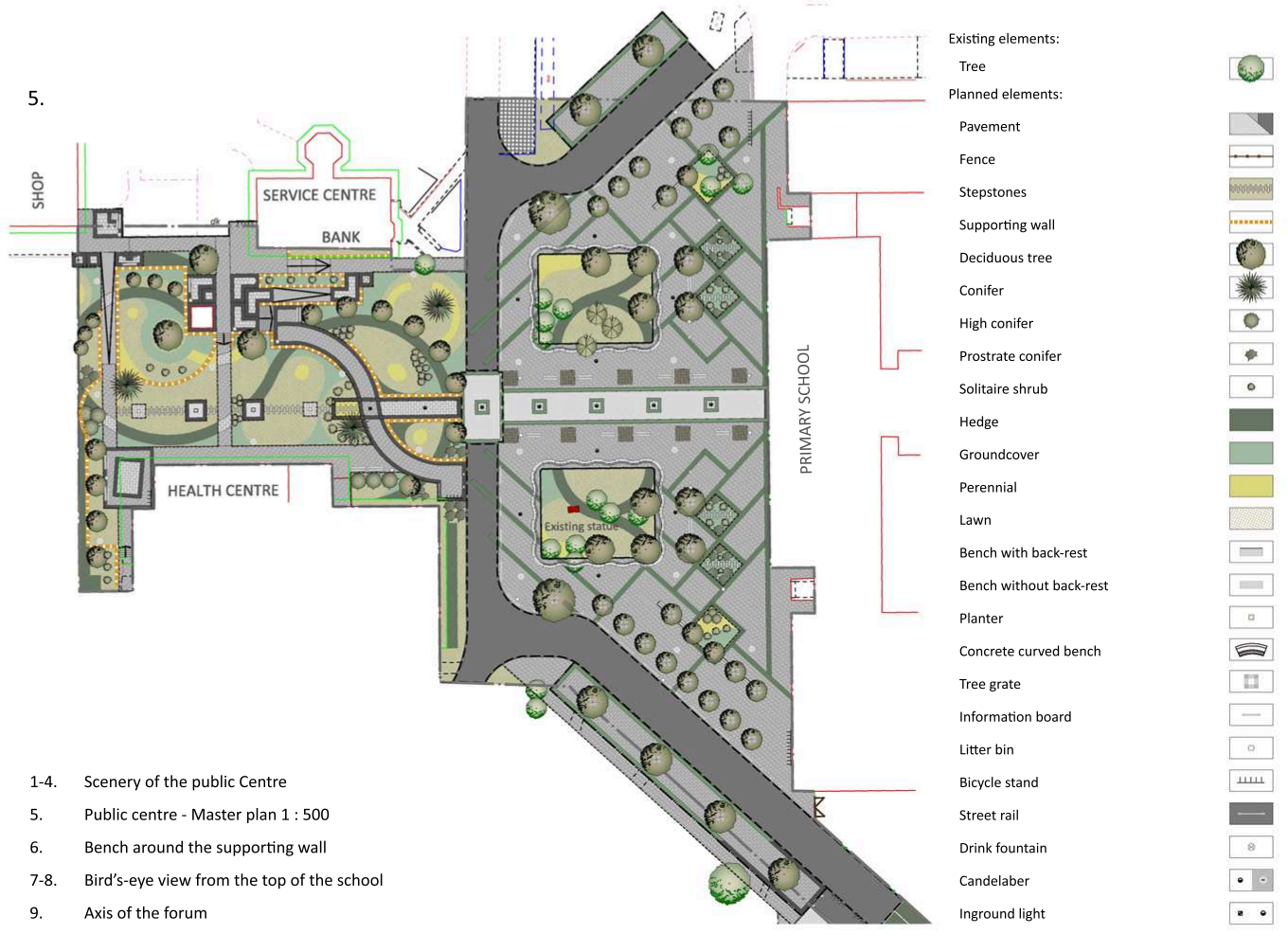


NYÍREGYHÁZA - ÖRÖKÖSFÖLD

Public Space Revitalization in a Suburban Centre



2. Execution ■ I. ■ Public centre



- 1-4. Scenery of the public Centre
- 5. Public centre - Master plan 1 : 500
- 6. Bench around the supporting wall
- 7-8. Bird's-eye view from the top of the school
- 9. Axis of the forum
- 10. Green
- 11. Alley with trees on the paved surface
- 12. Pedestrians
- 13. Informations board
- 14. In front of the stairs
- 15. Bird's-eye view from the top of the school

The public square reconstruction actualized in front of the town's school can be divided into two parts. It's first part is a forum, which is intensively paved, the event and assembly place of the community. Its second part is already dominated by green surface, that is after leaving the public square, a green area divided into parts with promenades leads to the entrance of the service provision buildings.

The assembly square is symmetric, its axis reach beyond the paved surface into the green area surface. The two highlighted plant cassettes with aged evergreens on the two sides of the axis were the arrangement elements of the previous public square, so we retained them. We tried to divide the intensively paved surfaces into parts besides rasters with encased trees of short, regular tree foliage. The patterns appearing on the paving raster here and there are board games which can even be played in the open air with a simple set of figures, a few different pebbles or even with an eraser from the schoolbag. The rules of the game are displayed for public view on the information boards placed in the area.

In the green surface dominated reconstruction part of the square, the axis continue through dot-like objects placed in the lawn. The lawn surfaces are divided into parts with intensively planted shrubs, soil covering and annual spots along vigorous arches.

Originally we planned to place a bench system with back of monolith, artificial stone around the highlighted plant cassettes of the forum, but this failed due to public resistance from the inhabitants, so as an alternative a mixed structure waveline bench system was put into place. This was the element which defined further the style of the applied modern and simple park furnishings.

We have planted lines of trees in the direction of the connecting green surfaces from the area along the mixed traffic roads.

