

**REVERSED GLAZED ROOF**  
allows for evenly distributed light penetration,  
collection of rain water for irrigation, easy access for  
maintenance

**INTEGRATED SOLAR VACUUM TUBES**  
supply all needed domestic hot water

**BRANCHED CONCRETE STRUCTURE**  
provides large cantelivers and column-free  
interiors

**SPECIALTY GLAZING**  
green volume-tinted insulated glass filters  
light from heat and allows necessary UV for  
interior vegetation

**RAINWATER TANK**  
roof rainwater is collected here for  
gray use in toilets and interior  
irrigation

**LIVING SPACES**  
sheltered under interior garden benefit extra  
insulation

**INTERIOR SOIL**  
terrain is reintroduced back to interior  
garden after construction and visually  
links all levels to exterior

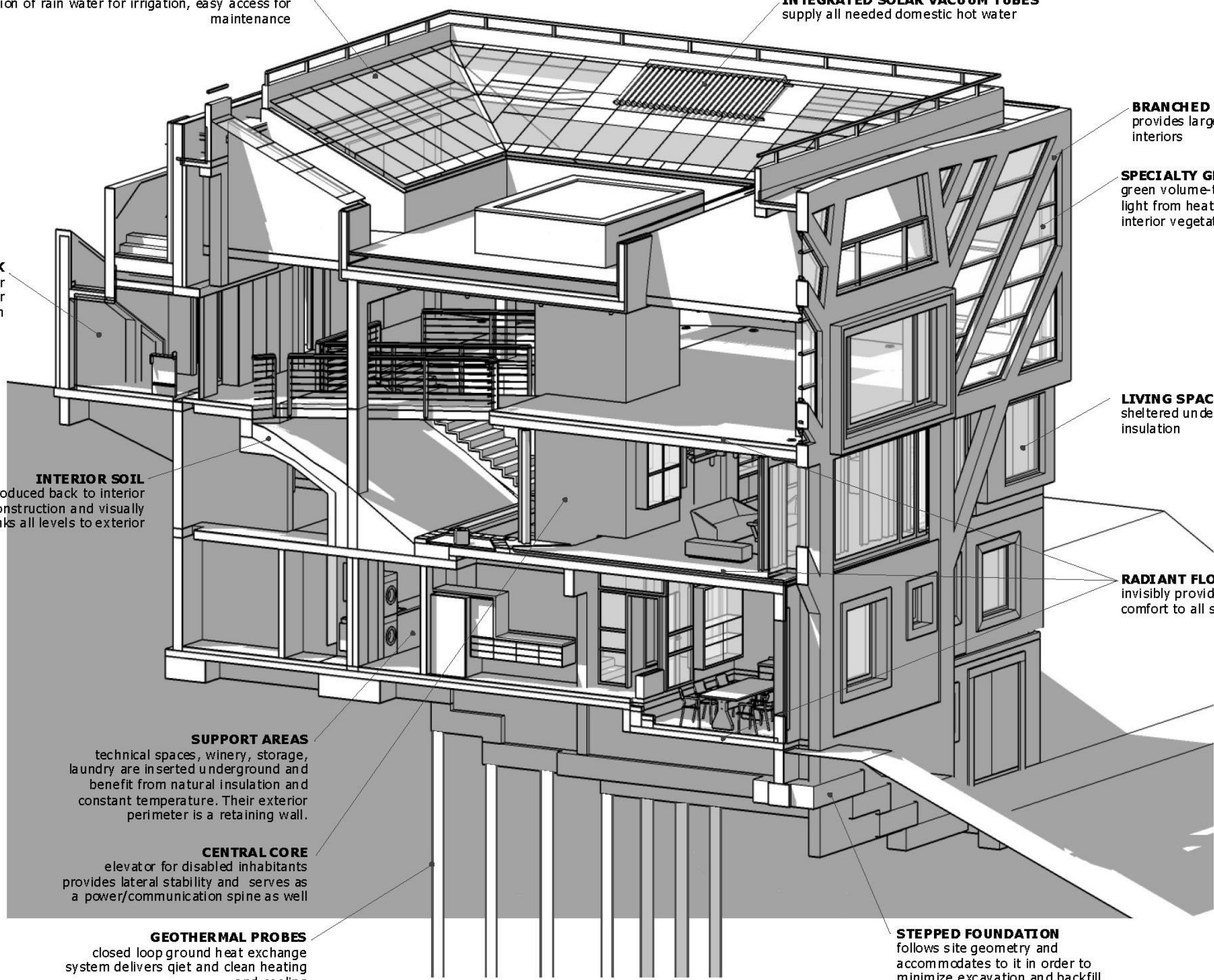
**RADIANT FLOOR HEATING/COOLING**  
invisibly provides even temperature and  
comfort to all spaces

**SUPPORT AREAS**  
technical spaces, winery, storage,  
laundry are inserted underground and  
benefit from natural insulation and  
constant temperature. Their exterior  
perimeter is a retaining wall.

**CENTRAL CORE**  
elevator for disabled inhabitants  
provides lateral stability and serves as  
a power/communication spine as well

**GEOTHERMAL PROBES**  
closed loop ground heat exchange  
system delivers quiet and clean heating  
and cooling

**STEPPED FOUNDATION**  
follows site geometry and  
accommodates to it in order to  
minimize excavation and backfill



**AXONOMETRIC SECTION**