

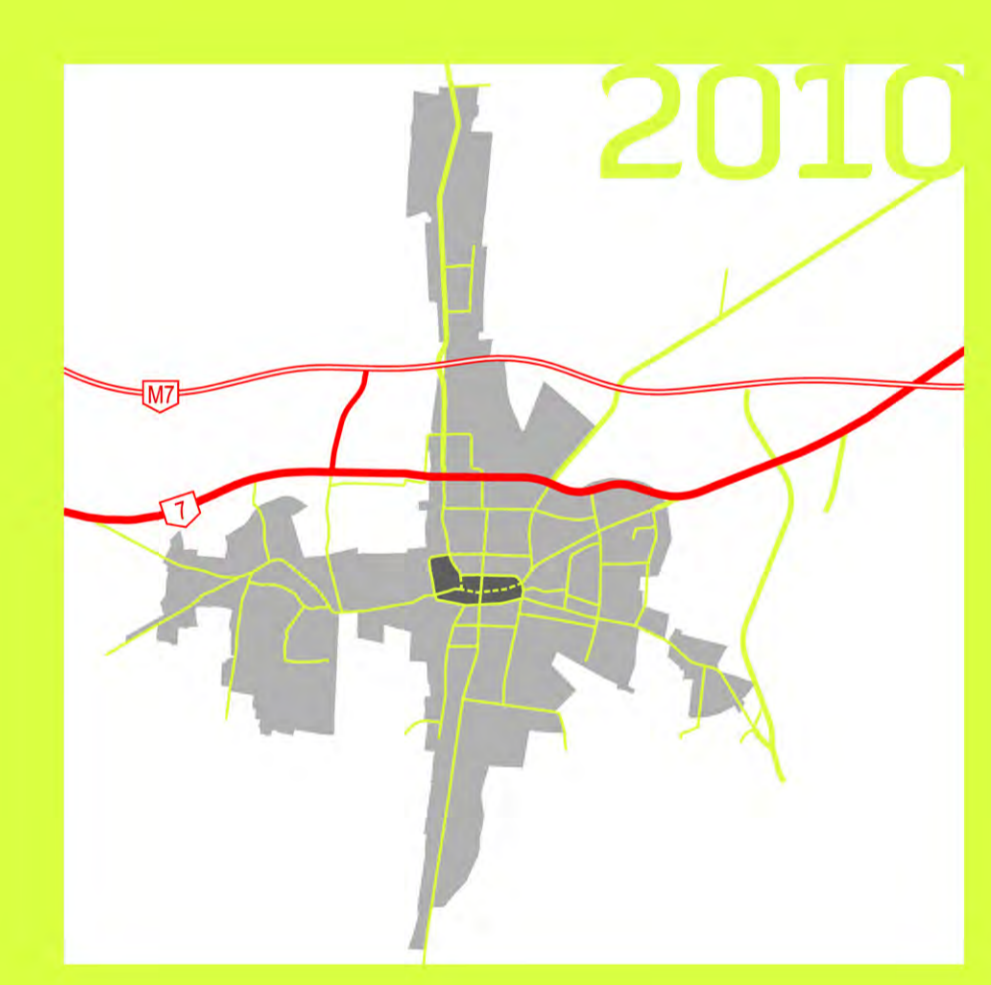
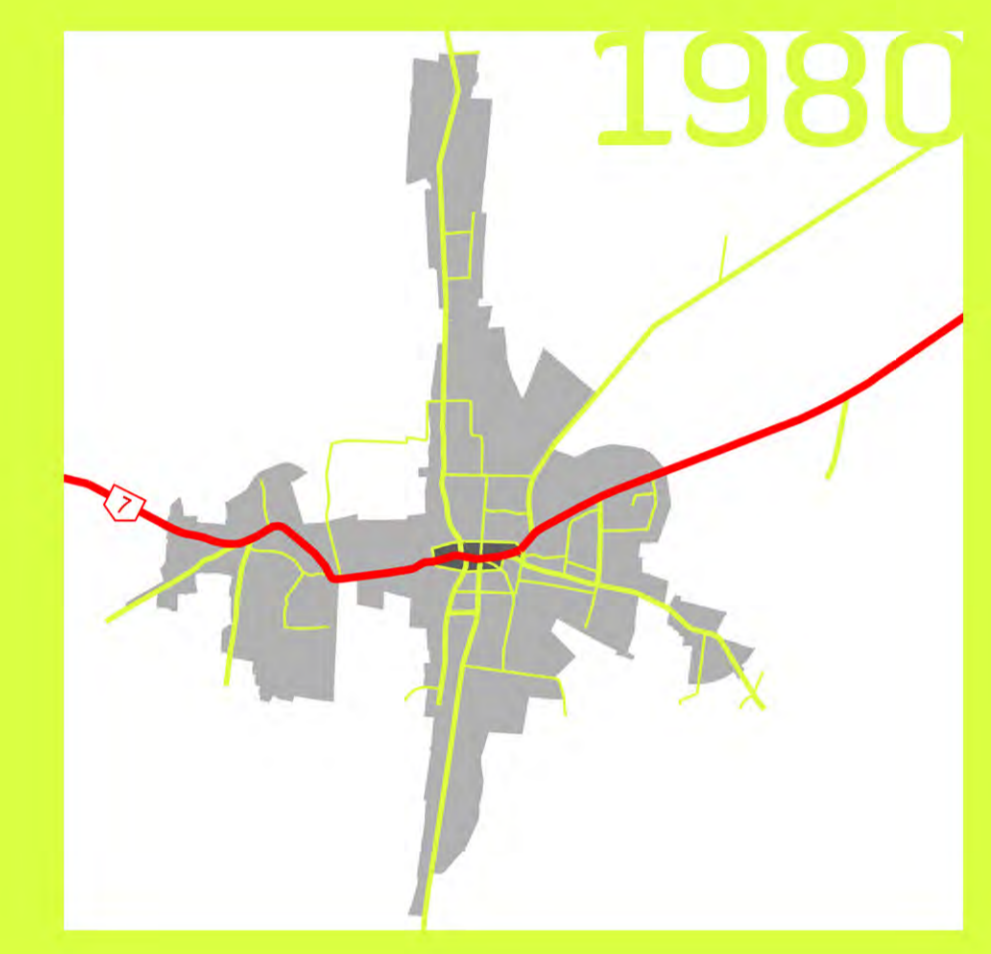


# TRAFFIC ENGINEERING

# LANDSCAPE PLANNING

# NAGYKANIZSA CITY VIEW

## MAIN IMPROVEMENTS



Main improvements of traffic courses have been made in the last 30 years. One of the most important changes was building the bypass of main road nr.7 in the eighties. In 2009 the M7 motorway was completed, since then international traffic passes Nagykanizsa by.

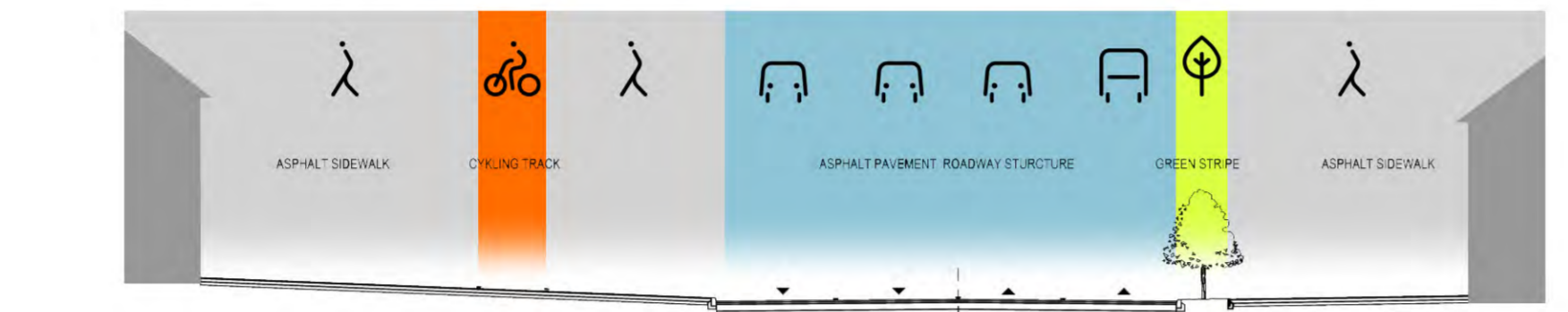
## LINKING URBAN SPACES

**2.1** Public Space Development and Traffic Calming Plan for the Centre of Nagykanizsa  
8. EUROPEAN URBAN AND REGIONAL PLANNING AWARDS

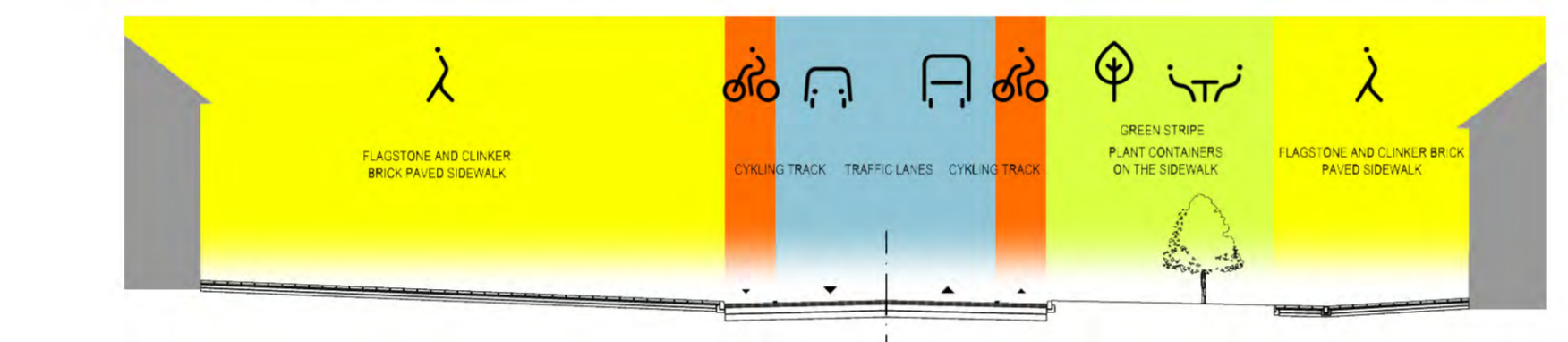
### CITY CENTER'S ZONES



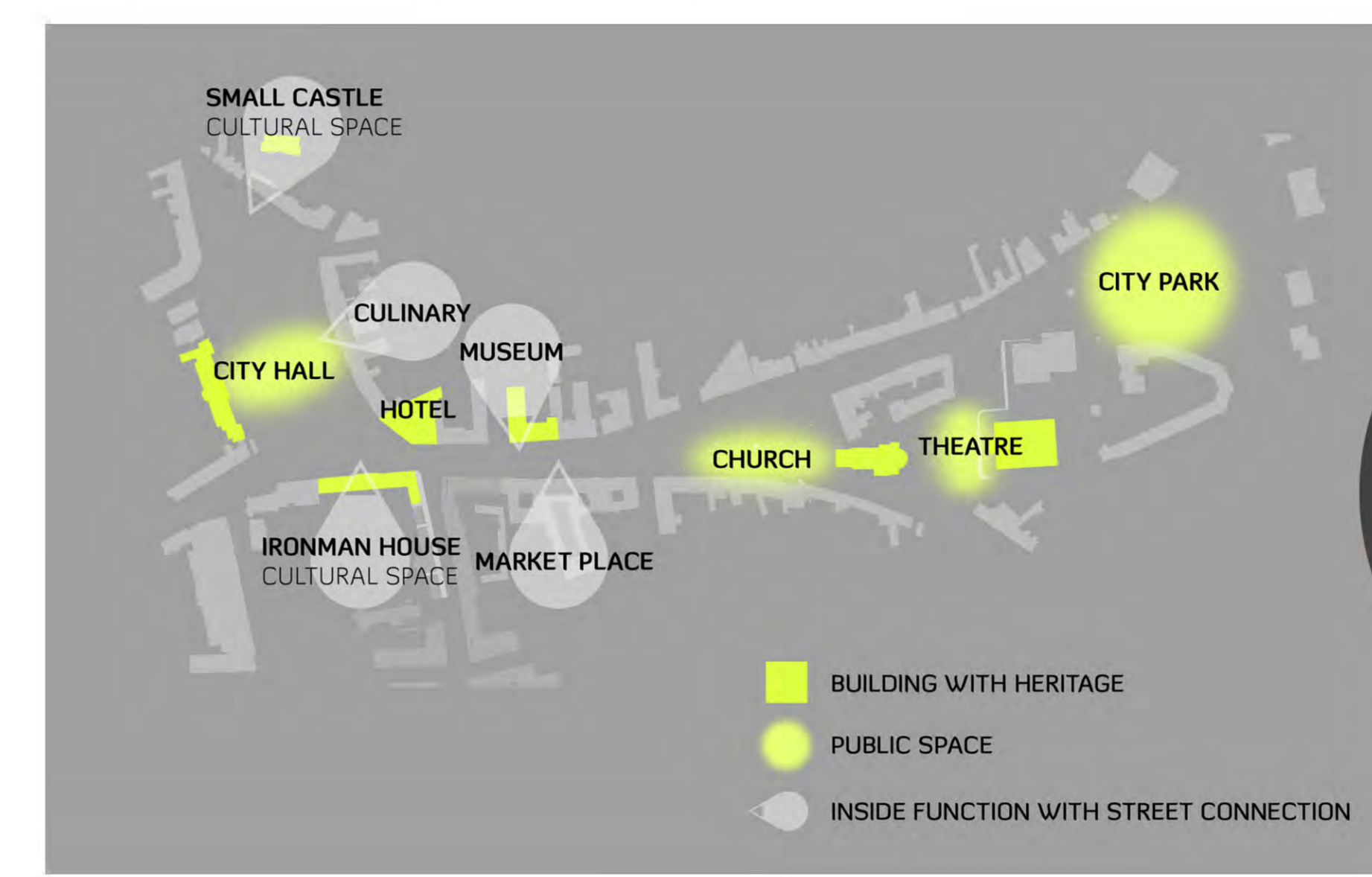
### MAIN ROAD CROSS SECTION M 1:200



### MAIN ROAD CROSS SECTION / PLANNED M 1:200



### LOCAL CONNECTIONS



2



3



### 1 ERZSÉBET SQUARE



### 2 DEÁK SQUARE



### 3 EÖTVÖS SQUARE



CITY OF NAGYKANIZSA  
WWW.NAGYKANIZSA.HU



## LINKING URBAN SPACES

**2.2** Public Space Development and Traffic Calming Plan for the Centre of Nagykanizsa  
8. EUROPEAN URBAN AND REGIONAL PLANNING AWARDS



Client: The Local Government of Nagykanizsa  
Landscape design: Land-A Ltd.  
Traffic engineering: Pro Urbe Ltd.



1980

Main improvements of traffic courses have been made in the last 30 years. One of the most important changes was building the bypass of main road nr. 7 in the eighties. In 2009 the M7 motorway was completed, since then international traffic passes Nagykanizsa by.



2010



CITY HALL



VASEMBER HOUSE



ARANY SZARVAS HOTEL AND RESTAURANT, RESIDENTIAL BUILDINGS, SZERB HOUSE



CENTRAL HOTEL



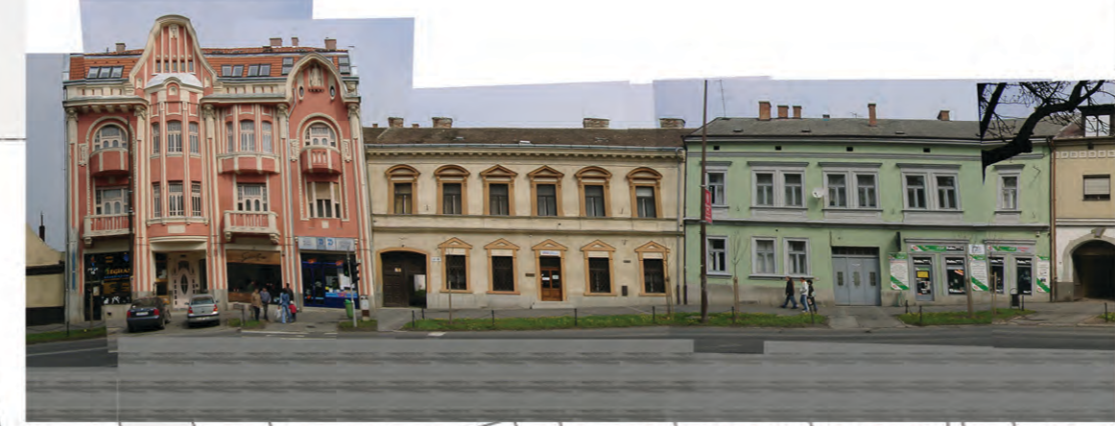
SAVINGS BANK AND BAZAAR, ROSENFELD HOUSE



MUSEUM



WEISER HOUSE



ROGGENRIEDER HOUSE, RESIDENTIAL BUILDINGS



AXENTI HOUSE, GRÜNHUT HOUSES, SAVINGS BANK



RESIDENTIAL BUILDINGS



RESIDENTIAL BUILDINGS, HUNGARIA INSURANCE COMPANY (MIDDLE)

„ERZSÉBET” SQUARE

„FŐ” STREET

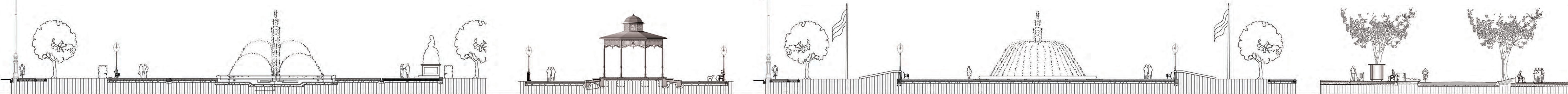
„FŐ” STREET

„DEÁK” SQUARE

„EÖTVÖS” SQUARE

TYPICAL SECTIONS AT ERZSÉBET SQUARE

TYPICAL SECTION AT FŐ STREET



ERZSÉBET SQUARE VIEW TOWARDS THE HOLY TRINITY SCULPTURE MOVED HERE FROM ANOTHER PART OF THE TOWN



ERZSÉBET SQUARE WITH MUSIC PAVILION



ERZSÉBET SQUARE VIEW FROM THE "IRONMAN HOUSE"



ERZSÉBET SQUARE VIEW FROM THE CENTRE TOWARDS "IRONMAN HOUSE"



DEÁK SQUARE VIEW FROM THE TURUL MONUMENT



DEÁK SQUARE PARK IN FRONT OF THE CHURCH WITH THE RELOCATED "TURKISH FOUNTAIN"



EÖTVÖS PARK THE NEW ENVIRONMENT OF THE IRREDENTIST SCULPTURE



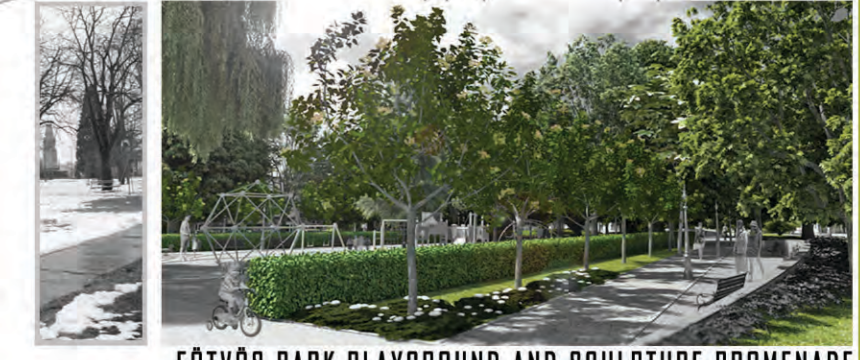
EÖTVÖS PARK PROMENADE WITH FOUNTAINS



SZÉCHENYI FOREGROUND OF THE THEATRE WITH THE HILD AWARD



SZÉCHENYI SQUARE PROGRAM SPACE



EÖTVÖS PARK PLAYGROUND AND SCULPTURE PROMENADE



EÖTVÖS PARK PROMENADE VIEWED FROM KÓRHÁZ STREET

VIEW OF THE FOUNTAIN

SECTION AT THE TERRACES OF THE PROMENADE

SECTION AT THE PROTECTED "SUSZTER" PROMENADE

PROMENADE

LANDSCAPING SOLUTIONS

SIDEWALK

GREEN STRIP

PUBLIC ROAD

TYPICAL SECTIONS AT ADY ENDRE STREET

TYPICAL SECTION AT DEÁK SQUARE

TYPICAL SECTION AT EÖTVÖS PARK

