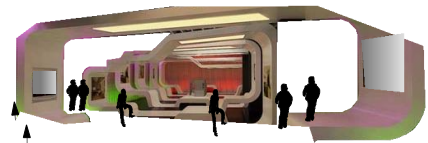
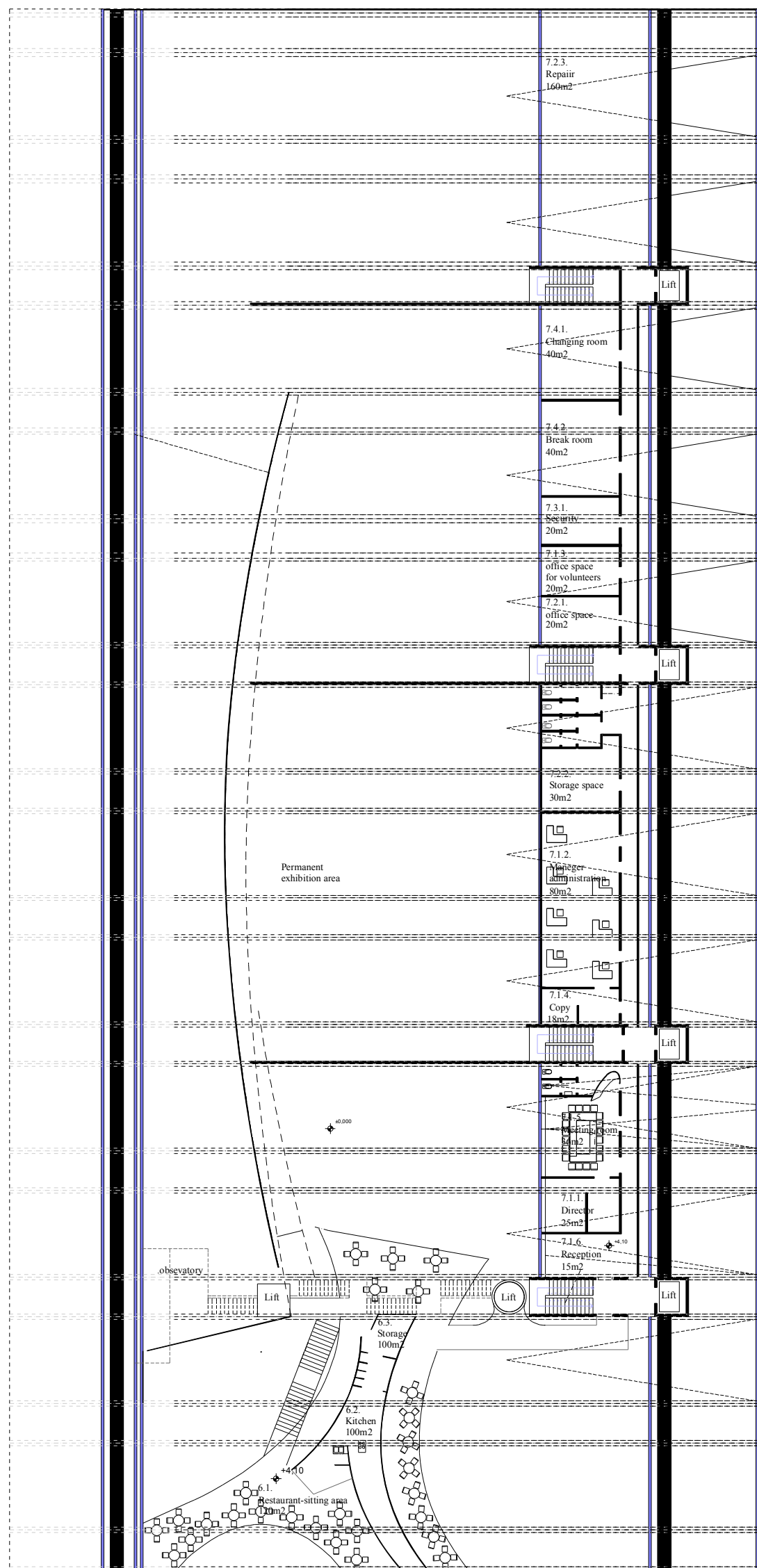
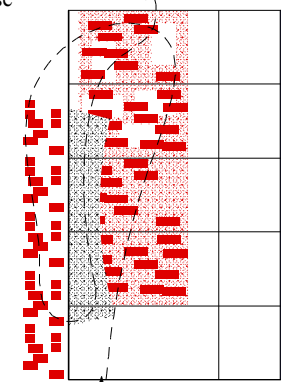


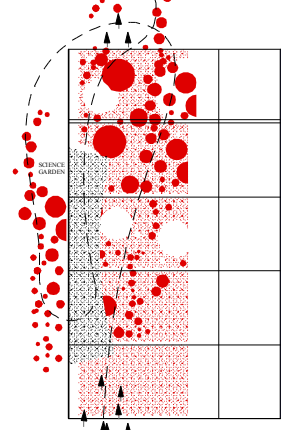
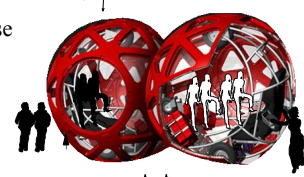
2.2. Temporary exhibition area 500m2



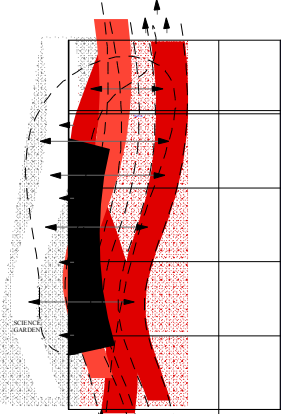
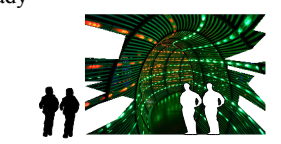
positive- negativ Sparse



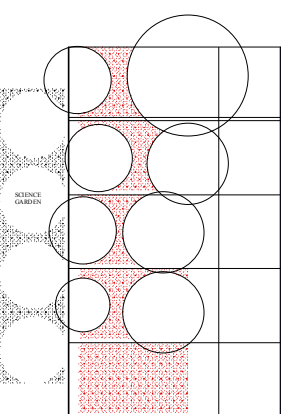
Sparse



Thready



Sparse block



6.1.	Restaurant-sitting area	120m2
6.2.	Kitchen	100m2
6.3.	Storage	20m2
6.1.	Restaurant-sitting area	20m2
7.2.1.	Office space	20m2
7.2.2.	Storage space	27m2
7.2.3.	Repair	160m2
7.3.1.	Security	20m2
7.4.1.	Changing room	40m2
7.4.2.	Break room	40m2
7.1.1.	Director	25m2
7.1.2.	Manager administration	80m2
7.1.3.	Office space for volunteers	20m2
7.1.4.	Copy	18m2
7.1.5.	Meeting room	31m2
7.1.6.	Reception	15m2
2.2.	Temporary exhibition area	500m2

