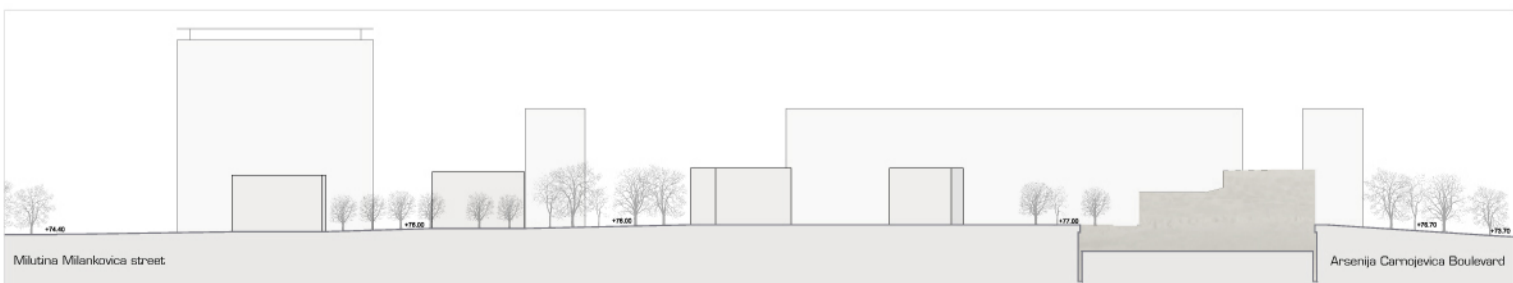


- Faculty of Organisational Science
GF+3F, floor area: 3432m²
- Faculty of Physics
GF+3F, floor area: 2227m²
- Underground parking entrance
Parking zone - 24 cars
- Faculty of Drama Arts
- Faculty of Mathematics
GF+3F, floor area: 2118m²
- Cafe
- Faculty for Electrical Engineering
GF+3F, floor area: 1740m²
- Science Institute (proposed building height: 50,0m)
GF+3F, floor area: 2560m²
- Underground parking entrance
Parking zone - 24 cars
- Materials and Nano Technology Centres, Supercomputing Centre
GF+3F, floor area: 1458m²
- Parking zone for the staff - 20 cars
- Technical entrance - Loading
Visitor's car entrance
- Centre for Promotion of Science
- 1 Lobby Entrance

MASTER PLAN SCALE 1:1000



'1' SECTION SCALE 1:1000



'C' SECTION SCALE 1:1000

