

- Management administration 233.3 m² 7.1
- Director's office and secretary 25.0 m² 7.1.1
- Man., event proj. man., business admin. 71.2 m² 7.1.2
- Office space for volunteers 20.7 m² 7.1.3
- Copy room with storage 16.1 m² 7.1.4
- Meeting room (10 - 20 people) 33.7 m² 7.1.5
- Reception area 50.1 m² 7.1.6
- Restroom and kitchenette 16.5 m² 7.1.7

- Break area 61.8 m² 2.1.4.1
- Restroom 25.2 m² 2.1.4.2

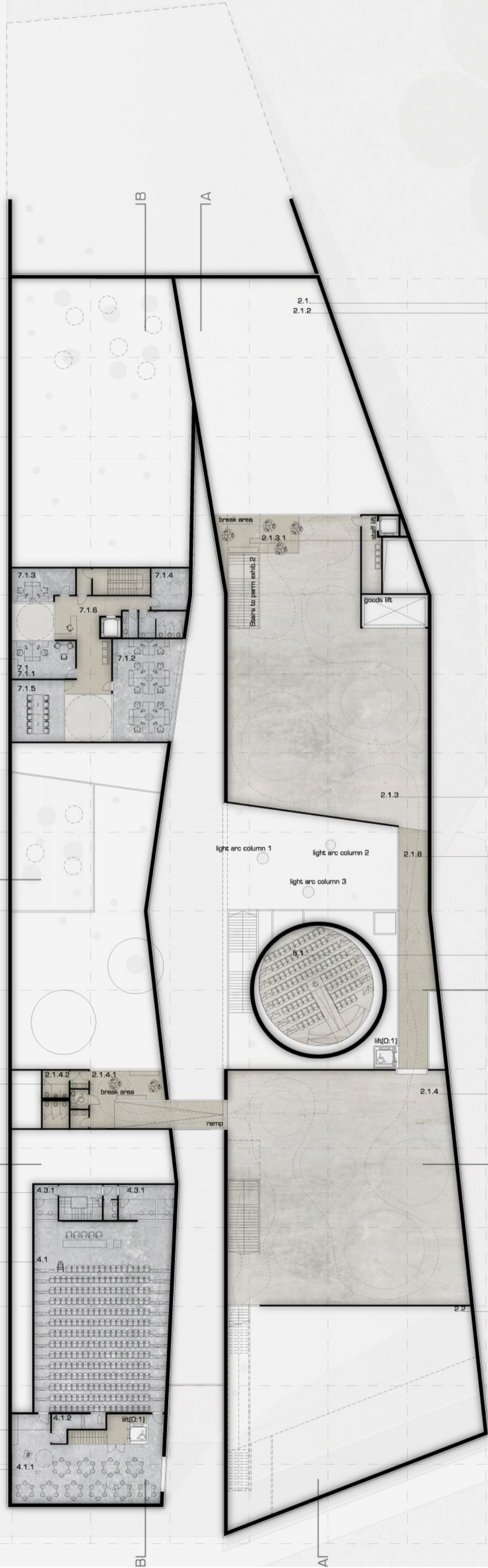
Simultaneous translation rooms (5persons) 33.2 m² 4.3.1

Conference hall (250 seats) 269.2 m² 4.1



Projection room 10.7 m² 4.1.2

Meeting room 111.3 m² 4.1.1



2.1 Permanent exhibition area 2500 m² (in all)
2.1.2 Perm. exhib. hall 2.Planet earth air space



2.1.3.1 Break area 33.3 m²

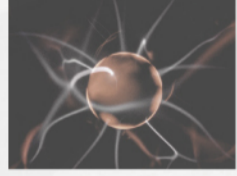
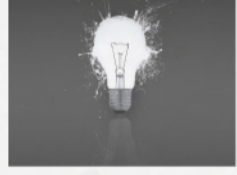


2.1.3 Permanent exhib. hall 3.life on earth 498.6 m²

2.1.8 Passage 77.8 m²

5.0 Planetarium 177.6 m²
5.1 Planetarium dome theatre 147.6 m²

2.1.4 Permanent exhib. hall 4.human organism 540.2 m²



2.2 Temporary exhibition area air space 502.5 m²