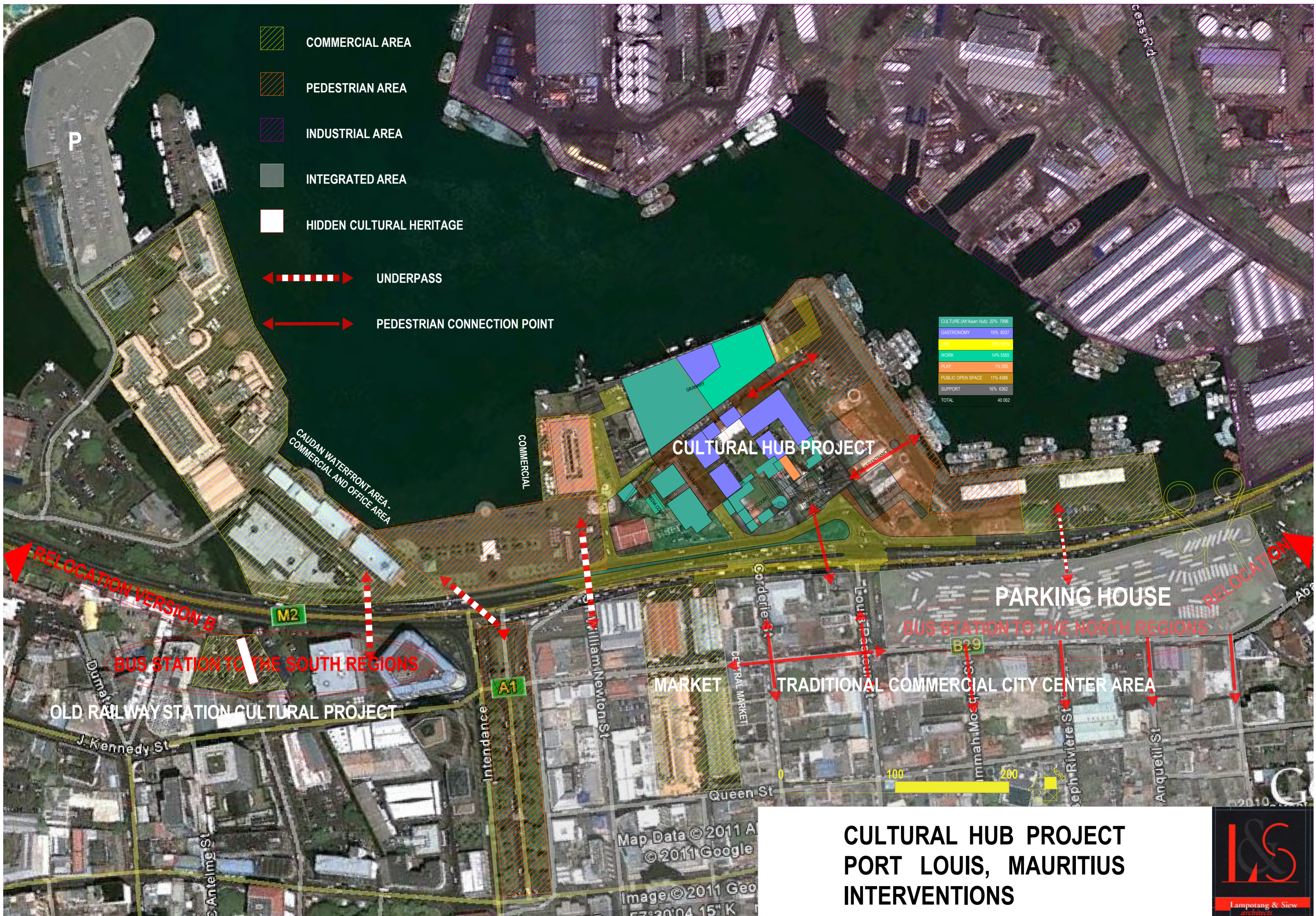


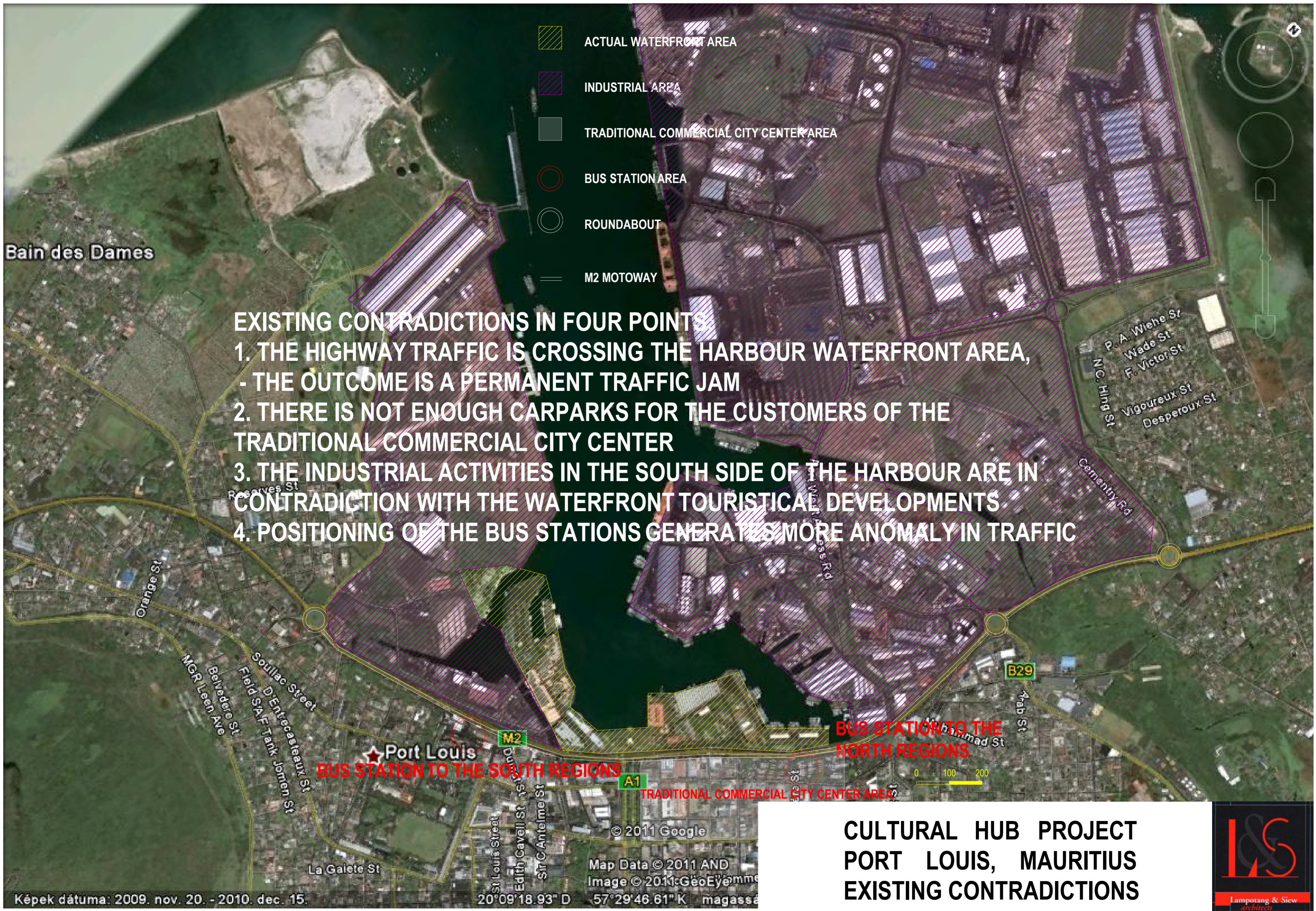
**CULTURAL HUB PROJECT  
PORT LOUIS, MAURITIUS  
EXISTING LAND USE STATE**





**CULTURAL HUB PROJECT  
PORT LOUIS, MAURITIUS  
INTERVENTIONS**





**EXISTING CONTRADICTIONS IN FOUR POINTS**

- 1. THE HIGHWAY TRAFFIC IS CROSSING THE HARBOUR WATERFRONT AREA,  
- THE OUTCOME IS A PERMANENT TRAFFIC JAM
- 2. THERE IS NOT ENOUGH CARPARKS FOR THE CUSTOMERS OF THE TRADITIONAL COMMERCIAL CITY CENTER
- 3. THE INDUSTRIAL ACTIVITIES IN THE SOUTH SIDE OF THE HARBOUR ARE IN CONTRADICTION WITH THE WATERFRONT TOURISTICAL DEVELOPMENTS
- 4. POSITIONING OF THE BUS STATIONS GENERATES MORE ANOMALY IN TRAFFIC

**BUS STATION TO THE SOUTH REGIONS**

**BUS STATION TO THE NORTH REGIONS**

**TRADITIONAL COMMERCIAL CITY CENTER AREA**

**CULTURAL HUB PROJECT  
PORT LOUIS, MAURITIUS  
EXISTING CONTRADICTIONS**





Bain des Dames

ALTERNATIVE BRIDGE FOR THE MOTORWAY M2 BETWEEN NORTH AND SOUTH

ROAD OF PORT LOUIS CITY CENTER

BUS STATION TO THE SOUTH REGIONS A1

NEW BUS STATION TO THE NORTH REGIONS B29

A VERSION

CULTURAL HUB PROJECT  
 PORT LOUIS, MAURITIUS  
 DEVELOPMENT VERSIONS



Képek dátuma: 2009. nov. 20. - 2010. dec. 15.

© 2011 Google  
 Map Data © 2011 AND  
 Image © 2011: GeoEye  
 20°09'18.93" D 57°29'46.61" K magassa



Bain des Dames

**NEW BUS STATION TO THE SOUTH REGIONS**

-  ACTUAL WATERFRONT AREA
-  FURTHER DEVELOPMENT AREA
-  INDUSTRIAL AREA
-  FURTHER DEVELOPMENT INDUSTRIAL AREA
-  RELOCATED BUS STATION AREA
-  NEW ROUNDABOUT
-  M2 MOTOWAY

Reserves St

Orange St

**ALTERNATIVE OVERPASS FOR THE MOTORWAY M2 BETWEEN NORTH AND SOUTH**

**NEW BUS STATION TO THE NORTH REGIONS**

OLD RAILWAY STATION CULTURAL PROJECT

**BUS STATION TO THE SOUTH REGIONS**

Port Louis

Muhammad St

**B VERSION**

Képek dátuma: 2009. nov. 20. - 2010. dec. 15.

© 2011 Google  
 Map Data © 2011 AND  
 Image © 2011: GeoEye  
 20°09'18.93" D 57°29'46.61" K magassa

**CULTURAL HUB PROJECT  
 PORT LOUIS, MAURITIUS  
 DEVELOPMENT VERSIONS**

