

The term 'TRAFO' is a hungarian expression, a shortcut to 'electrical generator'.

The former electrical generator house shown here, had been transformed into a so-called 'TRAFO OFFICE BUILDING', as a part of the Akademia Park, an urban mixed-use development project.

The Trafo Office is an unique mixture of an old structure with a contemporary building method, which has become the headquarters of the developer, as an info box, a showroom and project sales office, representing the image of the whole development.

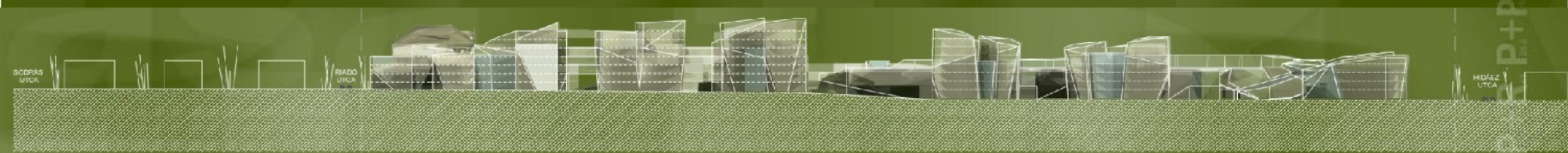
The green values combined with the human comfort is the essence of the project, redefining the Bauhaus philosophy.

A PROJECT OVERVIEW





B1 Location: bicycle roads and bridle-paths



B2 Location

the local public and private interest DENSITY 1,27



BUDA'S „FOOD CHAMBER”



ROYAL HUNTING AREA



TRADITIONAL VACATION HOMES



FRUIT GARDENS



HORSE BREEDING CULTURE



„PARADISE BEUTY”



B2

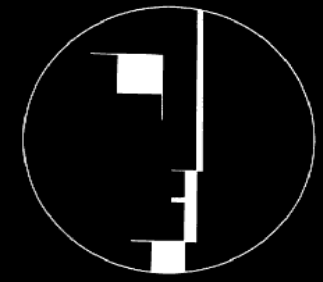
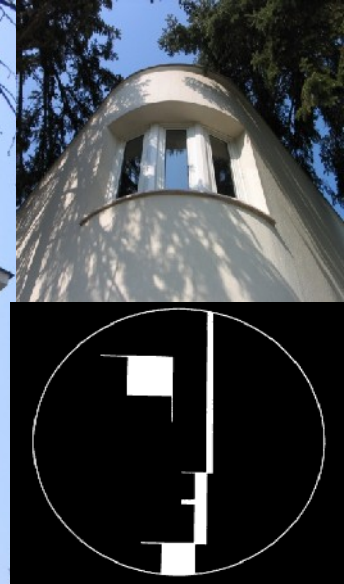
TRADITIONAL PORCHES



FINE ARCHITECTURE



INNOVATIVE SOLUTIONS/BAUHAUS





PROTECTION OF THE BUILT
AND GREEN HERITAGE

B2 Location

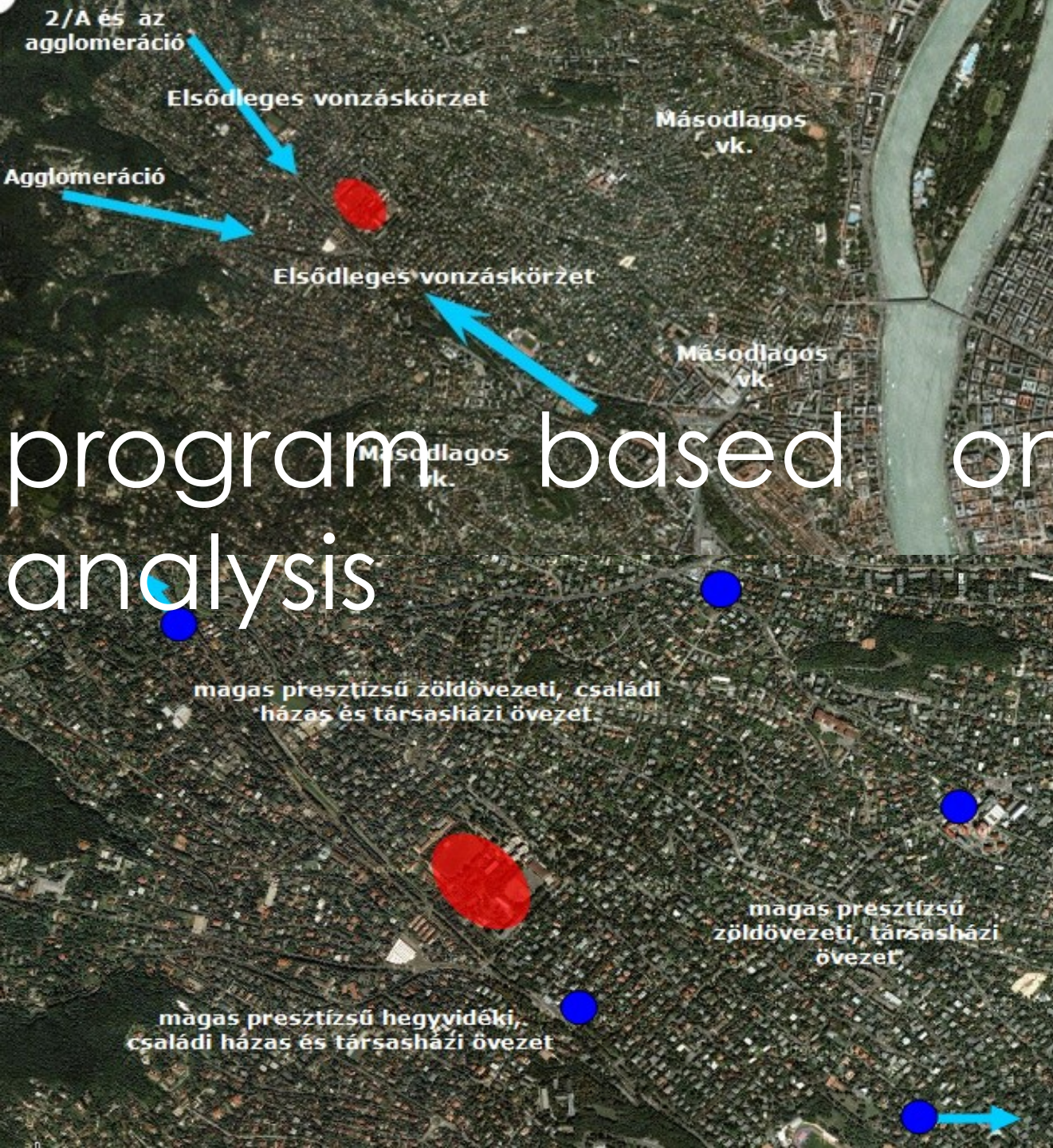
the local public and private interest

P+R P+R P+R P+R P+R P+R P+R P+R P+R P+R P+R P+R P+R P+R P+R P+R P+R P+R P+R P+R P+R P+R



B1 Location

program based on market analysis



P+R P+R P+R P+R P+R P+R P+R P+R P+R P+R P+R P+R P+R P+R P+R P+R P+R P+R P+R P+R P+R P+R



PARK
15 000 M2



OFFICE SPACE
82 492 M2



MARKET
1 500 M2



RIDING HALL
8 343 M2



CATERING AREA
4 289 M2



SPORT
15 647 M2



SPA
2 770 M2



PARKING
80 860 M2



**RETIREMENT HOMES,
PARK OF GENERATIONS**
5 290 M2



KINDERGARTEN
2 645 M2



SHOPS
49 755 M2

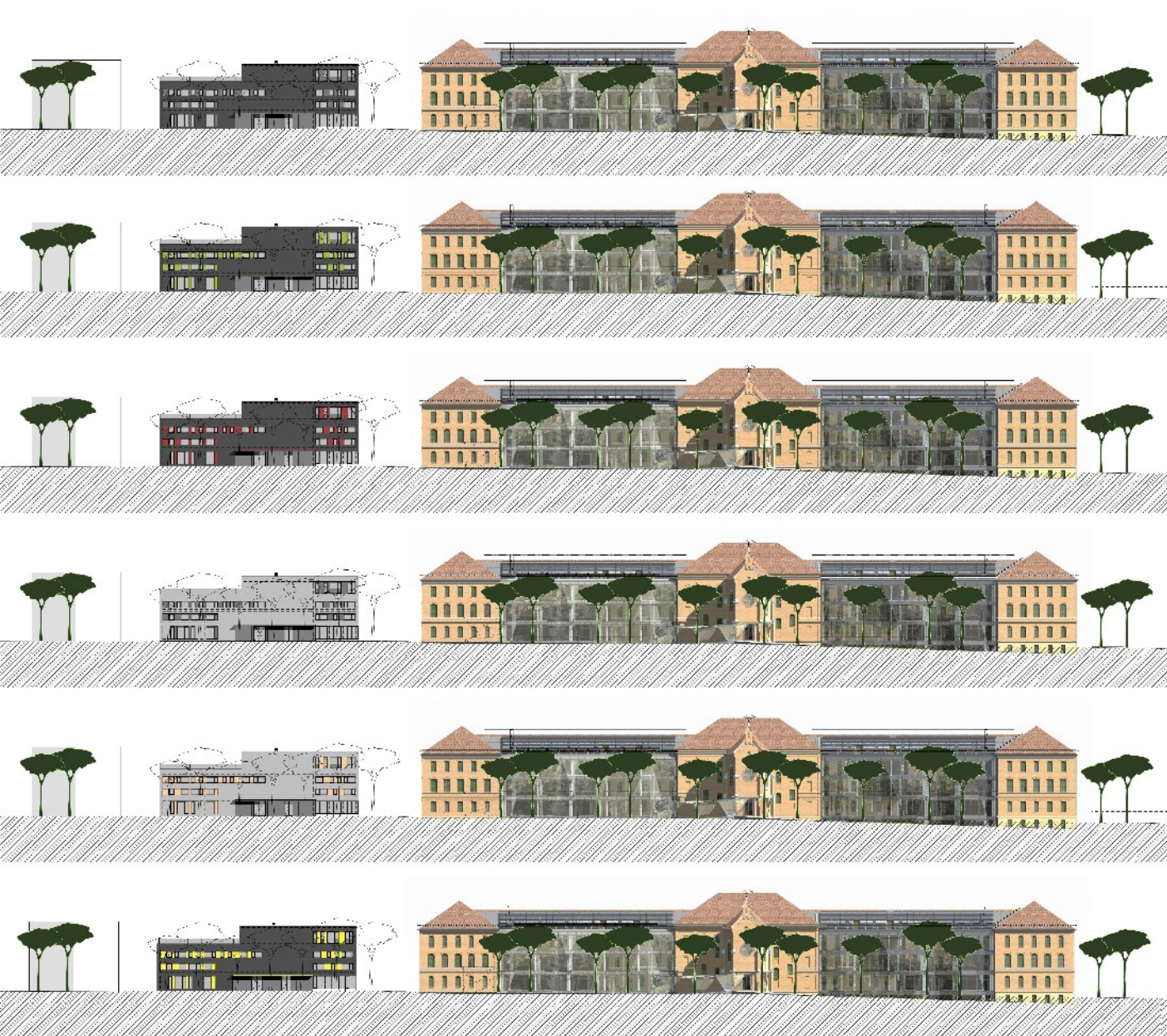


B1 LOCATION



B1 LOCATION – ORIGINAL BUILDING





C2 USE OF SPACE - VISUALISATION

P+R P+R P+R P+R P+R P+R P+R P+R P+R P+R P+R P+R P+R P+R P+R P+R



C2 USE OF SPACE - VISUALISATION



C2 USE OF SPACE - VISUALISATION



C2 USE OF SPACE - VISUALISATION

P+R P+R P+R P+R P+R P+R P+R P+R P+R P+R P+R P+R P+R P+R P+R P+R P+R P+R P+R P+R P+R P+R





C2 USE OF SPACE - VISUALISATION

P+R P+R P+R P+R P+R P+R P+R P+R P+R P+R P+R P+R P+R P+R P+R P+R





C2 USE OF SPACE - VISUALISATION

P+R_{PERIOD}. P+R_{PERIOD}. P+R_{PERIOD}. P+R_{PERIOD}. P+R_{PERIOD}. P+R_{PERIOD}. P+R_{PERIOD}. P+R_{PERIOD}. P+R_{PERIOD}. P+R_{PERIOD}.



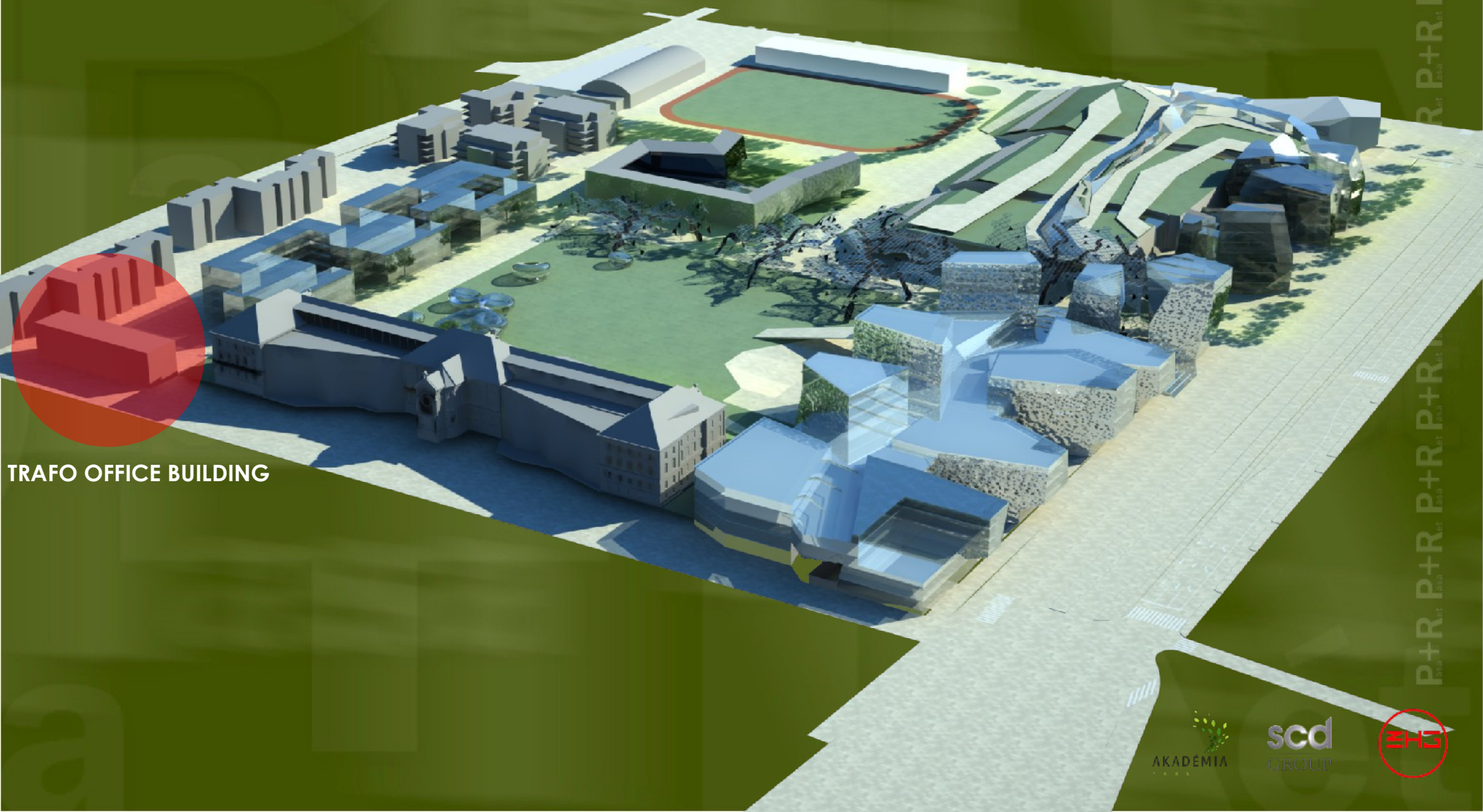


C2 USE OF SPACE - VISUALISATION



C2 USE OF SPACE - VISUALISATION

D3 the designed surroundings and environment



TRAFO OFFICE BUILDING

P+R P+R P+R P+R P+R P+R P+R P+R P+R P+R



D1

THE FINAL APPEARANCE OF THE DESIGN



P+R₂₀₁₇ P+R₂₀₁₈ P+R₂₀₁₉ P+R₂₀₂₀ P+R₂₀₂₁ P+R₂₀₂₂ P+R₂₀₂₃ P+R₂₀₂₄ P+R₂₀₂₅



D1

THE FINAL APPEARANCE OF THE DESIGN





D3 the designed surroundings and environment





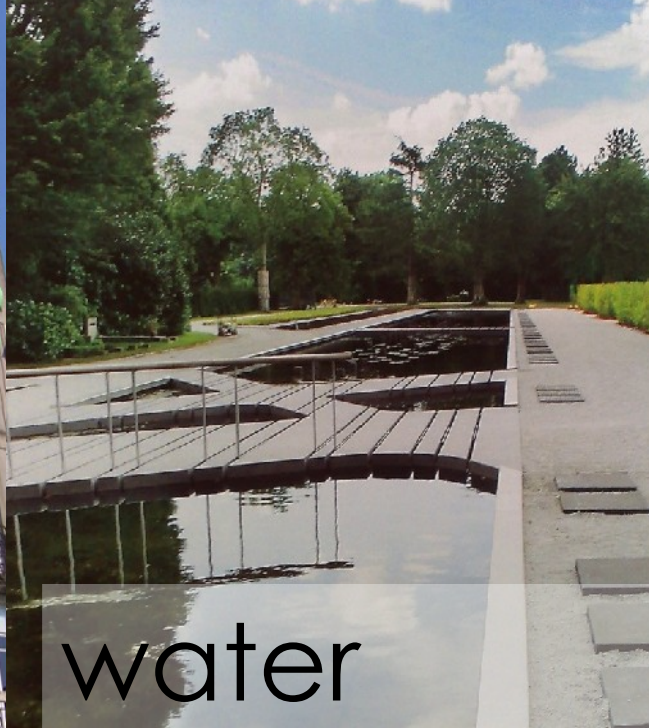
focus

- passive protection
Heat protection, shade protections
heat traps
- energy consumption
Fossil and renewable energy usage
- energy sharing
Decentralized or centralized,
together or separate, we can
connect to the system to the
completed development
- waters
rainwater
- inner building technical solutions
Attachment according to the
temperature of the used material.
Radiant heating-cooling system

E1 human comfort of the building



Ground protection



water



air



Waste management



Sound, vibration



Landscape protection

E3 energy efficiency and eco-friendly measures



