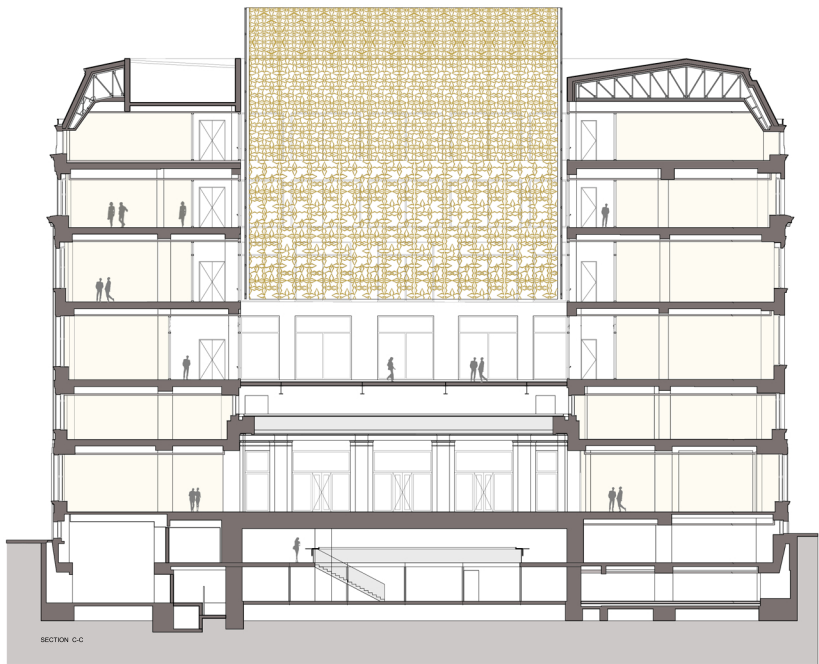


- Roof
+33.80
- Top of Parapet
+30.35
- Mechanical
4th Floor
+27.35
- 4th Floor
+23.60
- 3rd Floor
+19.11
- 2nd Floor
+14.10
- 1st Floor
+8.50
- Mezzanine
+4.89
- Ground floor
+0.00
- Basement
-3.40
- Cellar
-6.30



SECTION C-C