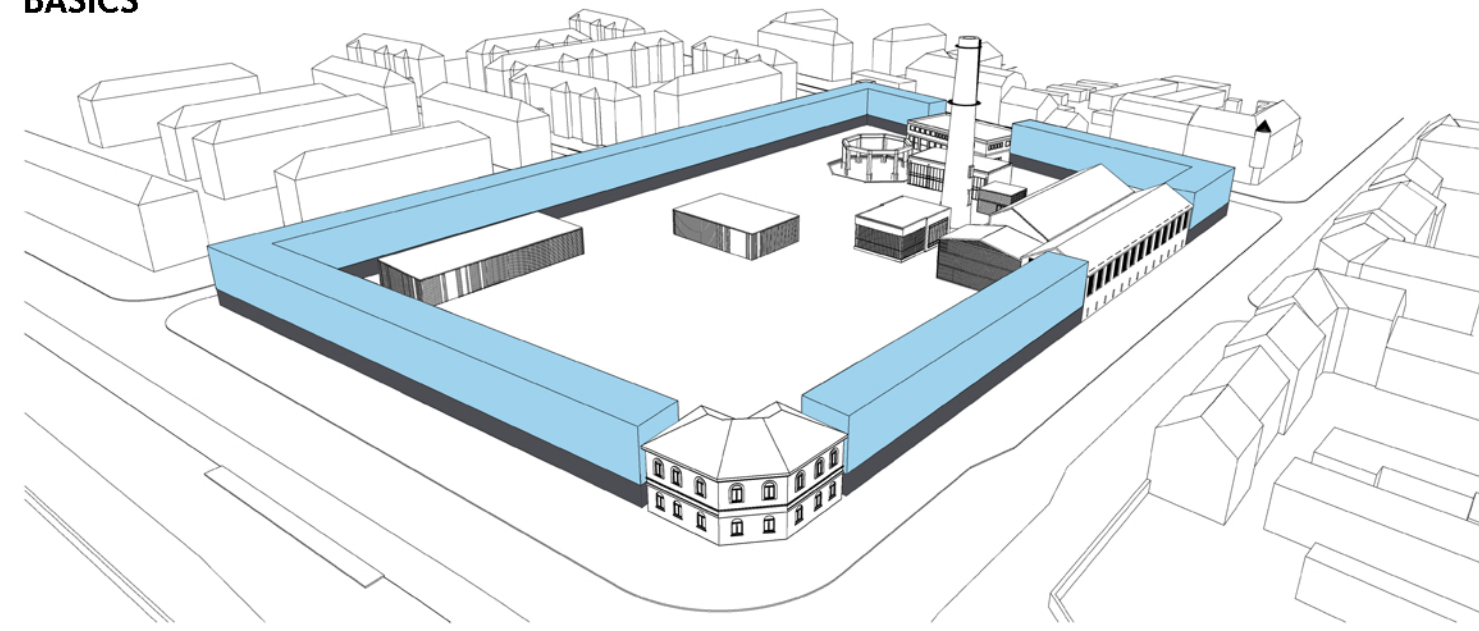
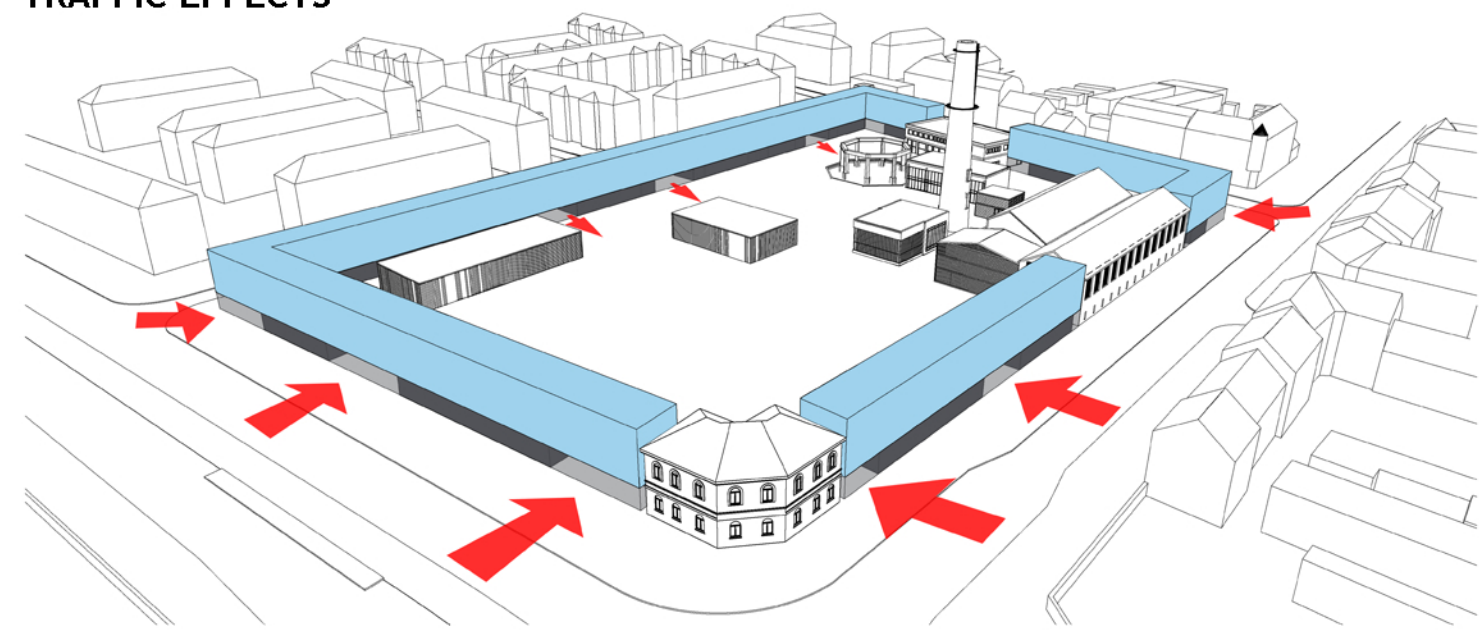


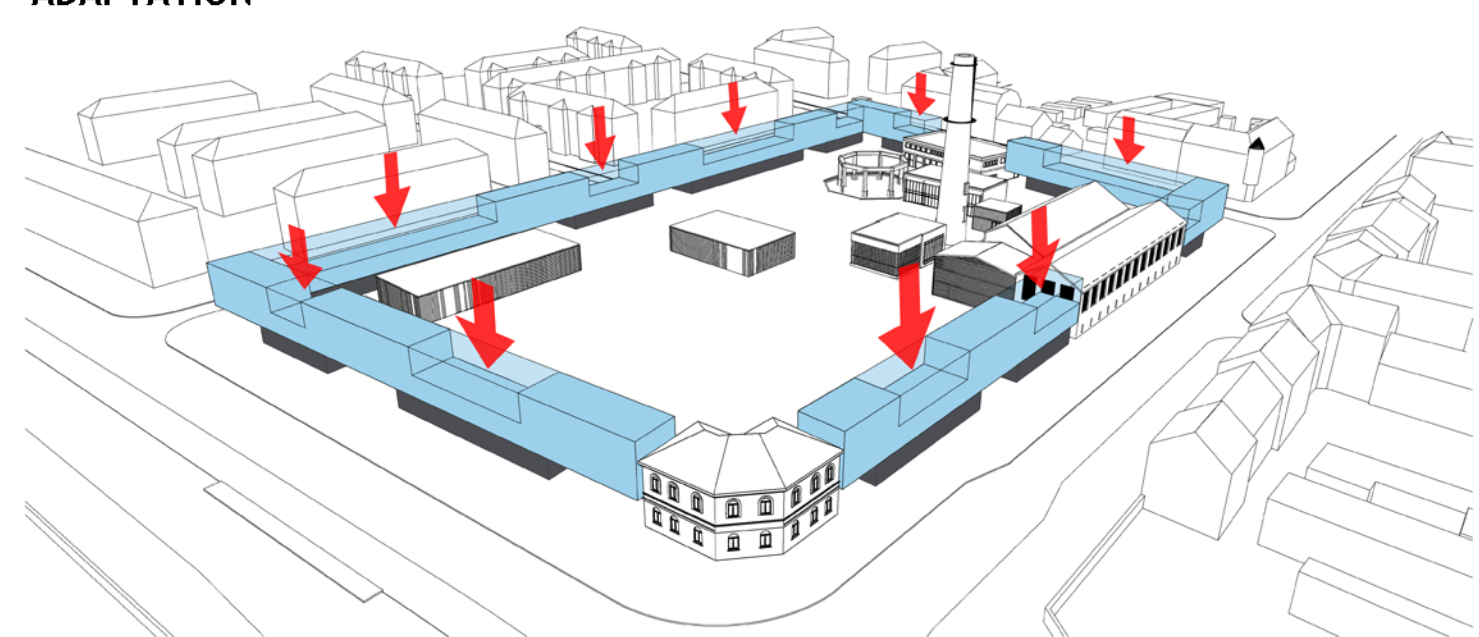
BASICS



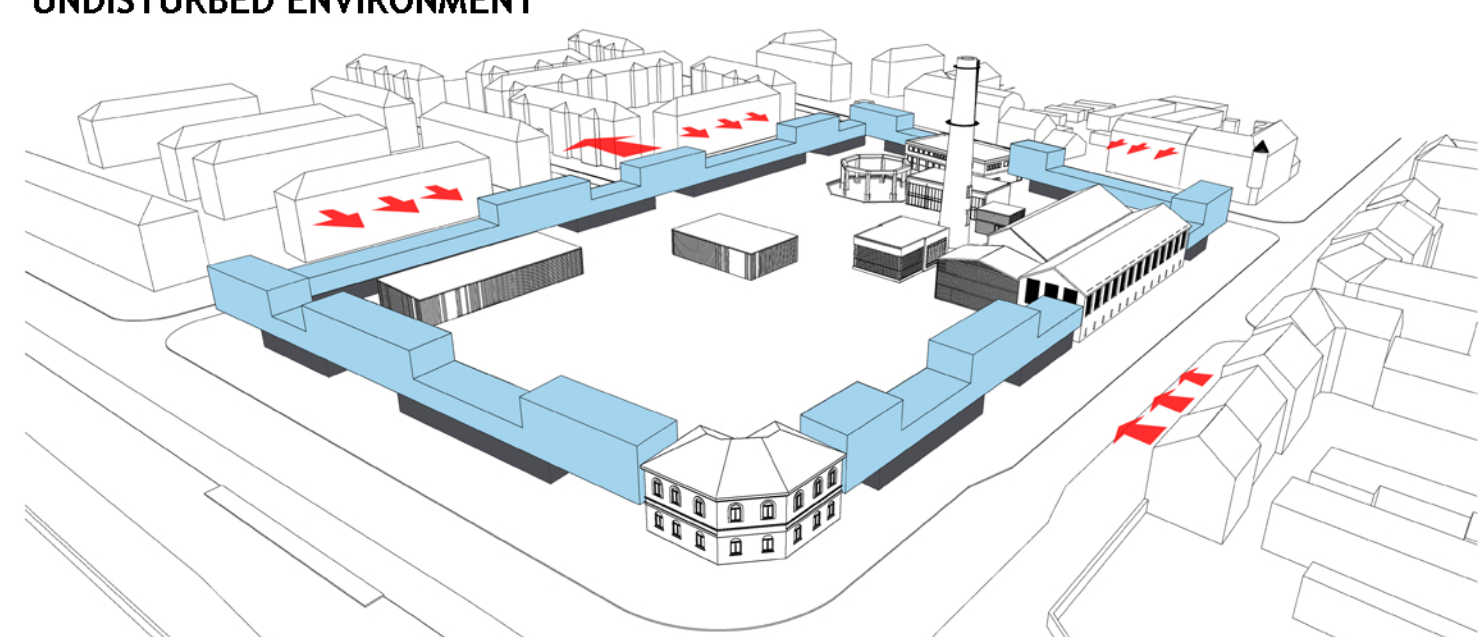
TRAFFIC EFFECTS



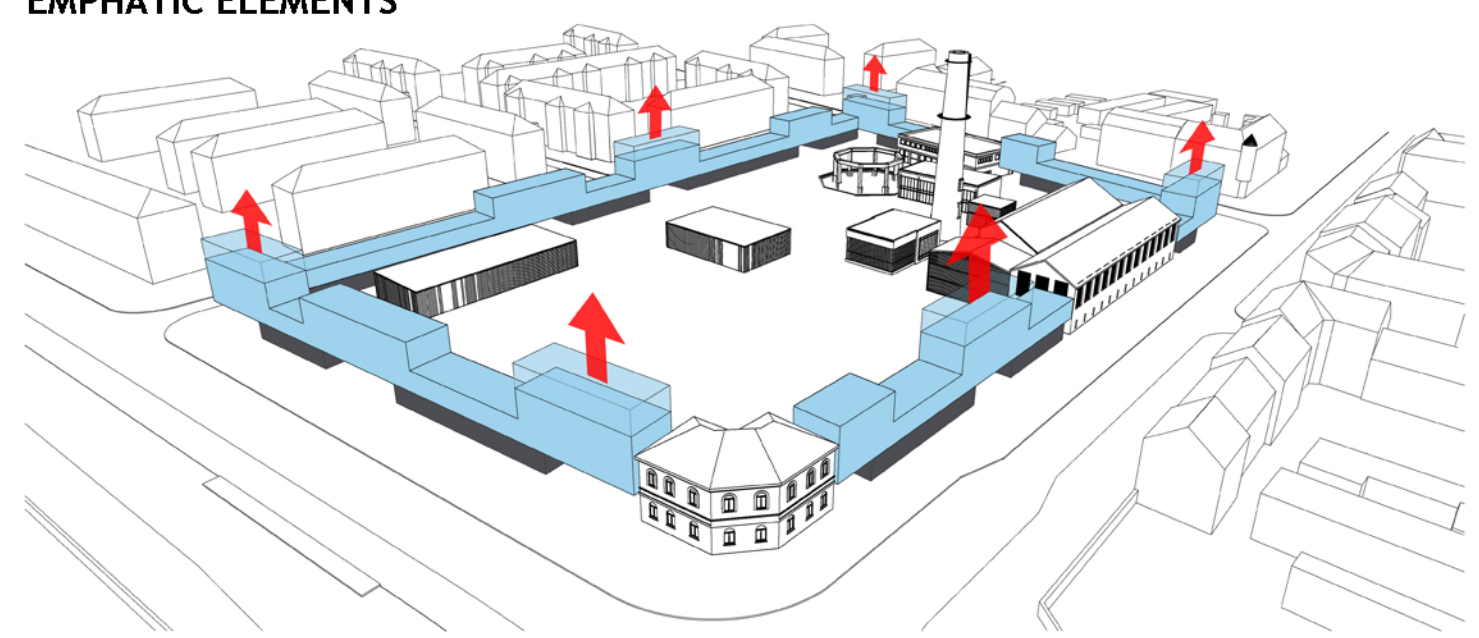
ADAPTATION



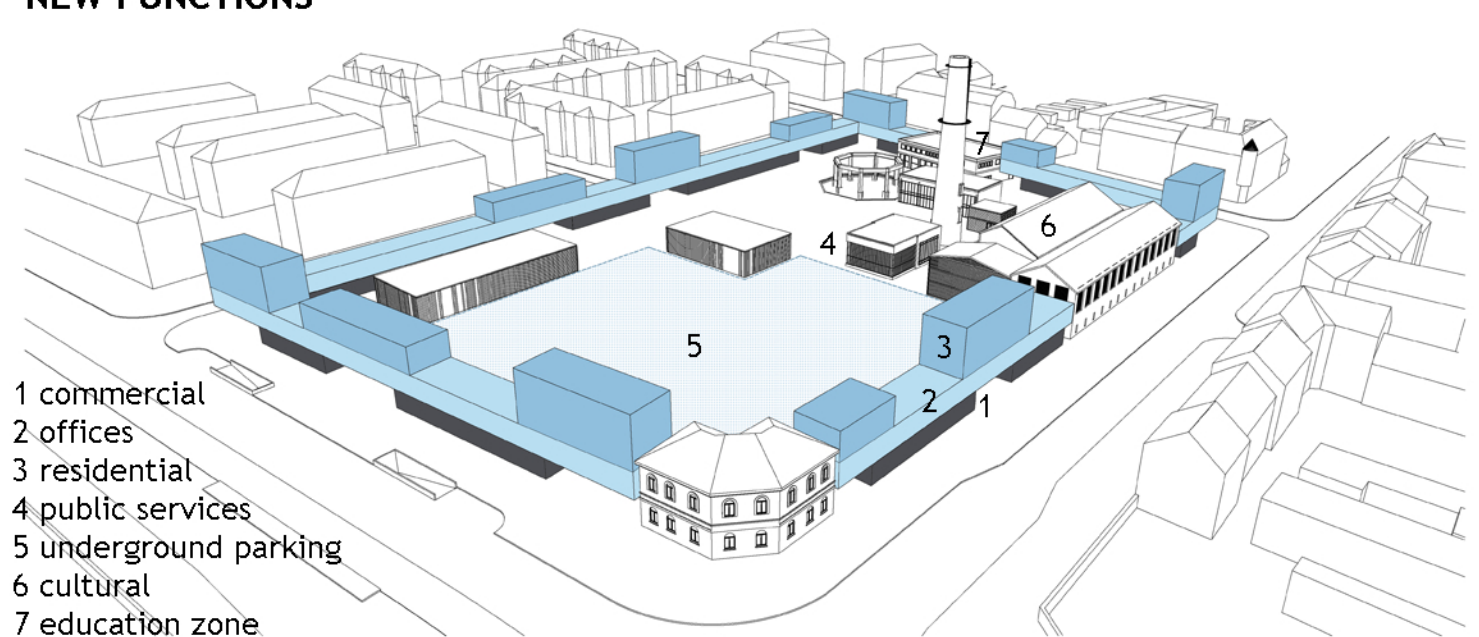
UNDISTURBED ENVIRONMENT



EMPHATIC ELEMENTS



NEW FUNCTIONS



- 1 commercial
- 2 offices
- 3 residential
- 4 public services
- 5 underground parking
- 6 cultural
- 7 education zone

INTERVENTION - 'The Wall'

By the characteristic differences and discovered values at the actual state, principles of our intervention are the followings:

1. The feeling of the inside world is so strong that merging it with the local environmental elements would affect value loss. We have to keep and redefine this feeling in a way that does not mean isolation. Defining border lines between two different functional texture is not equal with a seclusion - it is just a behavior.
2. The buildings of gasworks has a quality of variegation which excels from the probably featureless solid environment. This unique outlook allows the place to rise in a key-position, in a central role.
3. It's important now to define a connection that is lost because of the past industrial use. The place of action-reaction between different functions and the method of mutual respond have to be found.
4. Basics have to be so nature, clear and readable for everyone that take place in the area according to scale, and fulfill it with their impact.
5. The border lines of the action zone has to be defined as it must not be a barrage but a significant add-on to the place that frames the new central function.

We suggest a kind of framing building line - 'wall' - that can manage all the mutual reactions between the mainly residential environment and the rehabilitated industrial -new 'city center' - block. A 'bridge' which connects the place formally, in scale, by material use and with functionality.

NEW ROLE - 'The red balloon'

The design method is an effect-dependent inverse, reductive design, and the buildings are formed by the following aspects:

1. Public pedestrian traffic, walkways system, commercial shops and pavilions, city life on ground floor.
2. Undisturbed outlook zones, comfort rate and street section scale for neighbours.
3. Main city nodes added up to more significant design elements.

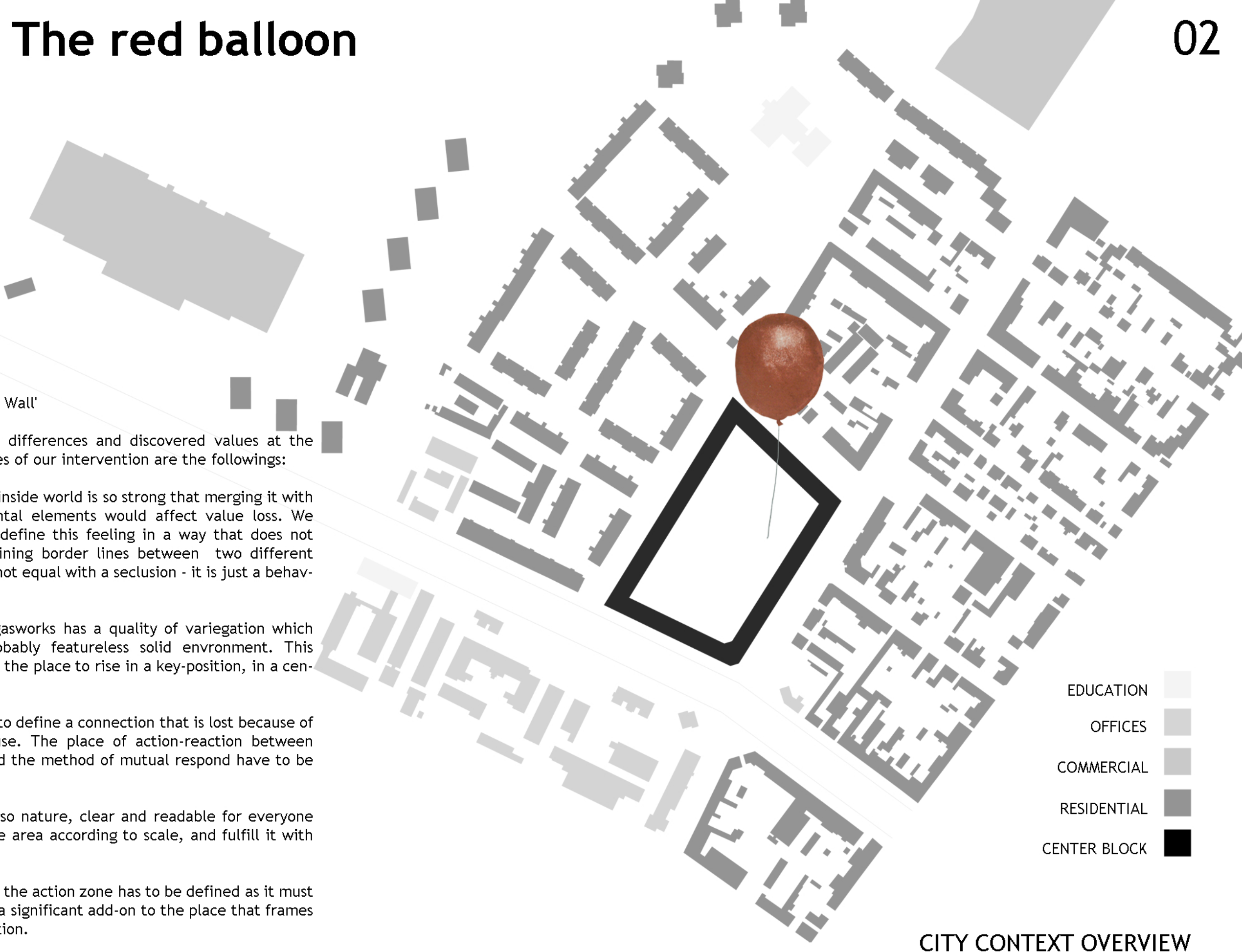
New functions for the 'wall' are commercial, offices, residential floors. These make a bridge to old buildings with cultural and educational role. Because of the existing high values of the industrial buildings the challenge is not to utilize them but to find the basics and situations where these values hopefully revive.

PLAZAS

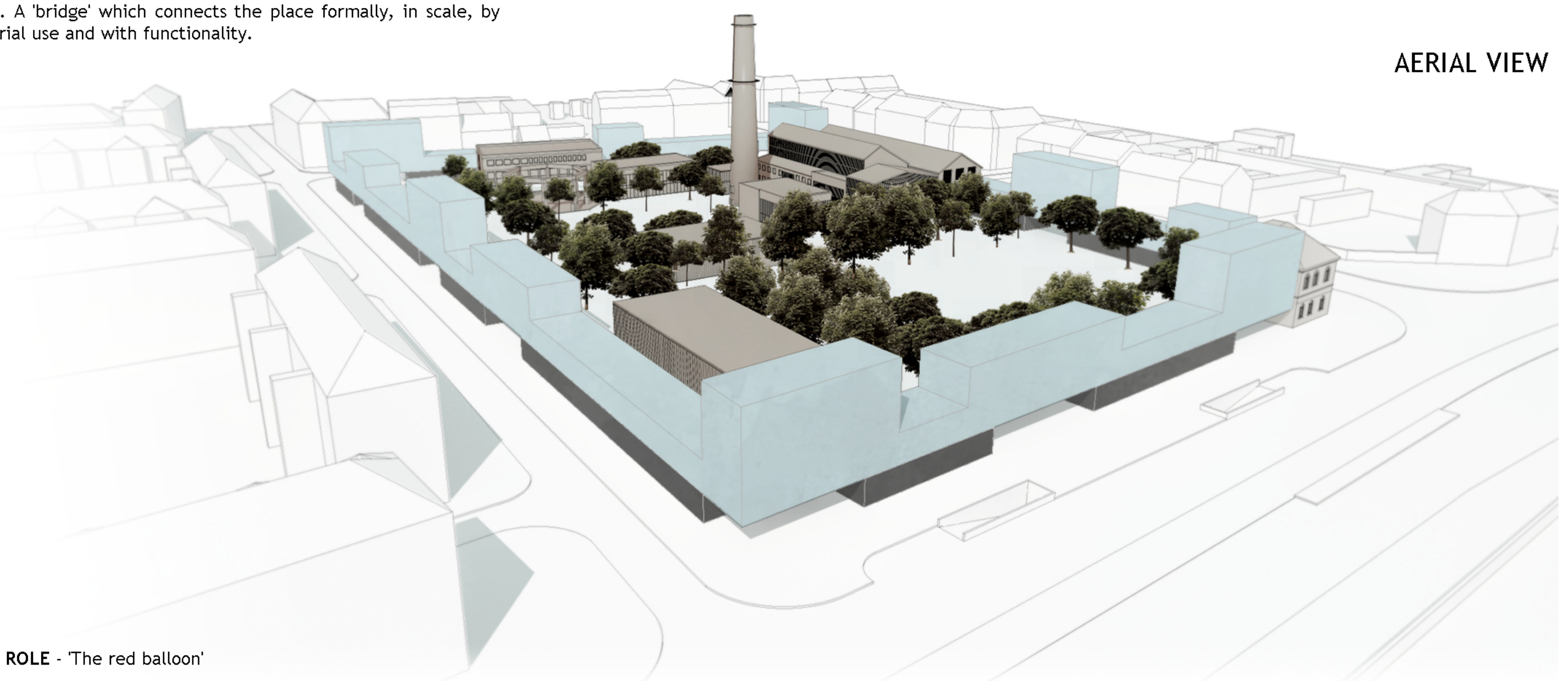
Within the site three central plazas have been created:

1. Event zone (great programs, concerts, local 'city days' like 'Szeged Days', 'Beer Festival', 'Wines festival', 'Fish soup festival', 'Grill festival', etc.)
2. City life zone - open space for everyday life (terraces, small concerts, sales...)
3. Arts street (functions connected to education, cultural outdoor programs)

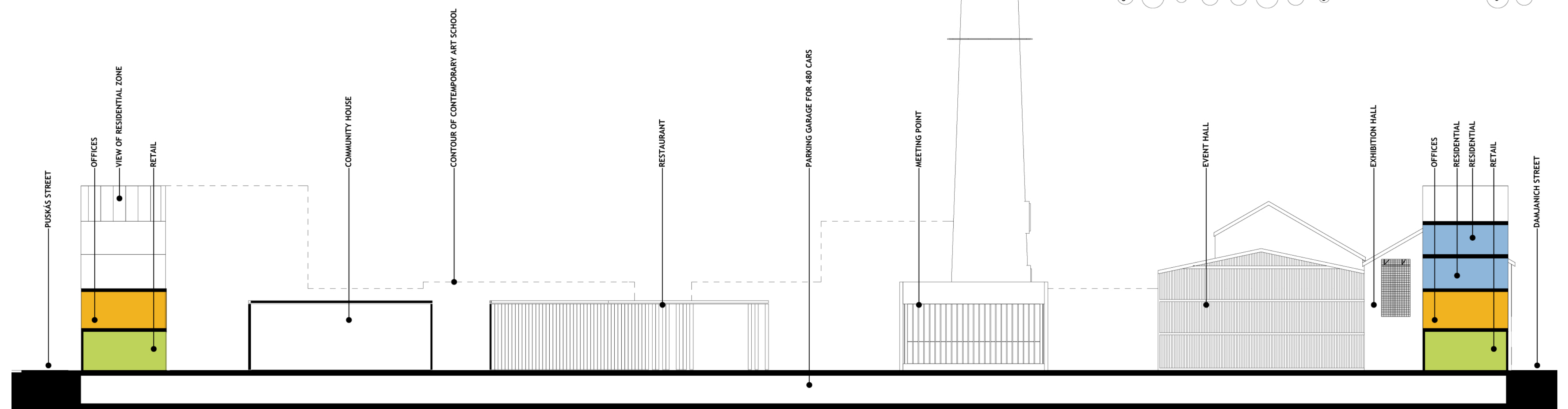
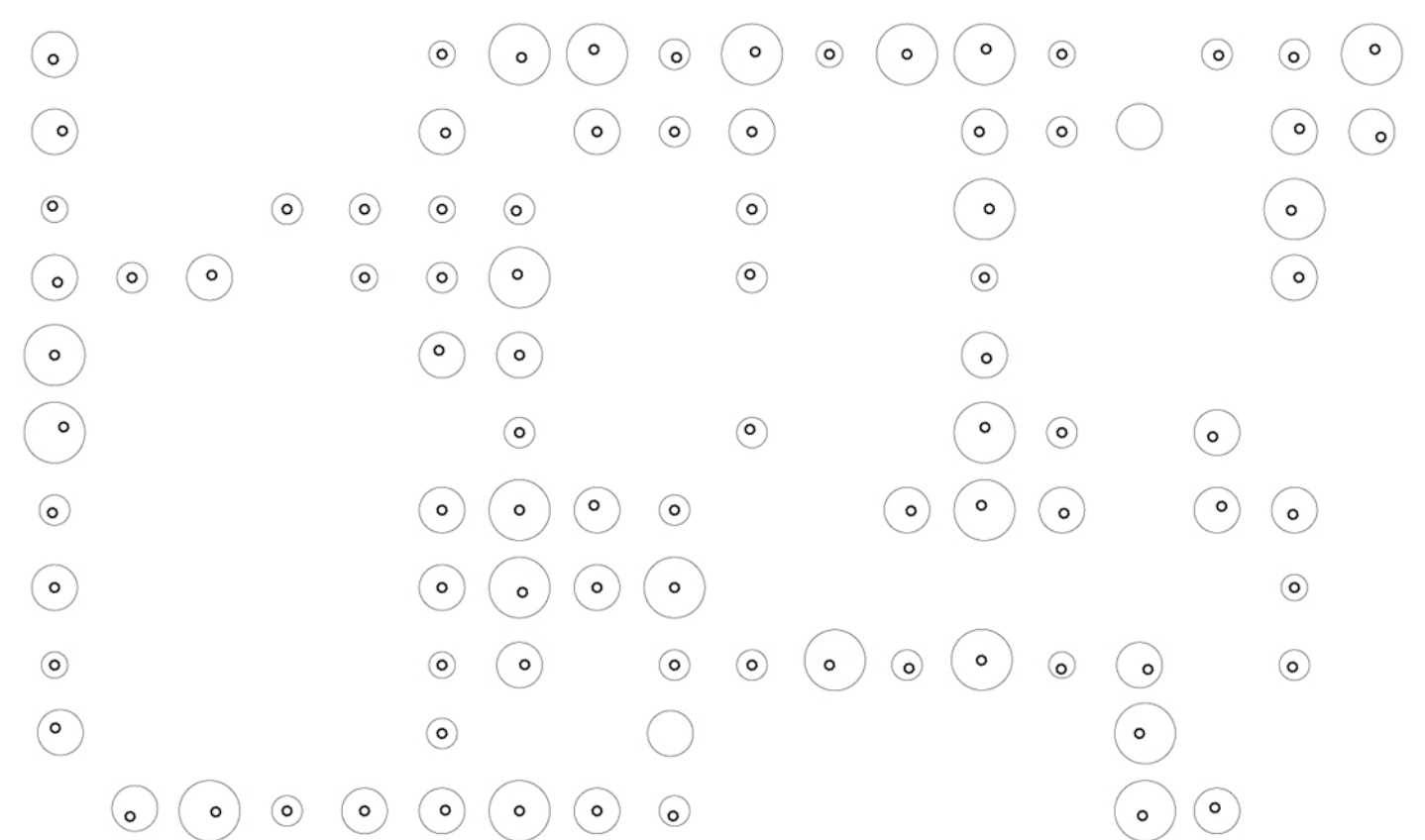
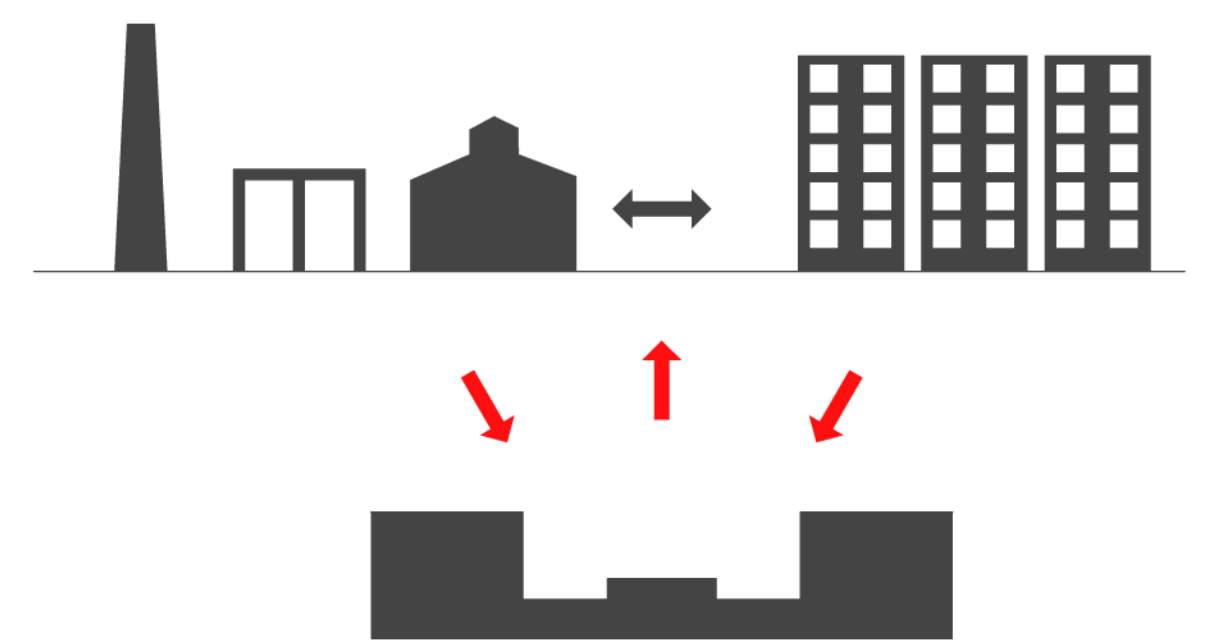
In locating these zones, tree's plantation has a huge effect. Rasterized tree placing give the huge inside square scale and make it usable and understandable. A one-level underground garage would be constructed under the new buildings and event zone on Kossuth Avenue's side.



CITY CONTEXT OVERVIEW



AERIAL VIEW



SECTION M 1:250