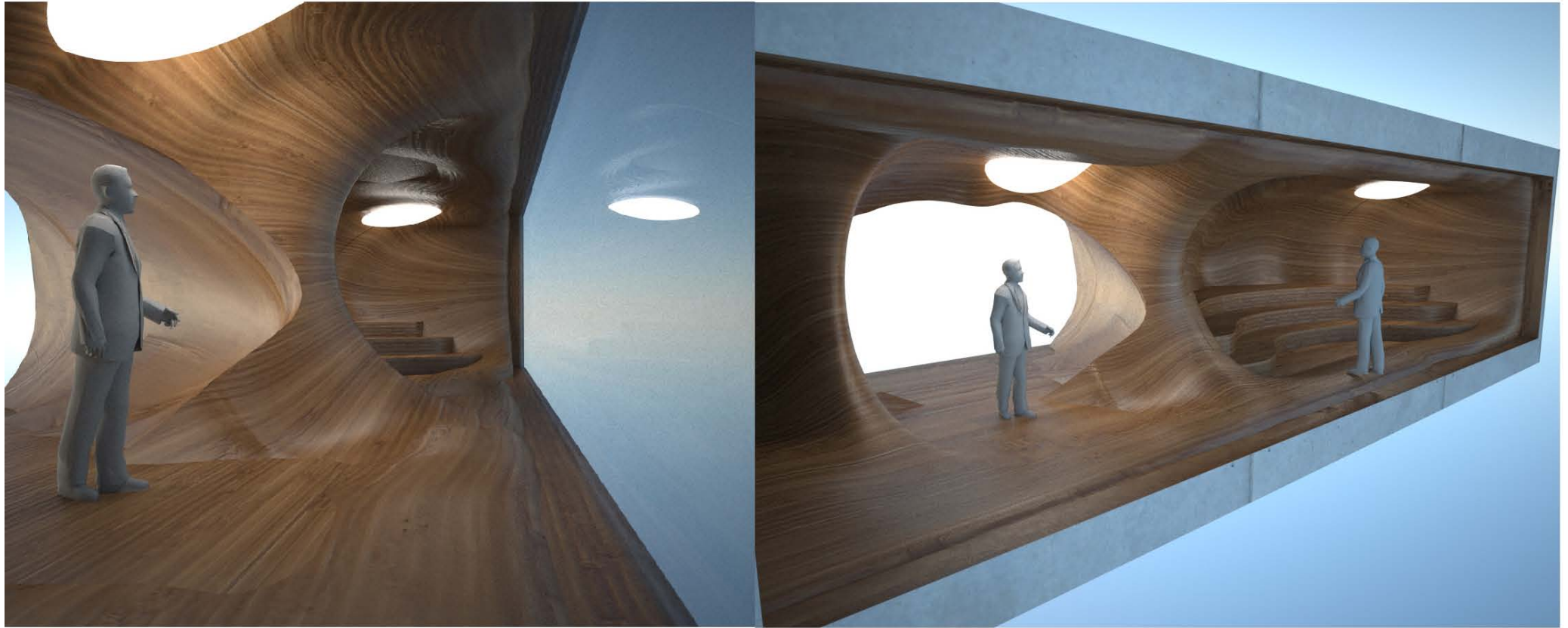
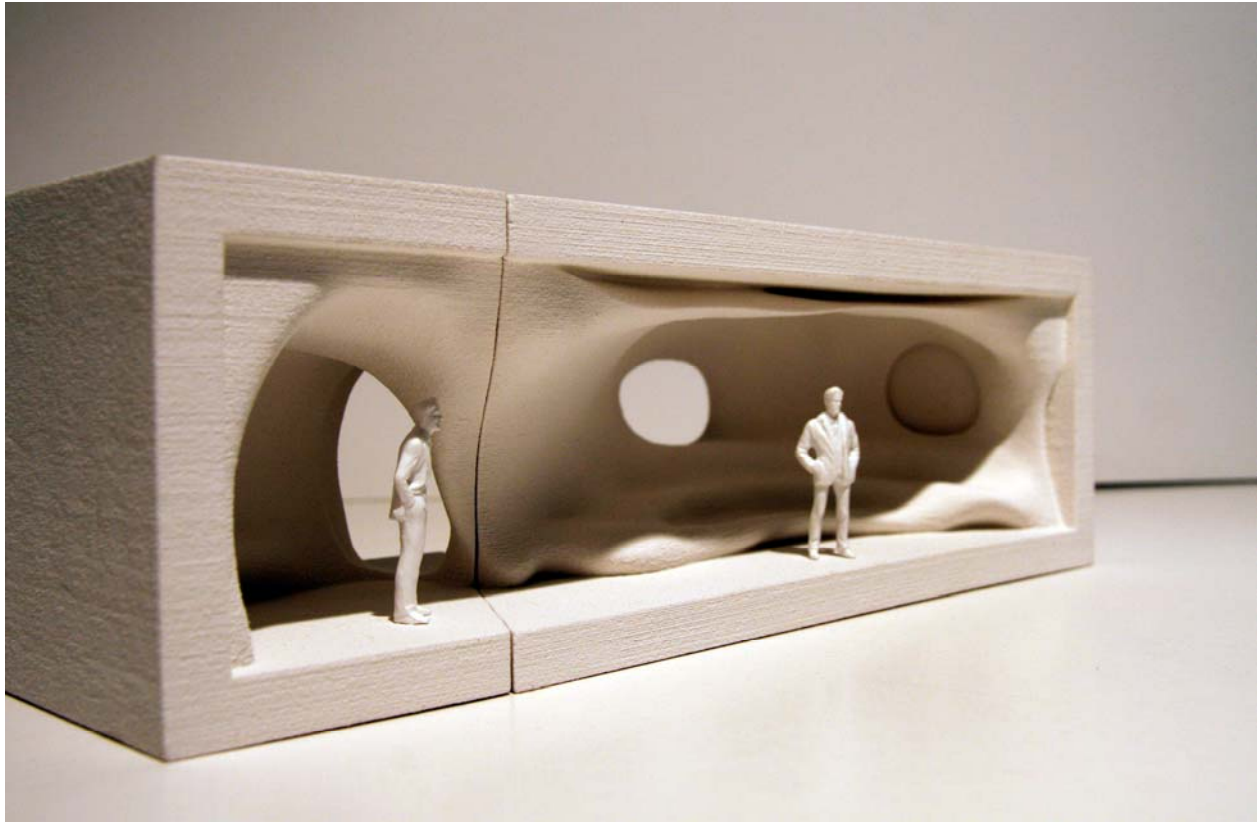


SKISSEMODELL







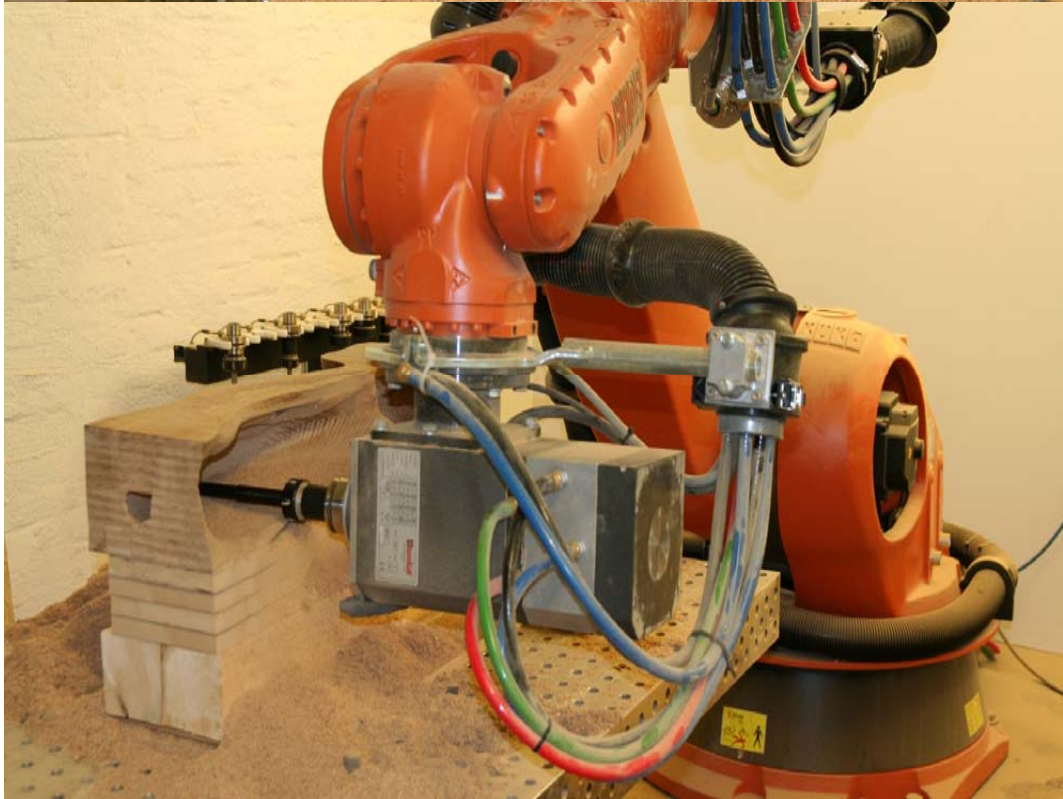
KUKA HA100

The industrial robot has a spindle mill
7 axis – 6 on the robot – 1 on the table –
in x-y -z coordinates
CNC -mill 24.000 rotations per minute

The robot is a tool invested for the purpose
of
comprehending and develop new
possibilities. We believe that the architects
must have a great influence in the industrial
production line

Question of ownership in the building
industry;

- Digital information as part of the
knowledgebase.
- The value of information at all steps in
the production line
- create uniqueness in mass production















3691 GRANSHERAD

TLF.: 350 19 350
FAKS: 350 19 354
www.tinnosetsag.no

LENGDE

104

MIDDEL HØYDE

450

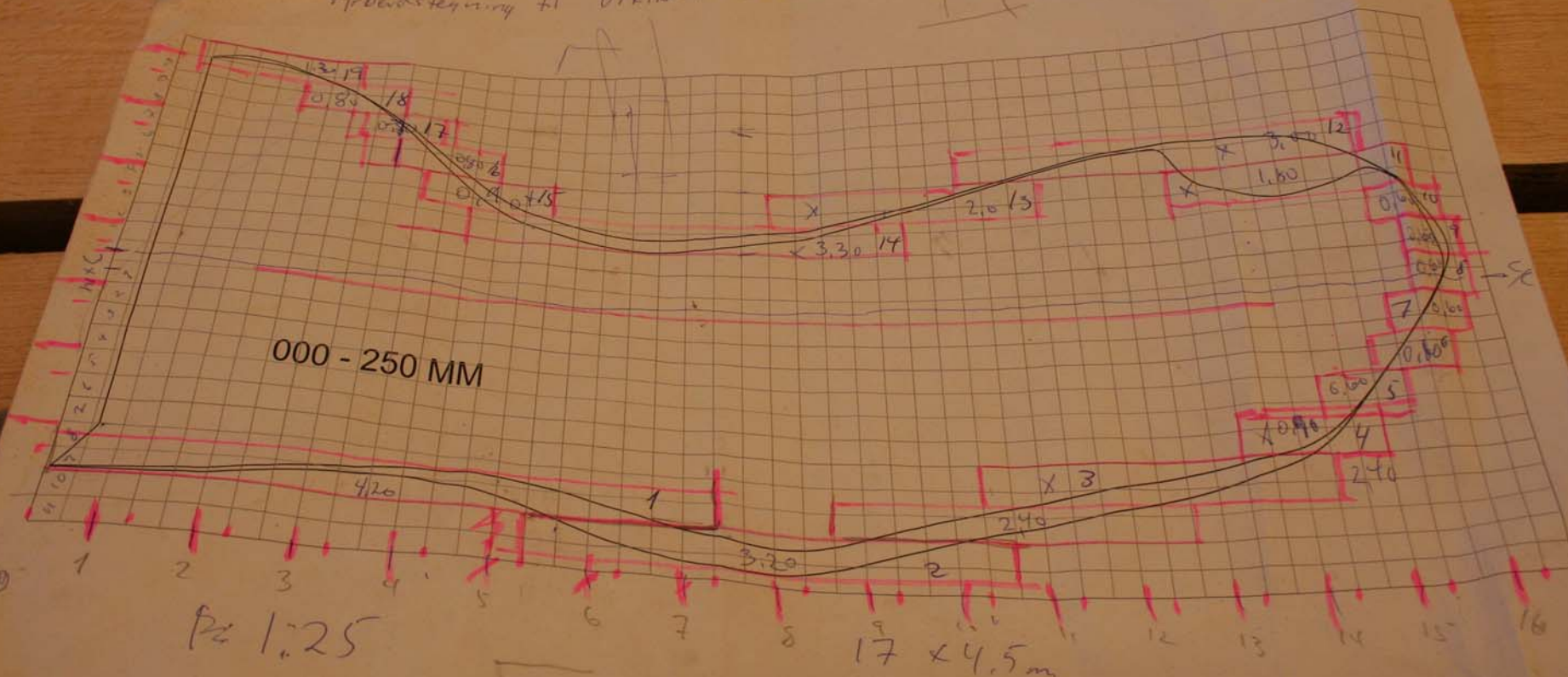
X

37

Arbeidsstegning til "UTKIRK PÅ JERKIN"



83.5
71. - 2.2



000 - 250 MM

1:25

17 x 4.5 m

49 x 0.20
9.8

















































