

NUK2

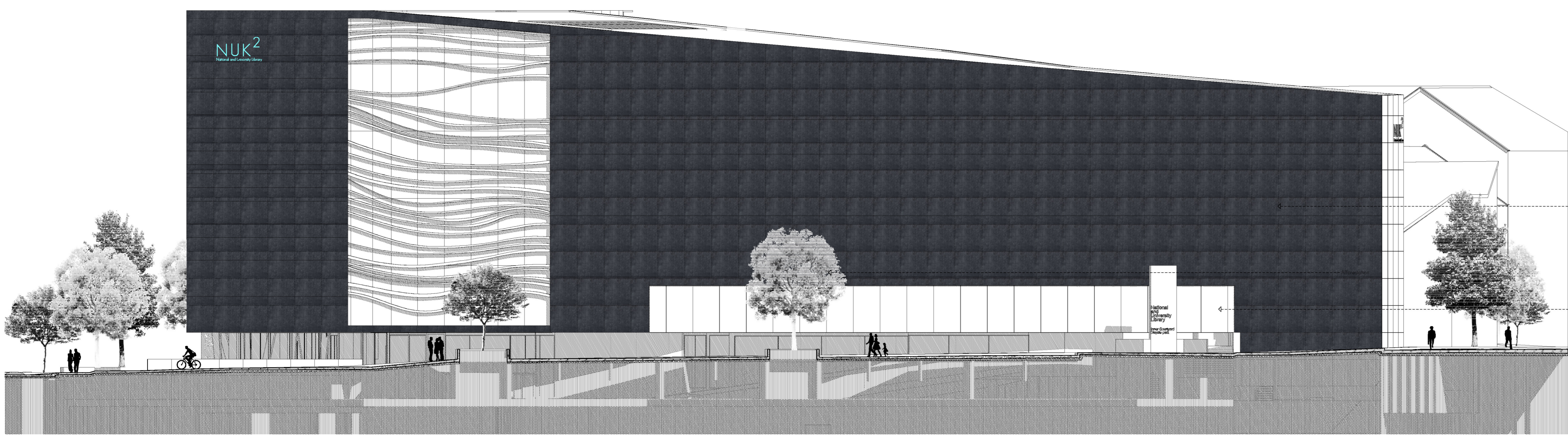
National and University Library

L8

Material concept: The used building materials that are valuable, high quality, and can help us to define the face of the building. At the same time, especially in the outer space in contact with nature, the building has an important aspect of playing a role in energy balance and proper microclimate. It is important that the functions of the green and possible post-restoration with a high level of utilization.

Window lines in order to increase the number of natural lighting

C-C SECTION SCALE 1:200



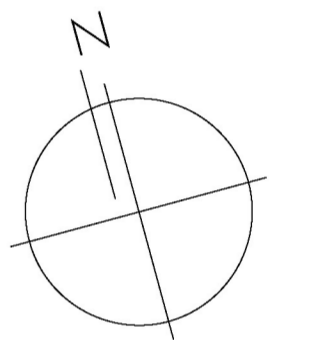
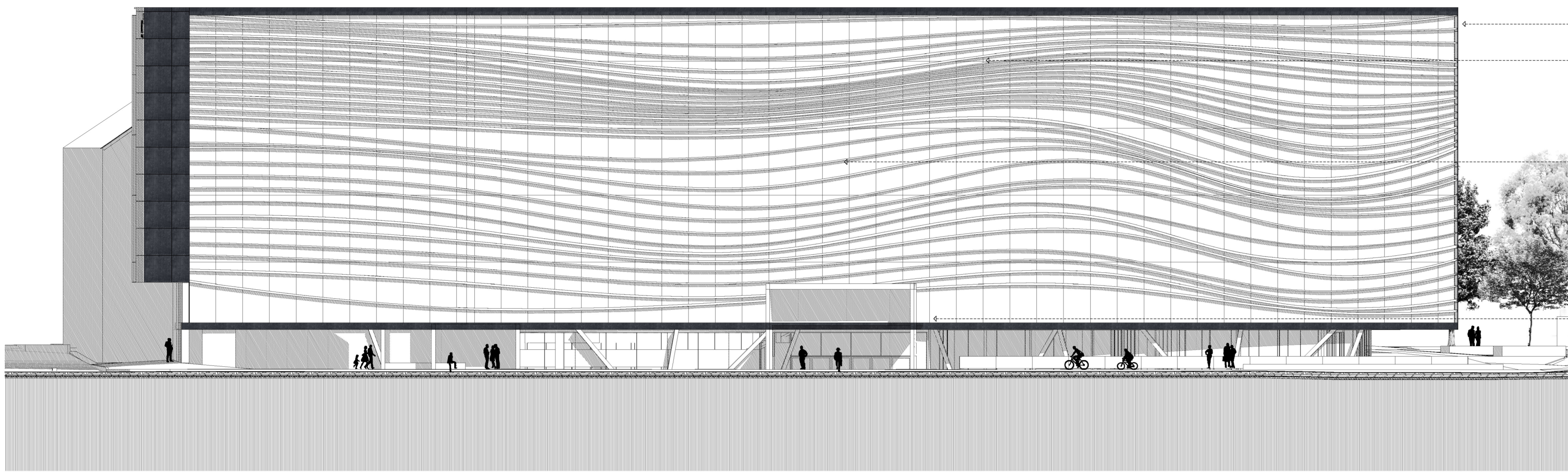
Using the maximum 250cm high vegetation

Slide structures were designed in front of the large transparent surface on south facade that is partially shaded sunlight while ensuring the efficient operation of the photovoltaic glazing surface. Translucent screens to diffuse sunlight in order to help the building for the operation of power-energy generation.

Roof on a page of book shelf surface

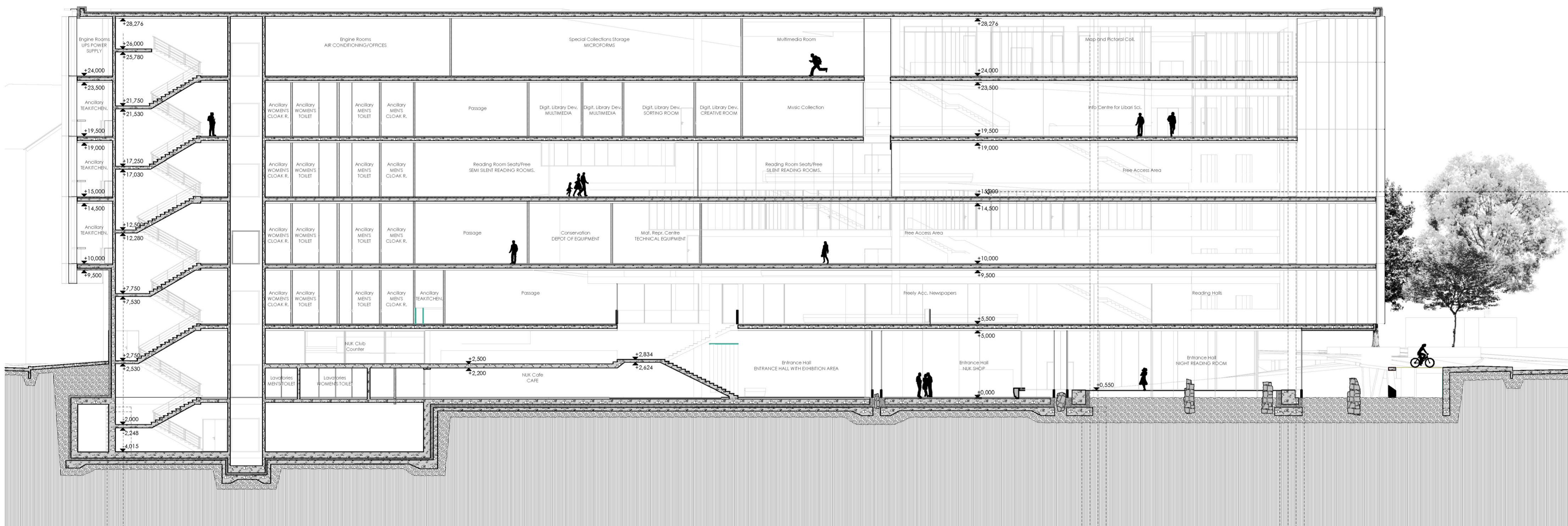
Color roof - showing the overhead street canopy in front of the entrance

SOUTH FACADE SCALE 1:200



Slide structures were designed in front of the large transparent surface on south facade that is partially shaded sunlight while ensuring the efficient operation of the photovoltaic glazing surface. Translucent screens to diffuse sunlight in order to help the building for the operation of power-energy generation.

EAST FACADE SCALE 1:200



LEGEND

- WALLS
 - LOAD-BEARING STRUCTURE
 - DRYWALL SYSTEM
 - SOUND-PROOF DRYWALL SYSTEM
- SURFACES
 - EXISTING ROMAN RUNS
 - RECONSTRUCTED ROMAN PAVEMENT
 - GRAVEL LAYER
 - TRANSPARENT SURFACES
 - WATER SURFACE
 - GRID STRUCTURE
 - LAWN
 - GROUND
 - GRAPHICS ON THE FLOOR
- DOORS/WINDOWS
- OBJECTS

VIEW FROM THE INNER COURTYARD FROM PERSPECTIVE

