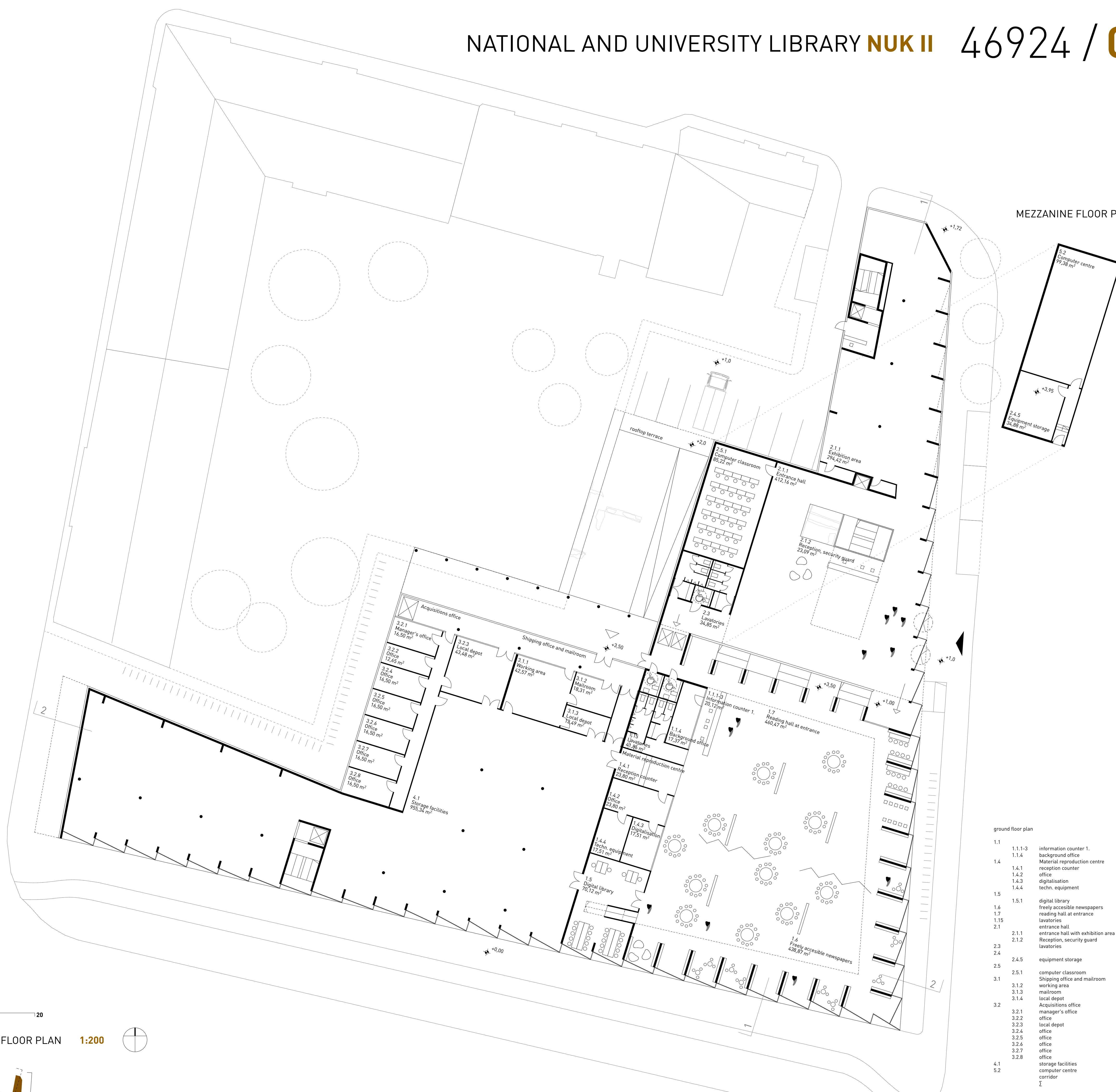


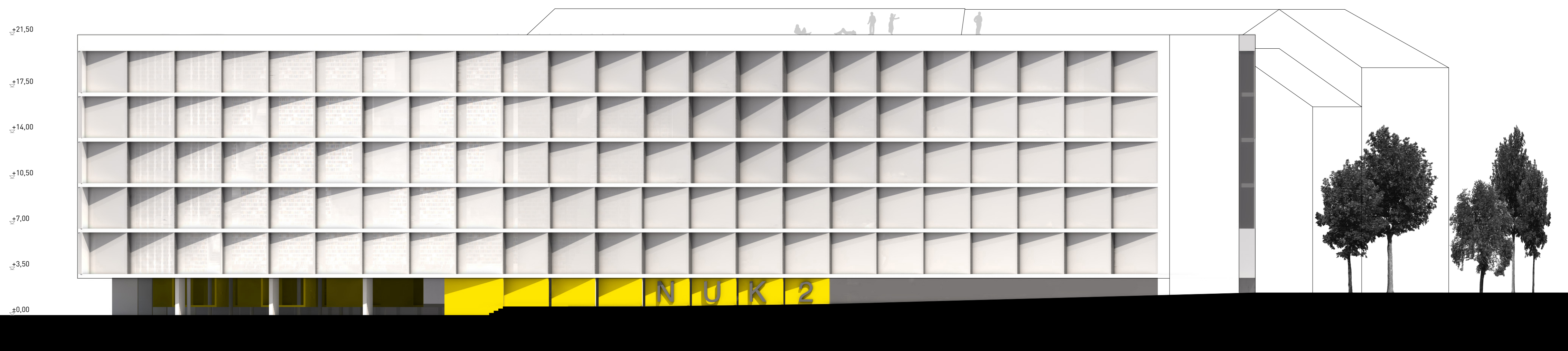
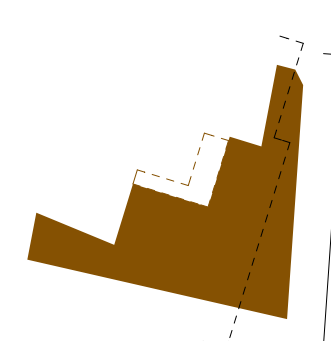
MEZZANINE FLOOR PLAN 1:200



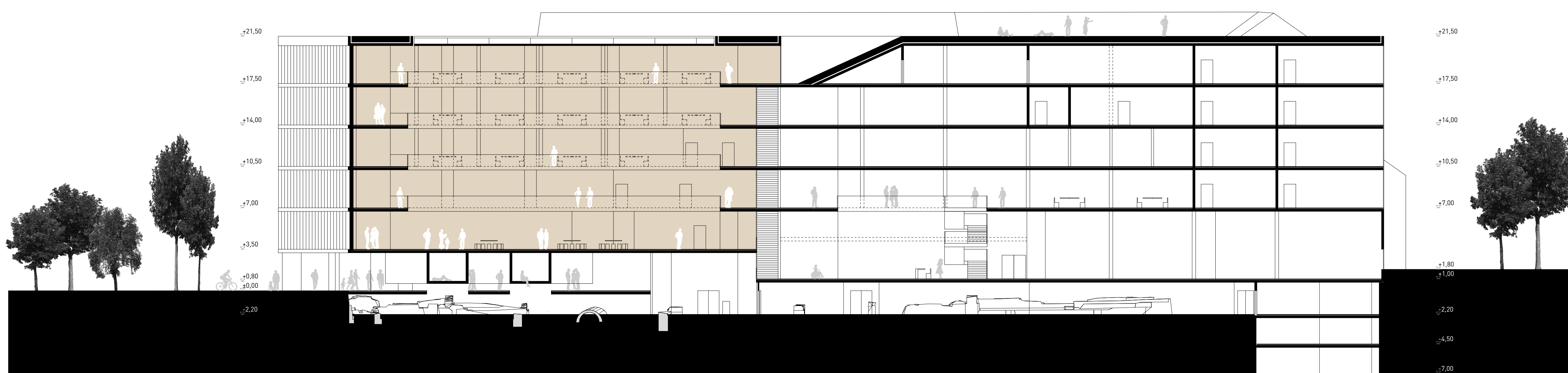
ground floor plan

1.3	1.1.1-3	information counter 1.	20,12	m ²
	1.1.4	background office	17,37	m ²
1.4		Material reproduction centre		
	1.4.1	reception counter	23,80	m ²
	1.4.2	office	23,80	m ²
	1.4.3	digitalisation	17,51	m ²
	1.4.4	techn. equipment	17,51	m ²
1.5		digital library		
	1.5.1	digital library	70,12	m ²
1.6		freely accessible newspapers	438,87	m ²
1.7		reading hall at entrance	460,47	m ²
1.15		lavatories	41,86	m ²
2.1		entrance hall		
	2.1.1	entrance hall with exhibition area	706,58	m ²
	2.1.2	Reception, security guard	23,09	m ²
		lavatories	34,85	m ²
2.3		lavatories		
2.4		equipment storage	34,88	m ²
2.5		computer classroom	85,22	m ²
3.1		Shipping office and mailroom	30,30	m ²
	3.1.2	working area	42,57	m ²
	3.1.3	mailroom	18,31	m ²
	3.1.4	local depot	13,49	m ²
3.2		Acquisitions office		
	3.2.1	manager's office	16,50	m ²
	3.2.2	office	12,65	m ²
	3.2.3	local depot	42,48	m ²
	3.2.4	office	16,50	m ²
	3.2.5	office	16,50	m ²
	3.2.6	office	16,50	m ²
	3.2.7	office	16,50	m ²
	3.2.8	office	16,50	m ²
4.1		storage facilities	955,34	m ²
5.2		computer centre	99,38	m ²
		corridor	217,44	m ²
		Σ	3548,24	m²

GROUND FLOOR PLAN 1:200



EAST FACADE 1:200



01 SECTION 1:200