



ONE HOUSE TO FIT THEM ALL

Small cabins are usually the ultimate places to relax.

A tiny house is the hidden place of a couple or a single person to hide away from the noisy city and noisy other people.

But what if we are different and we like to share good times and hide together with many friends?

What if instead of a space of Zen we need a hidden party place?



ONE HOUSE TO FIT THEM ALL

Our concept is about a small cabin that contains a fully equipped community space inside by expanding the A-frame with sleeping capsules - fitting 8+ people.

It's a house for you and all your friends.

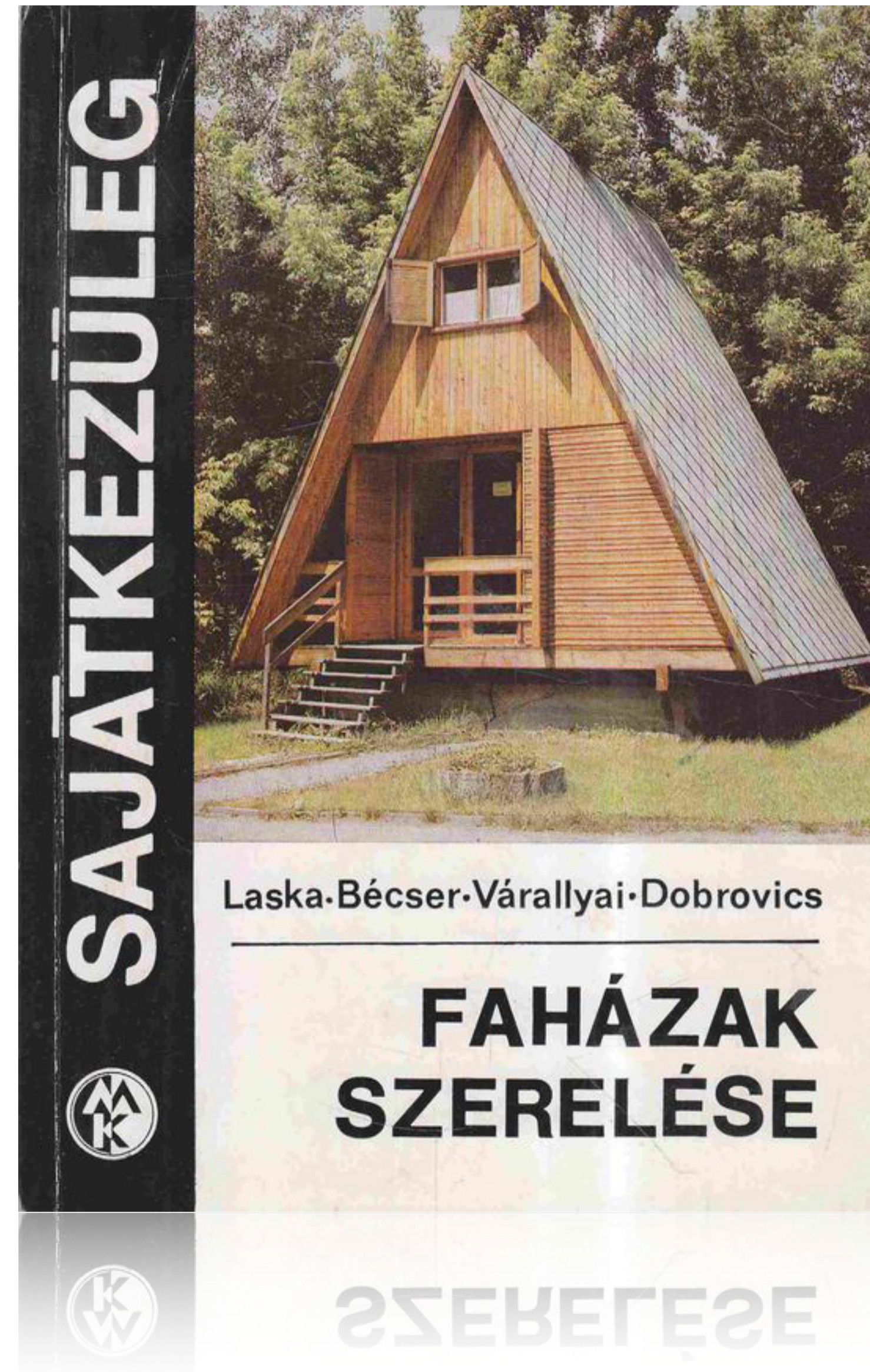
A-frame has a history.

We all know Czech/alpine wooden houses as old friends.

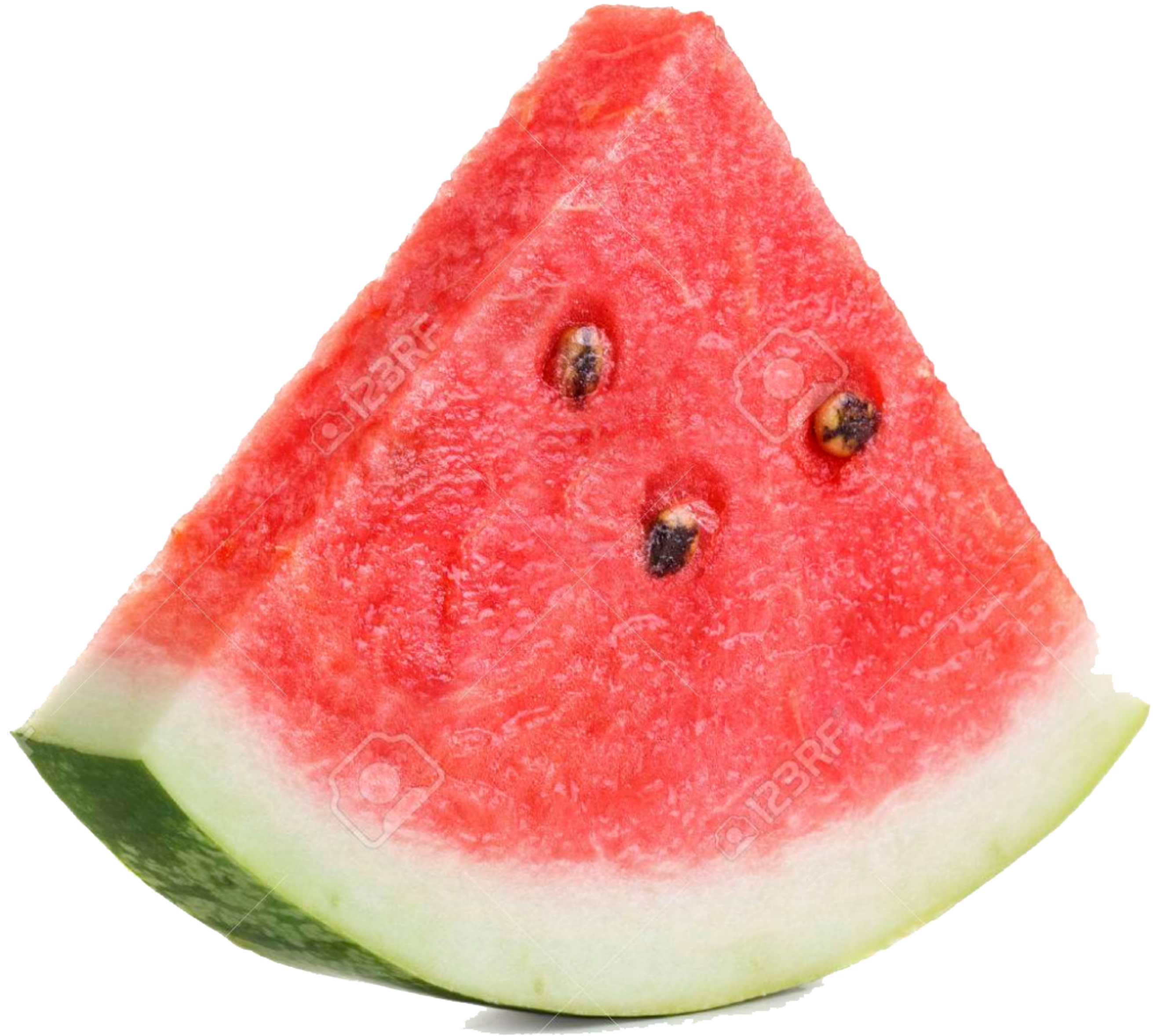
We all smile when we see one.

It has a lovable structure that wakes up the child inside:
it's not the optimal home but for sure it is the cutest.

A-frame is an eye-candy, bringing endless joy to it's
residents - so it's definitely a good shape when it comes
to partying and having fun time with friends.













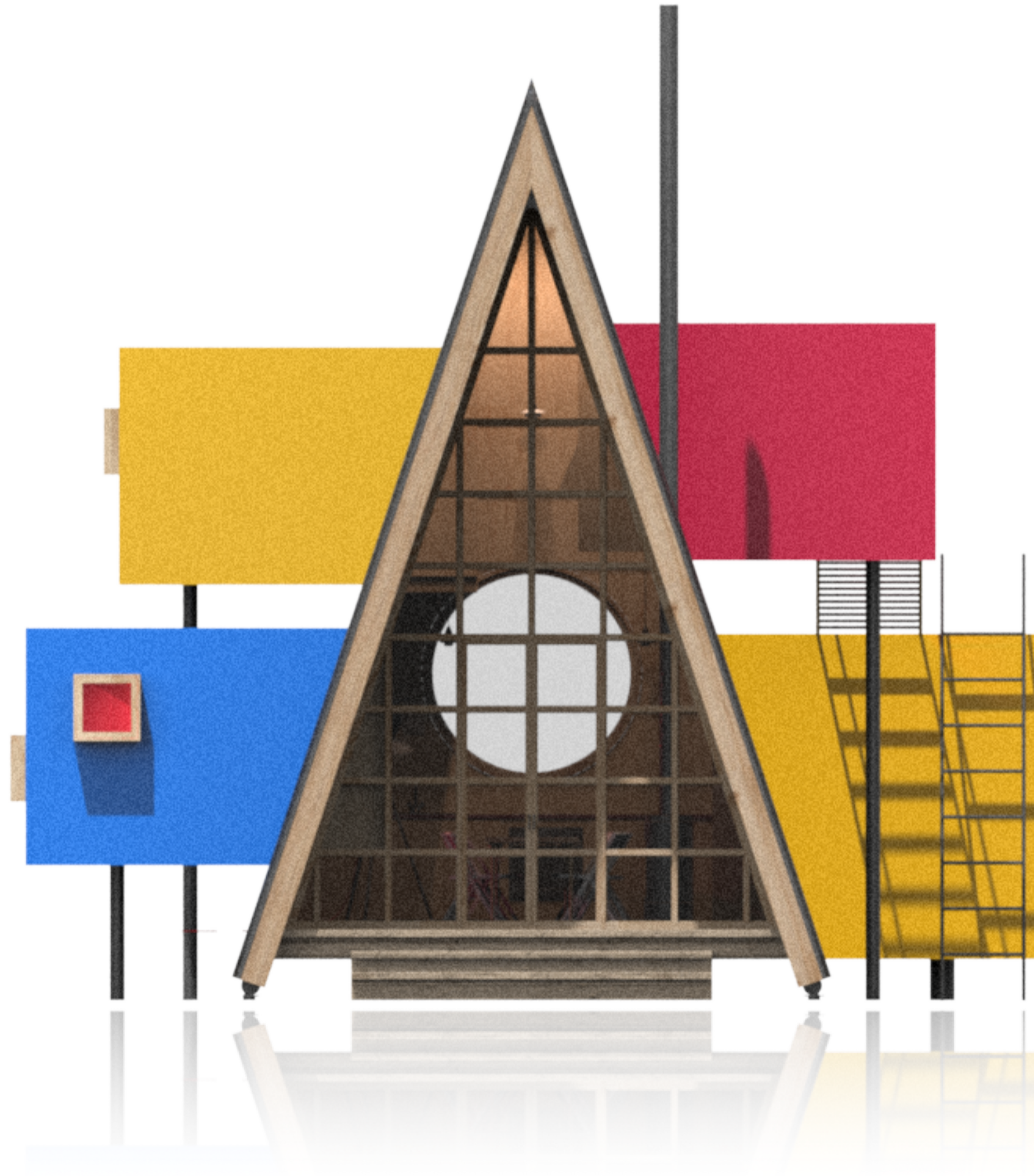


ONE HOUSE TO FIT THEM ALL

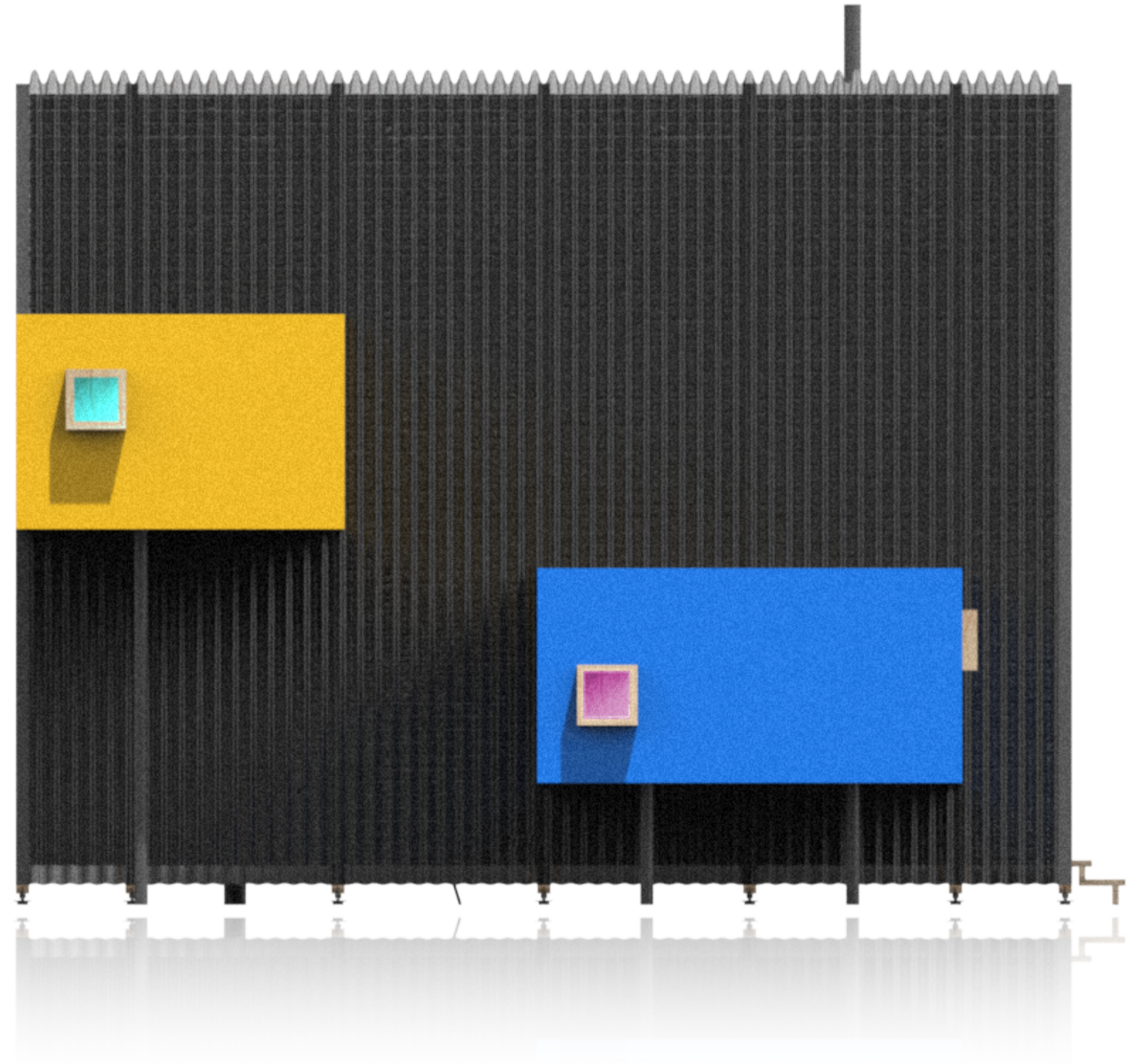
The simple insulated lightweight structure and the modularity of the construction means that the same system can work in a series of different sizes, shrunk by taking away a few A-frames, or expanded by adding more A-frames and sleeping capsules.

The following is the largest arrangement, comfortable for a large group of friends, regardless of the activities they have planned.

Front



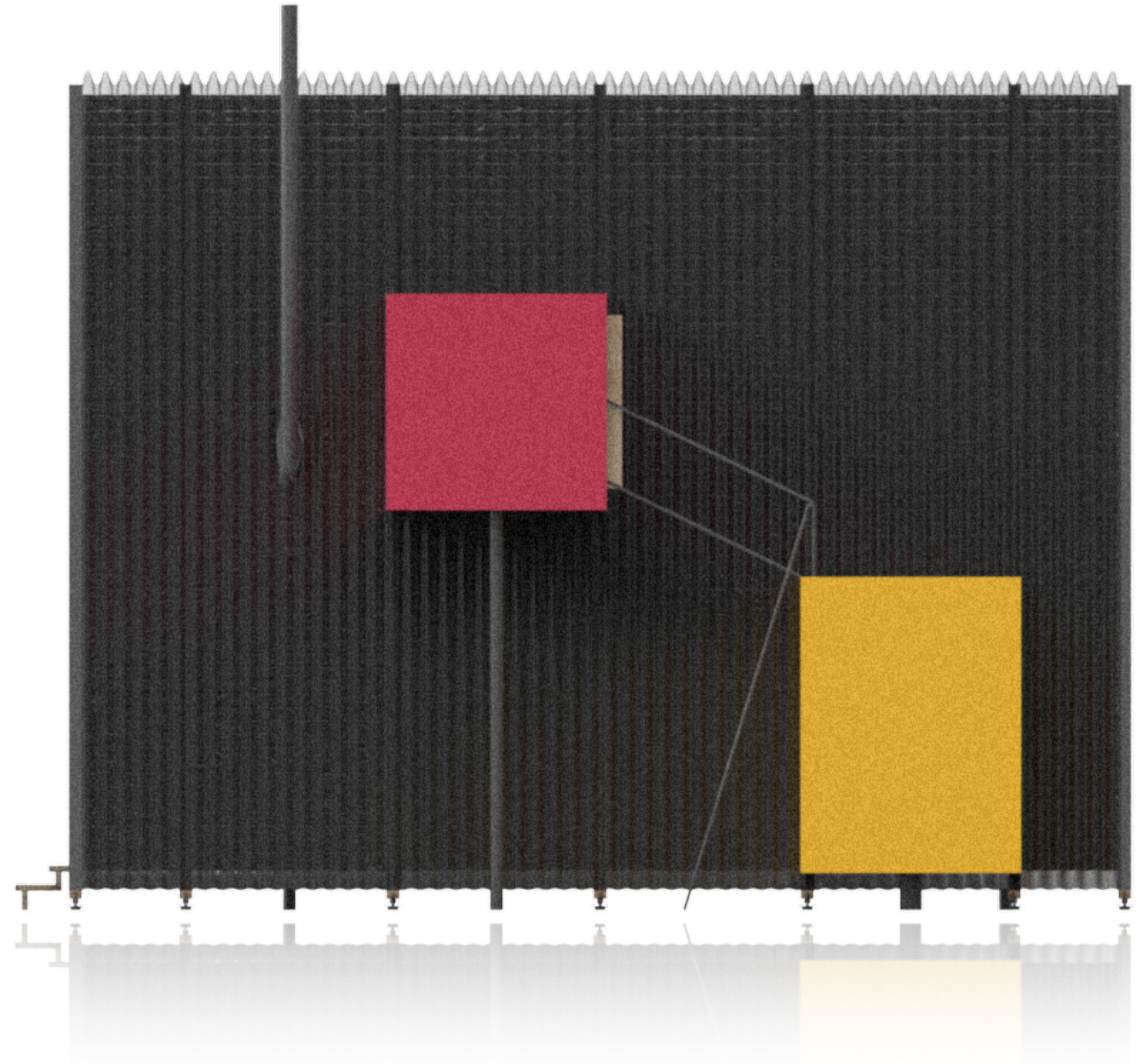
Side A



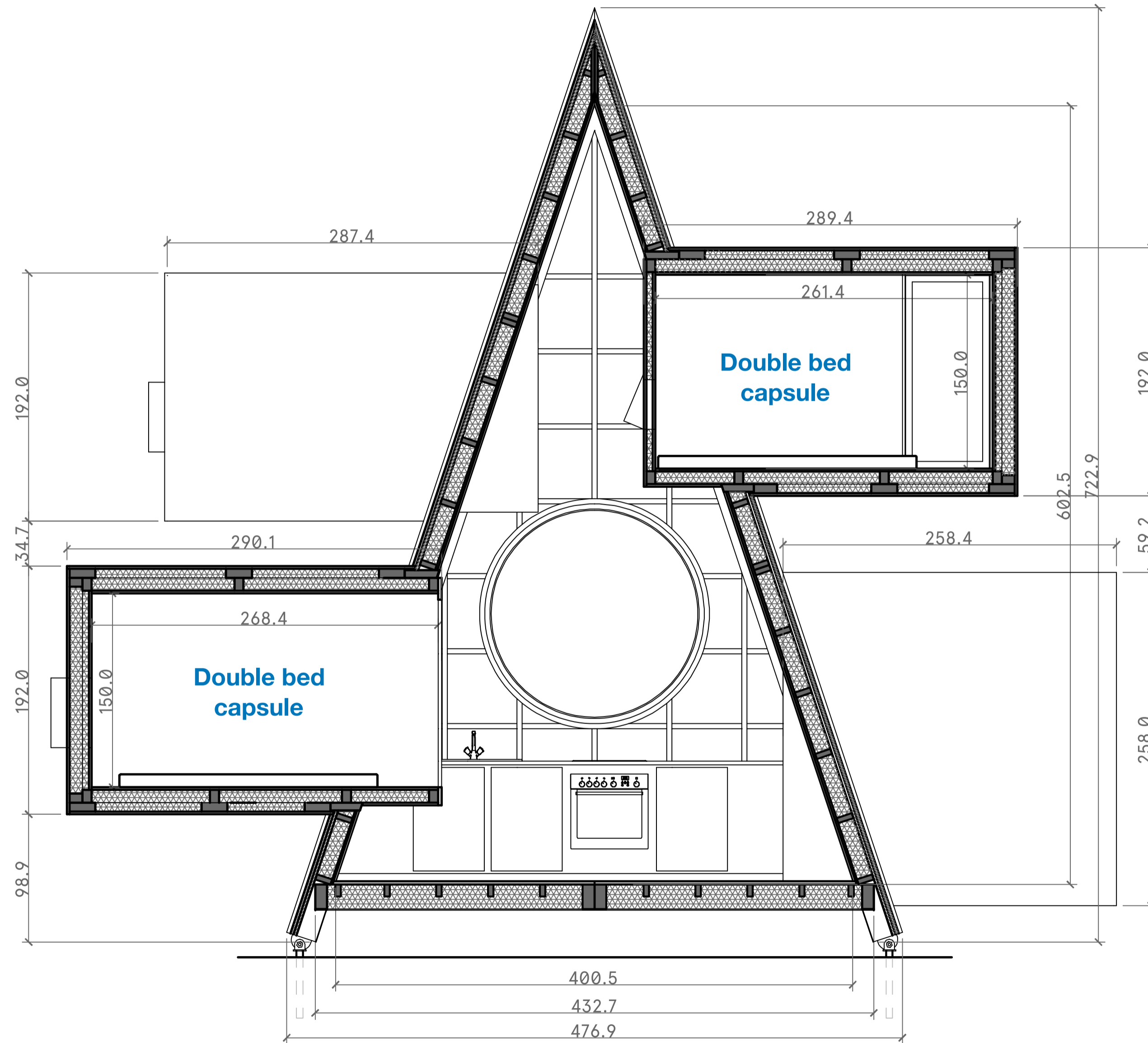
Back



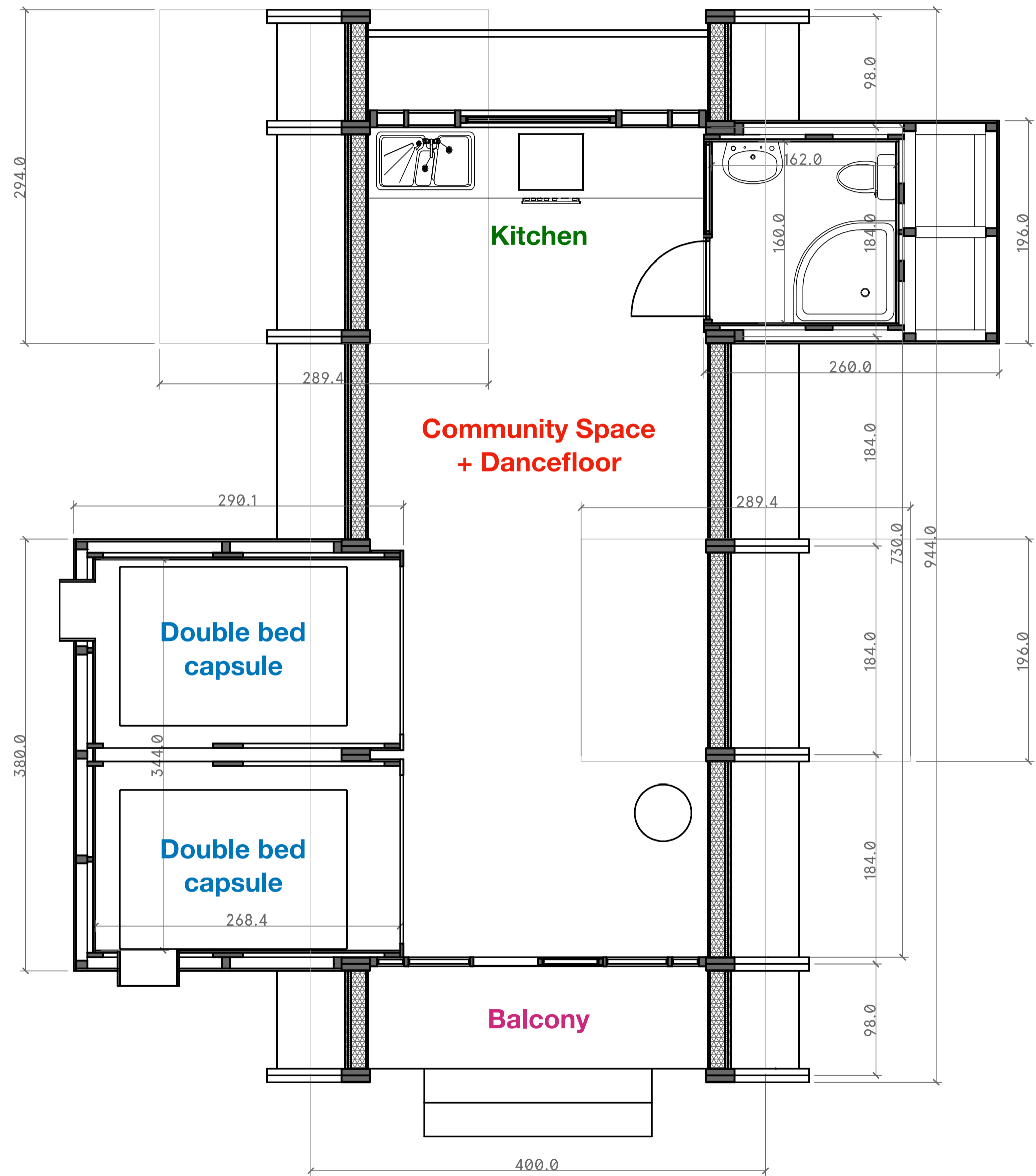
Side B



Section



 Floorplan



Kitchen

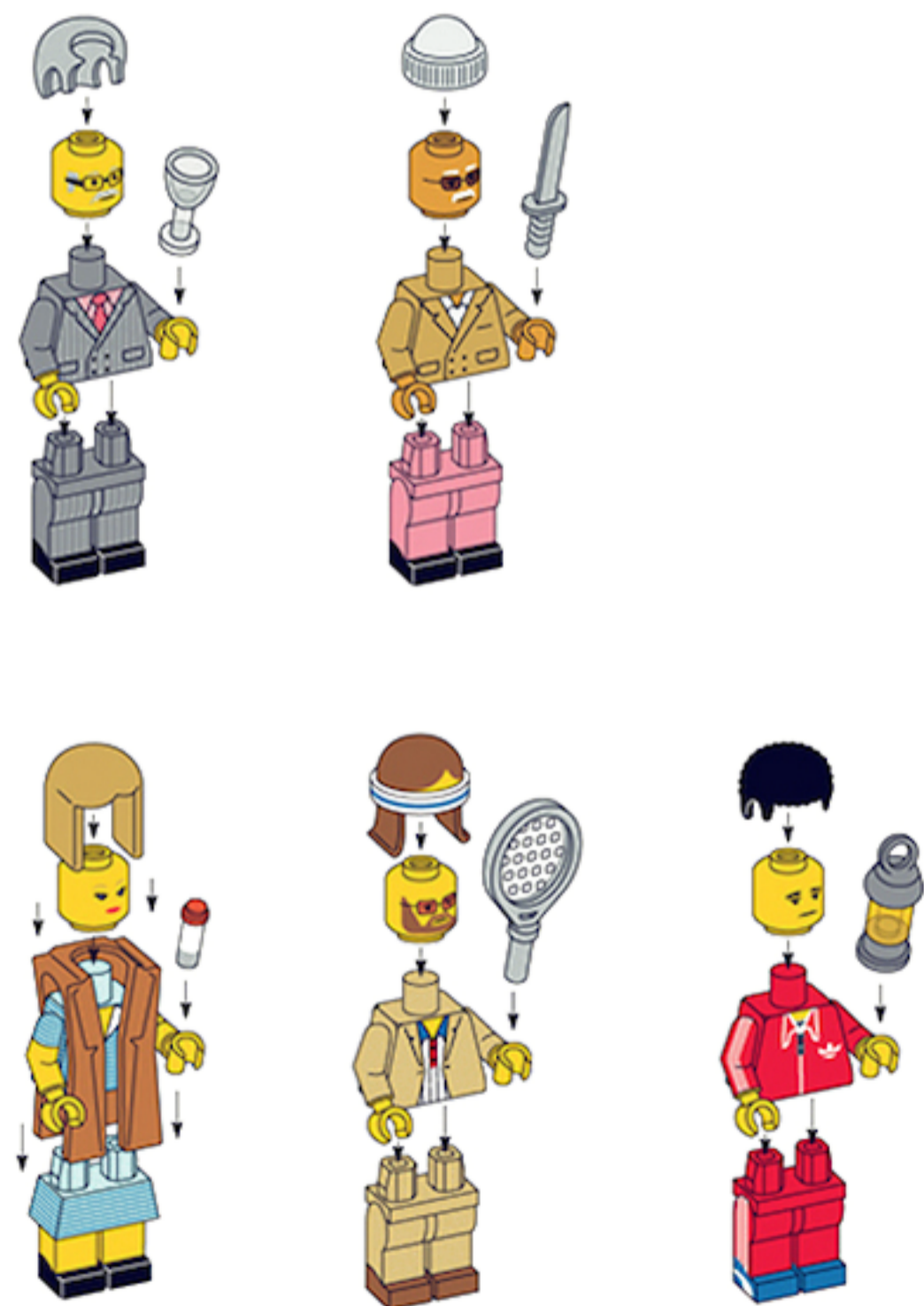
Bathroom

Community Space
+ Dancefloor

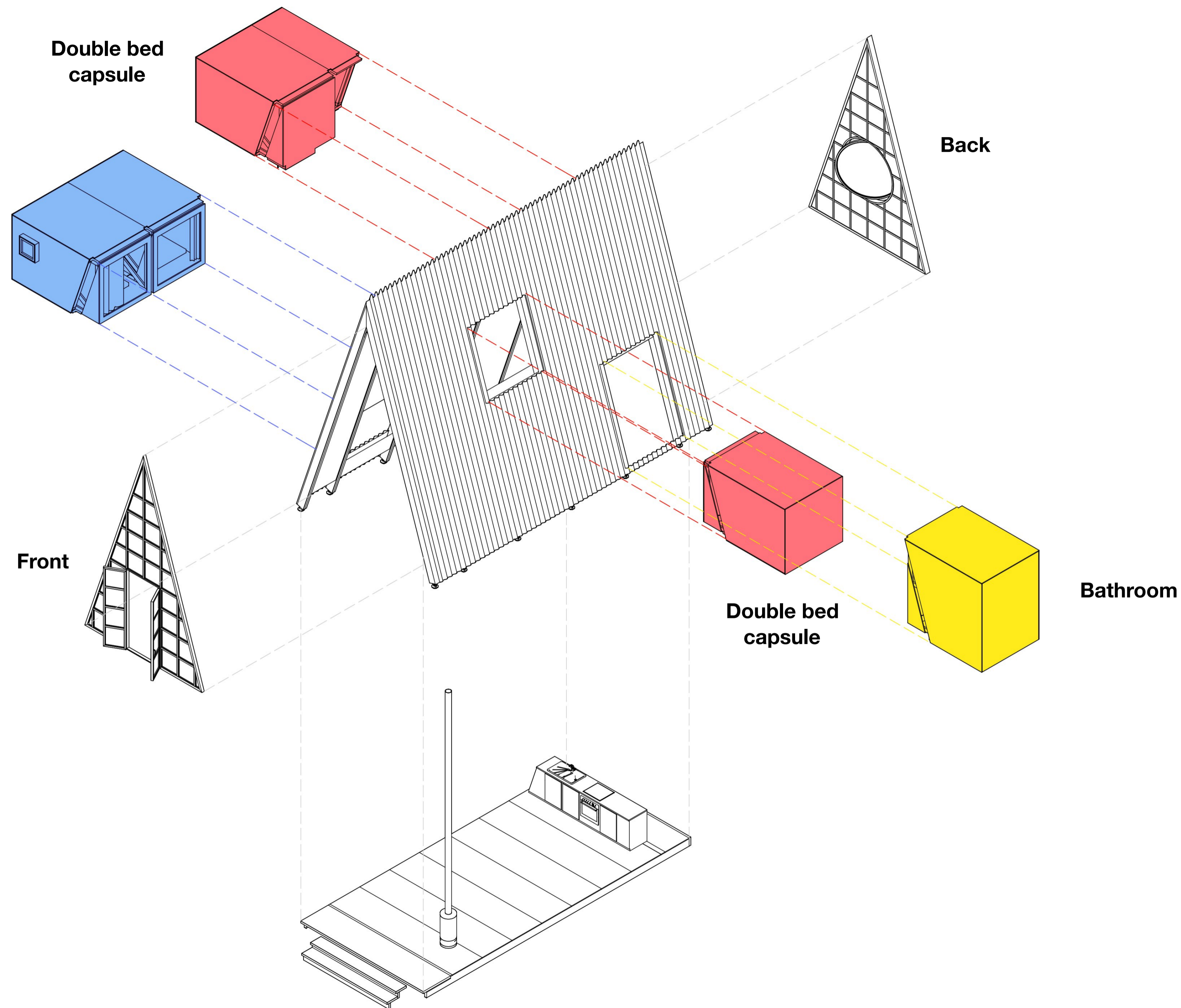
Double bed
capsule

Double bed
capsule

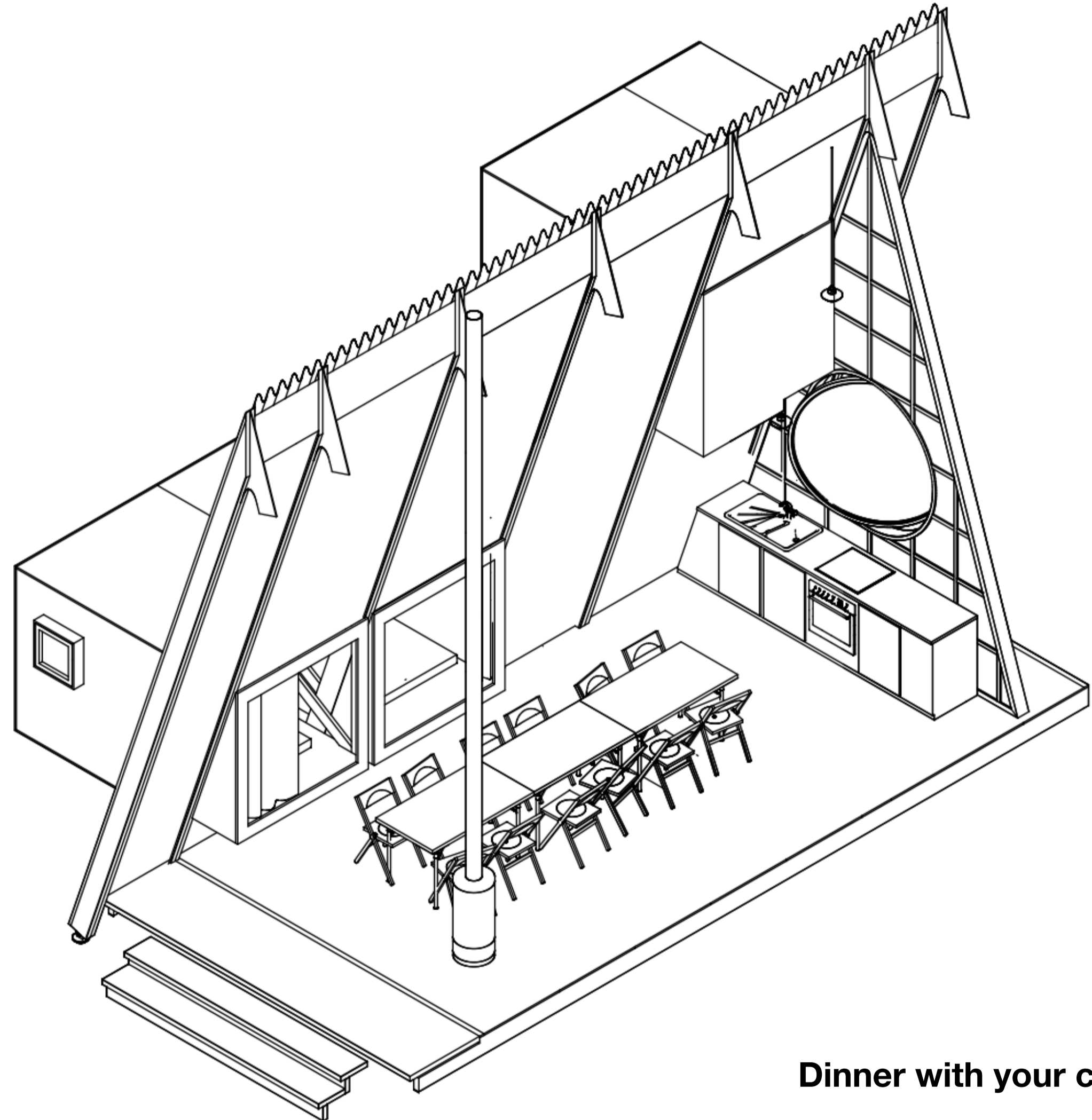
Balcony



**Double double
bed capsule**



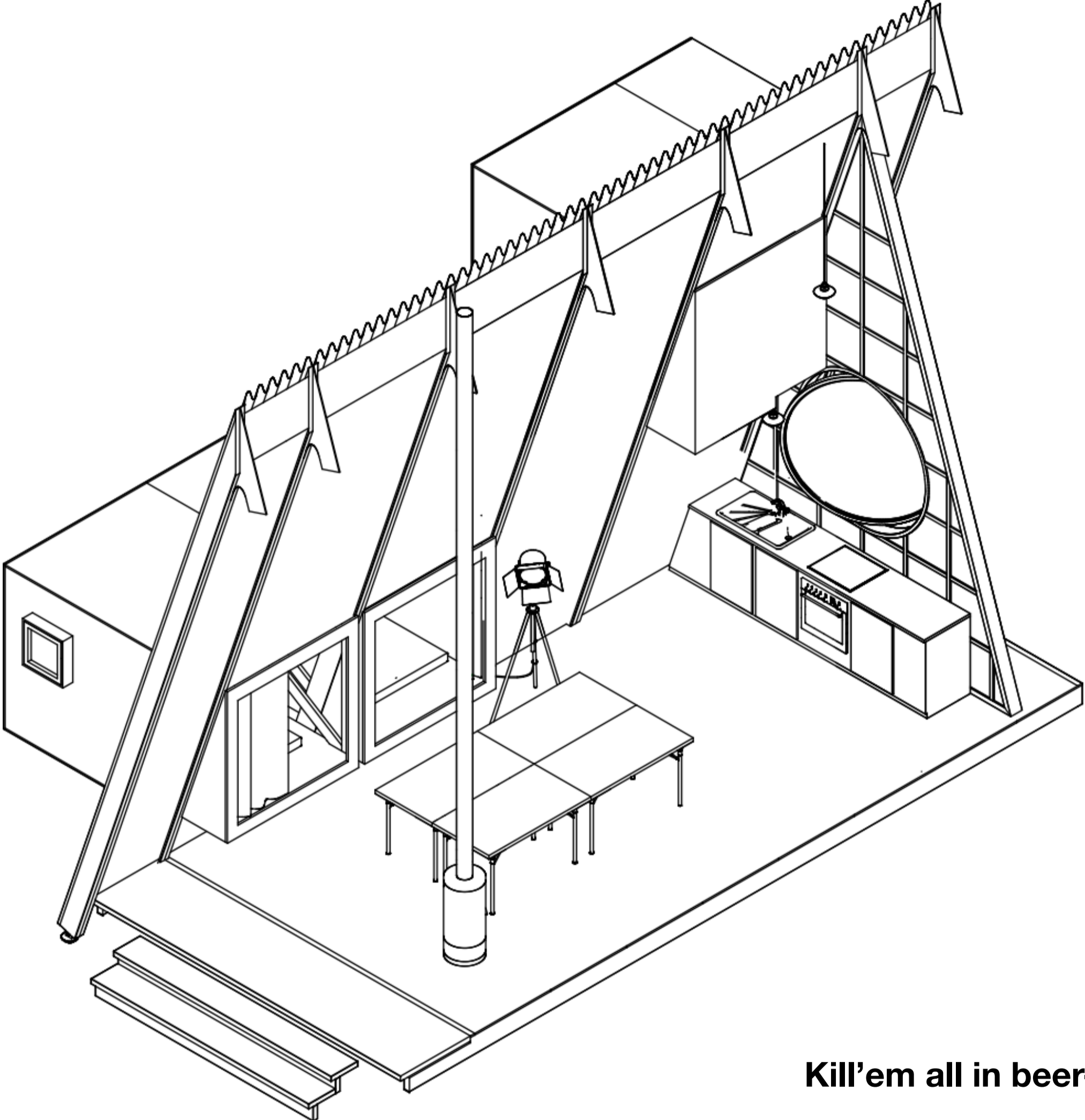
01



Dinner with your cool friends.



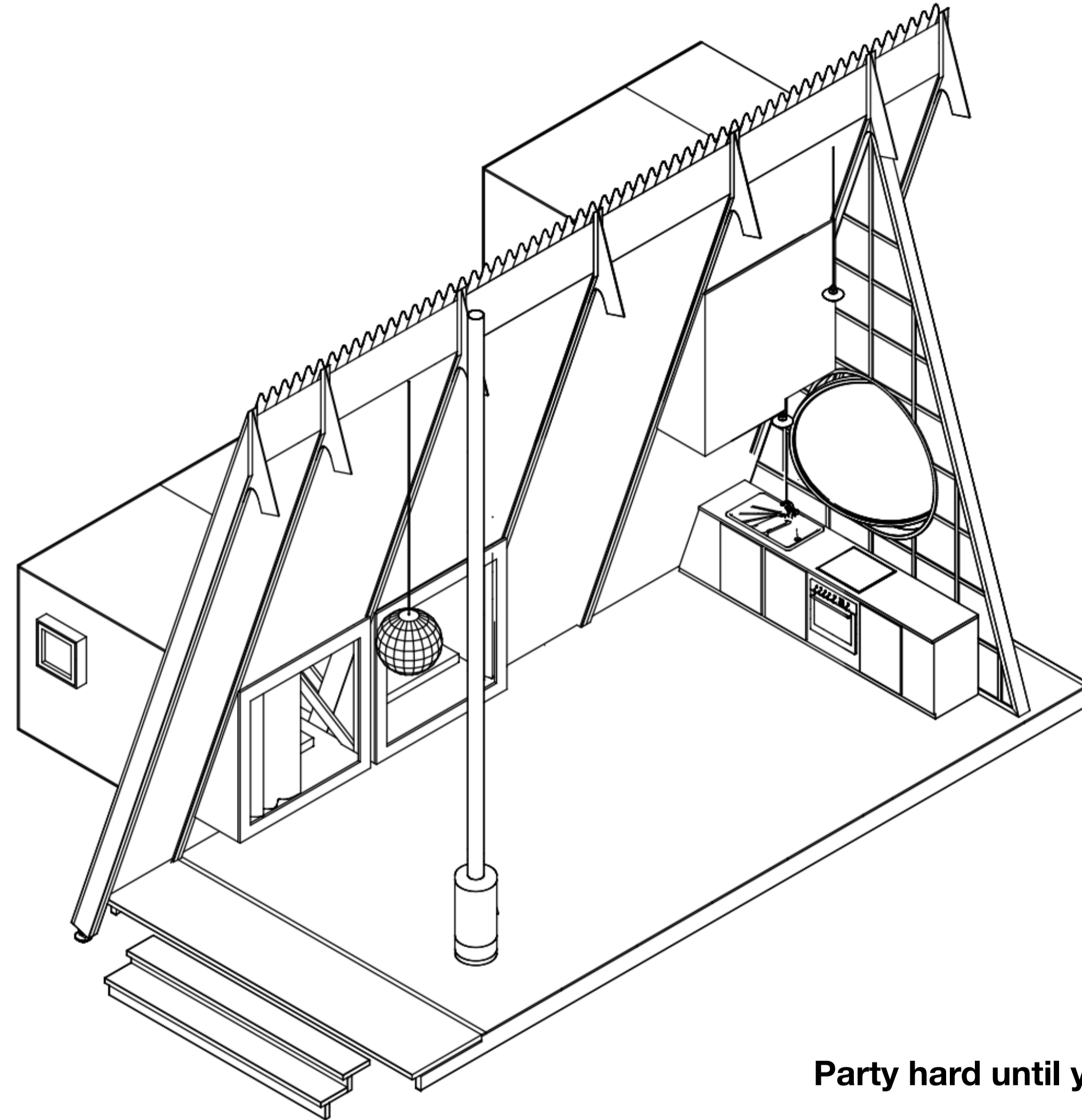
02



Kill'em all in beer-pong.



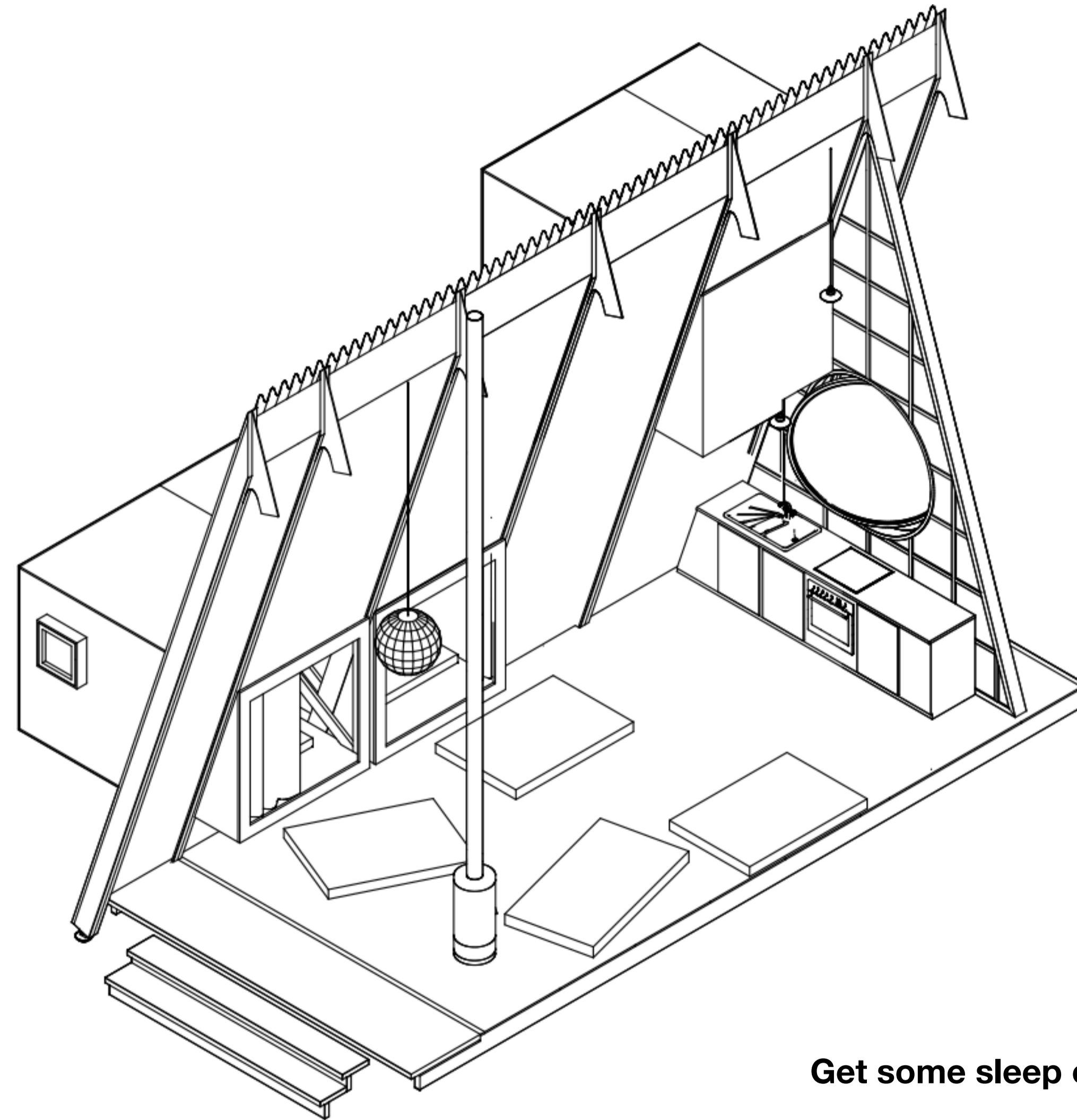
03



Party hard until you drop.



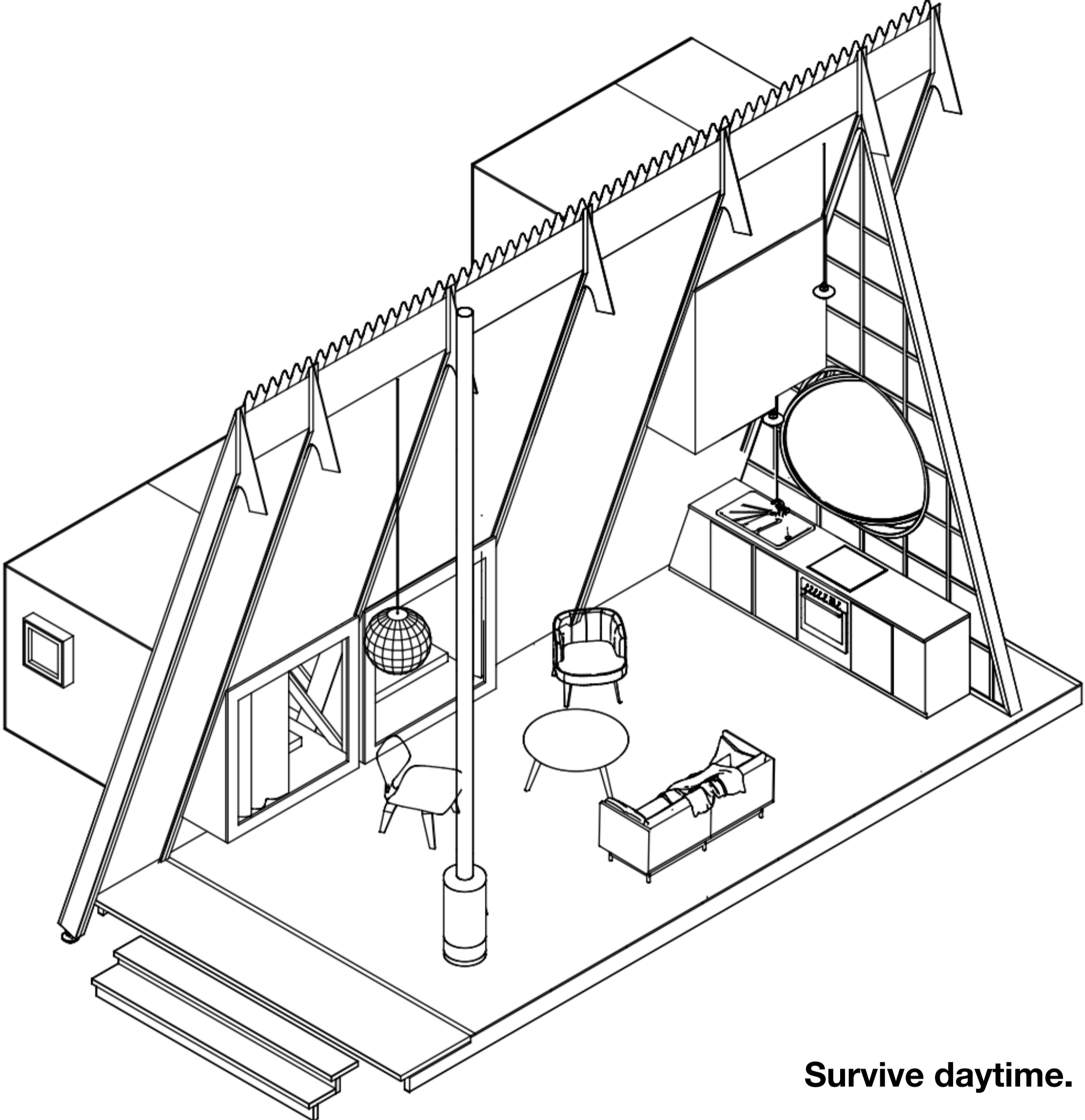
04



Get some sleep or else.



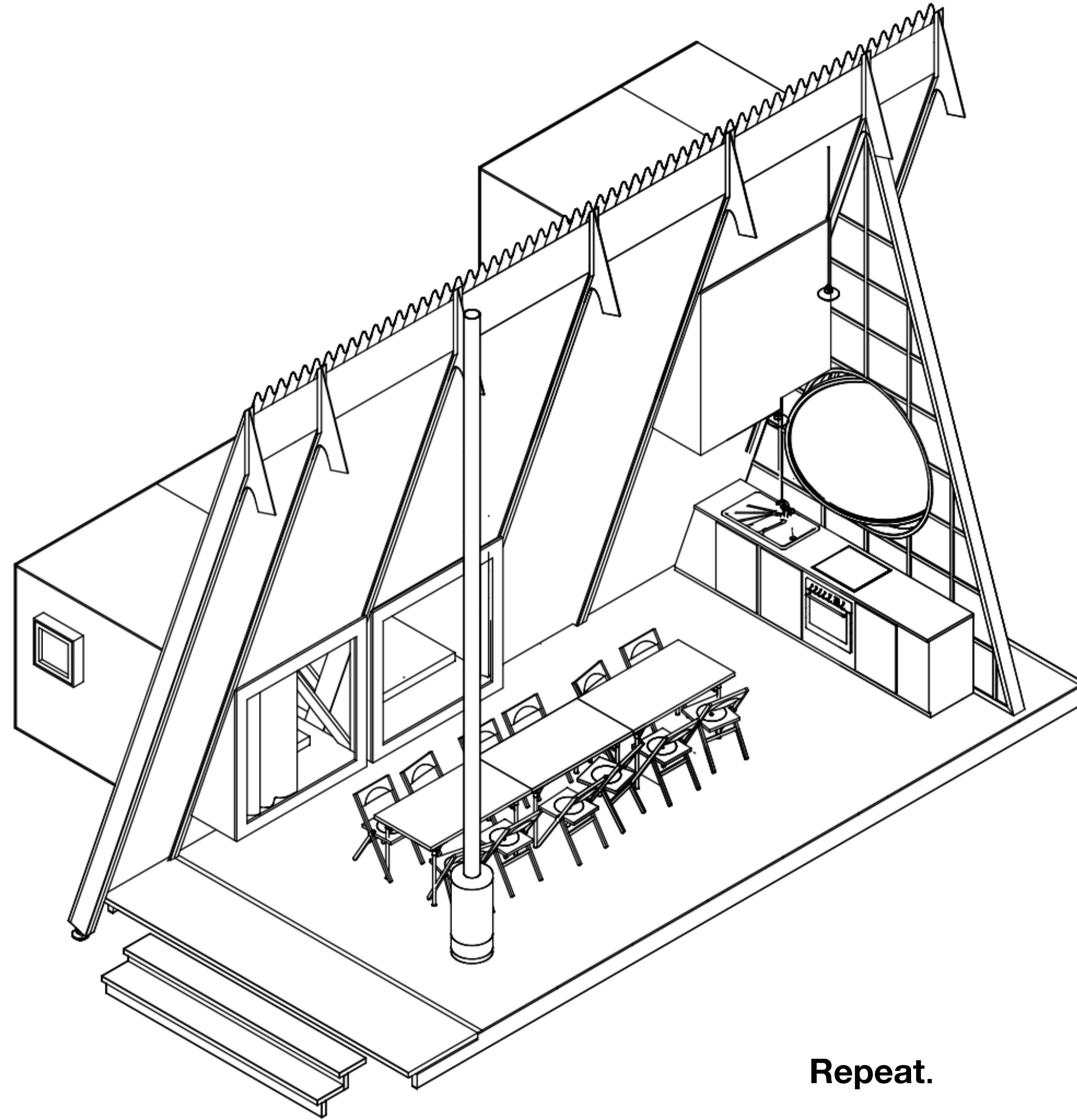
05



Survive daytime.



06



Repeat.









