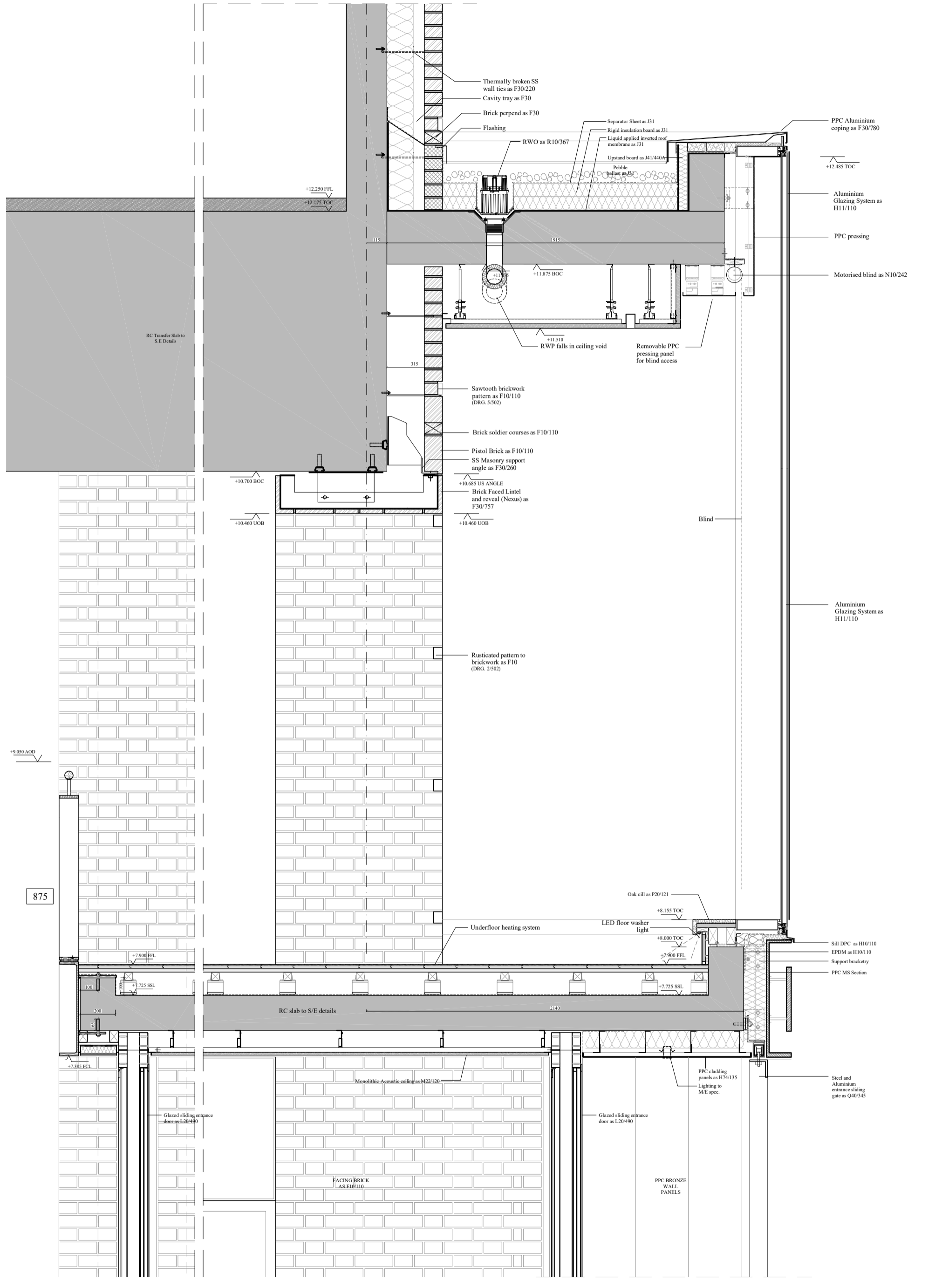


1



875

| | | | | | | | |
|---|--|--|---|--|---|--|---|
| REVISIONS: A Revised for single leaf brick and 250mm cavity. 28.03.17 B Floor slab updated to 225mm. Specification notes updated. Entrance head detail updated. xx.03.17 C General Update. 07.07.17 D General Update. Tender. 01.09.17 E General Update. Tender. 22.09.17 F Tender. 29.01.18 G Construction. 20.04.18 | H Construction. 06.07.18 • Position of RWP updated to ceiling void. • Blind detail updated to omit removable cladding element • Curtain walling caps replace with silicone joints as H10/110 spec. • G-value update to 0.18 | I Construction. 12.07.18 • PPC aluminium sill substituted for oak as P20/121 | K Construction. 17.05.19 • Updated in coordination with subcontractor drawings. • Blind detail updated • First floor ceiling detail updated | NOTES: Site size all dimensions. Spec. H11/110 Glazing Spec: LT 26% g: 0.18 43 dBA Perforated blind 30% light transmission. | LAMBETH PALACE LIBRARY & ARCHIVE | SCALE 1:10 @ A1 | WRIGHT & WRIGHT ARCHITECTS 89/91 Bayham Street London NW1 0MG TEL 020 7428 9393 FAX 020 7428 9394 www.wrightandwright.co.uk |
| | | | | | ENTRANCE PORTAL DETAIL | DATE: 19.12.2017 DRAWING NO: 508K | |