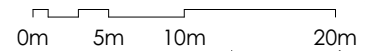
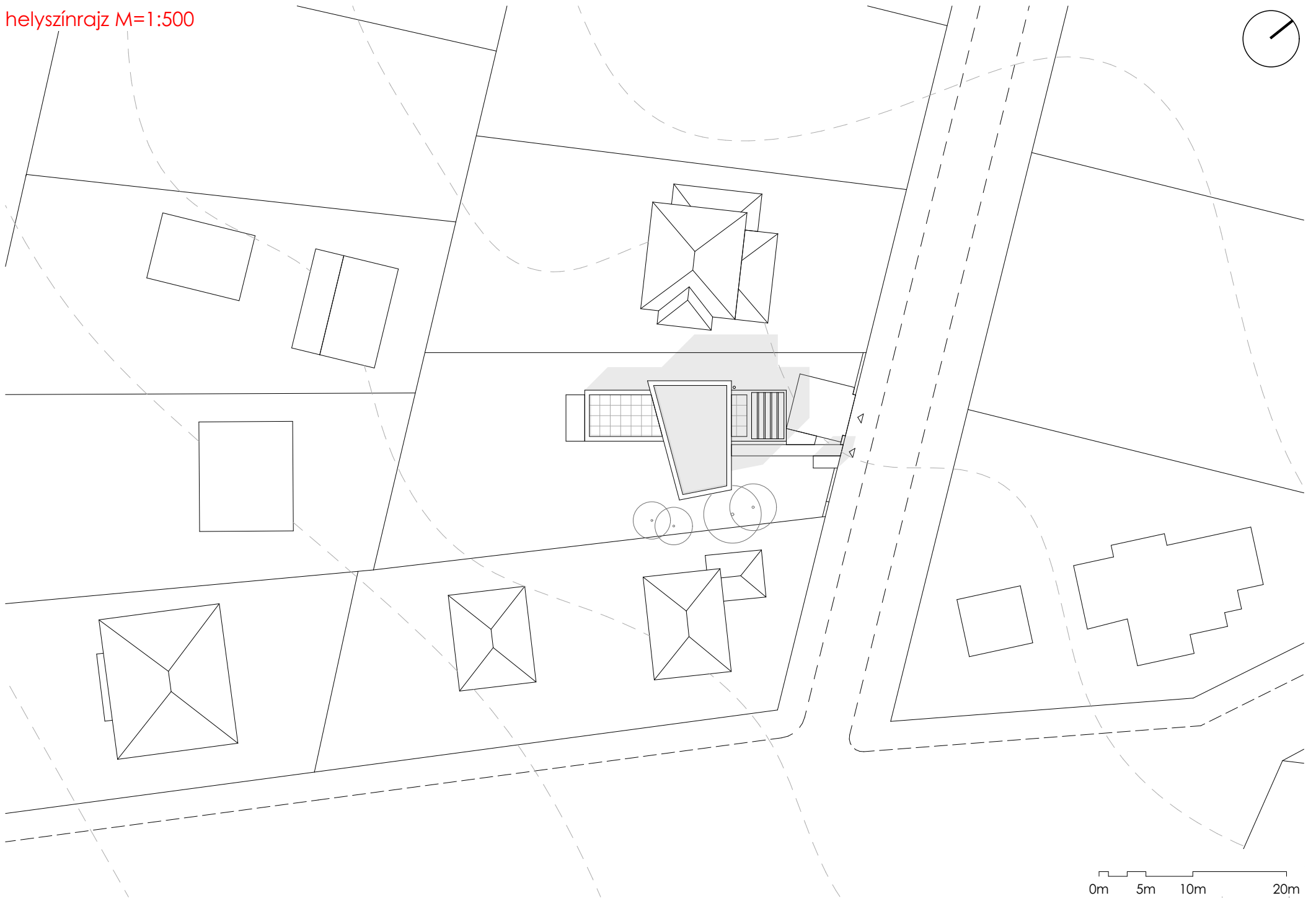
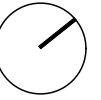
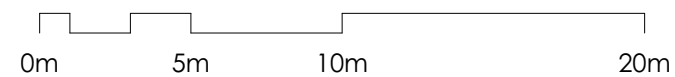
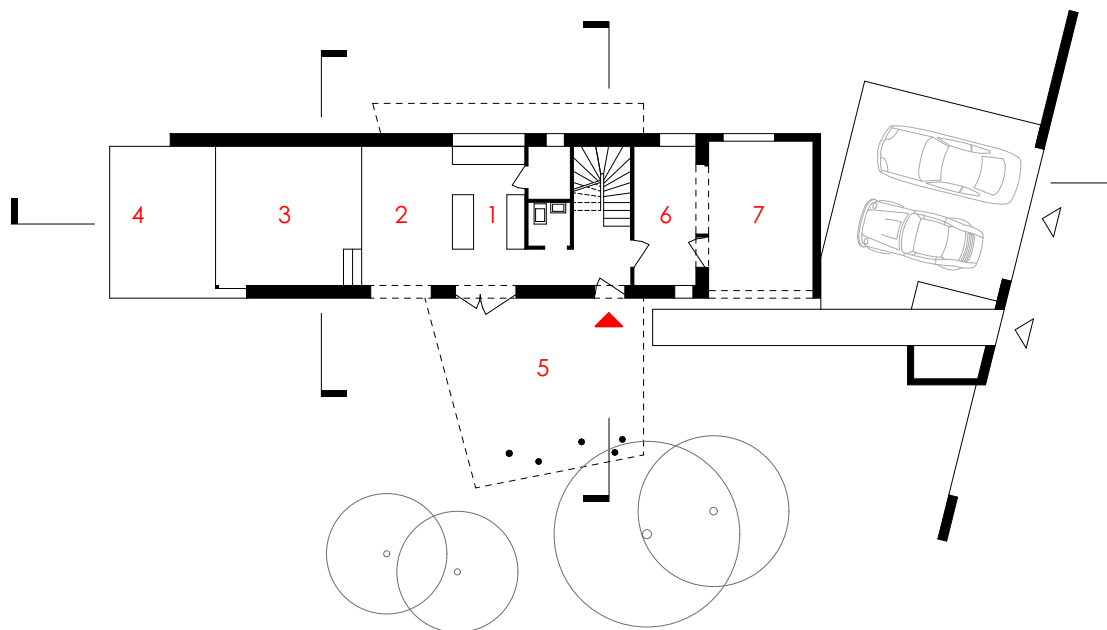
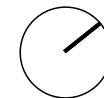


helyszínrajz M=1:500



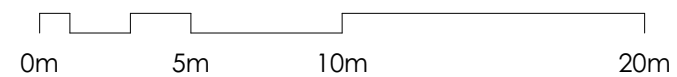
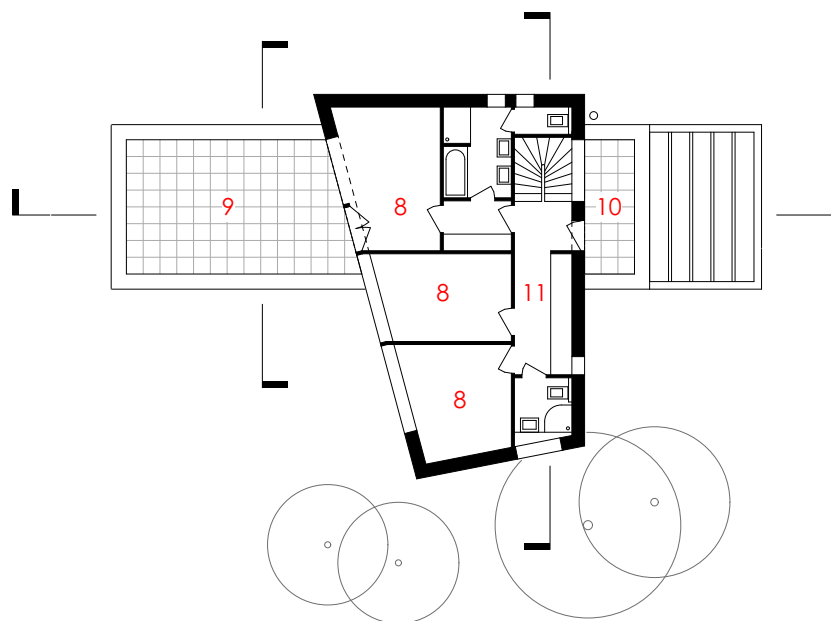
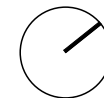
földszinti alaprajz M=1:250

- 1 konyha
- 2 étkező
- 3 nappali
- 4 terasz
- 5 fedett terasz
- 6 háztartási helyiség
- 7 terasz

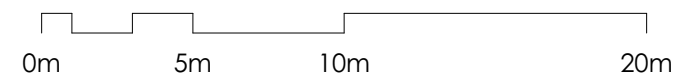
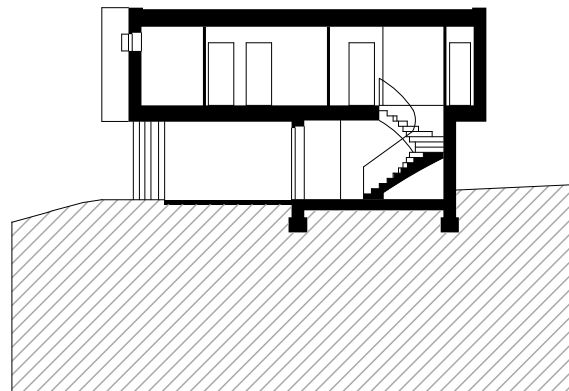


emeleti alaprajz M=1:250

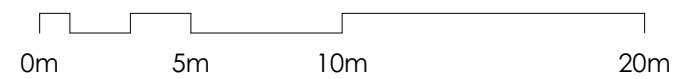
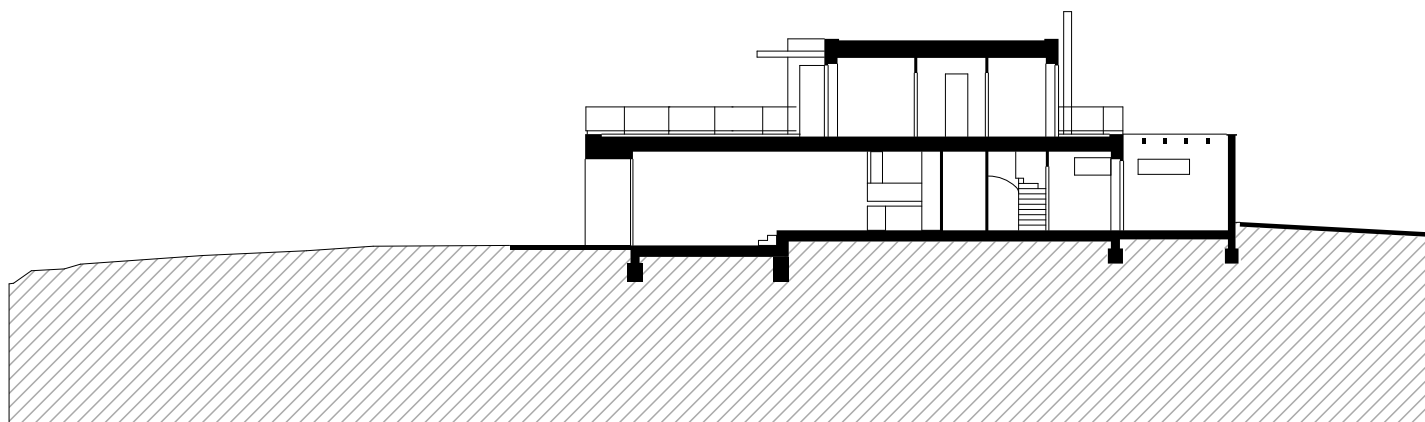
- 8 szoba
- 9 terasz
- 10 terasz
- 11 gardrób



A-A metszet M=1:250



B-B metszet M=1:250



C-C metszet M=1:250

