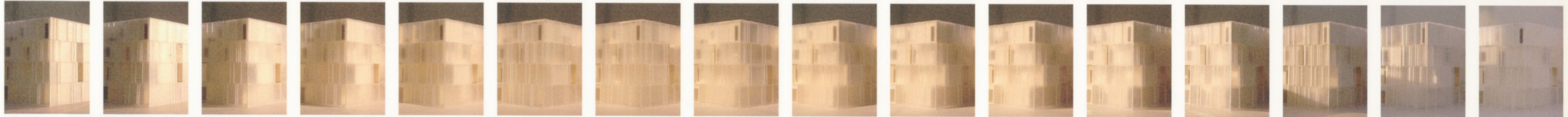
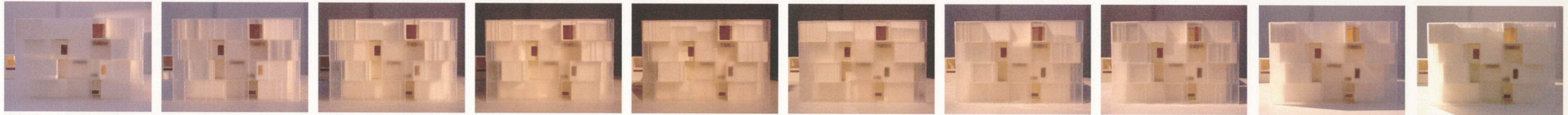


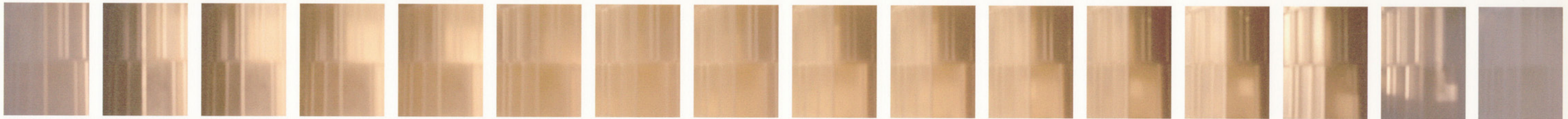
A STUDY OF THE TRANLUCENT AND THE TRANSPARENT FACADE AND OF THE TRANSPARENT "HOLES" AND THEIR DRAWING OF LIGHT ON THE "CHAMBER". A STUDY OF SUNLIGHT AND SKY-LIGHT FROM EARLY MORNING TO THE EVENING. (THE 1. OF JULY)



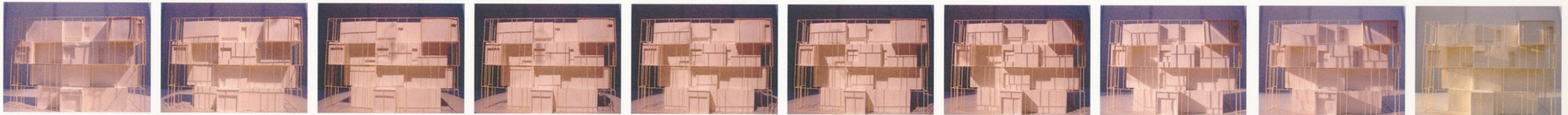
A STUDY OF THE TRANLUCENT AND THE TRANSPARENT FACADE AND OF THE WINDOW BARS AS LIGHT-"COLLECTORS". A STUDY OF SUNLIGHT AND SKY-LIGHT FROM EARLY MORNING TO THE EVENING. (THE 1. OF JULY)



A STUDY OF THE THREE-DIMENSIONAL LAYER IN THE TRANLUCENT AND THE TRANSPARENT FACADE. A STUDY OF THE IN-BETWEEN-SPACE. A STUDY OF SUNLIGHT AND SKY-LIGHT FROM EARLY MORNING TO THE EVENING. (THE 1. OF JULY)



A CLOSE STUDY OF A CORNER OF THE BUILDING. SUNLIGHT AND SKY-LIGHT FROM EARLY MORNING TO THE EVENING. (THE 1. OF JULY)



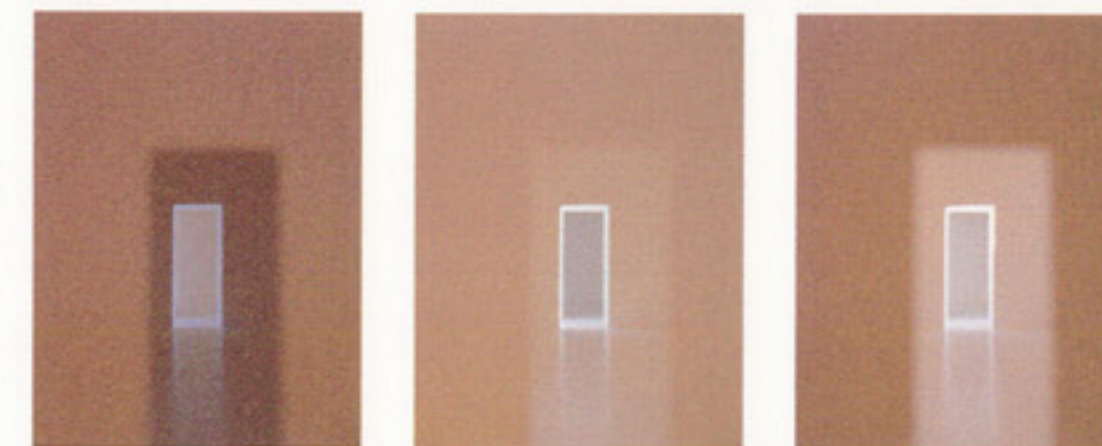
A STUDY OF THE WINDOW BARS AND THEIR SHADOW-DRAWINGS ON THE "CHAMBER". A STUDY OF SUNLIGHT AND SKY-LIGHT FROM EARLY MORNING TO THE EVENING. (THE 1. OF JULY)



A CLOSE STUDY OF THE WINDOW BARS AND THEIR INFLUENCE ON THE SPACE IN-BETWEEN AND THEIR SHADOW-DRAWINGS. A STUDY OF SUNLIGHT AND SKY-LIGHT FROM EARLY MORNING TO THE EVENING. (THE 1. OF JULY)



A STUDY OF THE PERSPECTIVE VIEW, THE COLOUR OF THE LIGHT, THE STATE OF THE LIGHT. A STUDY WITH ONLY SKY LIGHT.



A STUDY OF THE PERSPECTIVE VIEW SEEN FROM ONE ROOM, THE COLOUR OF THE LIGHT, A SELECTION OF 3 TIMES OF A DAY (THE 1. OF JULY)



A STUDY OF THE PERSPECTIVE VIEW SEEN FROM ONE ROOM, THE COLOUR OF THE LIGHT, A SELECTION OF 3 TIMES OF A DAY (THE 1. OF JULY)