



ENTRANCE ALONG PRISTANISKA STREET

THE EXTROVERTED MUSEUM

The central typology of the historic city of Maribor is the courtyard block, an inward facing plan that encloses a privately shared garden at its center. This introverted organization both protects its inner contents and establishes a solid and impervious facade, disconnecting the inner world from the street outside - a classic fortress model for a city built as a military bastion.

Our proposal for the new Maribor Art Gallery - situated just outside of the historic walls at the intersection of the new and old cities - inverts this protective model in order to engage the surrounding city and environment. The facade of the museum pulls people, activities and views in and out of both the gallery and public programs.

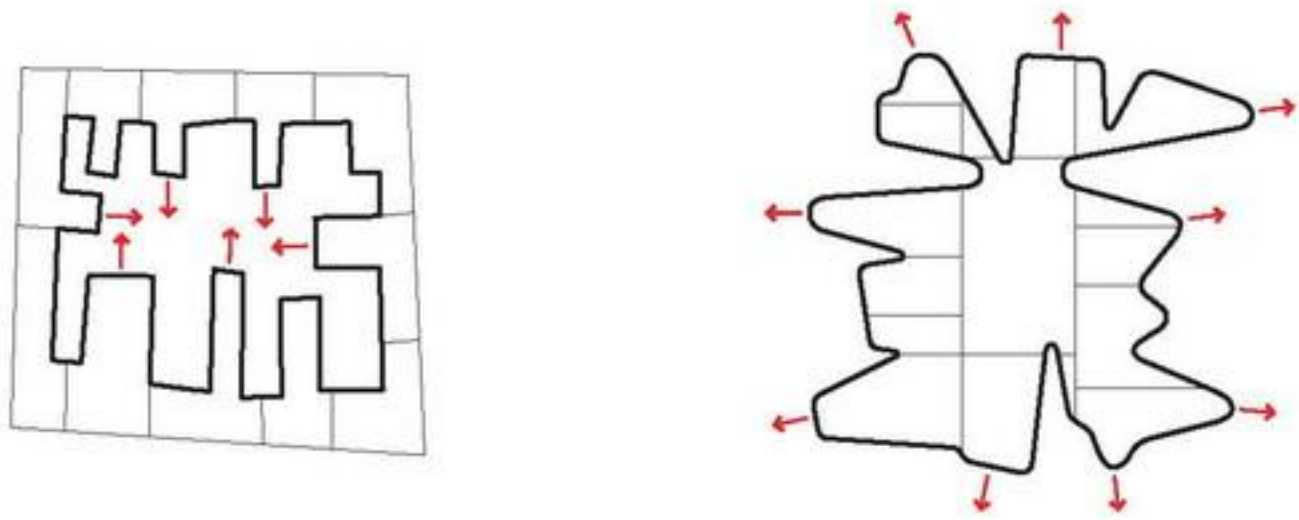
The new UGM will be a hub of activity and culture where the making, learning and exhibiting of art is engaged with the very city that surrounds it.

PRODUCE TO EXHIBIT TO PRODUCE

The inclusion of programs such as the Creative Industry Center, Children's House of Experiments, Library and Architectural Center allow the new UGM to perform as much more than a typical museum. These programs give a dimension to the UGM not commonly found modern galleries: the ability to engage in the production of knowledge and material that ultimately influences, curates and directly provides for the exhibition of art, which in turn feeds back into the learning and making of cultural content.

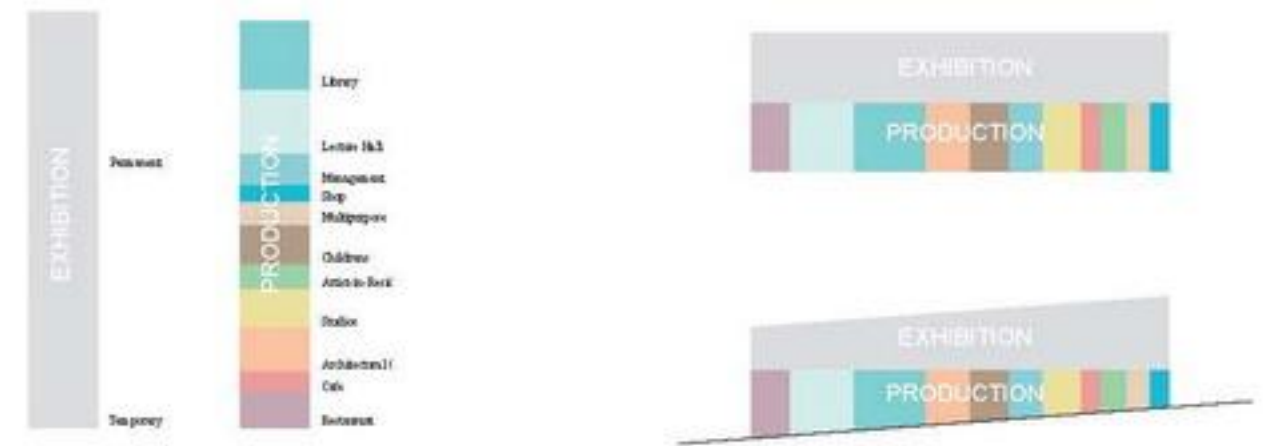
In fact the Exhibition and Production programs of the new UGM share nearly equal billing in terms of square footage and can be organized on two floors across the site. By placing the Productive programs at ground level and the Exhibition above, the UGM can directly engage the city as with its multitude of public resources without sacrificing the stringent performative requirements of the Exhibition spaces.

Sloping the UGM with the natural grade of the site accommodates the full range of differently scaled programs, from the cafe and the lecture hall below to the photo and sculptural galleries above.

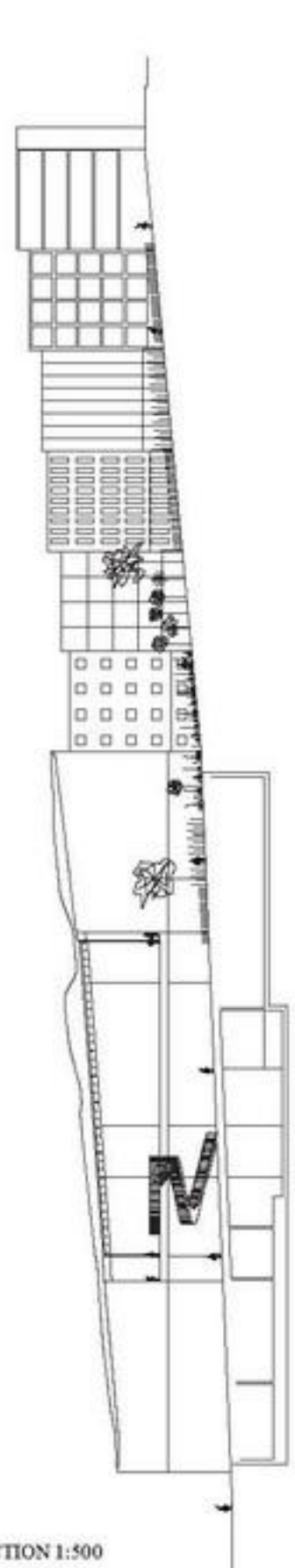


INTROVERTED CITY

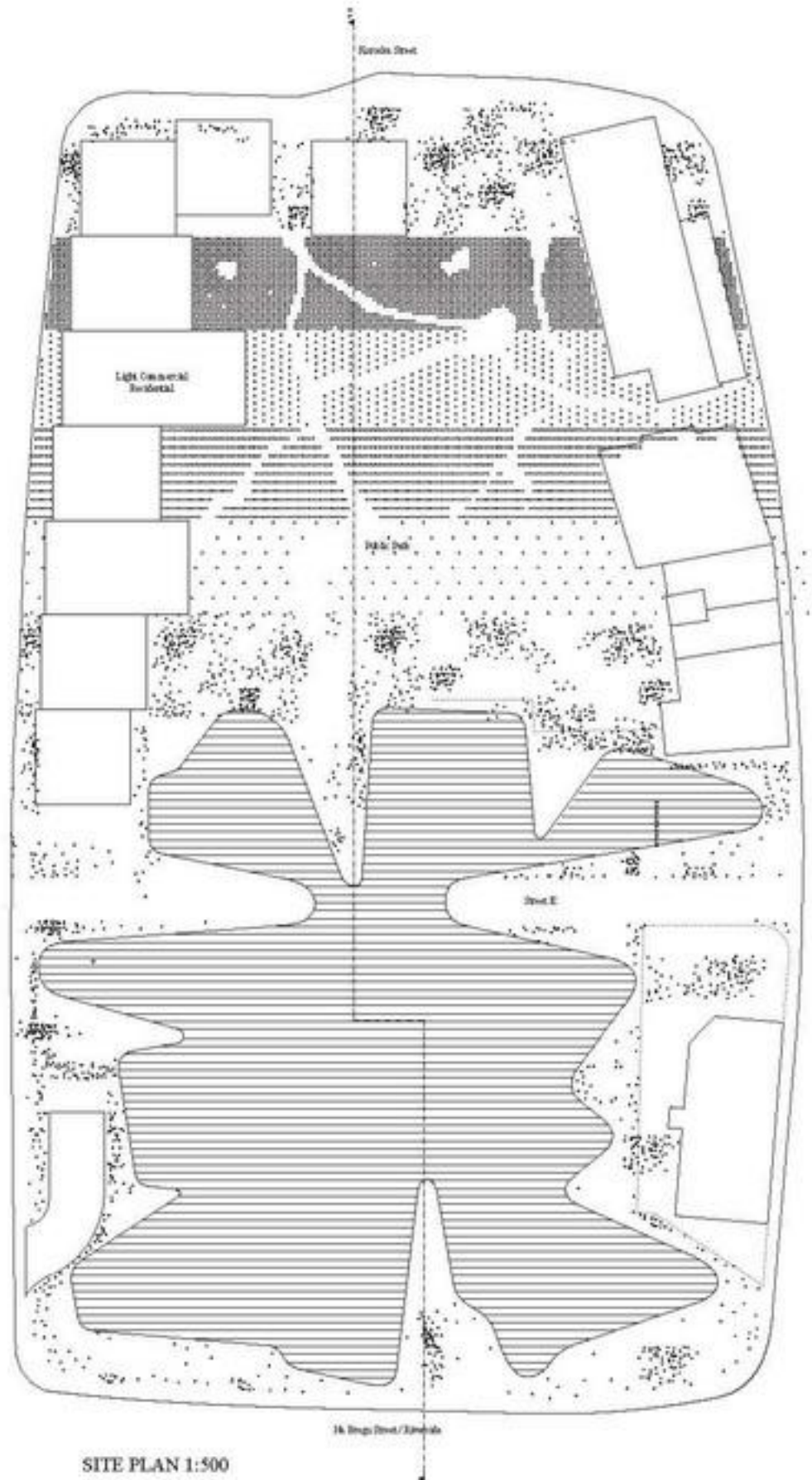
EXTROVERTED MUSEUM



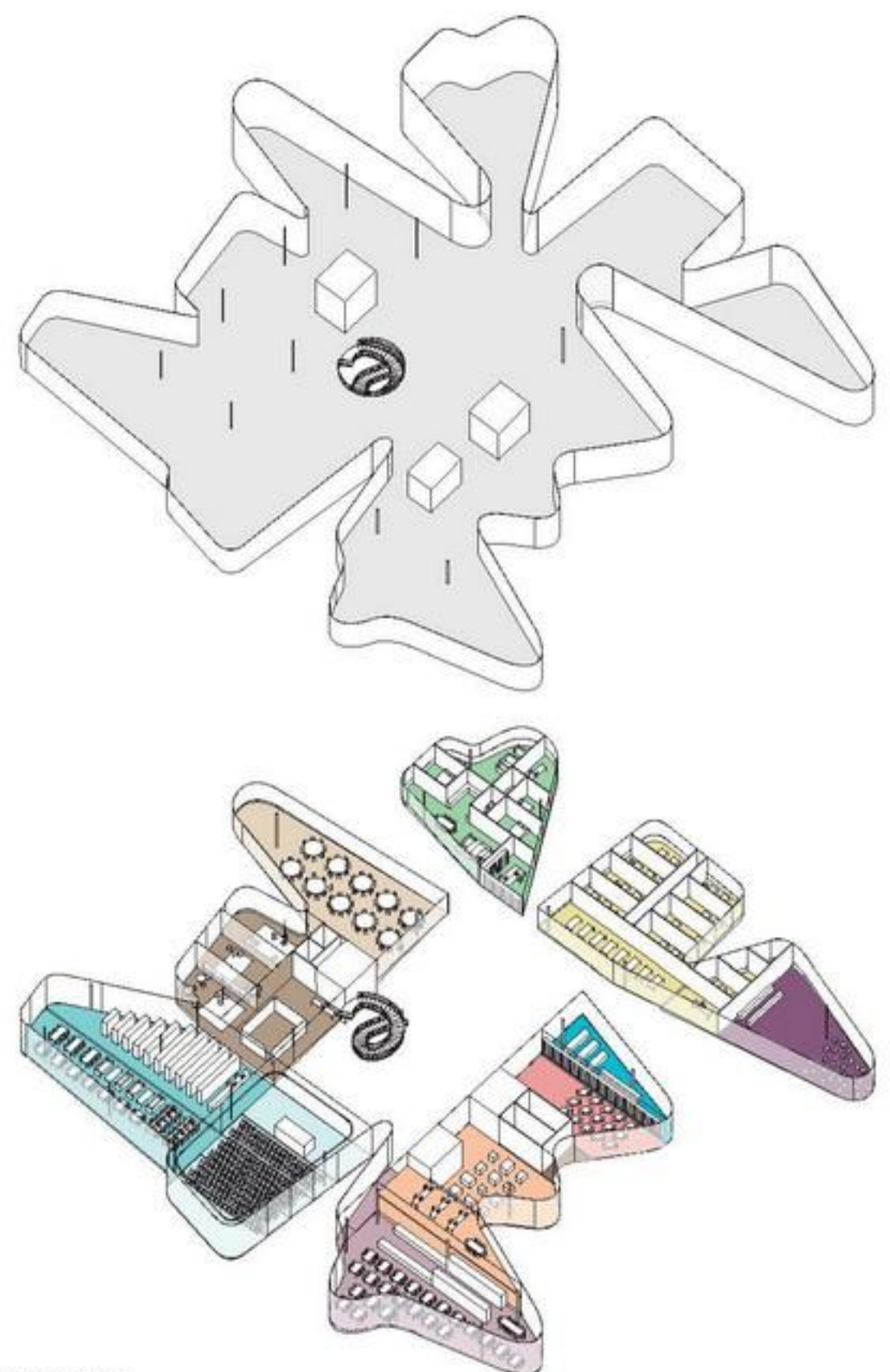
PROGRAM ORGANIZATION



SITE SECTION 1:500



SITE PLAN 1:500



PROGRAM AXON