



**realities:united**

Selected Works 2001-2016

Version 20-05-2011

[www.realU.de](http://www.realU.de)



**realities:united**

BIX, Communicative Display Skin for the Kunsthhaus Graz, 2003

Permanent installation with 930 computer controlled circular fluorescent light tubes

Dimensions ~1000m<sup>2</sup>

Foto ©Paul Ott | Building ©Peter Cook & Colin Fournier | Artistic Content Displayed ©realities:united

Further images & video: <http://realu.de/#PROJECT,69,3>



**realities:united**

BIX, Communicative Display Skin for the Kunsthhaus Graz, 2003

Permanent installation with 930 computer controlled circular fluorescent light tubes

Dimensions ~1000m<sup>2</sup>

Foto ©Paul Ott | Building ©Peter Cook & Colin Fournier | Artistic Content Displayed ©realities:united

Further images & video: <http://realu.de/#PROJECT,69,3>



**realities:united**

BIX, Communicative Display Skin for the Kunsthhaus Graz, 2003

Permanent installation with 930 computer controlled circular fluorescent light tubes

Dimensions ~1000m<sup>2</sup>

Foto ©Morley von Sternberg | Building ©Peter Cook & Colin Fournier | Artistic Content Displayed ©realities:united

Further images & video: <http://realu.de/#PROJECT,69,3>



## realities:united

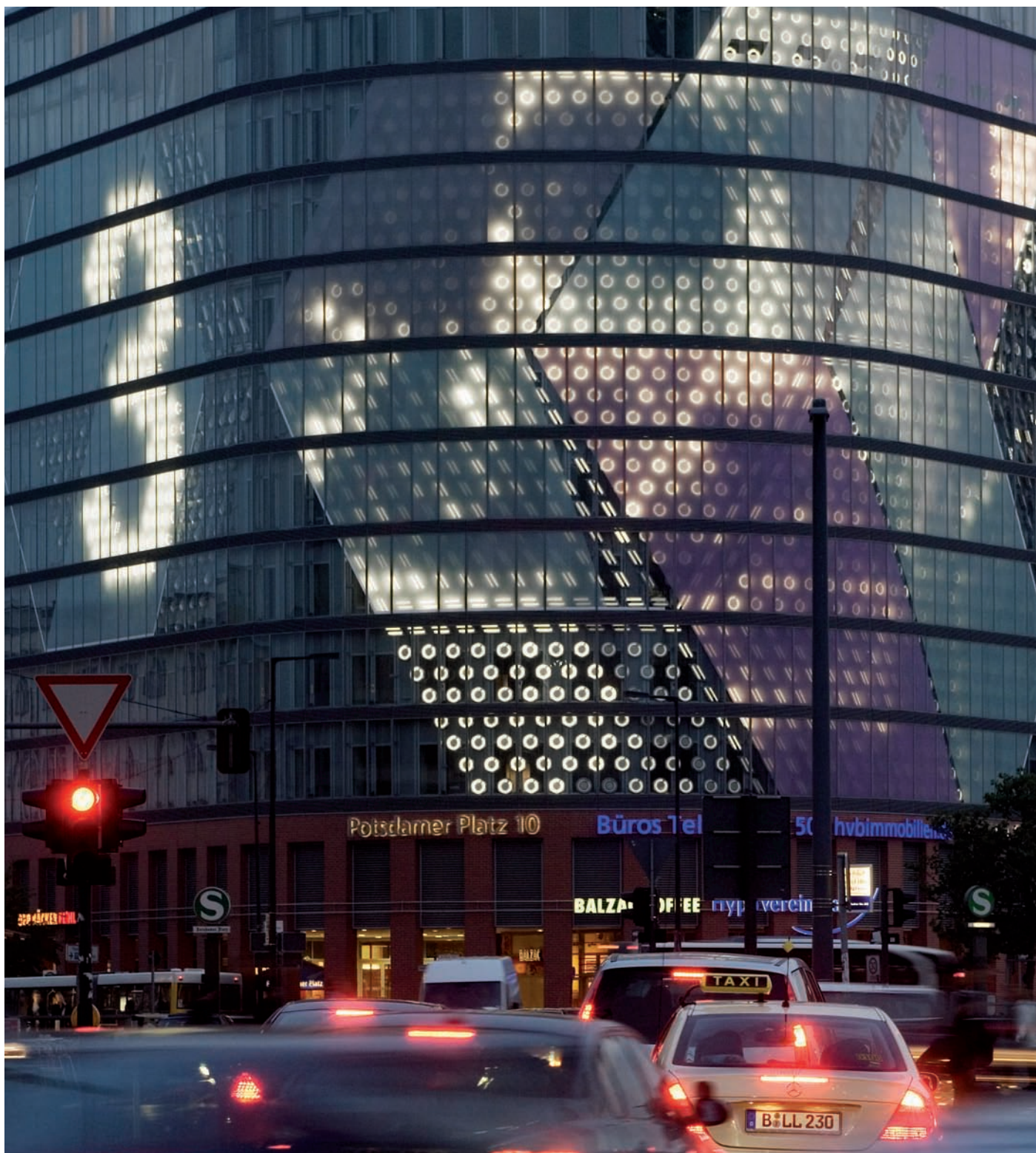
SPOTS, Light- and Media Installation at Potsdamer Platz in Berlin, 2005

Temporary installation with 1774 computer controlled linear and circular fluorescent light tubes

Dimensions ~1350m<sup>2</sup>

Foto ©Bernd Hiepe | Artistic Content Displayed ©Carsten Nikolai

Further images & video: [www.realu.de/#PROJECT,81,3](http://www.realu.de/#PROJECT,81,3)



**realities:united**

SPOTS, Light- and Media Installation at Potsdamer Platz in Berlin, 2005

Temporary installation with 1774 computer controlled linear and circular fluorescent light tubes

Dimensions ~1350m2

Foto ©Bernd Hiepe | Artistic Content Displayed ©Nina Fischer & Moruan El Sani

Further images & video: [www.realu.de/#PROJECT,81,3](http://www.realu.de/#PROJECT,81,3)



**realities:united**

SPOTS, Light- and Media Installation at Potsdamer Platz in Berlin, 2005

Temporary installation with 1774 computer controlled linear and circular fluorescent light tubes

Dimensions ~1350m<sup>2</sup>

Foto ©Bernd Hiepe | Artistic Content Displayed ©realities:united with John Dekron

Further images & video: [www.realu.de/#PROJECT,81,3](http://www.realu.de/#PROJECT,81,3)



**realities:united**

reinraus, 2001

Instant Balkony Design (Prototype)

Dimensions 120cm x 150cm x 250cm

Photo ©realities:united

Further images & video: [www.realu.de/#PROJECT,103,3](http://www.realu.de/#PROJECT,103,3)





**realities:united**

reinraus, 2001

Instant Balkony Design (Prototype)

Dimensions 120cm x 150cm x 250cm

Videostills ©realities:united

Further images & video: [www.realu.de/#PROJECT,103,3](http://www.realu.de/#PROJECT,103,3)



**realities:united**

MuseumX, 2006

Imaginary Museum for the Museum Abteiberg Mönchengladbach

Dimensions ~65.000m<sup>3</sup>

Foto ©Natalie Czech

Further images & video: [www.realu.de/#PROJECT,78,3](http://www.realu.de/#PROJECT,78,3)



**realities:united**

MuseumX, 2006

Imaginary Museum for the Museum Abteiberg Mönchengladbach

Production, Installation Process, Political Opening

Dimensions ~65.000m<sup>3</sup>

Foto Collage ©realities:united

Further images & video: [www.realu.de/#PROJECT,78,3](http://www.realu.de/#PROJECT,78,3)



**realities:united**

MuseumX, 2006

Imaginary Museum for the Museum Abteiberg Mönchengladbach

Dimensions ~65.000m<sup>3</sup>

Foto ©Natalie Czech

Further images & video: [www.realu.de/#PROJECT,78,3](http://www.realu.de/#PROJECT,78,3)



**realities:united**

MuseumX, 2006

Imaginary Museum for the Museum Abteiberg Mönchengladbach

Dimensions ~65.000m<sup>3</sup>

Foto ©Natalie Czech

Further images & video: [www.realu.de/#PROJECT,78,3](http://www.realu.de/#PROJECT,78,3)



## **realities:united**

MuseumComplex, 2007

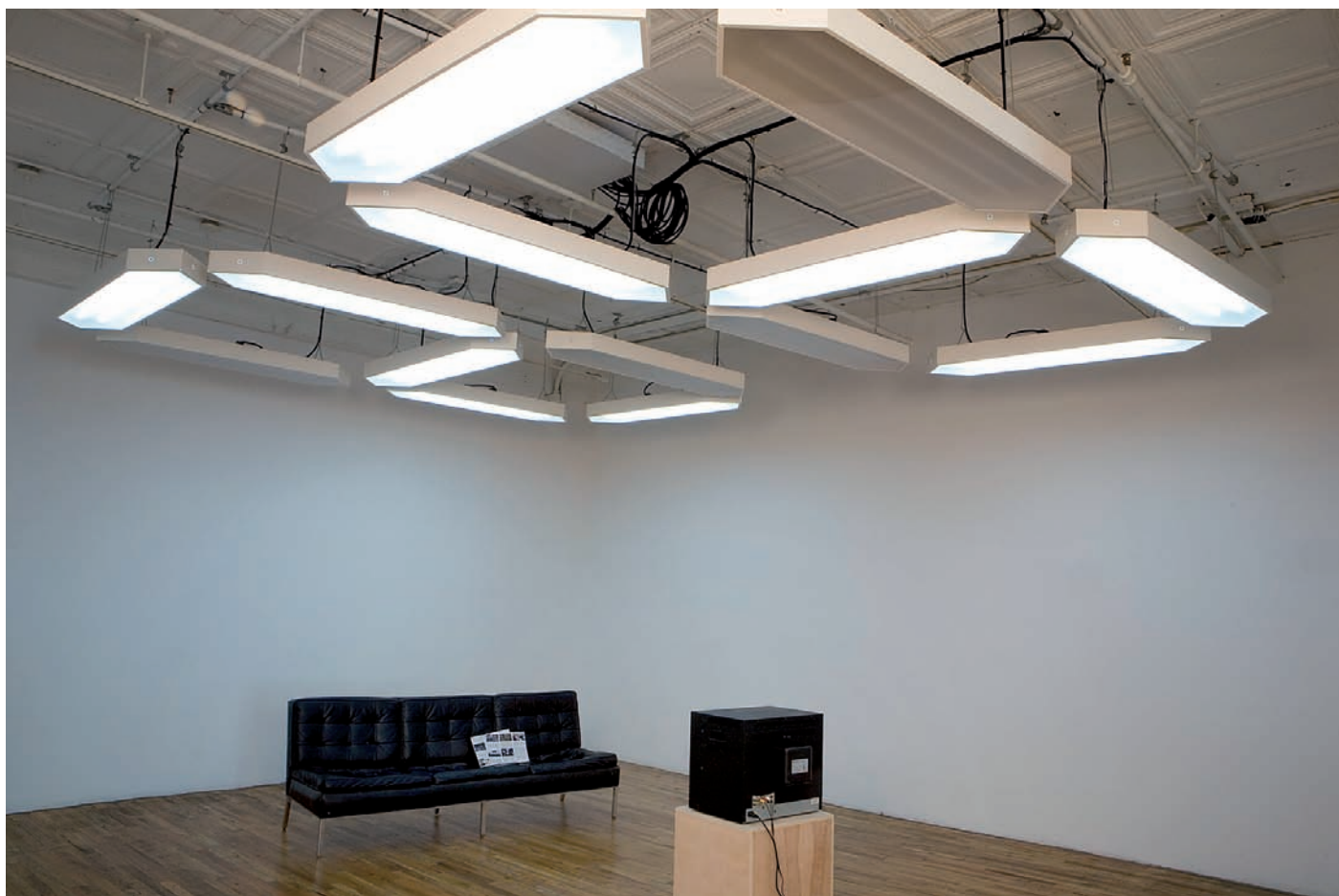
After Image of MuseumX in the changing exhibition space of Museum Abteiberg Mönchengladbach

Installation with original elements of the imaginary MuseumX

14 out of 64 facade elements, 473cm x 214cm each; 2 Video Projections: 1. Robert Morris, „Site“, 1964, 2. Maija Timonen with MOCA MAAS, „Was dort war, ist nicht hier, eben“, 2007

Foto ©Natalie Czech

Further images & video: [www.realu.de/#PROJECT,78,3](http://www.realu.de/#PROJECT,78,3)



**realities:united**

Contemporary Architecture, 2007

Installation, 14 computer controlled luminaires (2 seven-segment displays)

Dimensions 4664mm x 3491mm

Foto ©2007 Artistsspace, New York

Further images & video: [www.realu.de/#PROJECT,76,3](http://www.realu.de/#PROJECT,76,3)



**realities:united**

Contemporary Architecture, 2007 (photo at Bauhaus Archive, Berlin, 2009)

Installation, 14 computer controlled luminaires (2 seven-segment displays)

Dimensions 4664mm x 3491mm

Foto ©2009 realities:united, Berlin

Further images & video: [www.realu.de/#PROJECT,76,3](http://www.realu.de/#PROJECT,76,3)





**realities:united**

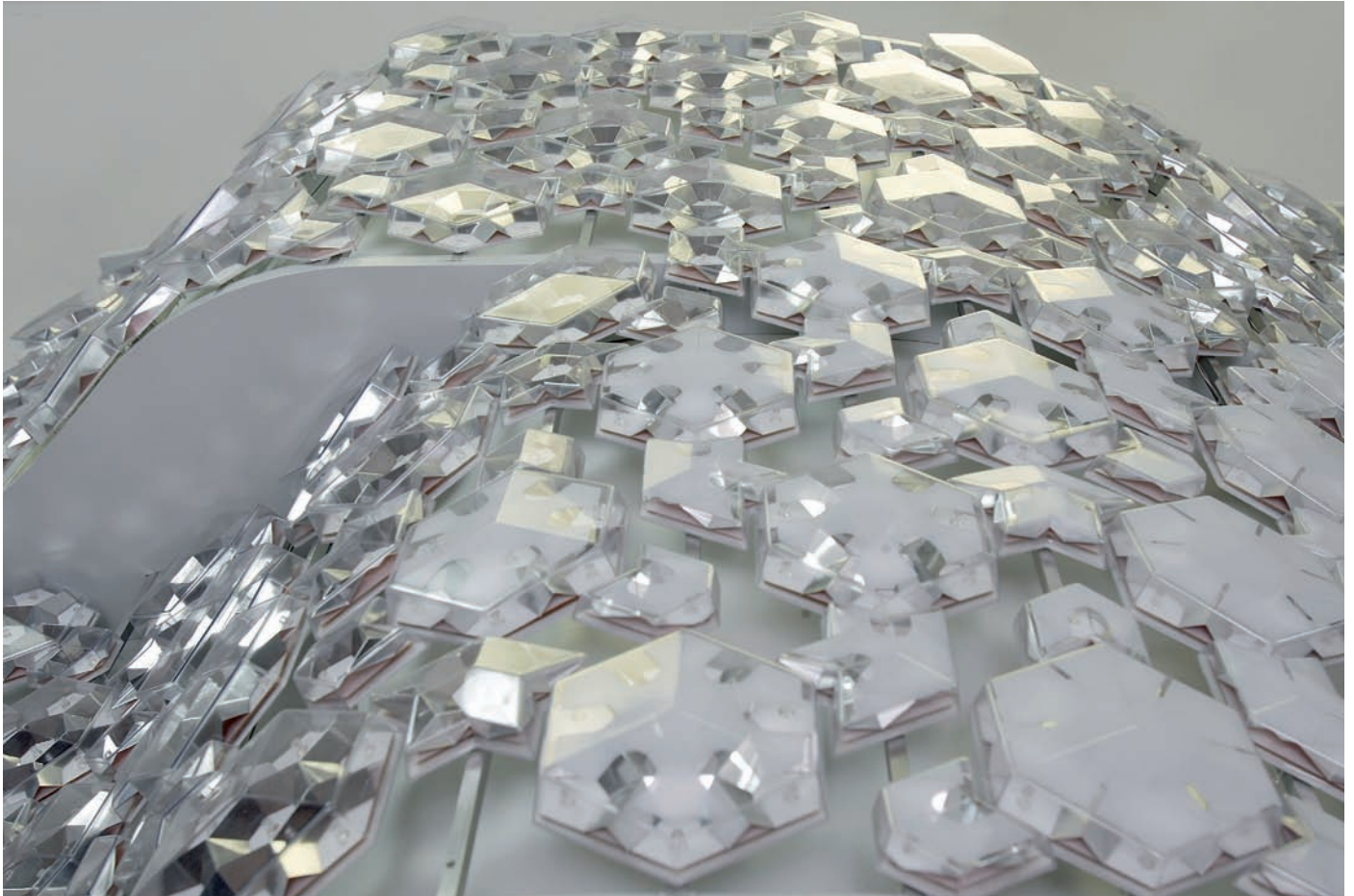
Contemporary Architecture, 2007 (photo at DMY, Berlin, 2009)

Installation, 14 computer controlled luminaires (2 seven-segment displays)

Dimensions 4664mm x 3491mm

Foto ©2009 realities:united, Berlin

Further images & video: [www.realu.de/#PROJECT,76,3](http://www.realu.de/#PROJECT,76,3)



**realities:united**

Crystal Mesh, 2009

Facade Installation for the Iluma Urban Entertainment Centre, Singapore

Dimensions ~3.500m<sup>2</sup>

1:10 Scale Model

Foto ©Dirk Enters | Building ©WOHA

Further images & video: [www.realu.de/#PROJECT,138,1](http://www.realu.de/#PROJECT,138,1)



**realities:united**

Crystal Mesh, 2009

Facade Installation for the Iluma Urban Entertainment Centre, Singapore

Dimensions ~3.500m<sup>2</sup>

Installation on Site 10/08

Foto ©realities:united | Building ©WOHA

Further images & video: [www.realu.de/#PROJECT,138,1](http://www.realu.de/#PROJECT,138,1)



**realities:united**

Crystal Mesh, 2009

Facade Installation for the Iluma Urban Entertainment Centre, Singapore

Dimensions ~3.500m<sup>2</sup>

Testing 10/09

Foto ©realities:united | Building ©WOHA

Further images & video: [www.realu.de/#PROJECT,138,1](http://www.realu.de/#PROJECT,138,1)



**realities:united**

Crystal Mesh, 2009

Facade Installation for the Iluma Urban Entertainment Centre, Singapore

Dimensions ~3.500m<sup>2</sup>

Installation on Site 03/09

Foto ©realities:united | Building ©WOHA

Further images & video: [www.realu.de/#PROJECT,138,1](http://www.realu.de/#PROJECT,138,1)



## realities:united

Crystal Mesh, 2009

Facade Installation for the Iluma Urban Entertainment Centre, Singapore

Dimensions ~3.500m<sup>2</sup>

Installation on Site 03/09

Foto ©Tim Griffith | Building ©WOHA

Further images & video: [www.realu.de/#PROJECT,138,1](http://www.realu.de/#PROJECT,138,1)



**realities:united**

Crystal Mesh, 2009

Facade Installation for the Iluma Urban Entertainment Centre, Singapore

Dimensions ~3.500m<sup>2</sup>

Testing 10/09

Foto ©realities:united | Building ©WOHA

Further images & video: [www.realu.de/#PROJECT,138,1](http://www.realu.de/#PROJECT,138,1)



## **realities:united**

Amp, Completion scheduled for 2008  
Generative Video Facade Installation for the Wilkie Edge, Singapore  
Dimensions ~800m<sup>2</sup>  
Software Testing on Site  
Foto ©realities:united | Building ©WOHA  
Further images & video: [www.realu.de/#PROJECT,140,3](http://www.realu.de/#PROJECT,140,3)





## realities:united

AAmp, Completion scheduled for 2008  
Generative Video Facade Installation for the Wilkie Edge, Singapore  
Dimensions ~800m<sup>2</sup>  
Software Testing on Site  
Foto ©realities:united | Building ©WOHA  
Further images & video: [www.realu.de/#PROJECT,140,3](http://www.realu.de/#PROJECT,140,3)



## realities:united

AAmp, Completion scheduled for 2008  
Generative Video Facade Installation for the Wilkie Edge, Singapore  
Dimensions ~800m<sup>2</sup>  
Software Testing on Site  
Foto ©realities:united | Building ©WOHA  
Further images & video: [www.realu.de/#PROJECT,140,3](http://www.realu.de/#PROJECT,140,3)



## realities:united

Amp, Completion scheduled for 2008  
Generative Video Facade Installation for the Wilkie Edge, Singapore  
Dimensions ~800m<sup>2</sup>  
Software Testing on Site  
Foto ©realities:united | Building ©WOHA  
Further images & video: [www.realu.de/#PROJECT,140,3](http://www.realu.de/#PROJECT,140,3)



## realities:united

AAmp, Completion scheduled for 2008

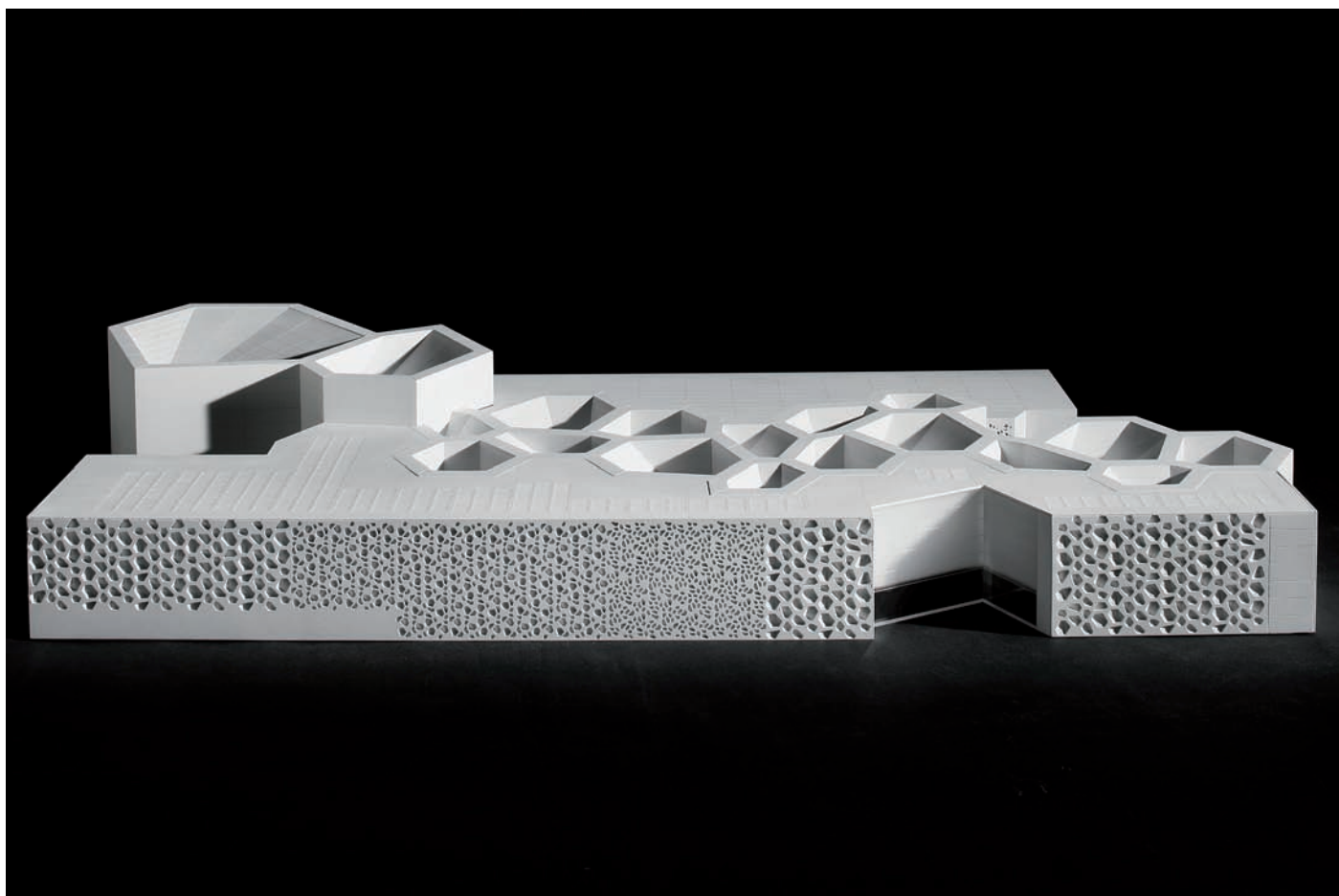
Generative Video Facade Installation for the Wilkie Edge, Singapore

Dimensions ~800m<sup>2</sup>

Software Testing on Site

Foto ©Tim Griffith | Building ©WOHA

Further images & video: [www.realu.de/#PROJECT,140,3](http://www.realu.de/#PROJECT,140,3)



**realities:united**

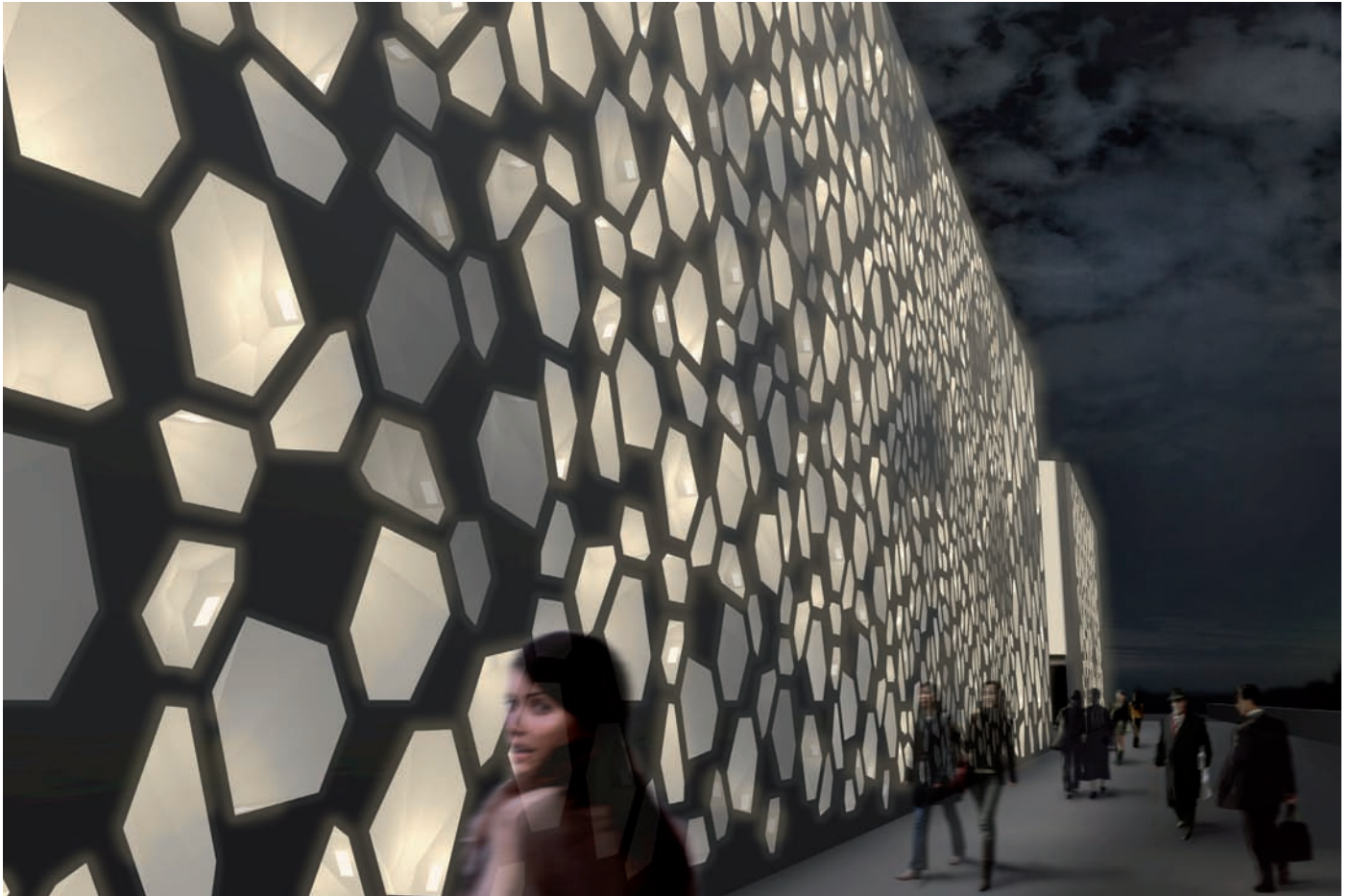
C4, Completion scheduled for 2011

Facade Integrated Media Installation for the Espacio de Creación Artística Contemporánea, Cordoba, Spain

Dimensions ~1250m<sup>2</sup>

Model photo ©Nieto Sobejano | Building ©Nieto Sobejano

Further images & video: [www.realu.de/#PROJECT,77,3](http://www.realu.de/#PROJECT,77,3)



**realities:united**

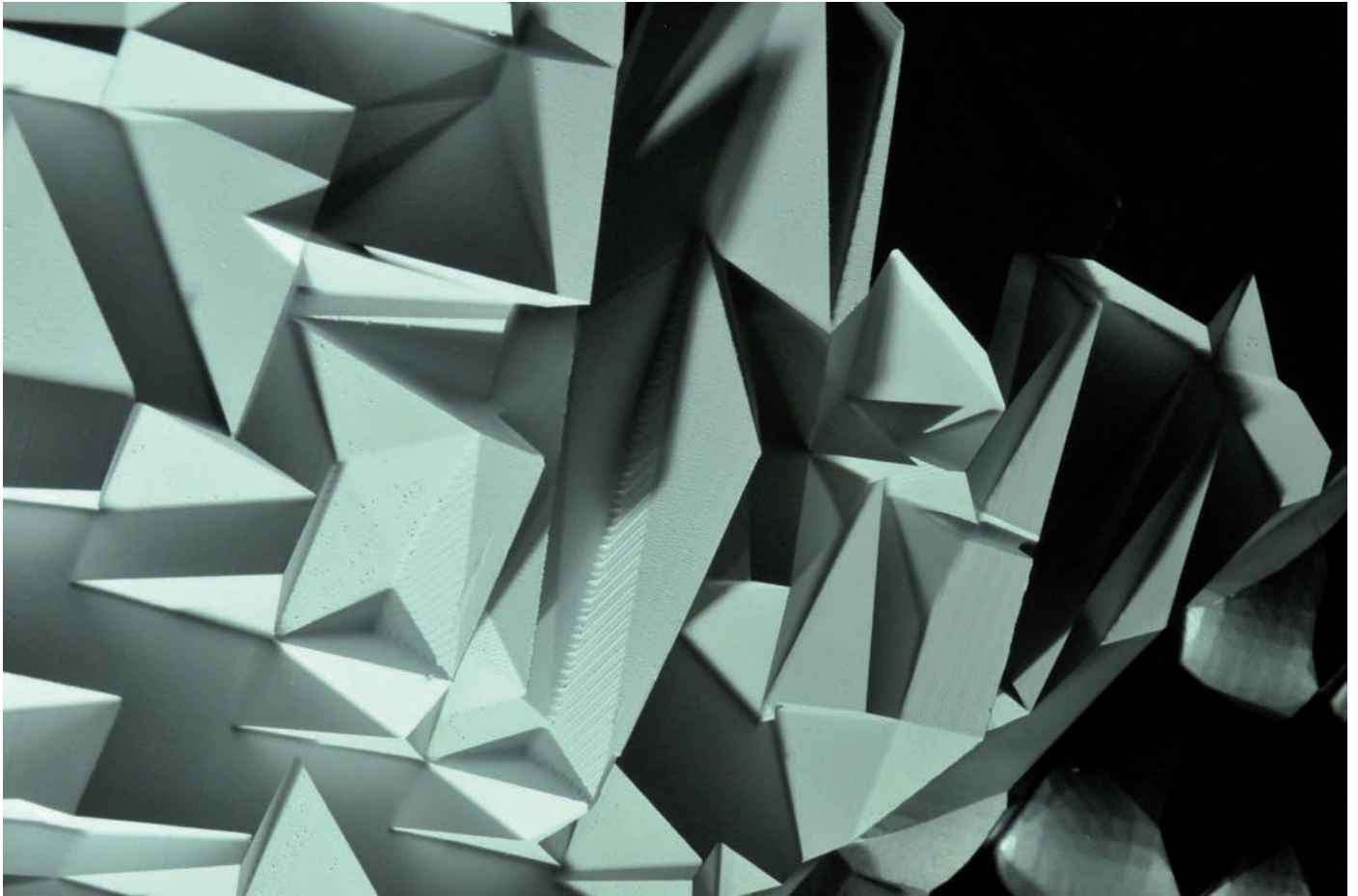
C4, Completion scheduled for 2011

Facade Integrated Media Installation for the Espacio de Creación Artística Contemporánea, Cordoba, Spain

Dimensions ~1250m<sup>2</sup>

Rendering ©realities:united | Building ©Nieto Sobejano

Further images & video: [www.realu.de/#PROJECT,77,3](http://www.realu.de/#PROJECT,77,3)



**realities:united**

C4, Completion scheduled for 2011

Facade Integrated Media Installation for the Espacio de Creación Artística Contemporánea, Córdoba, Spain

Bowl Surface Prototype (CNC-milled foam & paint)

Dimensions ~1250m<sup>2</sup>

Foto ©realities:united | Building ©Nieto Sobejano

Further images & video: [www.realu.de/#PROJECT,77,3](http://www.realu.de/#PROJECT,77,3)



**realities:united**

C4, Completion scheduled for 2011

Facade Integrated Media Installation for the Espacio de Creación Artística Contemporánea, Córdoba, Spain

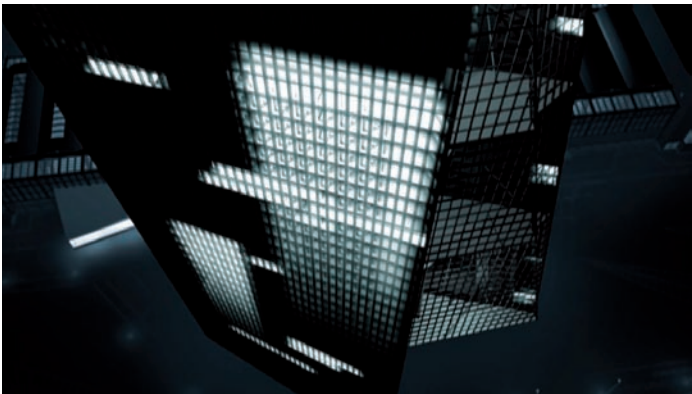
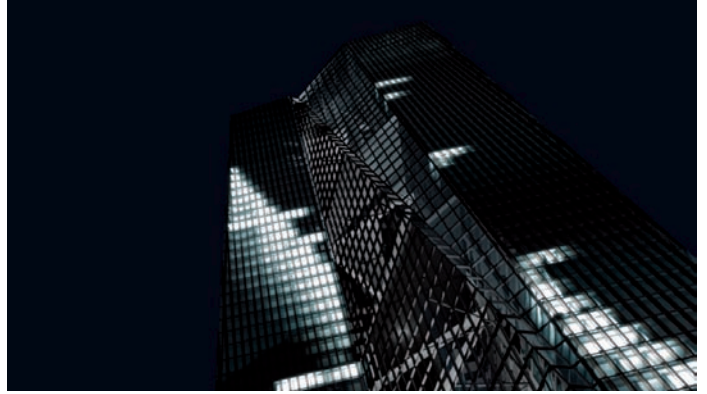
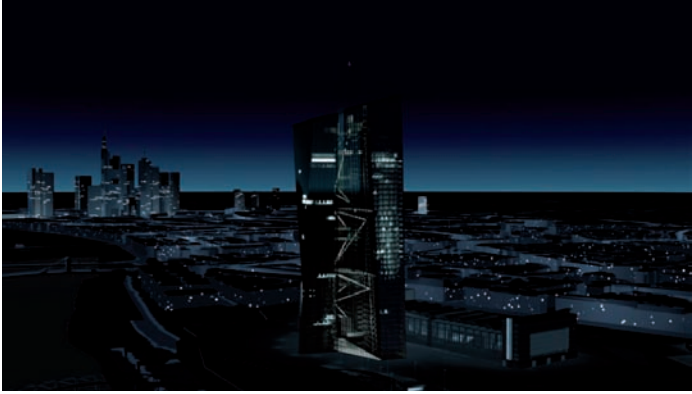
Facade Prototype (Glasfibre Reinforced Concrete, LED Light Units)

Dimensions ~1250m<sup>2</sup>

Foto ©realities:united | Building ©Nieto Sobejano

Further images & video: [www.realu.de/#PROJECT,77,3](http://www.realu.de/#PROJECT,77,3)





**realities:united**

NIX, 2007-2011

Spatial Light- and Media Installation for the European Central Bank, Frankfurt

Dimensions 245.000m<sup>3</sup>

Fimsstills ©2007 realities:united | Building ©Coop Himmelb(l)au

Further images & video: [www.realu.de/#PROJECT,178,3](http://www.realu.de/#PROJECT,178,3)



**realities:united**

Powerplant, 2005

Kinetic light sculptures as a catalyst and symbol of the transformation of a post-industrial urban development area, Pasadena, California, USA

Dimensions: approx. 2 square miles

Rendering ©2005 realities:united | Project in collaboration with Nik Hafemaas



**realities:united**

Powerplant, 2005 (prototype, realization on hold)

Kinetic light sculptures as a catalyst and symbol of the transformation of a post-industrial urban development area, Pasadena, California, USA

Dimensions: 17m height

Photo ©2005 realities:united | Project in collaboration with Nik Hafemaas



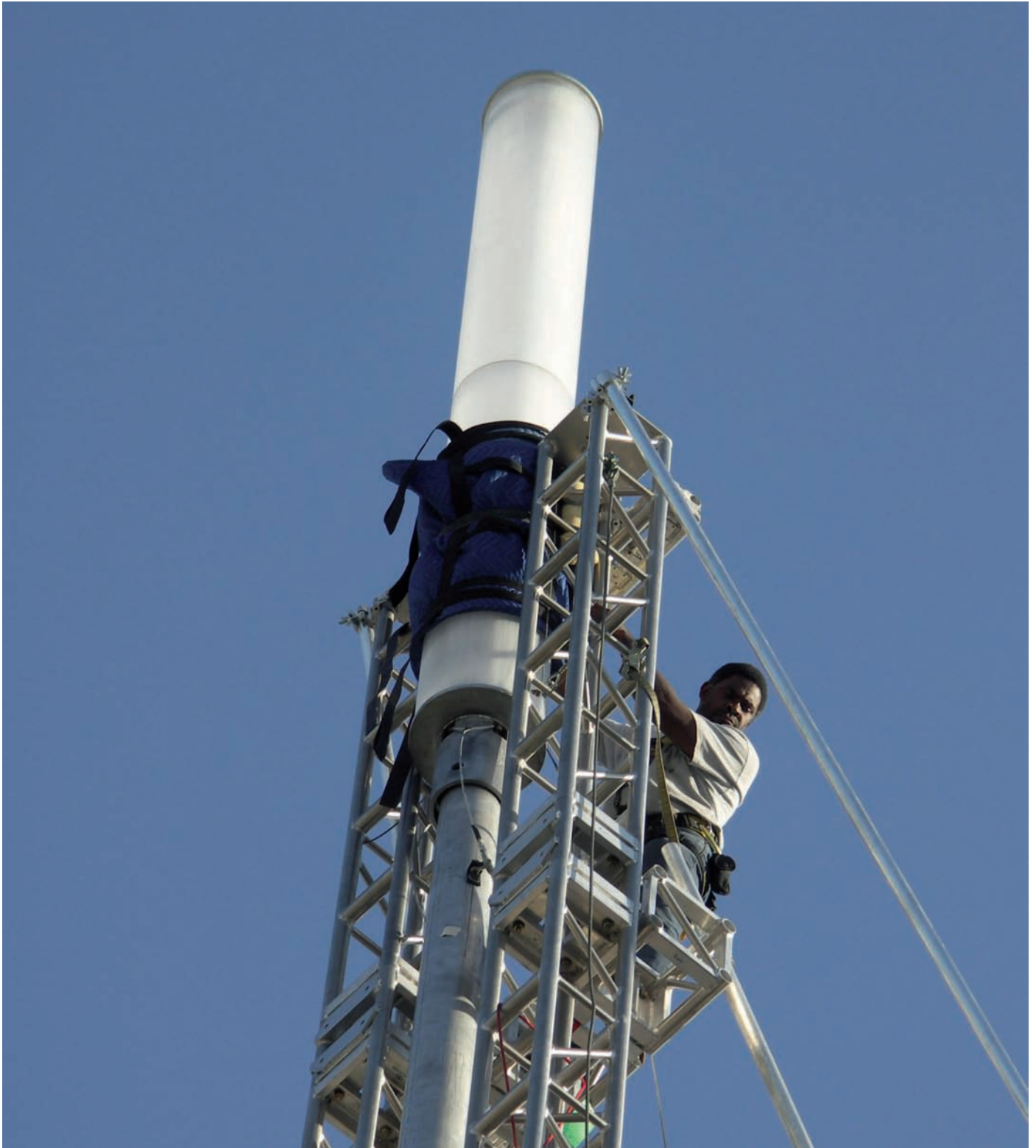
**realities:united**

Powerplant, 2005 (prototype, realization on hold)

Kinetic light sculptures as a catalyst and symbol of the transformation of a post-industrial urban development area, Pasadena, California, USA

Dimensions: 17m height

Photo ©2005 realities:united | Project in collaboration with Nik Hafermaas



**realities:united**

Powerplant, 2005 (prototype, realization on hold)

Kinetic light sculptures as a catalyst and symbol of the transformation of a post-industrial urban development area, Pasadena, California, USA

Dimensions: 17m height

Photo ©2005 realities:united | Project in collaboration with Nik Hafermaas



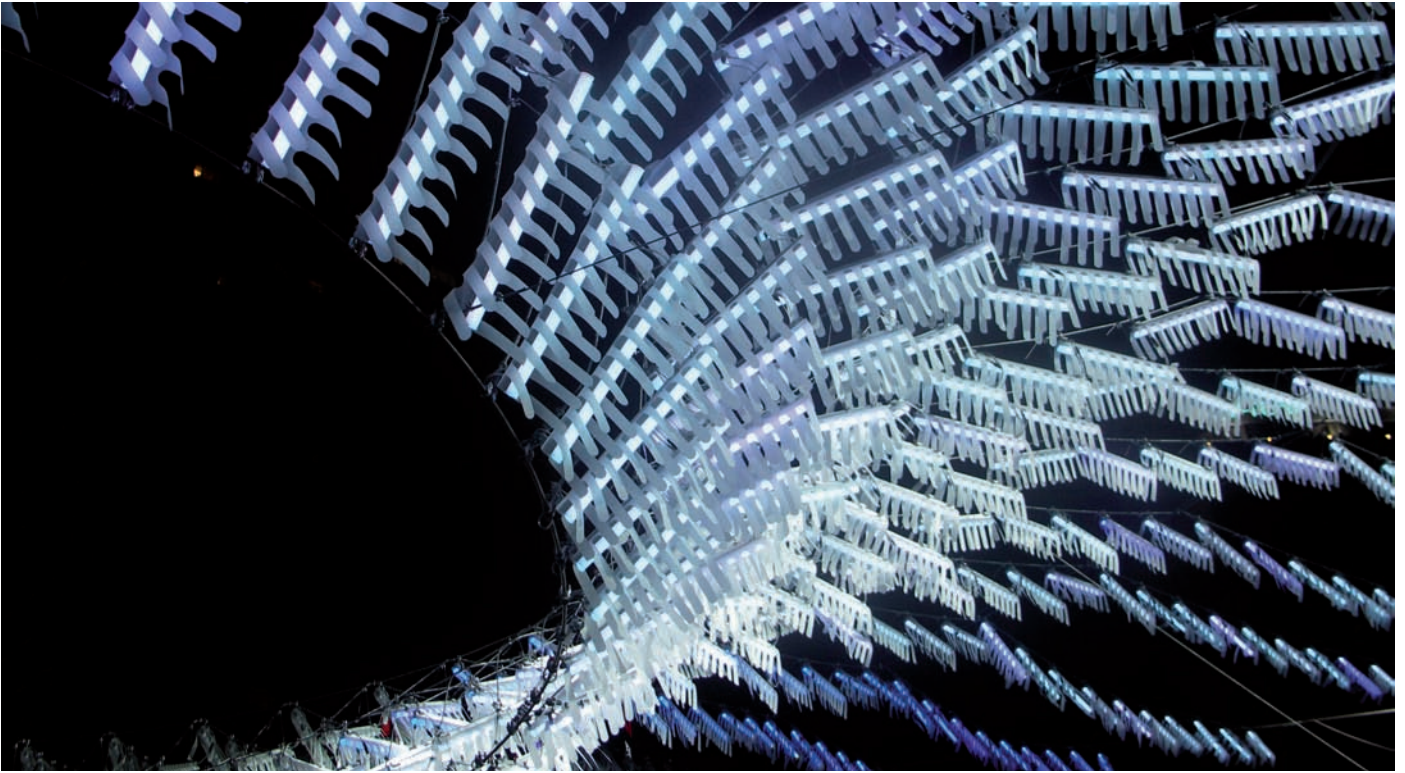
**realities:united**

Mediacloud, 2008

Swarm of lights as hovering media installation for an open-air festival, Seoul Plaza, Soeul, South Korea

Dimensions: 55m diameter x 16m height

Photo ©2008 Yong-Kwan Kim | in collaboration with MASS Studies



**realities:united**

Mediacloud, 2008

Swarm of lights as hovering media installation for an open-air festival, Seoul Plaza, Soeul, South Korea

Dimensions: 55m diameter x 16m height

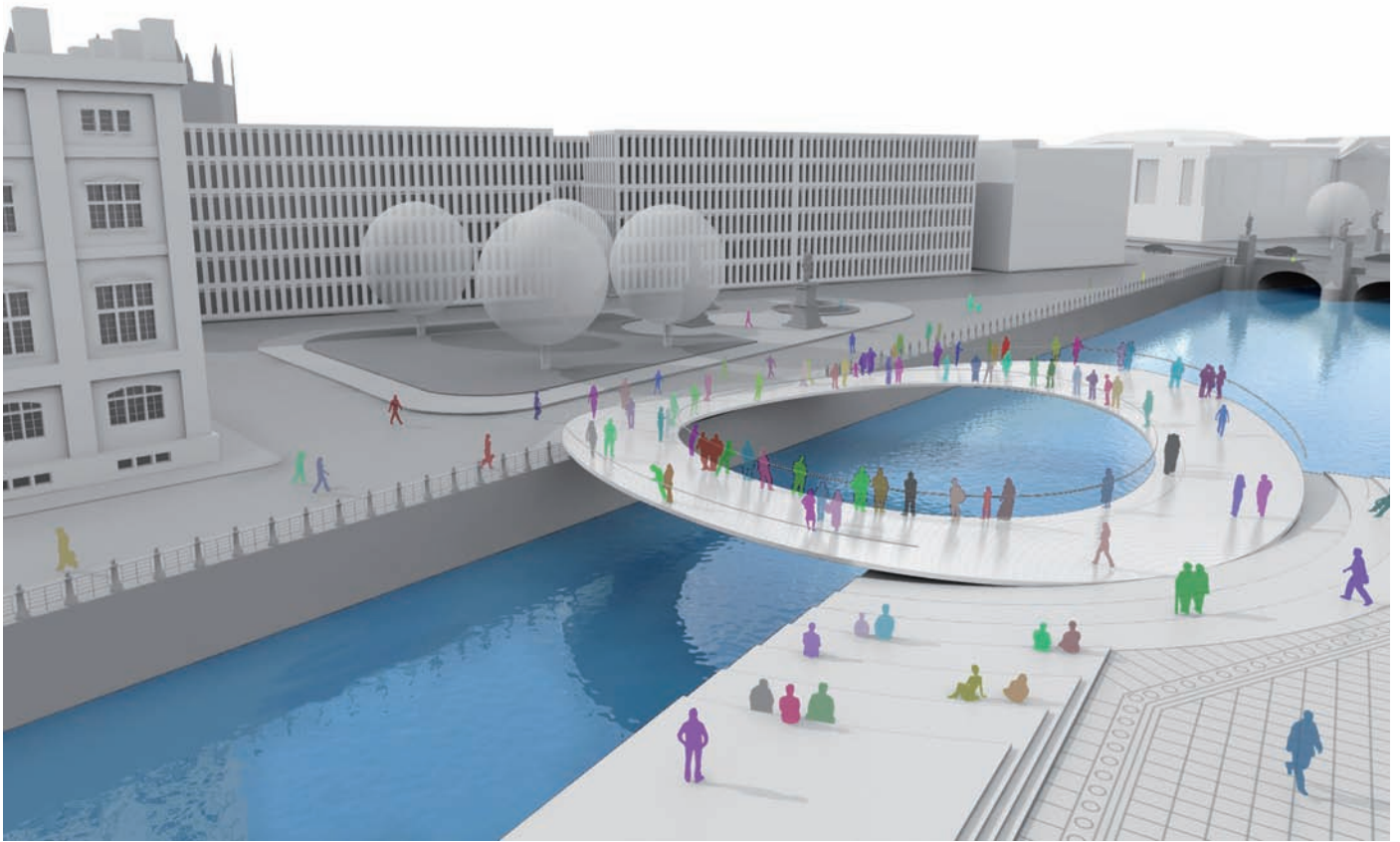
Photo ©2008 realities:united | in collaboration with MASS Studies



**realities:united**

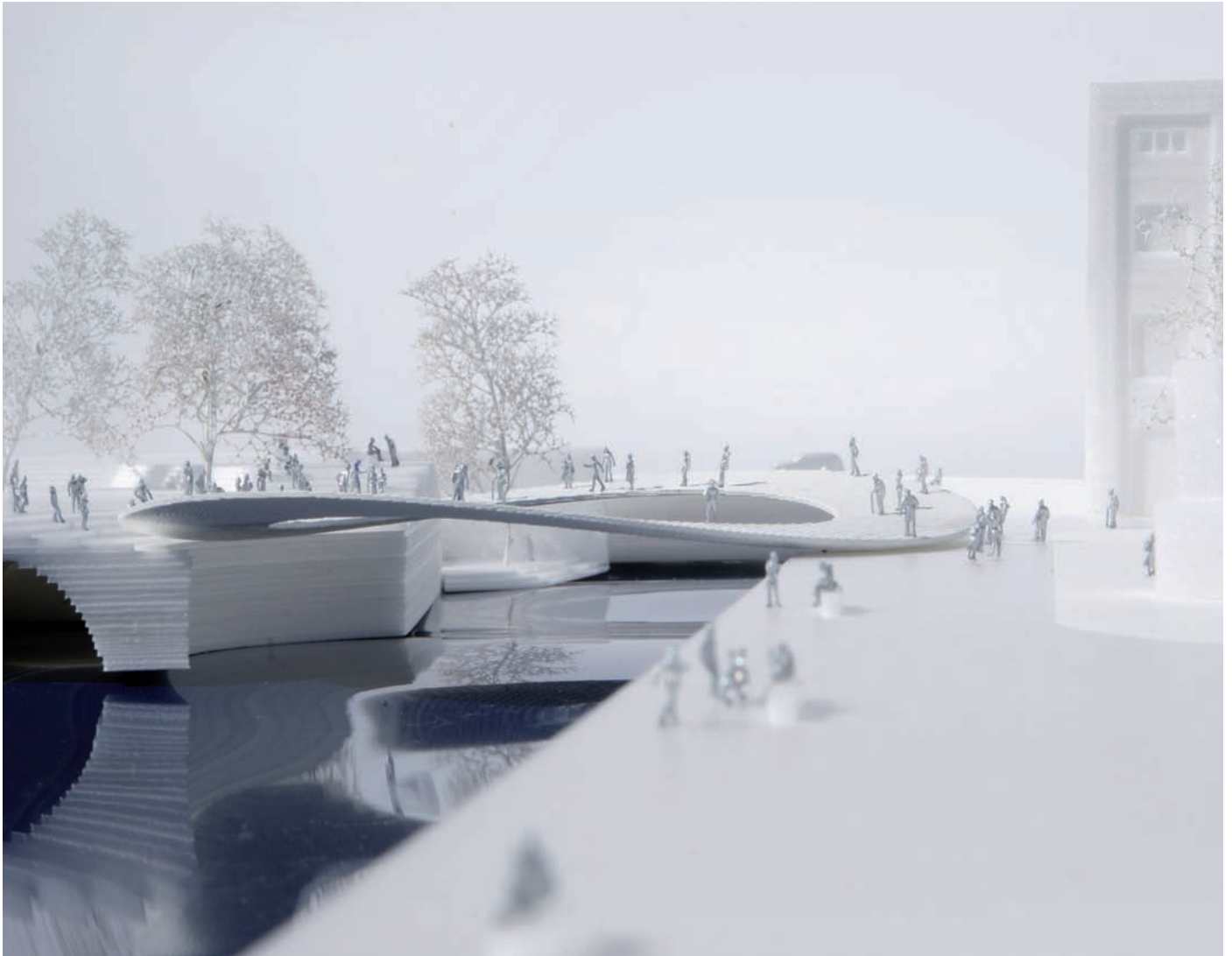
Freiheits- und Einheitsdenkmal, 2010 (awarded competition entry)  
Proposal for a circular bridge as an „infrastructural“ monument at Schlossplatz in Berlin  
Diameter: 32m  
Rendering ©2010 realities:united | Project in collaboration with BIG Architects





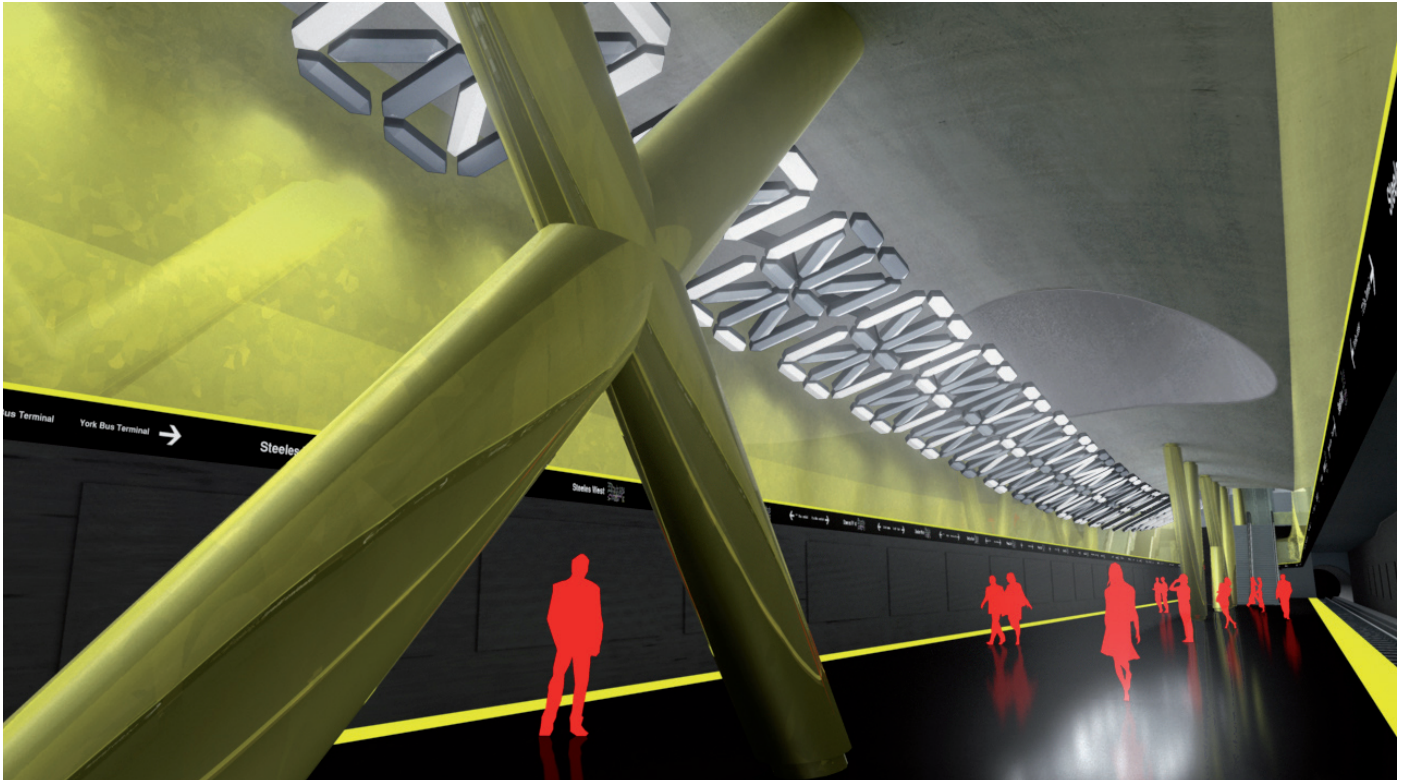
**realities:united**

Freiheits- und Einheitsdenkmal, 2010 (awarded competition entry)  
Proposal for a circular bridge as an „infrastructural“ monument at Schlossplatz in Berlin  
Diameter: 32m  
Rendering ©2010 realities:united | Project in collaboration with BIG Architects



**realities:united**

Freiheits- und Einheitsdenkmal, 2010 (awarded competition entry)  
Proposal for a circular bridge as an „infrastructural“ monument at Schlossplatz in Berlin  
Diameter: 32m  
Model Foto ©2010 BIG | Project in collaboration with BIG Architects



**realities:united**

Steeles West, 2009 (realization scheduled for 2014)

Interactive public art installation and illumination system for Steeles West subway station in Toronto (Spadina Line Extension Project)

Dimensions: 125m length x 3m width

Commission by Toronto Transit Cooperation (TTC)

Renderings ©2009 realities:united | Building ©Alsop Architects, London



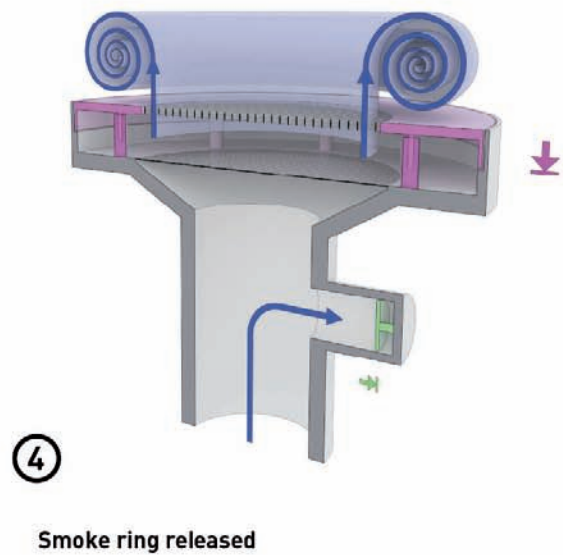
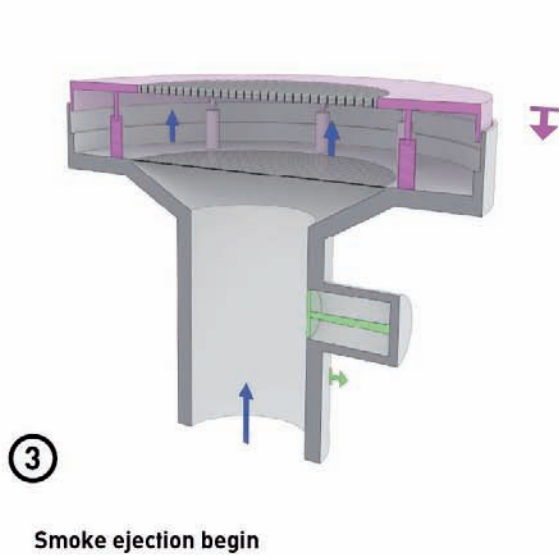
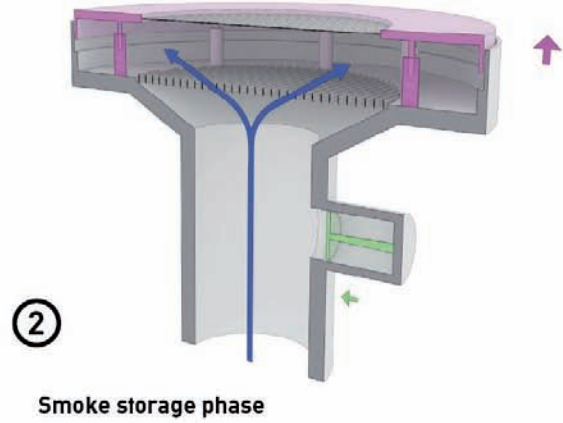
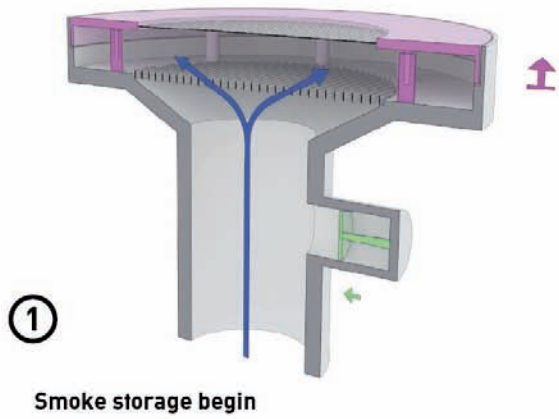
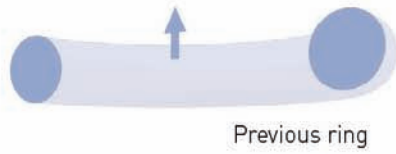
**realities:united**

BIG Vortex (How does a ton of Co2 look like?), 2016 (winning competition entry)

Smoke Ring Generator Installation for Amagerforbrænding Waste-to-Energy Plant, Copenhagen, Denmark

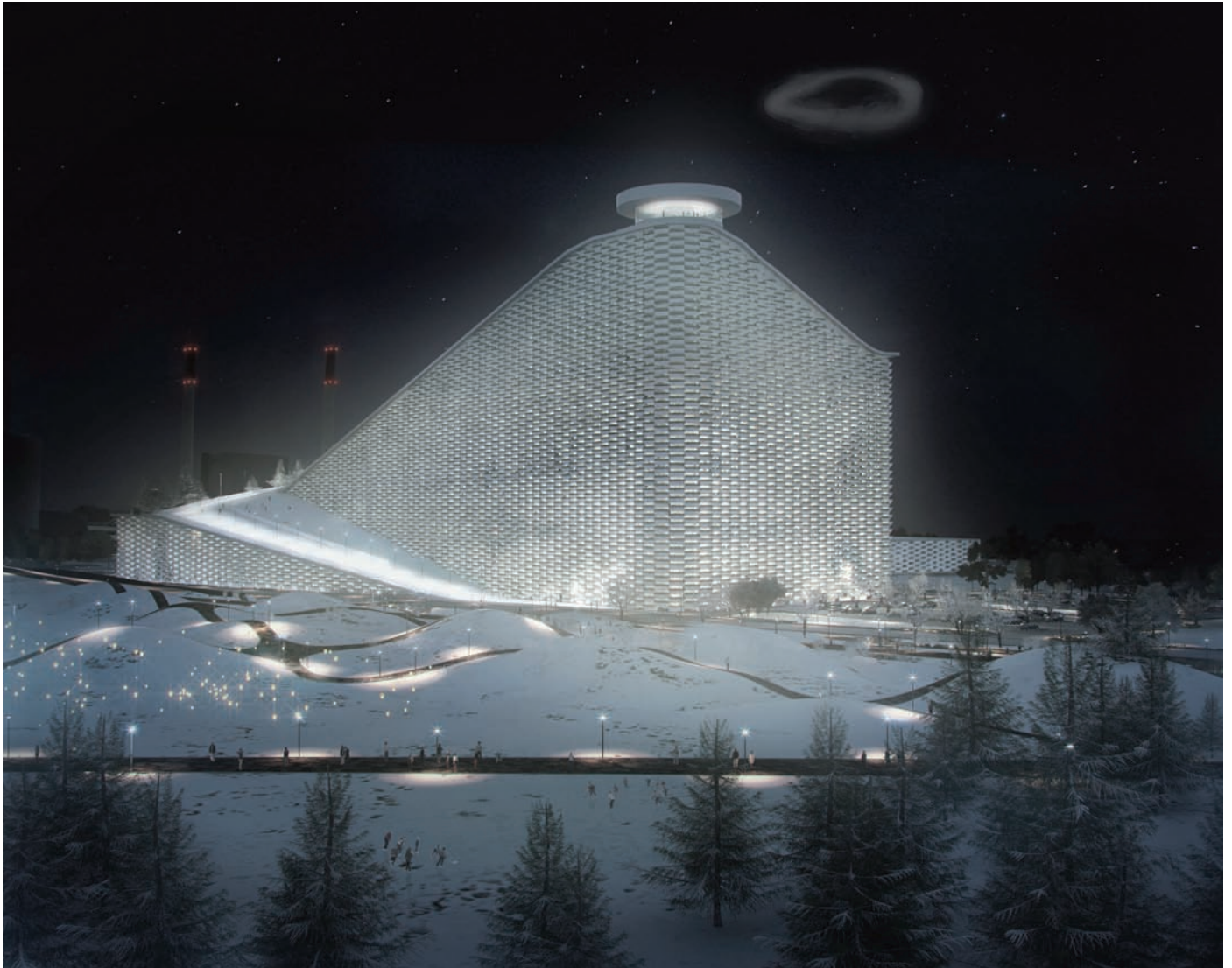
Smoke Rings: Ø 30m, 3m height

Rendering ©2010 BIG | Project in collaboration with BIG Architects



**realities:united**

BIG Vortex (How does a ton of Co2 look like?), 2016 (winning competition entry)  
 Smoke Ring Generator Installation for Amagerforbrænding Waste-to-Energy Plant, Copenhagen, Denmark  
 Smoke Rings: Ø 30m, 3m height  
 Rendering ©2010 BIG | Project in collaboration with BIG Architects



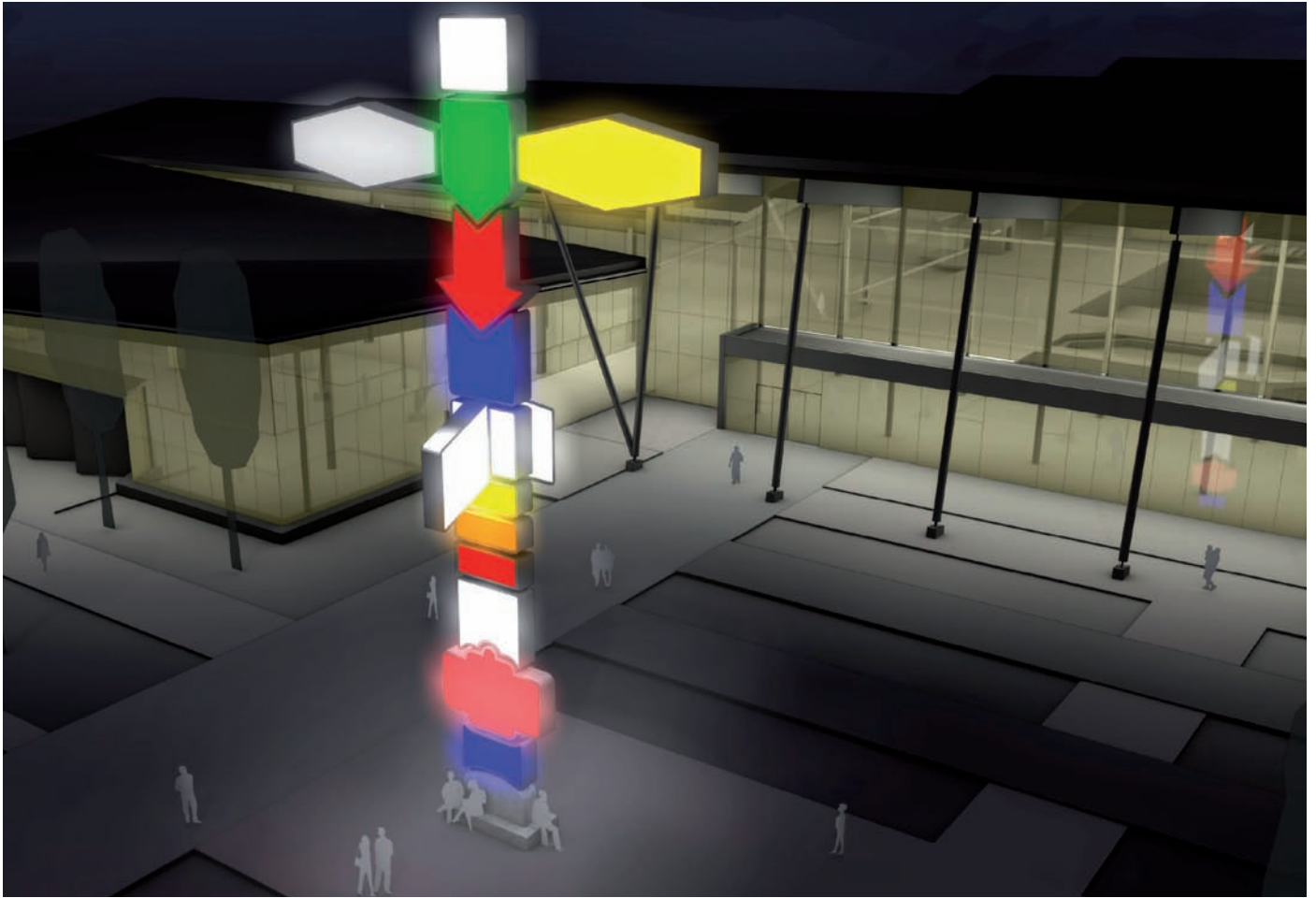
**realities:united**

BIG Vortex (How does a ton of Co2 look like?), 2016 (winning competition entry)

Smoke Ring Generator Installation for Amagerforbrænding Waste-to-Energy Plant, Copenhagen, Denmark

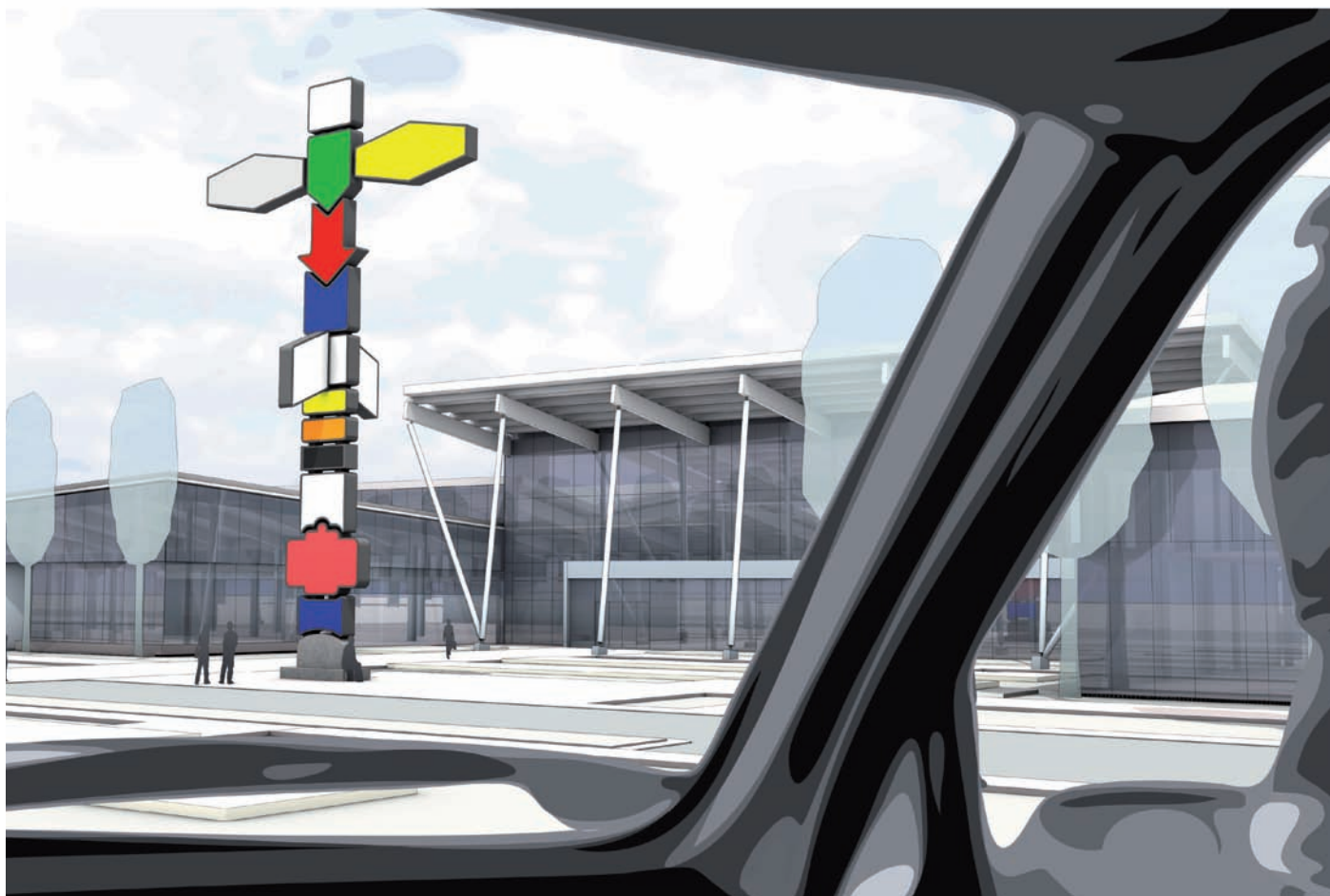
Smoke Rings: Ø 30m, 3m height

Rendering ©2010 BIG | Project in collaboration with BIG Architects



**realities:united**

Totem (working title), 2011  
Public Art Installation for the Meadows Recreation Centre, Edmonton, Canada  
Shortlisted Competition Entry  
Renderings ©2011 realities:united



**realities:united**

Totem (working title), 2011

Public Art Installation for the Meadows Recreation Centre, Edmonton, Canada

Shortlisted Competition Entry

Renderings ©2011 realities:united





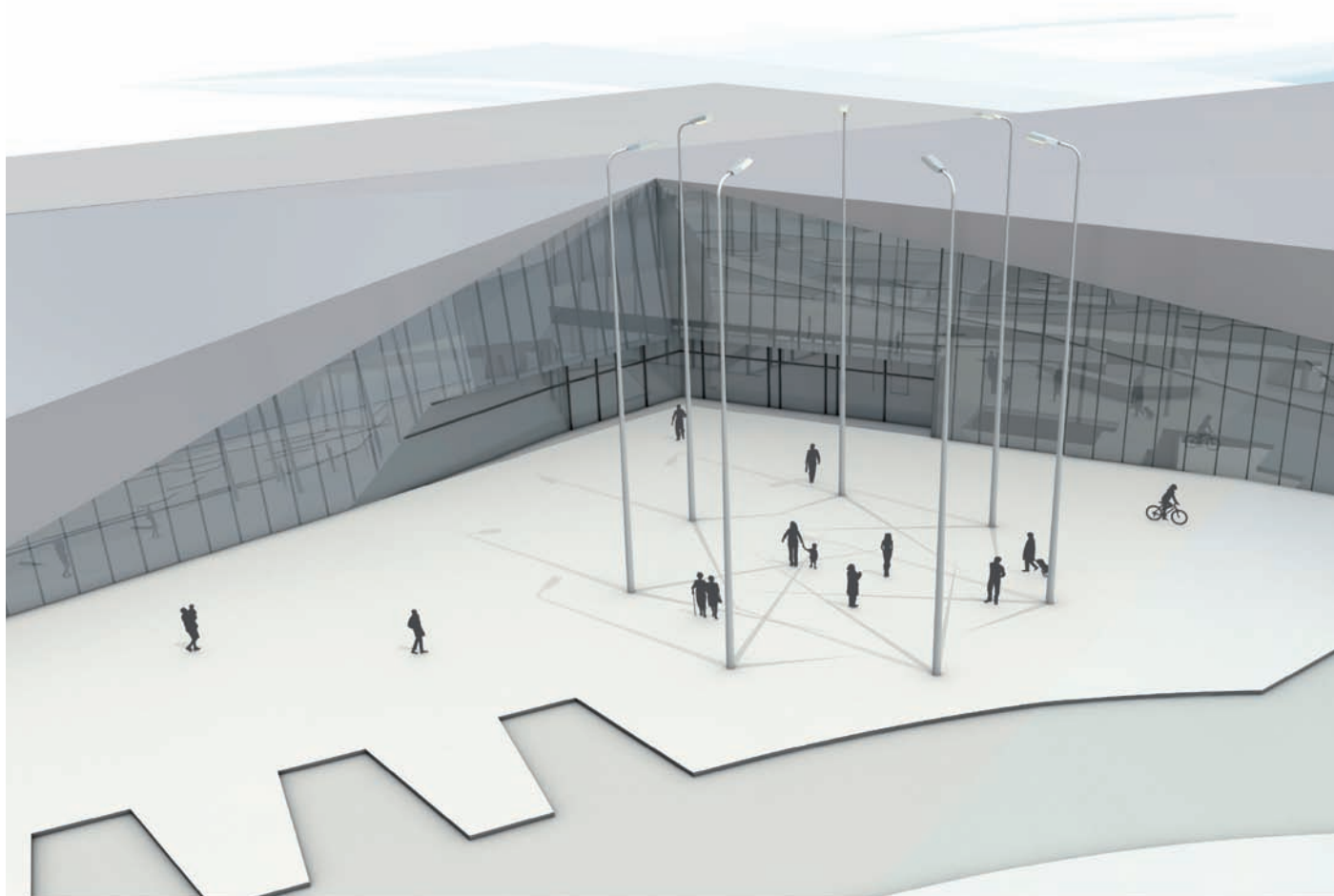
**realities:united**

Street Lights (working title), 2011

Public Art Installation for the Clareview Recreation Centre, Edmonton, Canada

Shortlisted Competition Entry

Renderings ©2011 realities:united



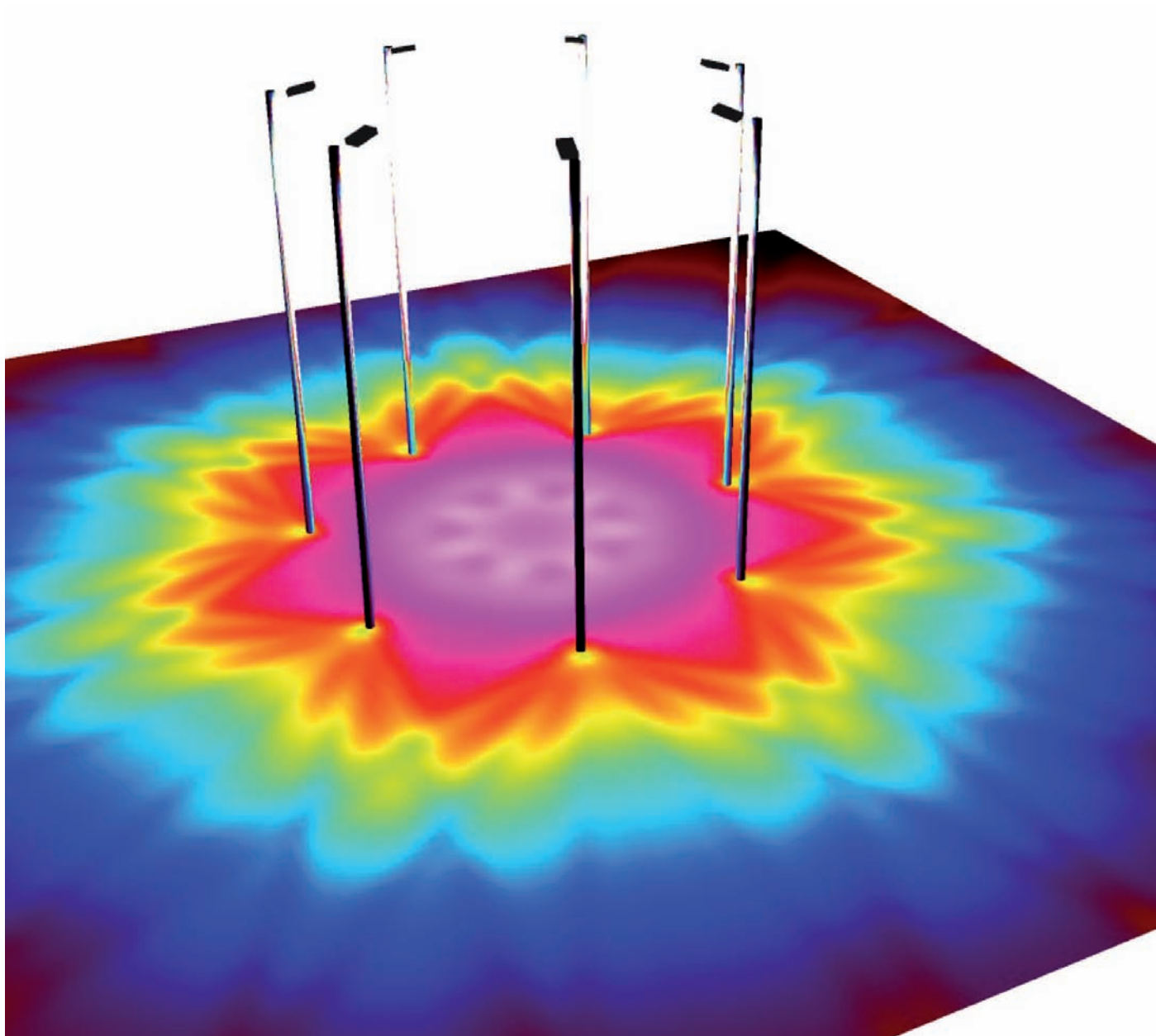
**realities:united**

Street Lights (working title), 2011

Public Art Installation for the Clareview Recreation Centre, Edmonton, Canada

Shortlisted Competition Entry

Renderings ©2011 realities:united



**realities:united**

Street Lights (working title), 2011

Public Art Installation for the Clareview Recreation Centre, Edmonton, Canada

Shortlisted Competition Entry

Renderings ©2011 realities:united



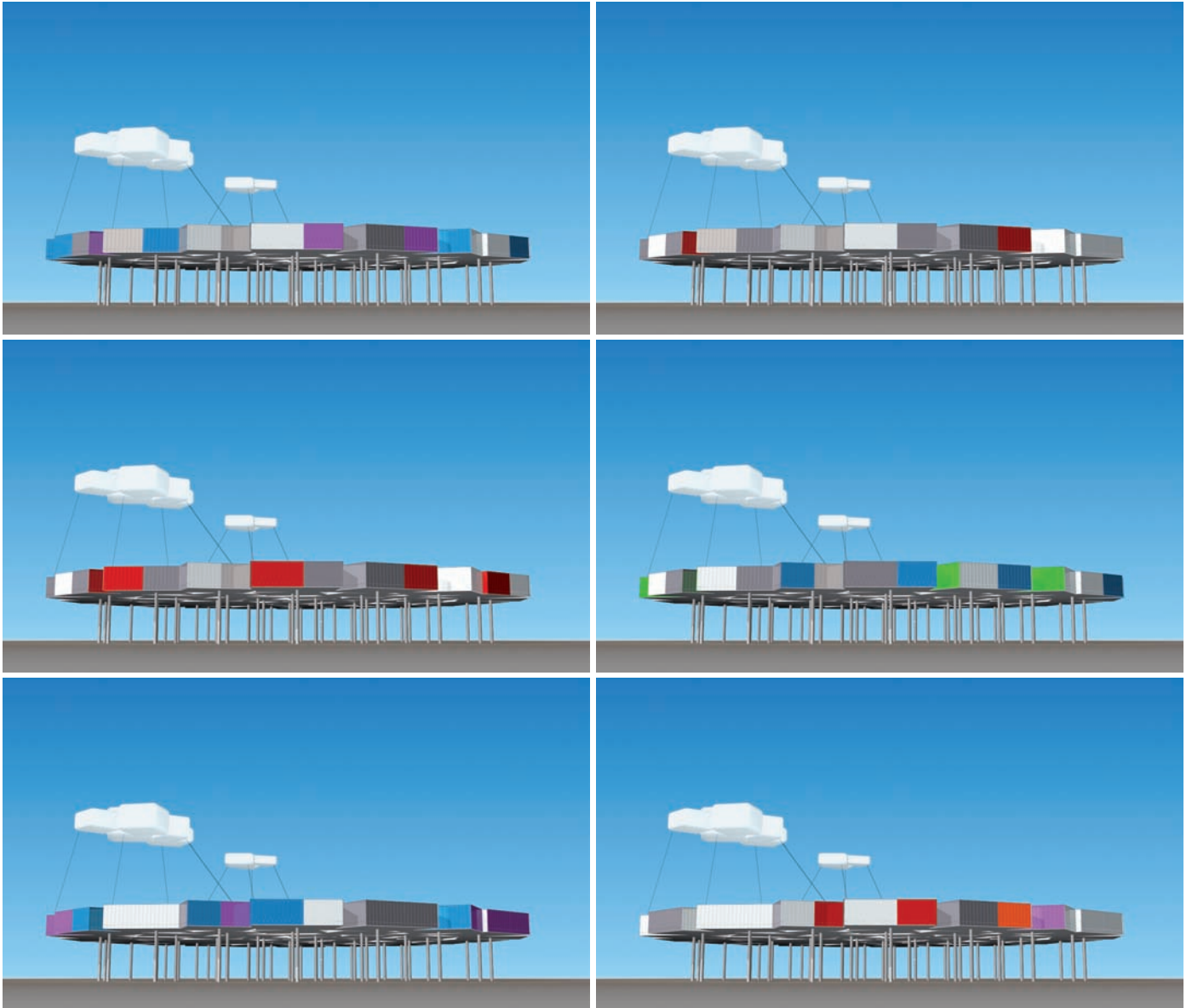
**realities:united**

Toni Areal (working title), 2011  
Public Art Installation & Lighting System for the ZHdK (Zurich University of the Arts)  
Completion scheduled for 2013  
Renderings ©2011 realities:united



**realities:united**

Toni Areal (working title), 2011  
Public Art Installation & Lighting System for the ZHdK (Zurich University of the Arts)  
Completion scheduled for 2013  
Renderings ©2011 realities:united

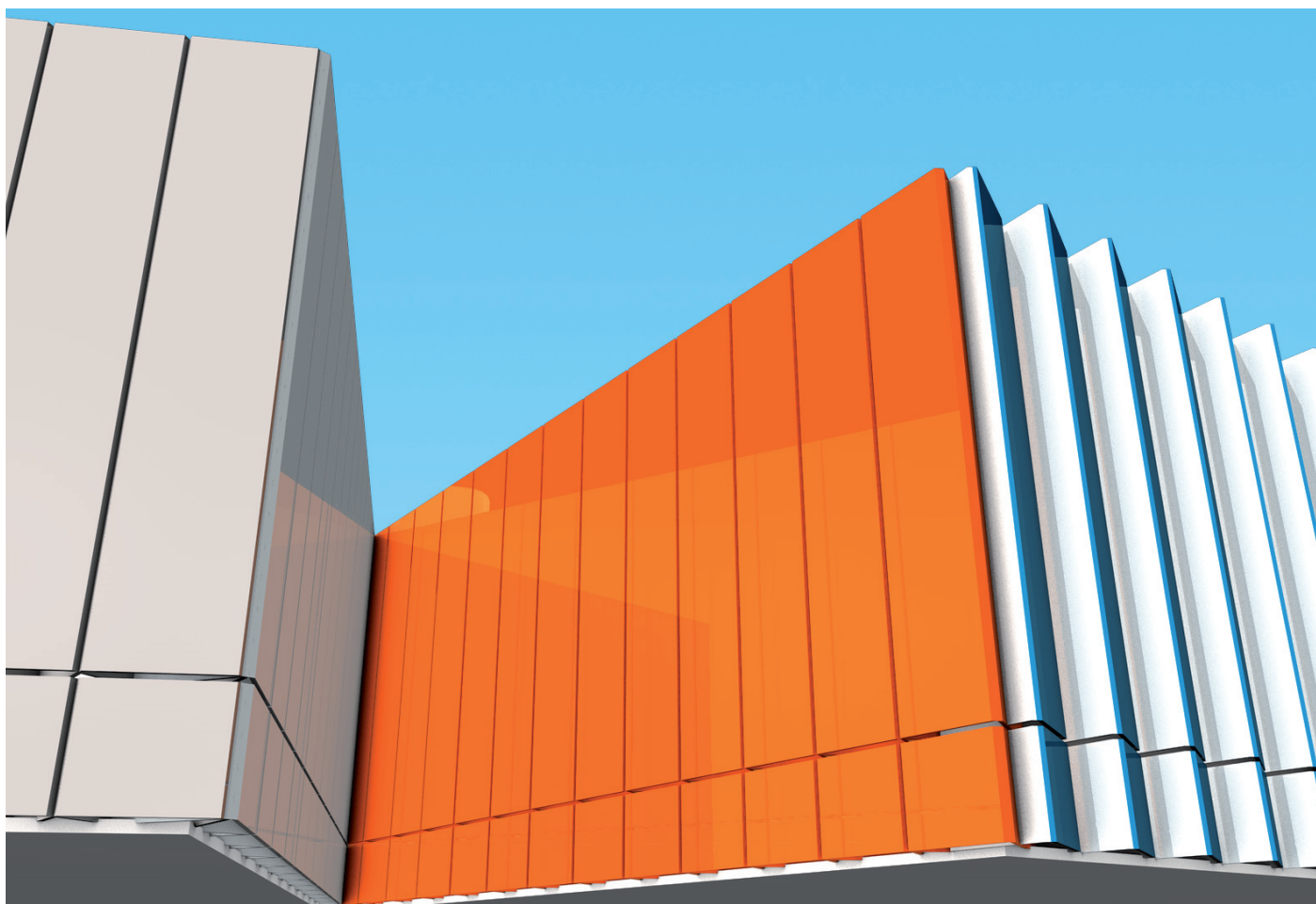


**realities:united**

Art Souq, 2008

Flying Cloud and Mechanical Facade Installation for a Temporary Art Pavillion in Khalifa Park, Abu Dhabi  
Competition Entry in Cooperation with Bjarke Ingels Group (BIG)

Renderings ©2008 realities:united | Building ©BIG



**realities:united**

Art Souq, 2008

Mechanical Facade Installation for a Temporary Art Pavillion in Khalifa Park, Abu Dhabi  
Competition Entry in Cooperation with Bjarke Ingels Group (BIG)

Renderings ©2008 realities:united | Building ©BIG



**realities:united**  
Jan Edler & Tim Edler

Foto ©2008 Annette Hausschild, OSTKREUZ