

## School Complex "Bobigny"

### DATA

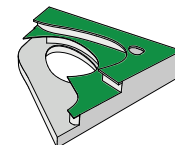
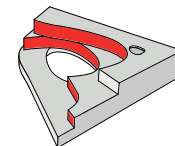
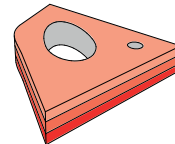
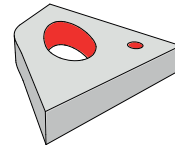
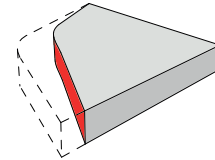
Architect	Mikou Design Studio
Location	Bobigny, France
Client	City of Bobigny
Programme	Preschool, Primary School, Recreation Centre, Cafeteria
Area	4 000 m <sup>2</sup>
Date	Completion 2012

### CONCEPT

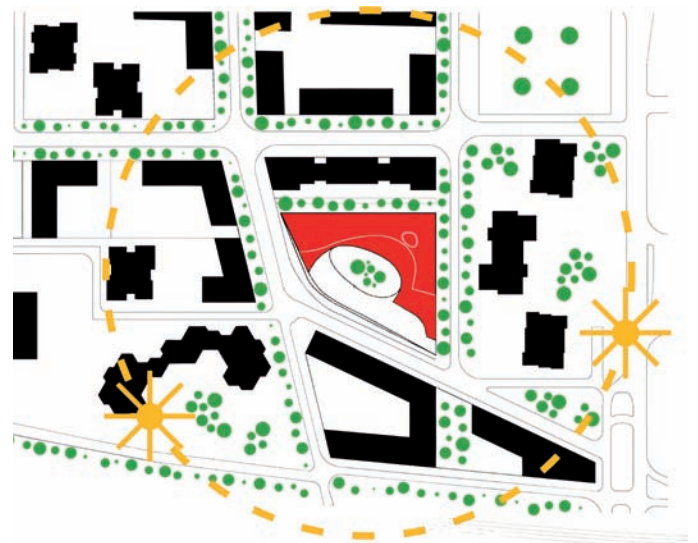
Located within a residential area in the centre of Bobigny and supporting the vision of the city's renewal, this school will become a strong landmark with a distinct presence; both visually and socially.

Designed by the existing urban layout, the ground floor forms an arch encompassing an internal courtyard while the floors above recede, allowing maximum sunlight to enter the school's playground and classrooms. The three storey front formed on the north elevation houses administrative programmes and an entrance esplanade, while its playful mosaic façade invites and shelters the school's occupants.

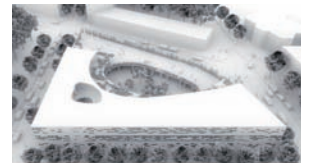
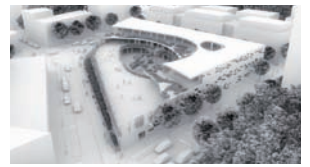
The heart of the school, its inner courtyard, finished in timber panels and glazing provides a forum where pupils of all age groups are brought together.



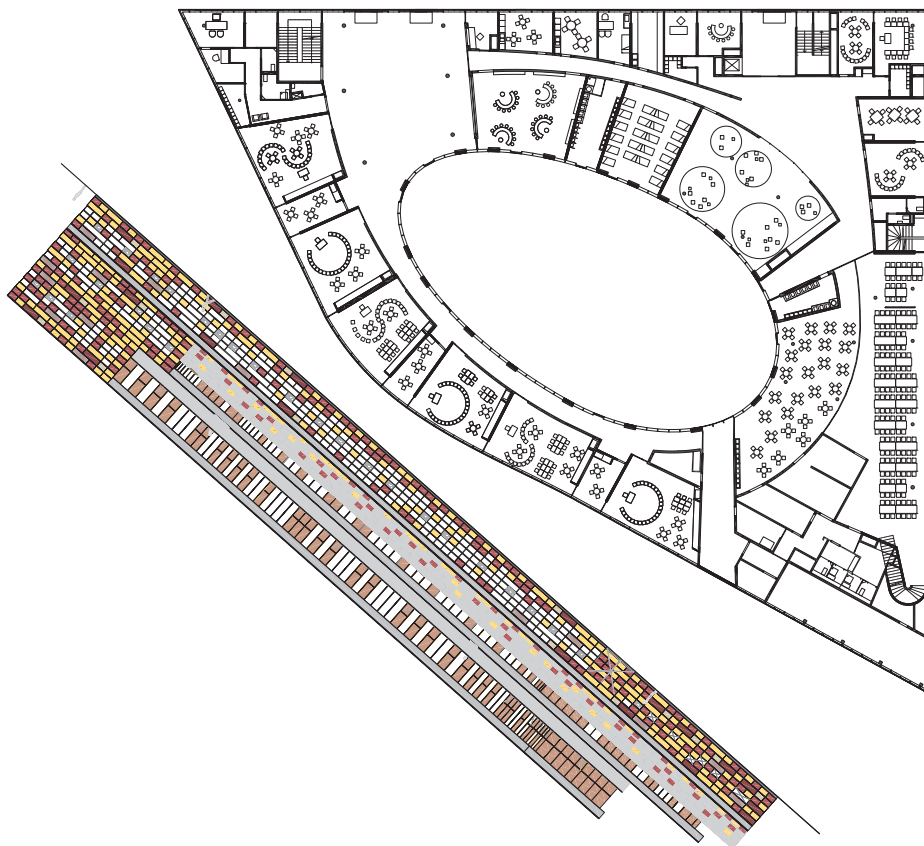
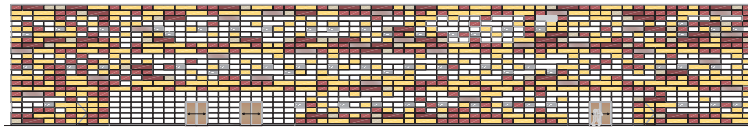
### URBAN CONTEXT



**COURTYARD**



**MOSAIC ELEVATIONS  
GROUND FLOOR PLAN**



**SECTION**





## COURT VIEWS



## BUILDING FEATURES

