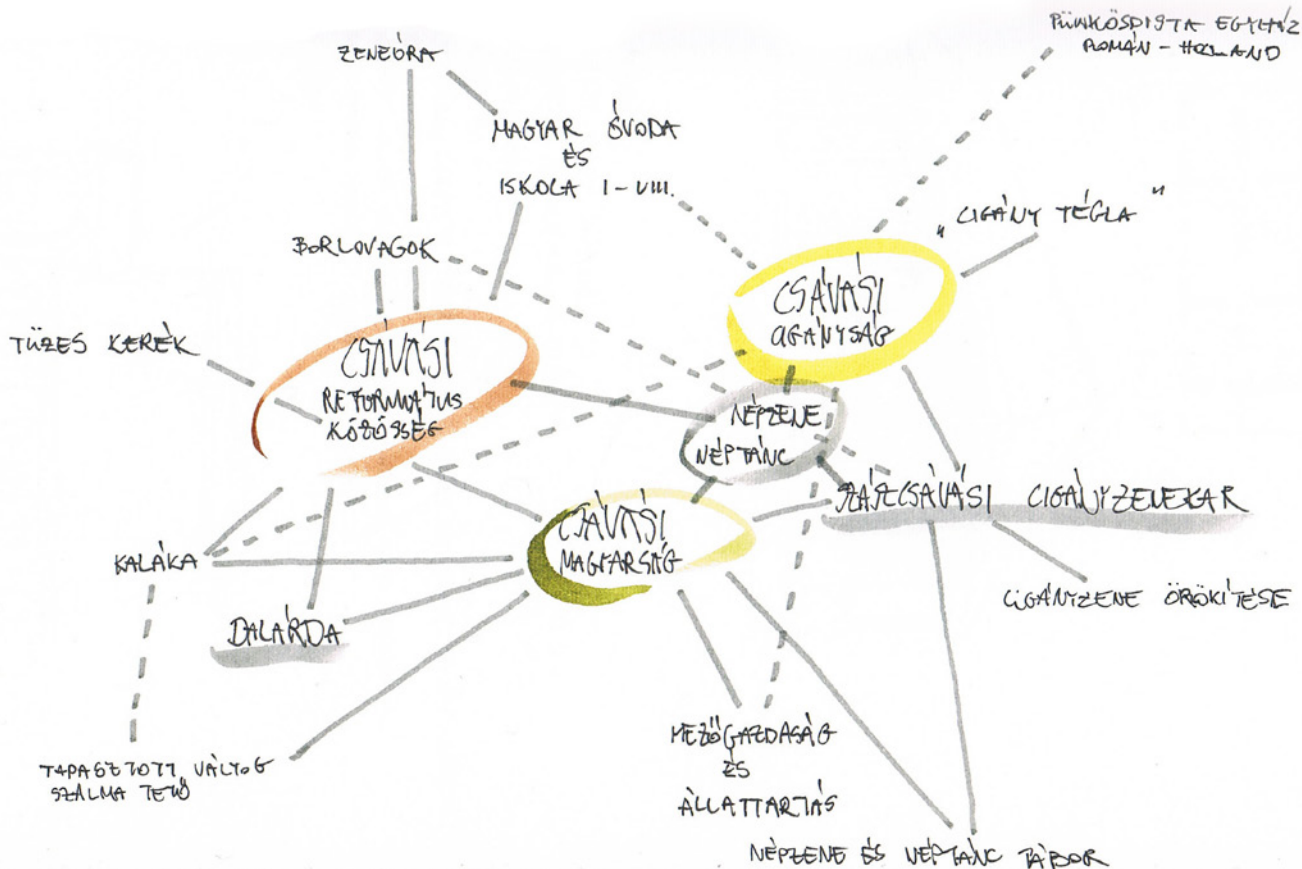
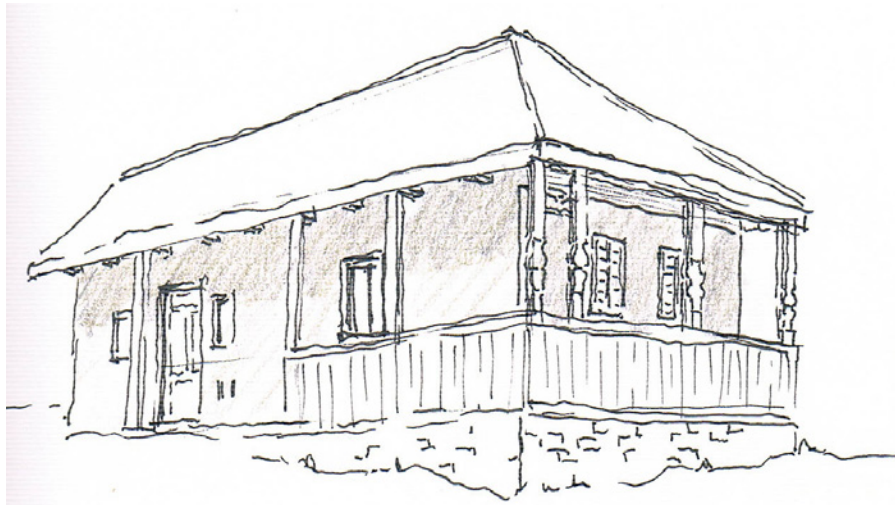
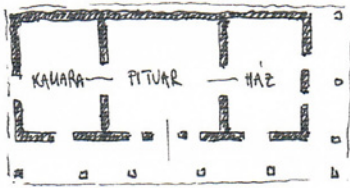


Heiter Márta Diplomajegyzetek



Csávási közösségépítő ház

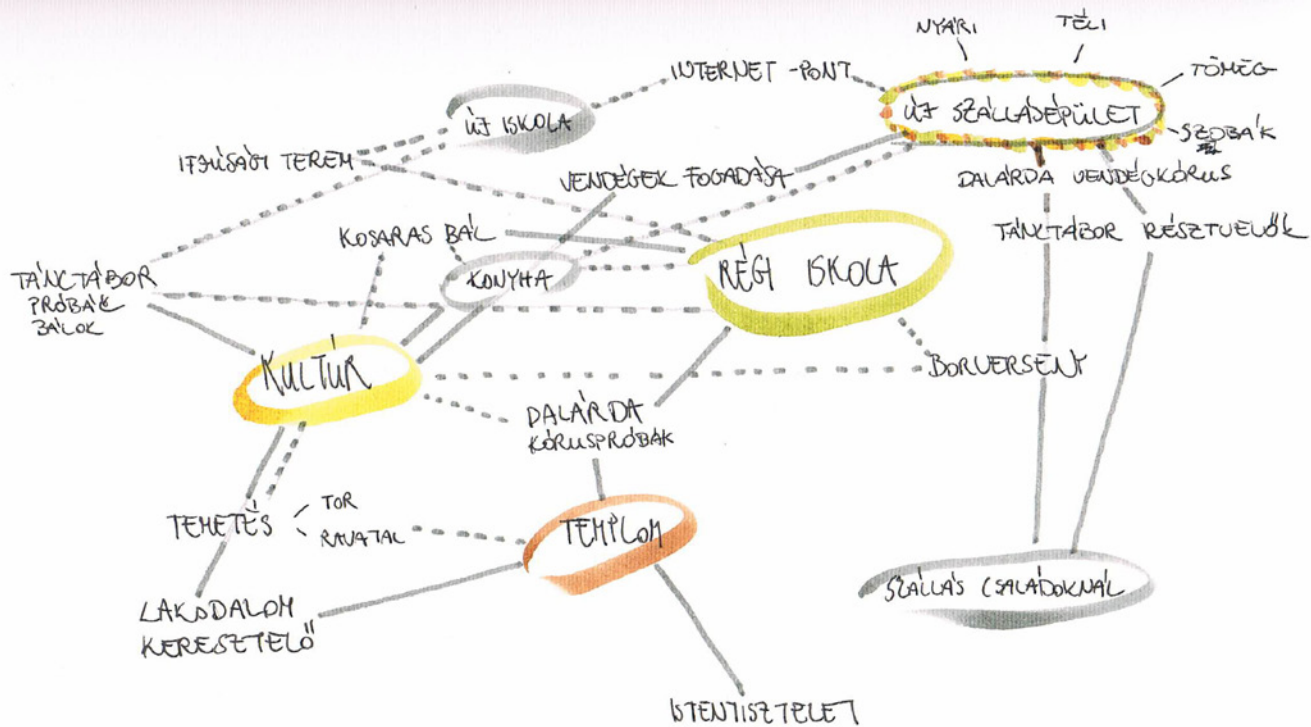












KAPCSOLATOK

KÖZVETLEN ÉRINTKEZÉS



- ⊖ TÚL HOSZSÚM VÁLIK A TÖRÉS
- ⊖ HÖMLÖKZATI ASSZIMETRİKUSSÁG VÁLIK

TEJÓVEL VALÓ KAPCSOLÓDÁS



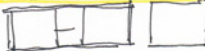
- ⊖ KONTROLLT TÉRŰZÉS NEMZÉKES CSATLAKOZÁS
- ⊖ TÖRÉSRŐL ÉS HŐSÉRŐL MARRÓ A HÖMLÖKZATI ASZIMMETRII TÉR ELLENÉRE

ÚJ ÉPÜLETREZÉS MŰVÉ ELLÁTÁSÁ

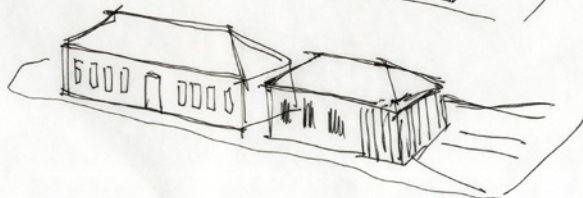
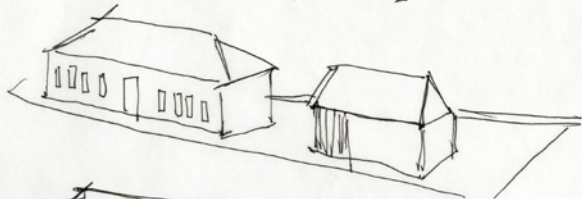
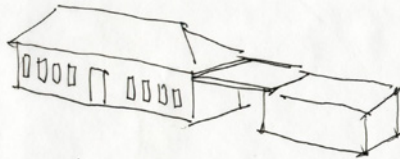
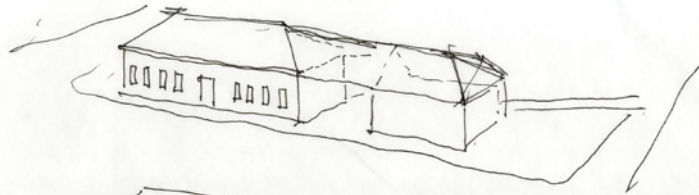


- ⊕ KÖZTES TÉR KIÁNKULÁSÁ
- ⊖ TELER STELÉRE HŰTŐDŐB, TÚL KÖZEL A TEMPLOM KERÜLETÉHEZ
- ⊖ A KÉT ÉPÜLET FÜVESZETI ~~ESZAK~~ ESZAKOS KÖZTI KAPCSOLAT

ÚJ ÉPÜLETREZÉS KIS ELLÁTÁS

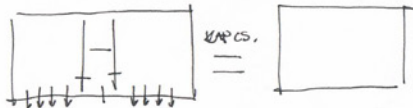


- ⊖ KÖZTES TÉR NEM ALAKUL KI
- ⊕ KIS PARK KIÁNKULÁSÁ LEHETŐSÉGES A TEMPLOMHAL VALÓ KAPCSOLAT
- ⊕ KÉT ÉPÜLETREZÉS KÖNYVESS ÉPÍTÉSIKÖZÖST



REGI: KÖZÖSSÉGI TÉR

ÚJ: SZÁLLÁS



Re közösségi tér az új épületrész

- ⊕ SZABAD FORMÁLÁSI LEHETŐSÉGEK (TERVEZÉS)
- ⊕ NYÚCS SÜKSÉGEK ÚJ MŰVÉPMŰVÉREK
- ⊕ KÖNNYŰBŐ SZABADTÉR FELÉ ÚTAK MEGVALÓSÍTÁSI LEHETŐSÉGEK

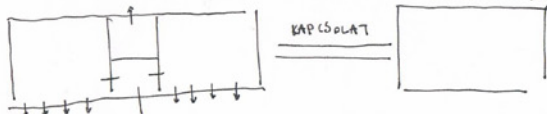
~~Re épület~~

Re szállás az új épületrész

- ⊕ SZABAD FORMÁLÁSI LEHETŐSÉGEK
- ⊕ TETŐTÉR ESETLEGES TÖMEGSZÁLLÁSSAL VAGY KIMARADÁSSAL
- ⊕ MAGASABB KÖZVETLEN SZABAD ELTARTÁSRA LEHETŐSÉGEK
- ⊖ VIGYAZNI KELL A HÉRETEKRE

REGI ÉPÜLET: SZÁLLÁS

ÚJ ÉPÜLETRÉSZ: KÖZÖSSÉGI TÉR



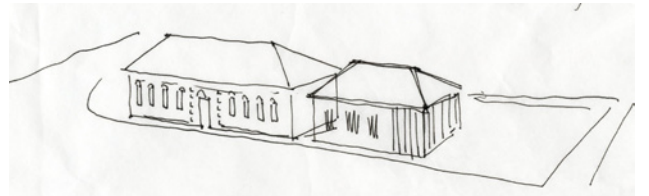
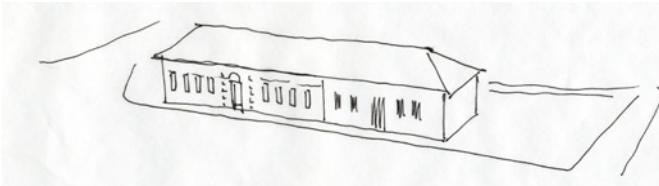
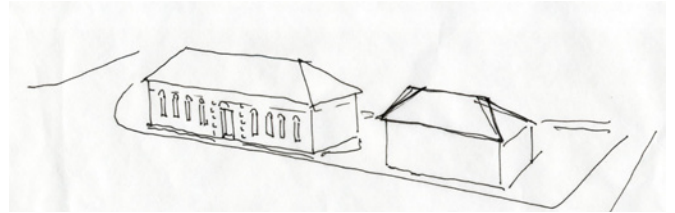
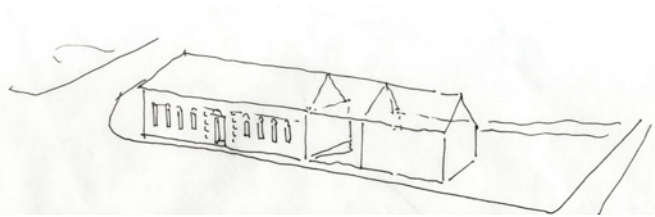
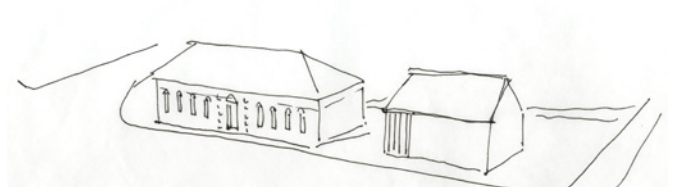
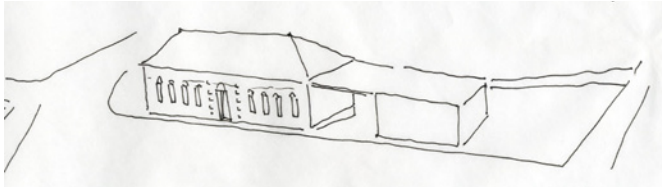
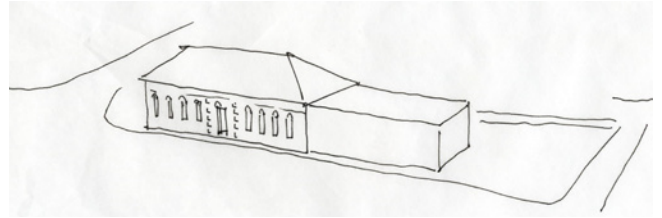
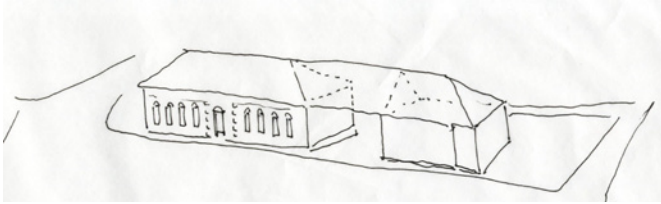
CÉL: FALU REPREZENTÁCIÓS KÖZPÜNKTEK MŰVÉPMŰVÉREK

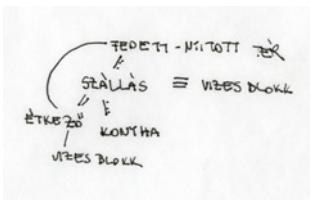
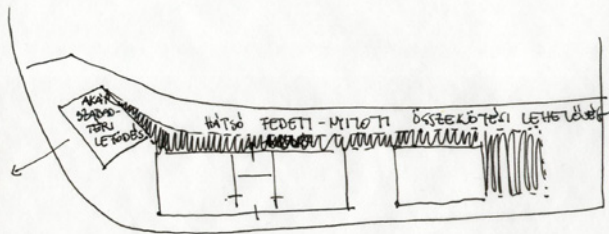
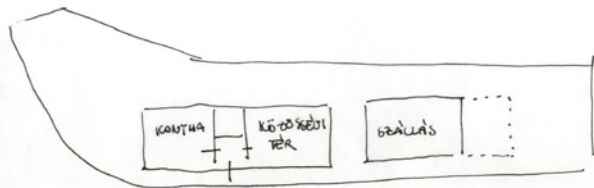
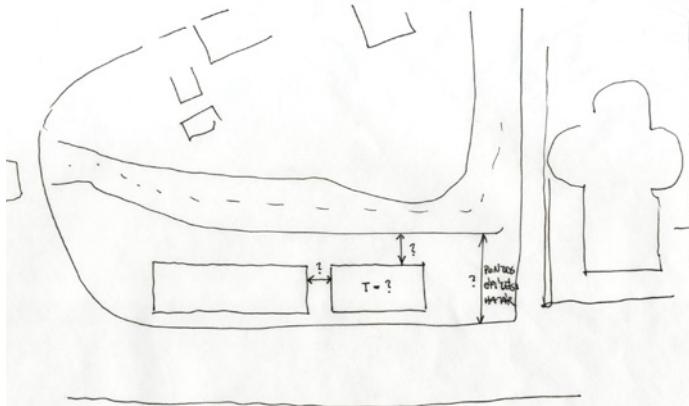
= Re szállás a régi épület

- ⊕ TÖMEGSZÁLLÁS - KÉT MAGYTEREM ALKALMAS < női > < férfi >
- ⊖ KIS SZOBÁK ⊖ BEVILÁGÍTÁSI PROBLÉMAK ⊖ FELSZÁRVAZI PROBLÉMAK
- ⊖ ESETLEGES TETŐTÉR BEÉPÍTÉS
 - ⊕ KIS SZOBÁK KÖNNYŰBŐBEN ELRENDEZHETŐK
 - ⊖ NEM NYERHETNEK MAGASABB SZÉLVONALÚ BEVILÁGÍTÁSI HELYSZÍNEKET
 - ⊖ JÁRAK ALÉKONSTRUKCIÓ NEM MEGFELELŐ
 - ⊖ TETŐ JO' ALAPOTBAN, ANNAK MEGBONTÁSA NEM CÉL

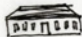


Re közösségi tér a régi épület

- ⊕ ÉPÜLETRÉSZ MEGFELELŐ MÉRTEKŰ MAGYTEREM ELÉRHEDŐ BEVILÁGÍTÁSSAL, MEGFELELŐ MEGVILÁGÍTÁSSAL
- ⊕ MÁSIK KÖZÖSSÉGI TÉR TÖBBSZÖR ÚJ FUNKCIÓT KAPHAT
 - KAVIJA
 - KISEBB KÖZÖSSÉGI TERMEK
- ⊕ LEHETŐSÉGEK KISEBB VÁZSZEKCIÓK ELTARTÁSÁRA
- ⊕ SZÁLLÁSOK KAPCSOLÓDÓ ÉRTÉKESÍTI LEHETŐSÉGEK MEGVALÓSÍTÁSA

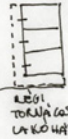




SZÁLÁS-ÉPÜLET

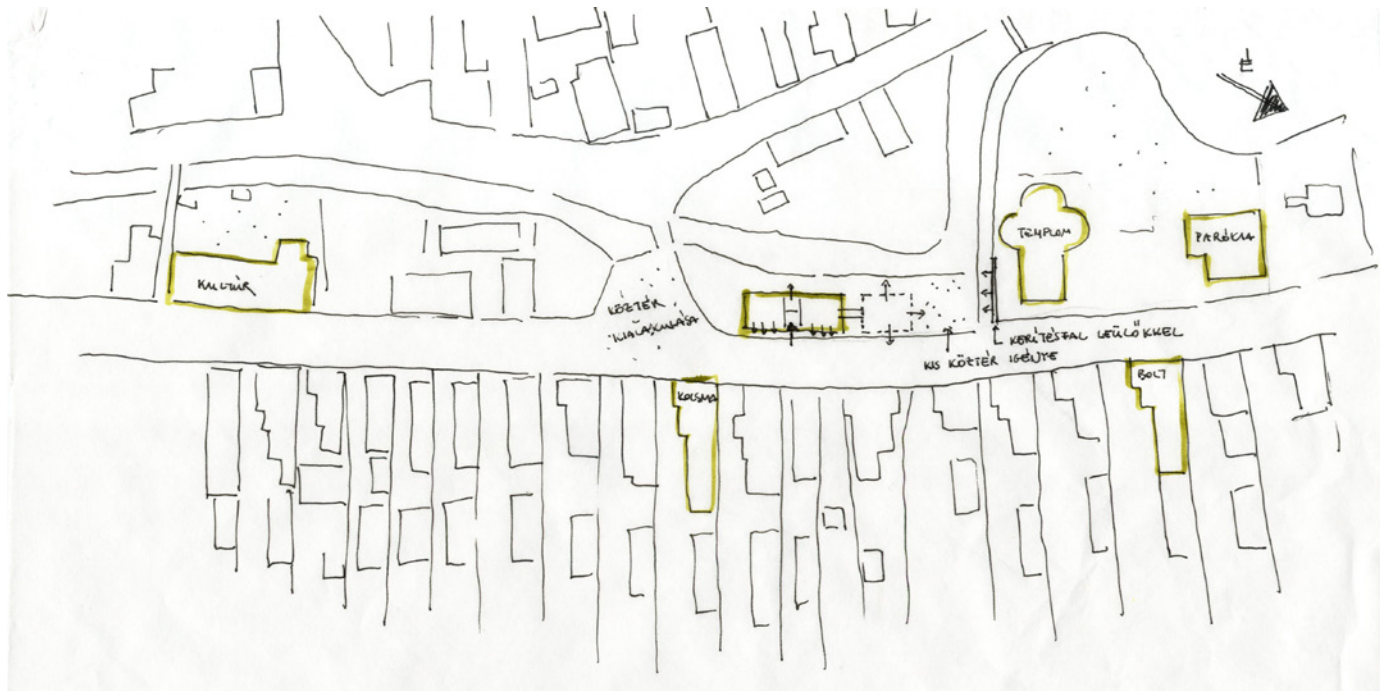
- KÖZPÖRTELTÉR - KÖZPÖRTELTÉR - ARC 
- M
- SZÁLÁS FUNKCIÓ - LAKÓHÁZ - ARC  

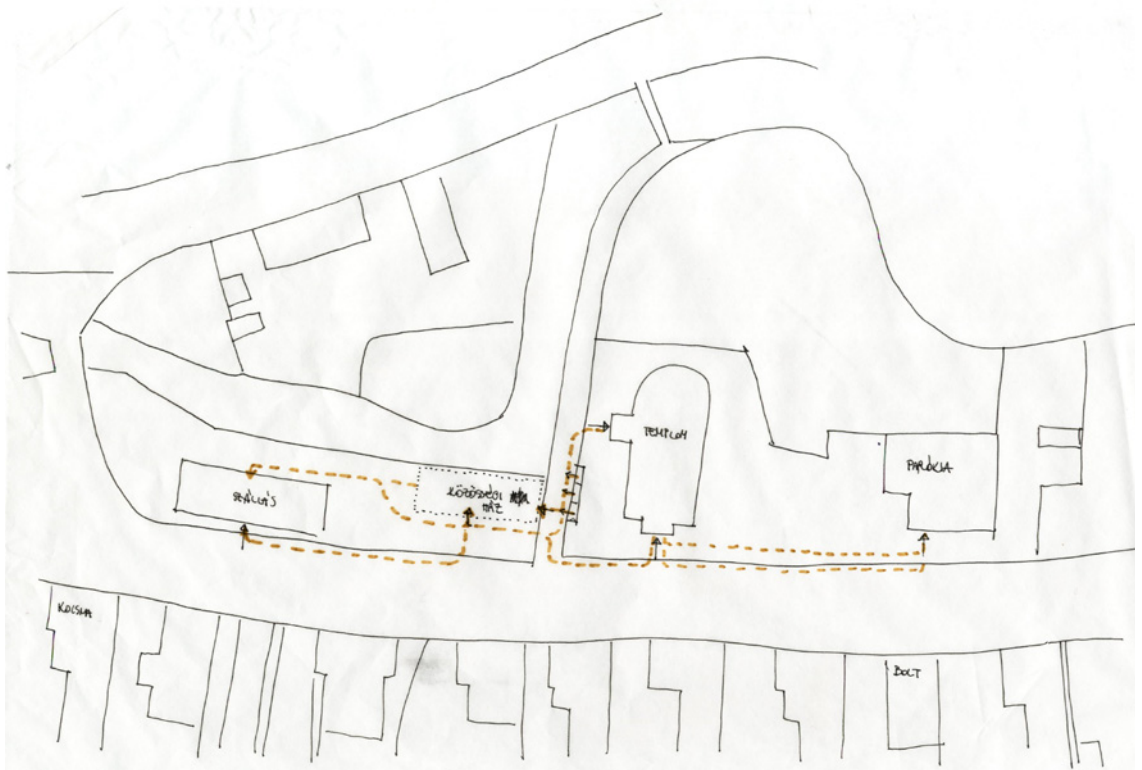
→ ELFORDULT LAKÓHÁZ ???

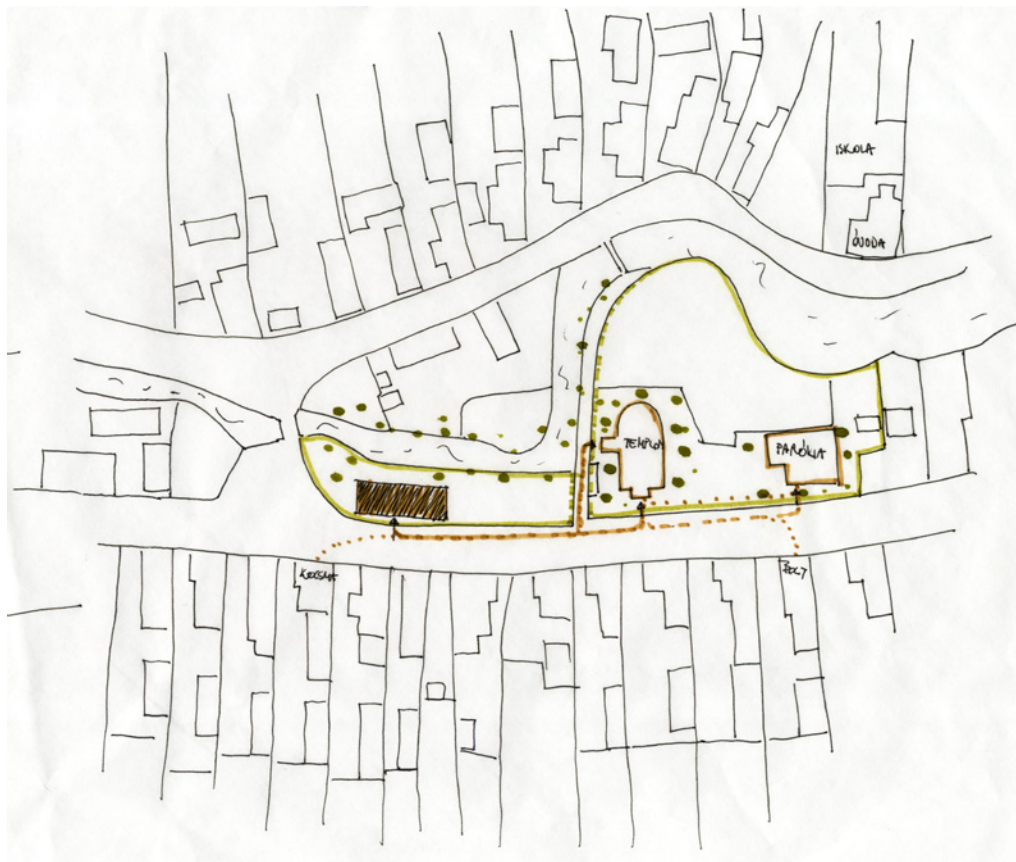


KÖZPÖRTELTÉR LAKÓHÁZ

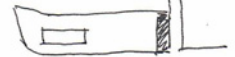
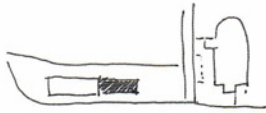
KÖZPÖRTELTÉR LAKÓHÁZ



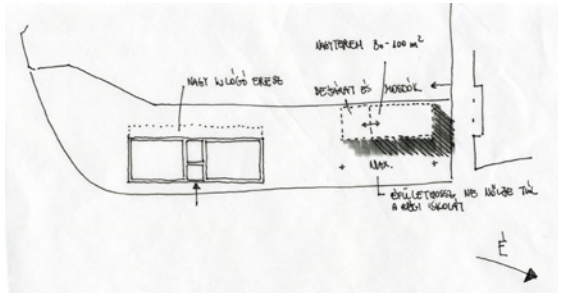
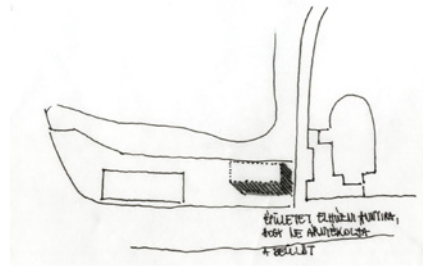
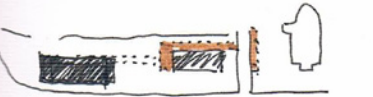
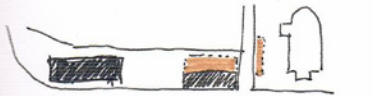
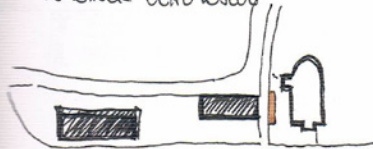


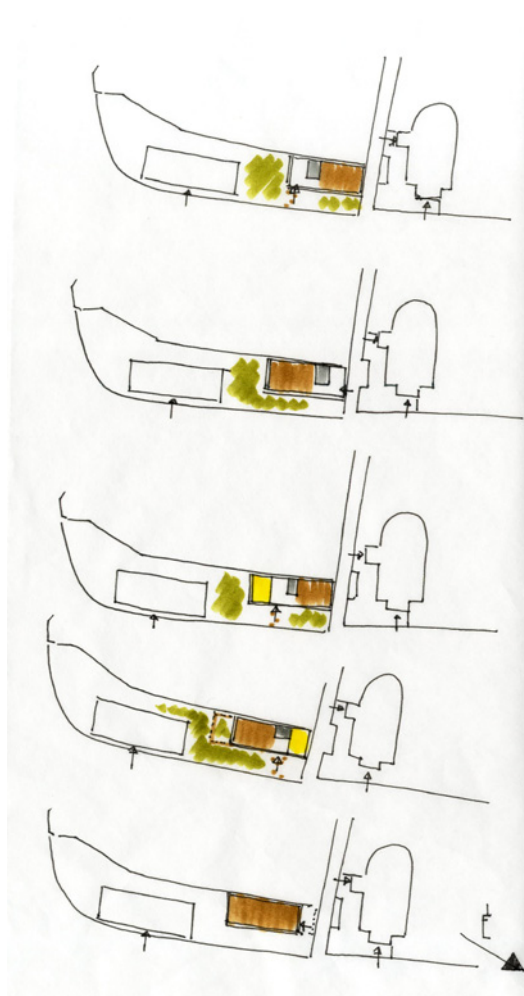
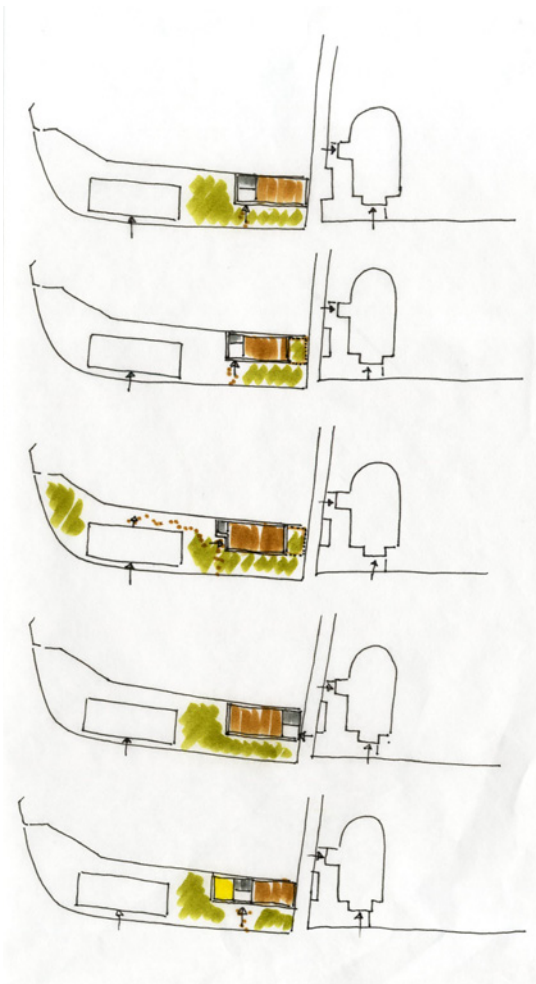


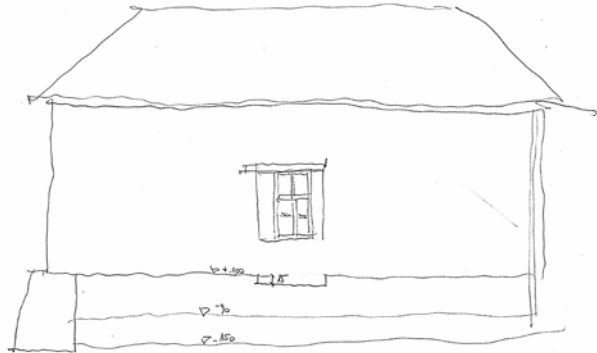
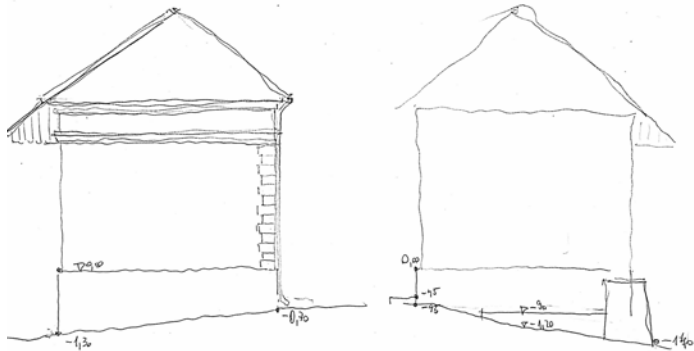
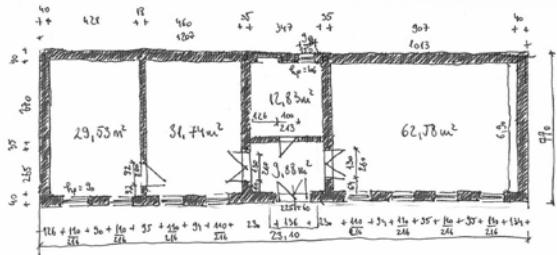
13 ÉPÜLET HELYEZKEDÉSE

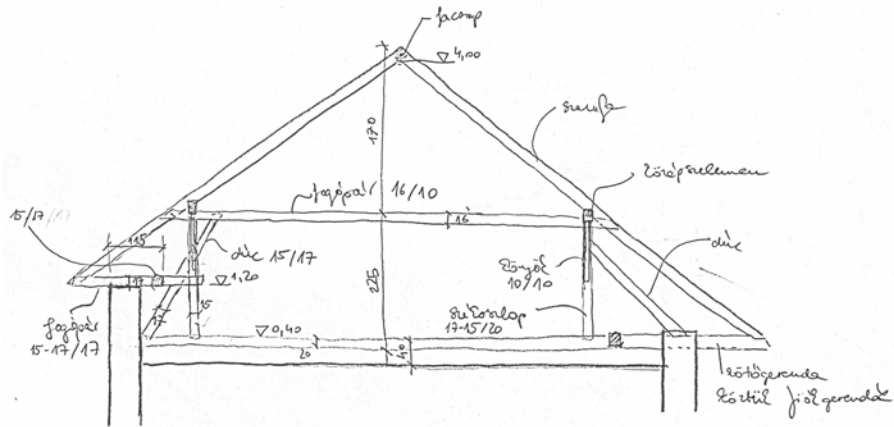
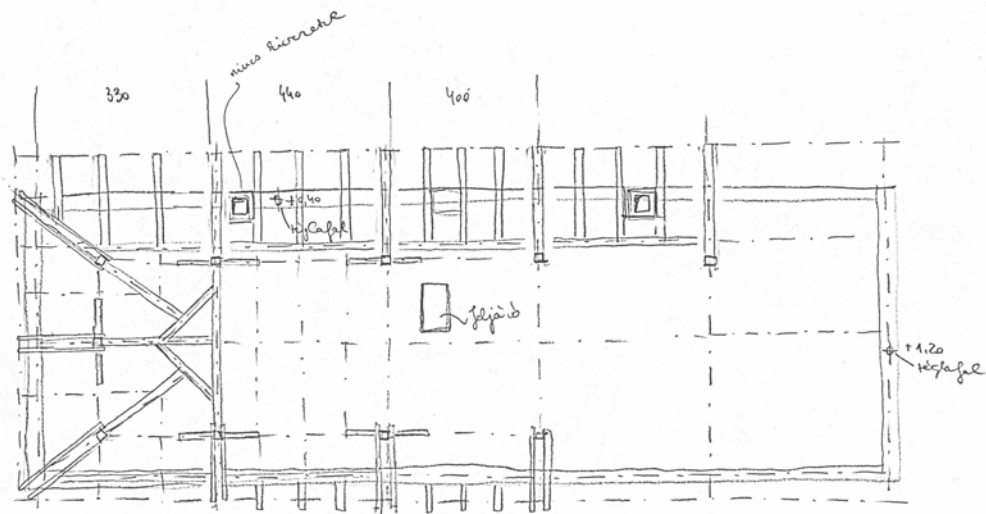


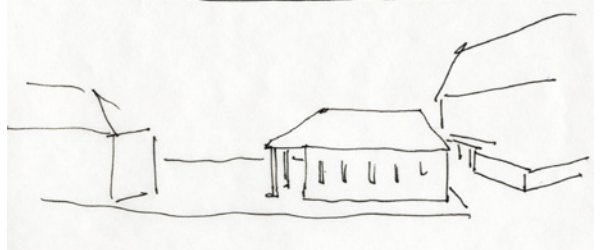
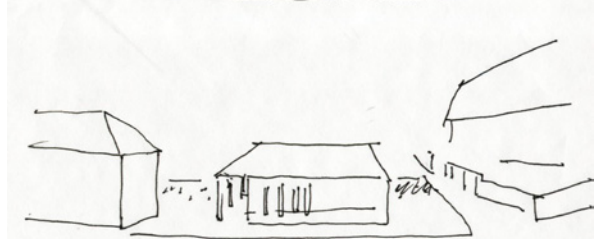
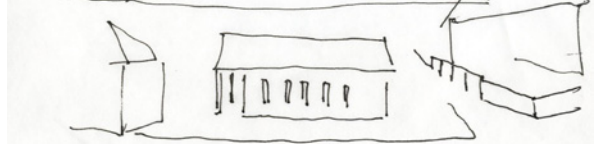
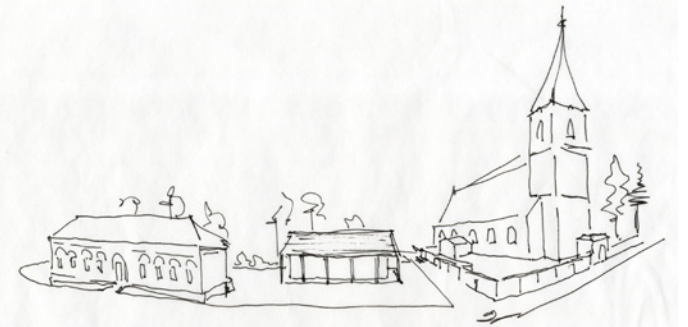
13 ÉPÜLET FEDETT - NYÍLT TEREINEK LEHETŐSÉGEI

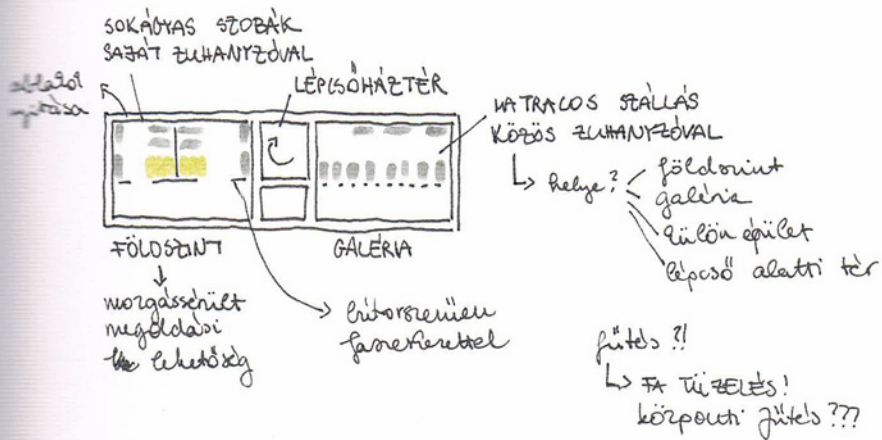


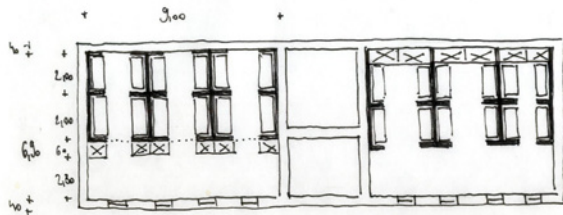






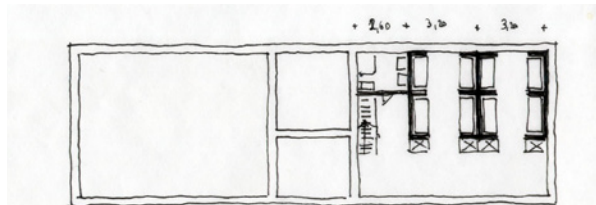






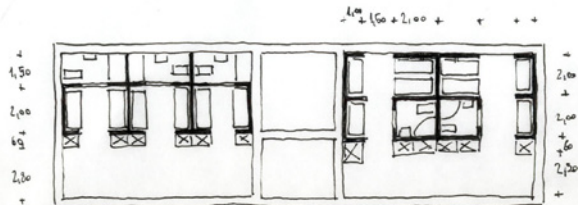
TÖRÖSSÁLLÁS

fenyelekent 24 ág + galéria
boronkent 8 ág (4 emelet)



TÖRÖSSÁLLÁS

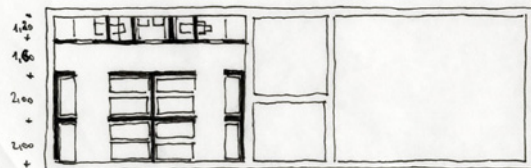
fenyelekent 16 ág + galéria
boronkent 8 ág
sziget földszel kivehető



TÖRÖSSÁLLÁS

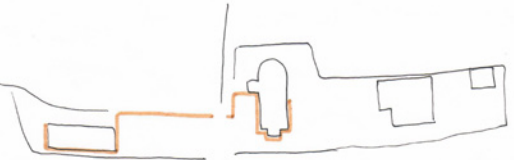
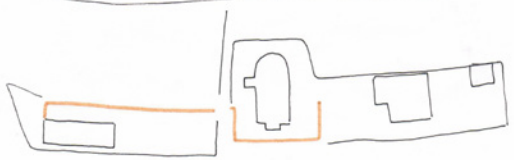
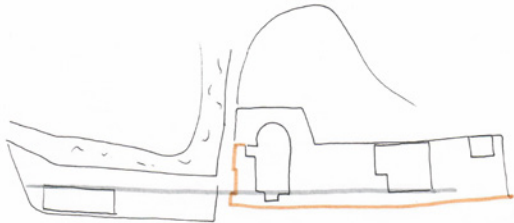
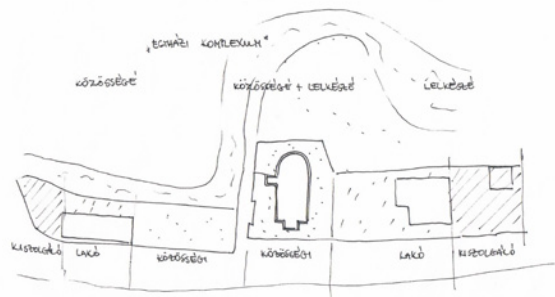
fenyelekent 12 ág + galéria
boronkent 4 ág (2 emelet)
sziget földszel boronkent

~~fenyelekent~~ fenyelekent 16 ág
boronkent 8 (4 emelet)
sziget földszel boronkent

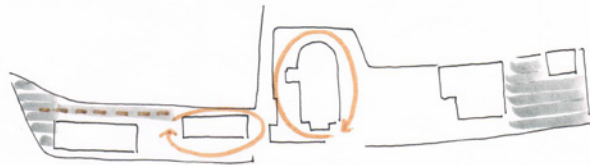
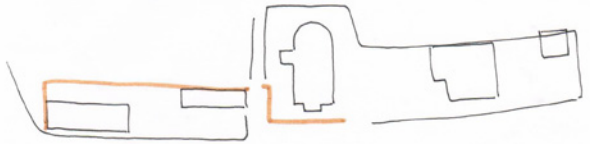
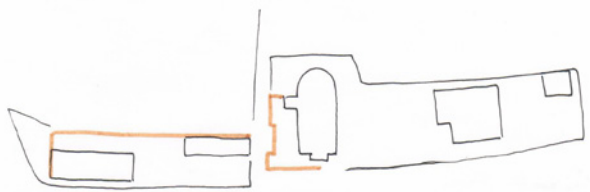


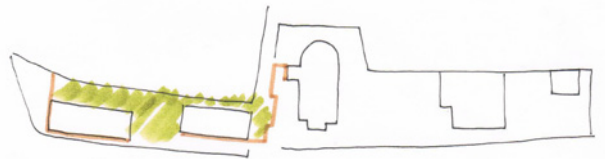
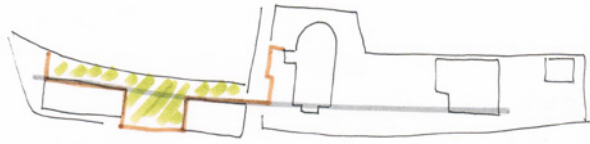
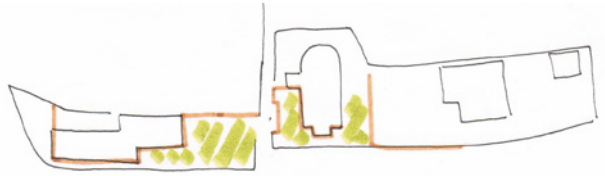
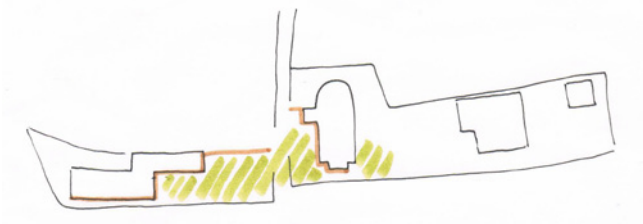
TÖRÖSSÁLLÁS

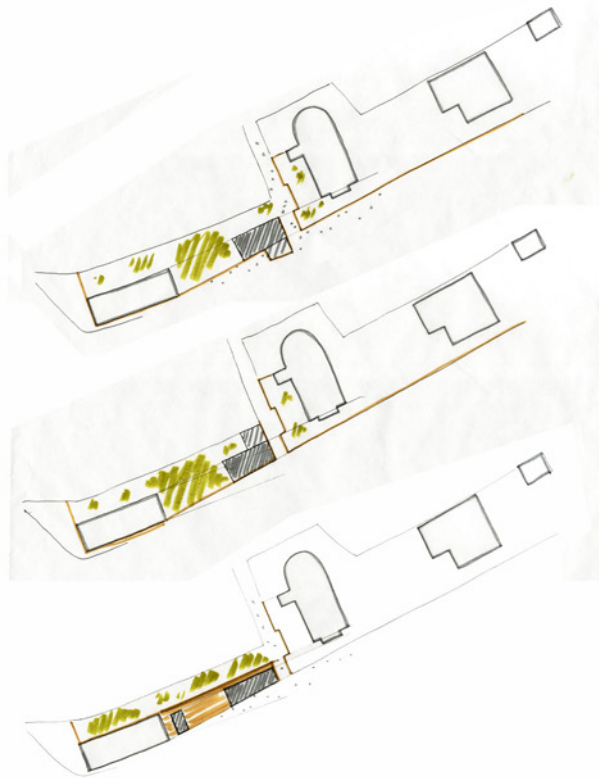
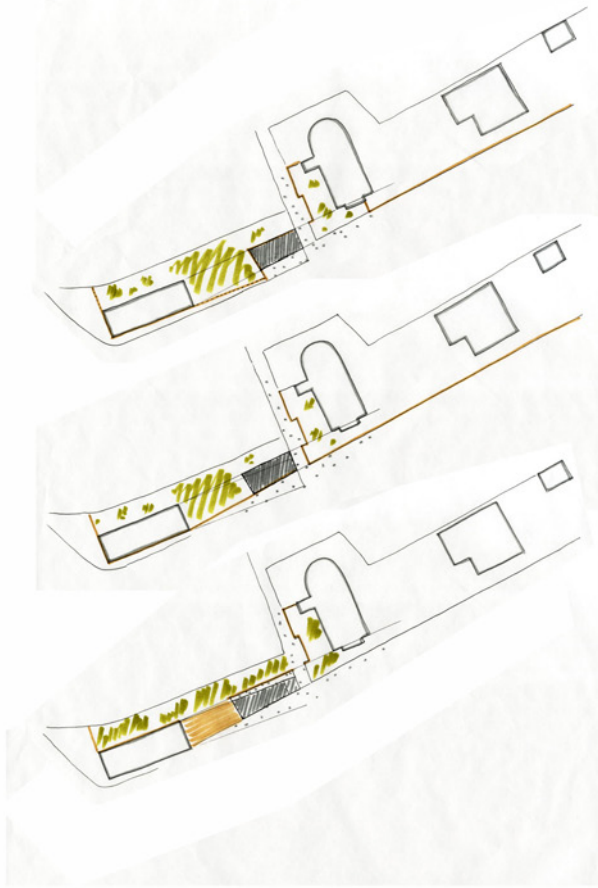
fenyelekent 24 ág + galéria
boronkent 12 ág
kötés földszel, WC-vel

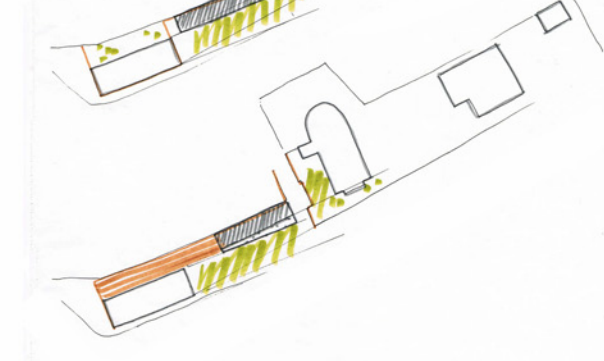
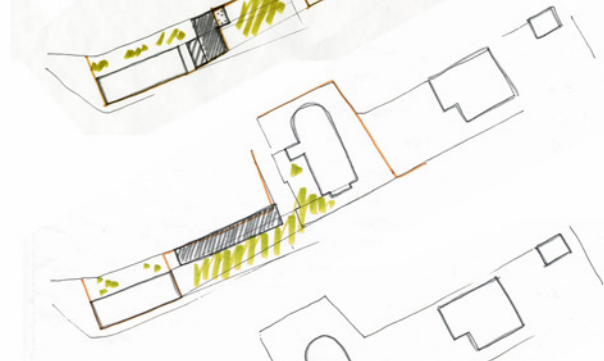
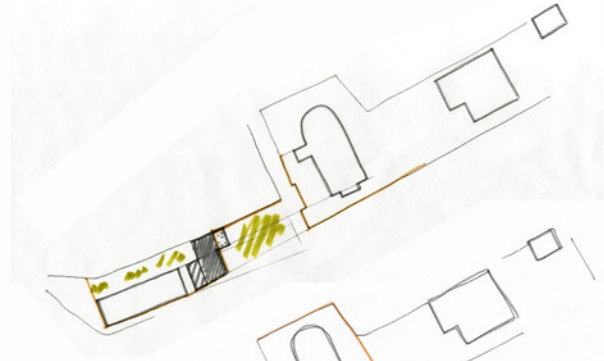
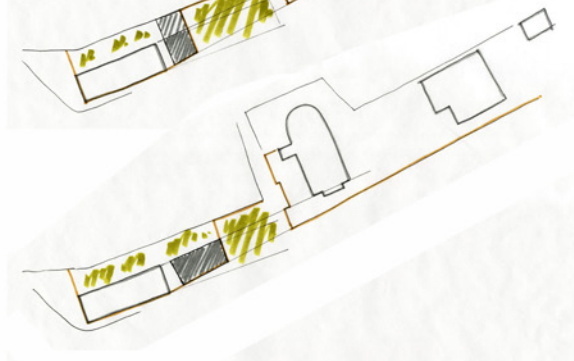
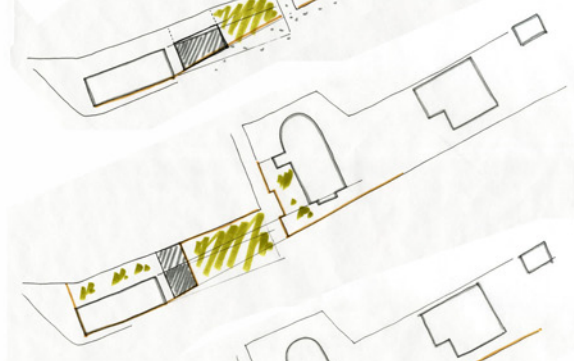
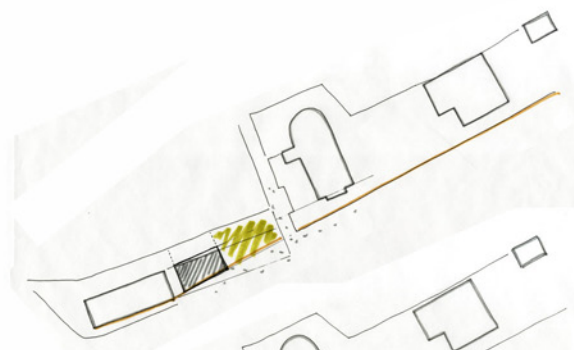


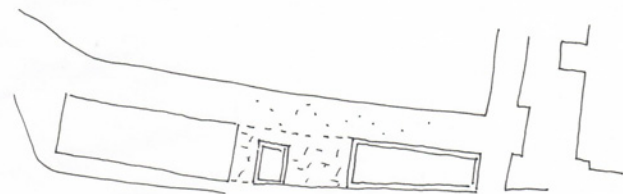
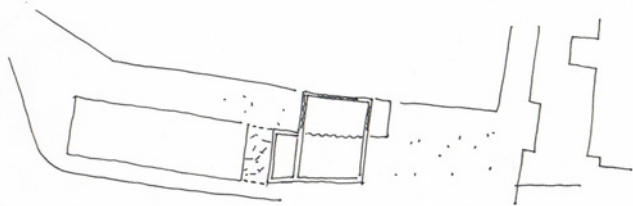
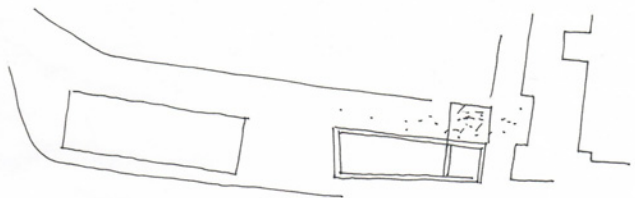
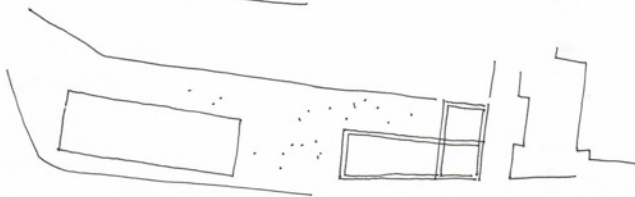
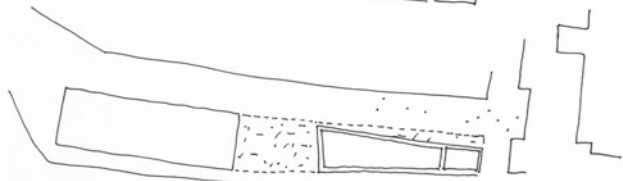
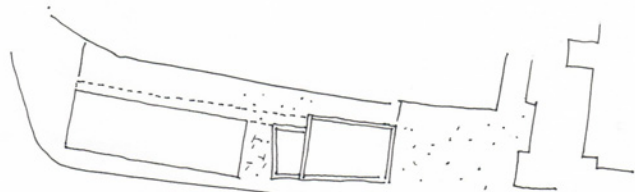
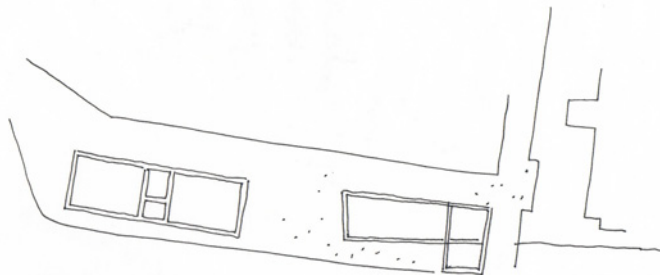
HOGYAN MUNKÁSDI KI TÖRZSAL?

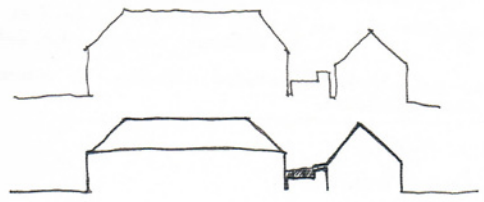
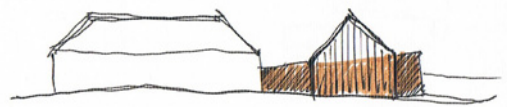
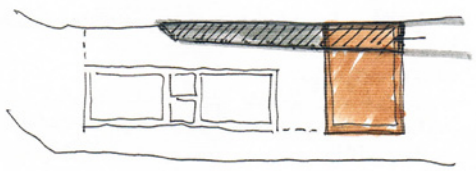
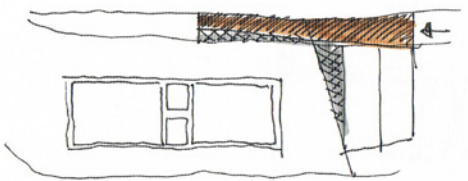
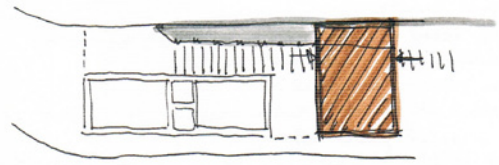
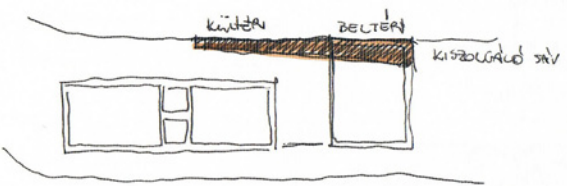
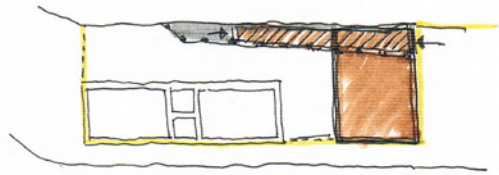
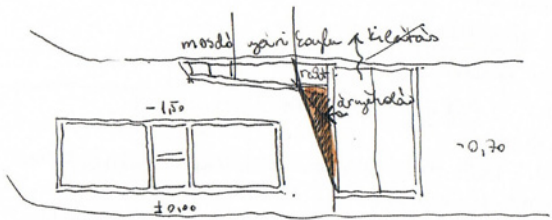


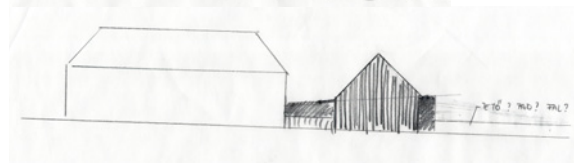
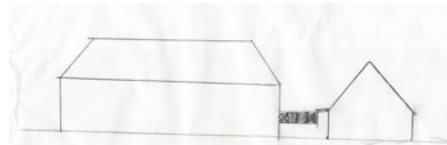
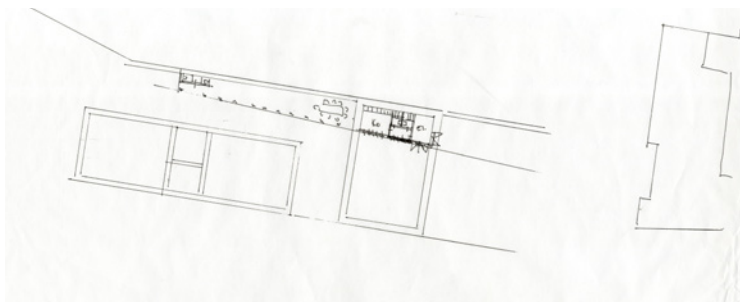
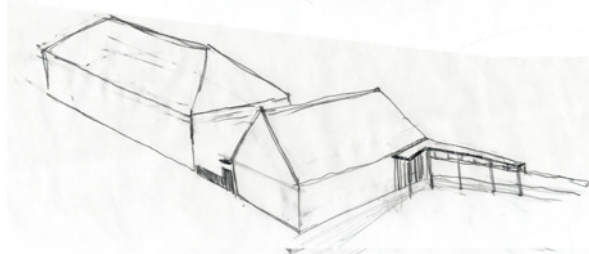
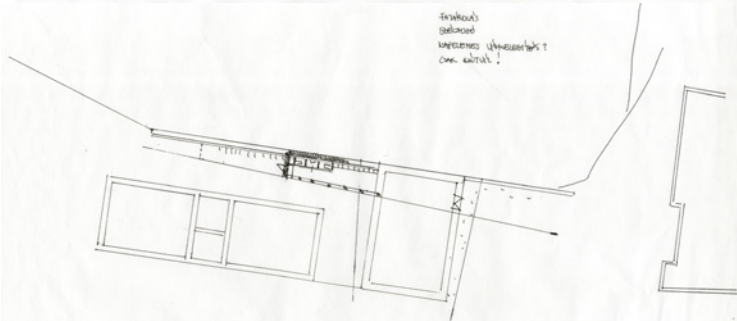
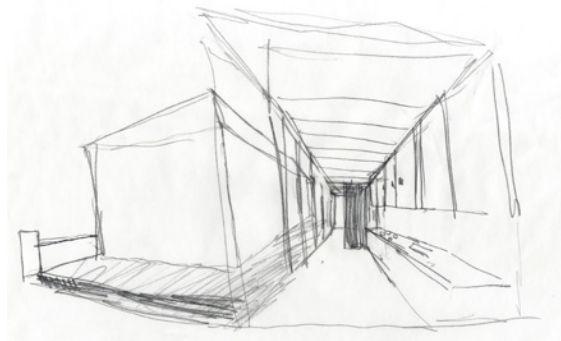
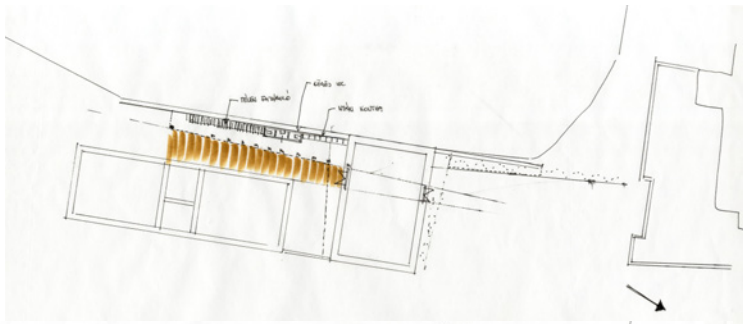


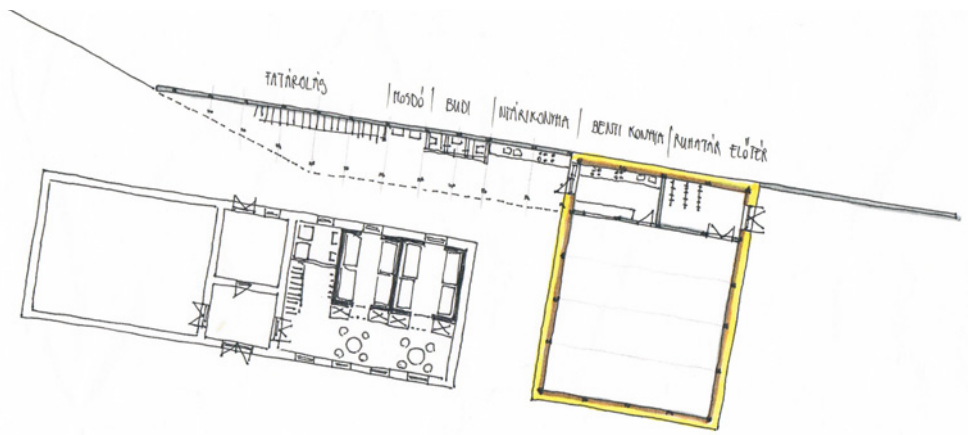




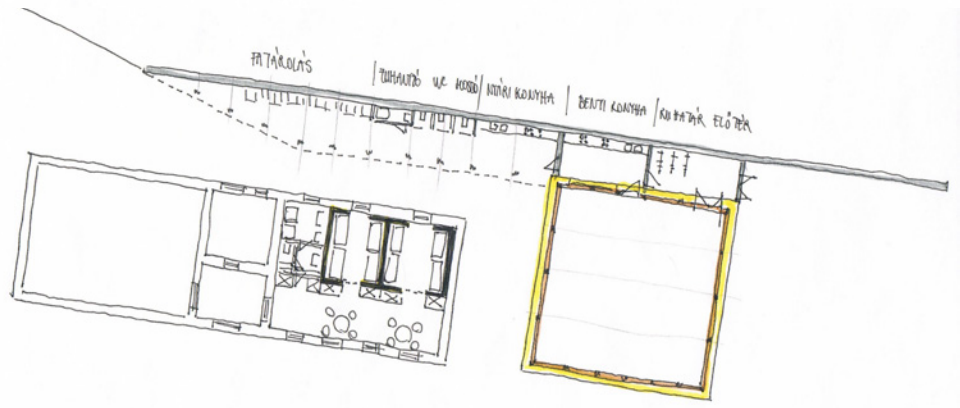




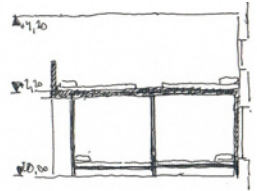




FATÁROULÁS | KOSDÓ | BUDI | NYÁRÉKÖNYHA | BENTSI KONYHA | ÁRNYALT ÉLŐTÉR



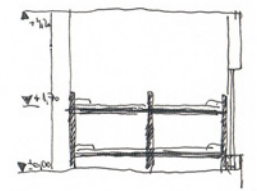
FATÁROULÁS | TÜRKAUTÓ VE KOSDÓ | NYÁRÉKÖNYHA | BENTSI KONYHA | ÁRNYALT ÉLŐTÉR



Δ+1,50

Δ+1,20

Δ+0,00



Δ+1,50

Δ+1,20

Δ+0,00

