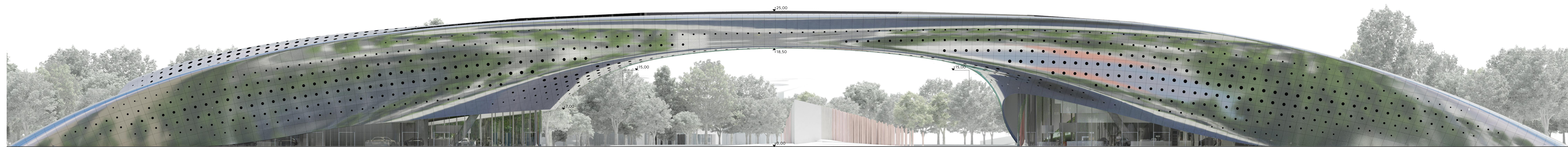


GROUND FLOOR

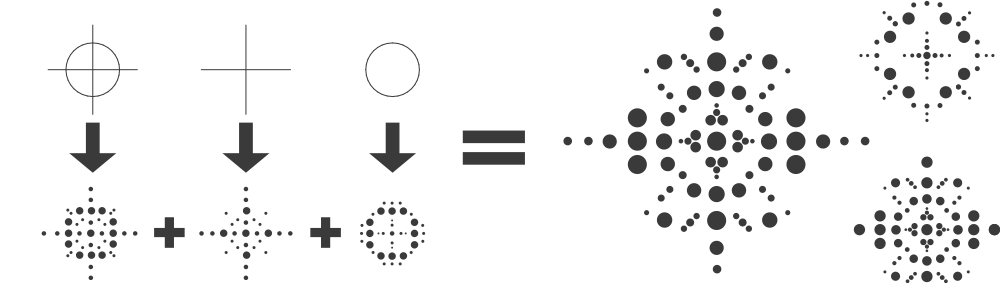
NORTHEAST ELEVATION 1/250



ABOUT THE GRAPHIC SYMBOLS

TIME AND SPACE

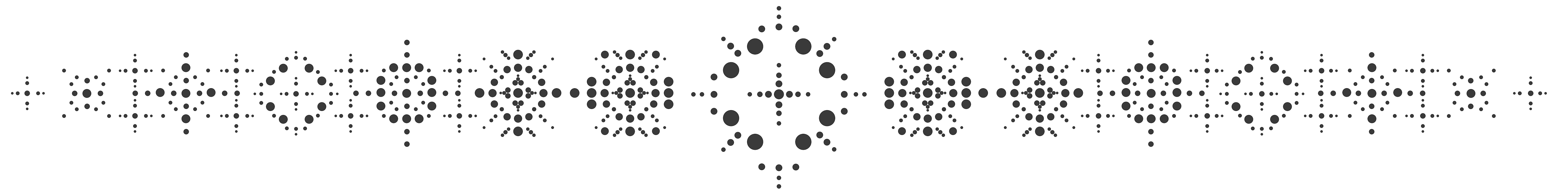
It is rather hard to depict "the" cultural aspects of different geographical regions in a simple way. One should find such a thing as a basic set of motifs that may be something in common in an array of infinite diversity.



What is the common pictorial denominator of different civilizations?

THE SUN AND THE CROSS

The most ancient ambition of humans is to define and locate him/herself in time and space. Two intersecting straight lines are one of the oldest painted gestures in human history. Man divides up space with two axes and he regards the point of intersection as his position in the world. He perceives time by the course of the Sun. It is no coincidence that two basic elements of visual arts are the coordinate system (namely the cross) and the circle, that stands for the Sun, the Globe where we live, and the endless universe at the same time. These two symbols appear in a great deal of art motifs of the world. The cross and circle combination, the ancient Sun symbol sign-archetype is appropriate to express the special function of the building in a spiritual and intellectual way. The perforation of the outer skin of the building inspires the graphic logic of the series of sun symbols in the paving.



GROUND FLOOR 1/250

