

# SH-IT - SHELTER ITALY


A HOUSE FOR THE FORGOTTEN VICTIMS OF THE ECONOMIC DOWNTURN

International  
Design  
Competition

FAKRO  
*inspires*  
space for  
new visions

CA770N1A

1/4



**SH-IT IS A SOCIAL AIMED PROJECT TO PROVIDE WORK & LIVE UNITS WITH THE RECOVERY OF THE AIAZZONE FURNITURE CITY IN BIELLA, NORTH ITALY. THESE UNITS WOULD BE GIVEN TO THOSE ITALIAN FAMILIES THAT, AFFECTED BY THE ECONOMIC CRISIS, HAVE LOST WORK AND HOMES. IT IS ALL ABOUT GIVING A SECOND CHANCE. TO THESE FORGOTTEN PEOPLE AND TO THIS MASSIVE INDUSTRIAL MONSTER.**



# THE RECOVERY OF THE FURNITURE CITY COULD CREATE 180-250 WORK AND LIVE UNITS THOSE GONE THROUGH DIRE STRAITS MAY FIND HERE THE CHANCE OF A FRESH NEW START

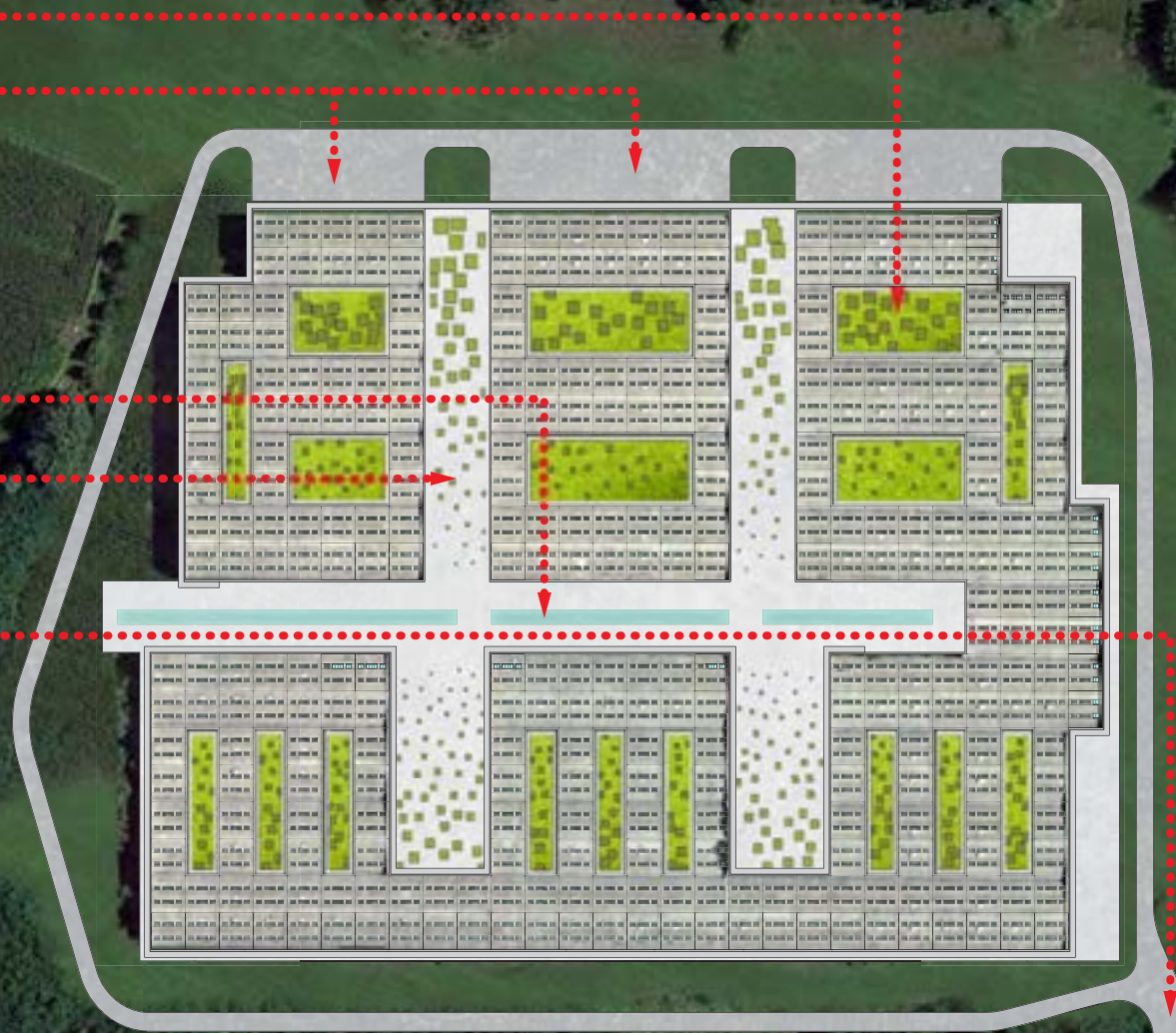
INTERNAL COURTYARDS

LOADING BAYS

MAIN BOULEVARD

SECONDARY BOULEVARDS

COMPOUND ENTRANCE



SINCE THE BEGINNING OF THE 2008 FINANCIAL CRISIS, ITALY IS GOING THROUGH A TOUGH RECESSION. MANY SELF-EMPLOYED AND SMALL ENTREPRENEURS HAVE LOST THEIR JOBS AND COMPANIES. THOSE WHO COULDN'T FIND ANOTHER EMPLOYMENT HAVE FACED HUGE DEPTS AND LOST THEIR HOMES. THERE ARE CURRENTLY HUNDREDS OF FAMILIES FORCED TO LIVE IN THEIR CARS OR IN GARAGES. IN SOME CASES PEOPLE TOOK THEIR OWN LIVES. AT THE SAME TIME, YOUNG PEOPLE WHO ARE NOT ABLE TO FIND A JOB HAVE VERY LITTLE POSSIBILITY TO MOVE OUT FROM THEIR PARENTS' PLACE. THEREFORE THEY HAVE GREAT DIFFICULTIES IN STARTING THEIR OWN FAMILIES. MANY PREFER TO EXPATRIATE ABROAD TO FIND A BETTER OPPORTUNITY. IN BOTH CASES VERY LITTLE HAS BEEN DONE BY THE PUBLIC INSTITUTIONS TO HELP PEOPLE TO OVERCOME THESE PROBLEMS, GENERATING HUGE SOCIAL PROBLEMS.



NOT FAR FROM THE ALPS THERE IS A PREFABRICATED MONSTER, THE REMAINS OF WHAT WAS PLANNED TO BE A LARGE FURNITURE SHOWROOM AND FACTORY: THE AIAZZONE FURNITURE CITY. PLANNED AND BUILT AT THE BEGINNING OF THE '80S, IT WAS NEVER USED FOLLOWING THE PREMATURE DEATH OF THE COMPANY'S FOUNDER, GIORGIO AIAZZONE. ITS SPACES WERE SUB-RENTED TO OTHER COMPANIES AND THEN ABANDONED. NETHERLESS, IT HAS BEEN ILLEGALLY USED SINCE BY HOMELESS, PROSTITUTES, FOR SHEEP RECOVERY AND A RAVE PARTY.

TODAY, DESPITE THIRTY YEARS OF ABANDONEMENT, THE PREFABRICATED BUILDINGS ARE STILL IN GOOD CONDITIONS.



THE COMPLEX IS A PRIVATE PROPERTY, IT IS FENCED AND PATROLLED. NO VISITS ARE ALLOWED AT ANYTIME. THESE PICTURES ARE TAKEN FROM ARCHIVED NEWSPAPER ARTICLES.



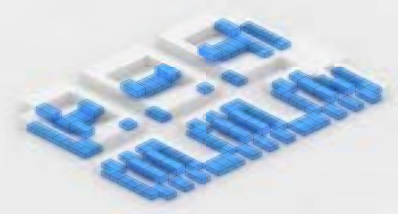
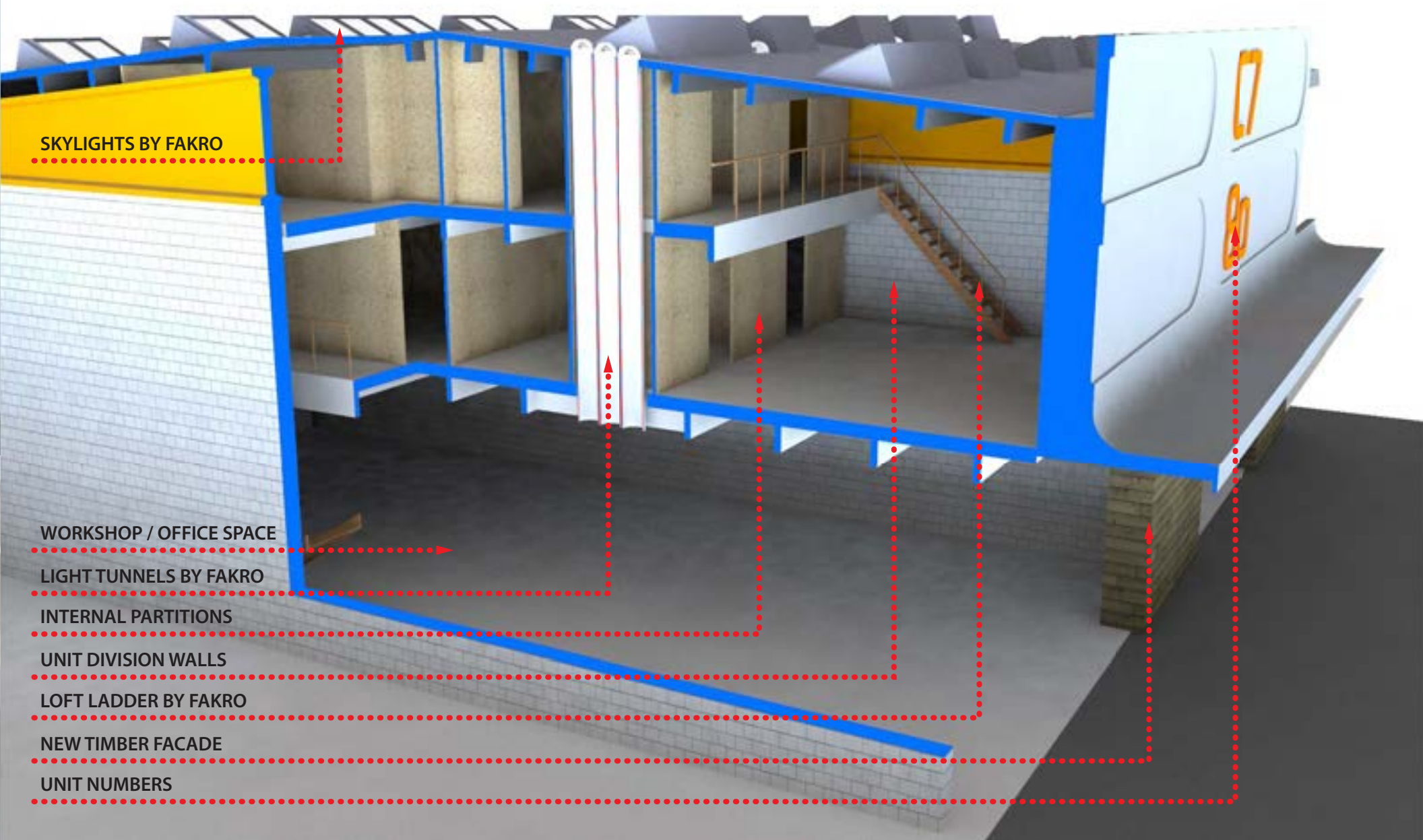
**THE ORIGINAL SERVICE ROUTES CROSS PENETRATE THE BUILDINGS AND CREATE AN INTERESTING SHAPED SPACE. THIS CAN BE CONVERTED IN PUBLIC AREAS, WHICH WILL ATTRACT POTENTIAL CLIENTS FOR THE LOCAL COMPANIES AND CREATE A SENSE OF COMMUNITY AMONG THE INHABITANTS.**



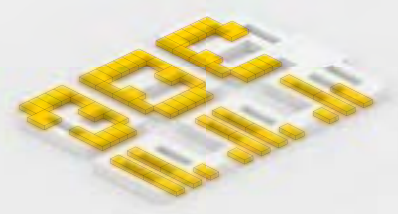
SH-IT AIMS TO CONVERT THESE GIANT INDUSTRIAL RUINS INTO 180-250 WORK AND LIVE UNITS. THESE WILL HAVE DIFFERENT SIZES, FUNCTIONS AND USERS. THE BUILDINGS ARE STRUCTURED ON A 10 BY 20 METRES GRID. THE INTERNAL SPACES HAVE ENOUGH CEILING HEIGHT FOR THREE-LEVELS UNITS. THE W&L UNITS WILL HAVE SPACE FOR OFFICES, ARTISANAL LABORATORIES OR SMALL PRODUCTION LINES AT GROUND FLOOR. LIVING AREAS WILL BE LOCATED ABOVE AND WILL FEATURE DOUBLE HEIGHT SPACES AND NATURAL LIGHT PROVIDED BY SKYLIGHTS. LIGHT TUNNELS WILL BE USED TO PROVIDE NATURAL LIGHT TO INNER GROUND FLOOR AREAS. THE USERS WILL BE GIVEN WITH THE BASIC NEEDS FACILITIES TO START/RESTART THEIR LIVES. ONCE THEY HAVE REGAINED THEIR ECONOMIC STABILITY IT WILL UP TO THEM TO LEAVE THE COMPLEX OR DECIDE TO STAY AND IMPROVE IT.

**THE COMPLEX WILL ALSO ACT AS A DISPLAY WINDOW TO ATTRACT CLIENTS OR INVESTORS, INTERESTED IN PURCHASING THE PRODUCTS OR SERVICES GENERATED HEREBY.**

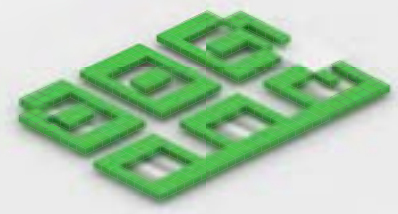




OFFICE / TECH



PRODUCTIVE / ARTISANAL



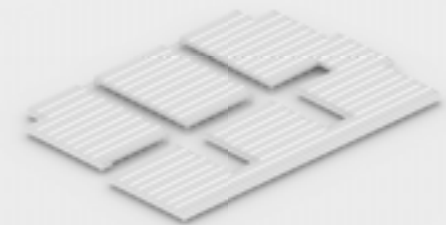
RESIDENTIAL



COMMUNITY CENTRE



FOOD & BEVERAGE



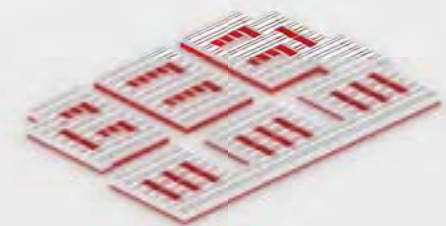
0 - THE EXISTENT COMPOUND



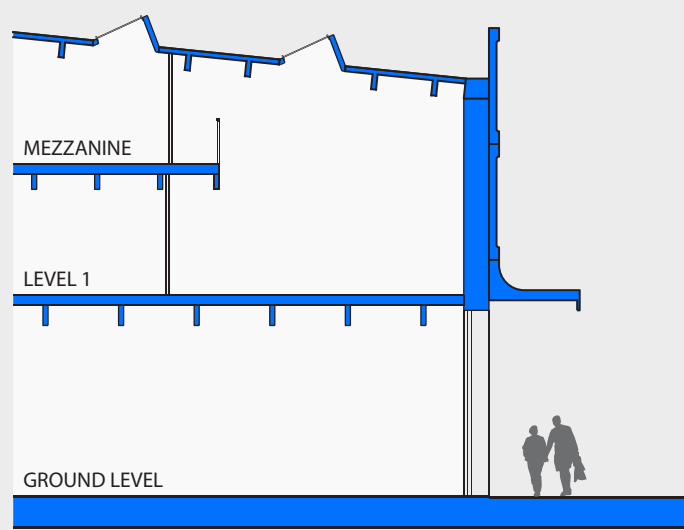
1 - SELECTIVE REMOVAL OF ROOF PARTS



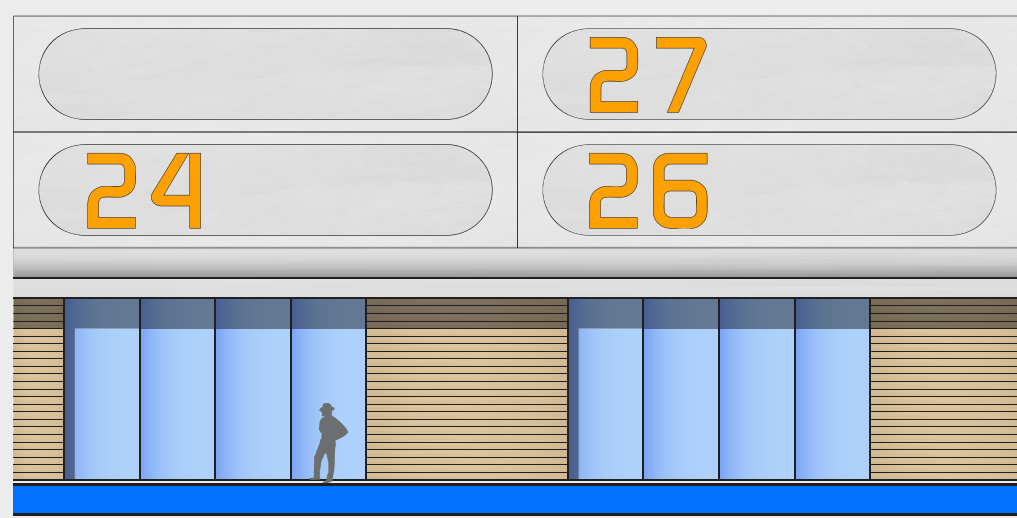
2 - DIVISION INTO SMALLER UNITS



3 - SHELL & CORE



TYPICAL WORK & LIVE SECTION



FACADE MOCK-UP