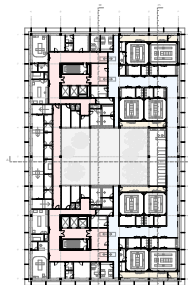
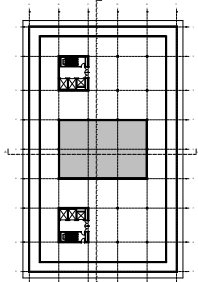


VI.

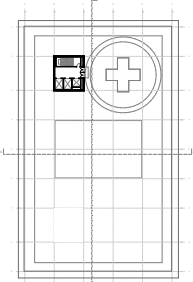


VI. OPERATING UNIT

VII.

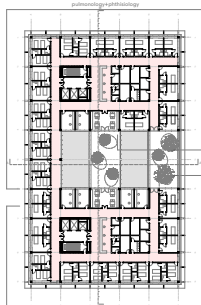


VII. TECHNICAL FLOOR



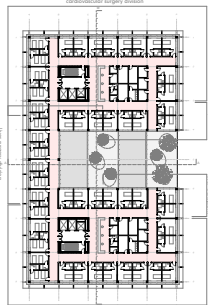
ROOFTOP - HELIPORT

II.



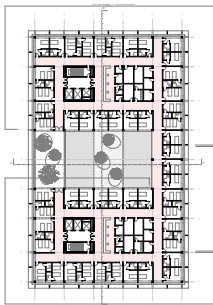
II. FLOOR  
WARD - PULMONOLOGY+PHTHISIOLOGY AND THORACIC DEPARTMENT

III.



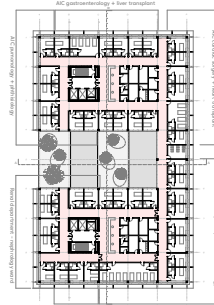
III. FLOOR  
WARD - GASTROENTEROLOGY+LIVER, CARDIAC+HEART TRANSPLANT DEPARTMENT

IV.

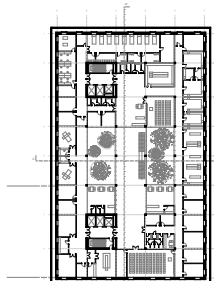


IV. FLOOR  
WARD - RENAL TRANSPLANT AND UROLOGY DEPARTMENT

V.

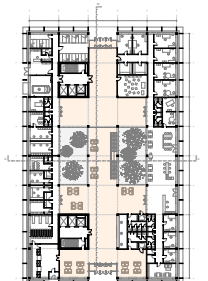


-I.



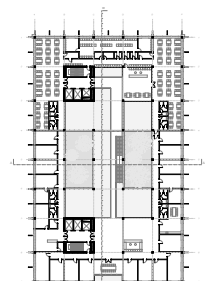
-I. FLOOR  
LABORATORIES, RESEARCH, PATHOLOGY, RADIOLOGY/IMAGING

O.



GROUND FLOOR  
ENTRANCE, OUTPATIENT CLINIC, PHARMACY, CHAPEL, EMERGENCY

I.



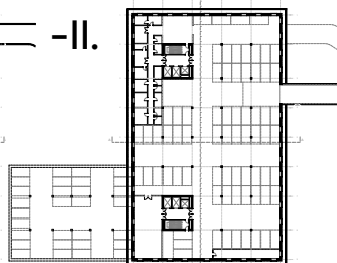
I. FLOOR  
RESTAURANT, ADMINISTRATION, TRANSFUSION

-III.



-II. FLOOR  
GARAGES, STORAGES

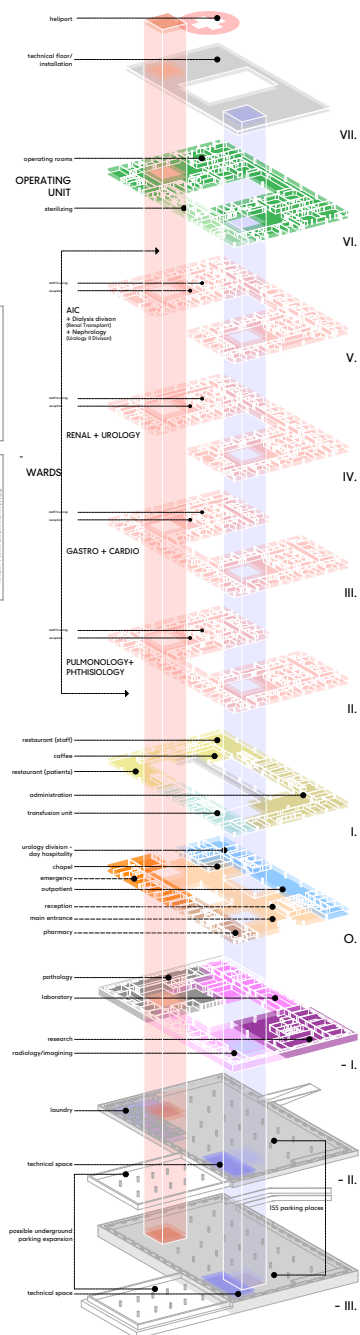
-II.



-III. FLOOR  
GARAGES, LAUNDRY, STORAGES



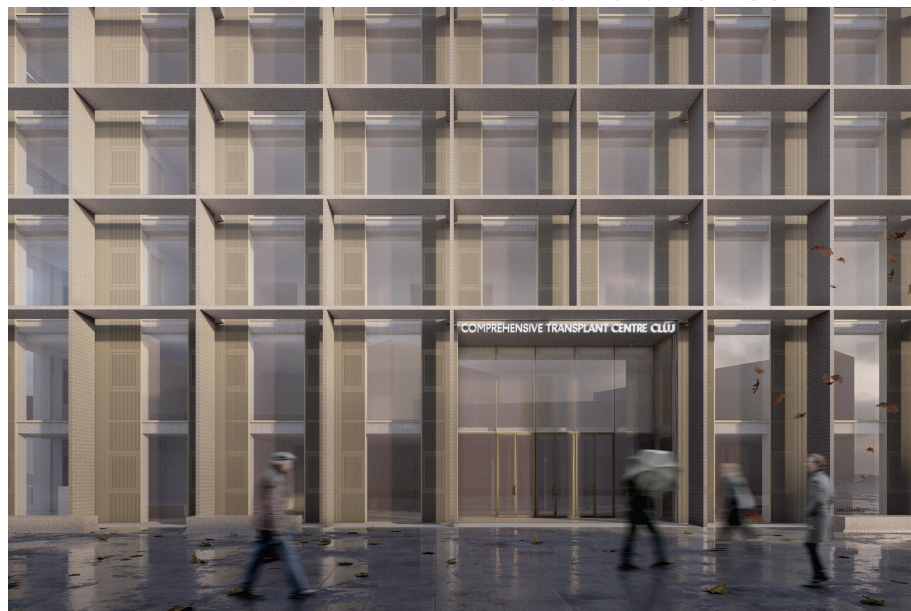
FLOOR PLANS  
scale 1:500



SCHEMATIC PRESENTATION - AXONOMETRY



PERSPECTIVE FROM VICTOR BABES STREET



PERSPECTIVE FROM ALEEA STUDENTILOR - MAIN ENTRANCE