

Functional order

The building will have three entrances: the main entrance in front of the building will be open for patients and visitors. This entrance is directly connected to the representative three-level lobby space. From here you can access the public and semi-public zones (outpatient unit, administration, research, restaurants). These functions can also be reached directly from the staircase towers.

(The downstairs pharmacy has direct external access.)

The emergency entrance is located at the back of the building.

The building will have three entrances: the main entrance in front of the building will be open for patients and visitors. This entrance is directly connected to the representative three-level lobby space. From here you can access the public and semi-public zones (outpatient unit, administration, research, restaurants). These functions can also be reached directly from the staircase towers.

(The downstairs pharmacy has direct external access.)

The emergency entrance is located at the back of the building.

The building will have three entrances: the main entrance in front of the building will be open for patients and visitors. This entrance is directly connected to the representative three-level lobby space. From here you can access the public and semi-public zones (outpatient unit, administration, research, restaurants). These functions can also be reached directly from the staircase towers.

(The downstairs pharmacy has direct external access.)

The emergency entrance is located at the back of the building.

The building will have three entrances: the main entrance in front of the building will be open for patients and visitors. This entrance is directly connected to the representative three-level lobby space. From here you can access the public and semi-public zones (outpatient unit, administration, research, restaurants). These functions can also be reached directly from the staircase towers.

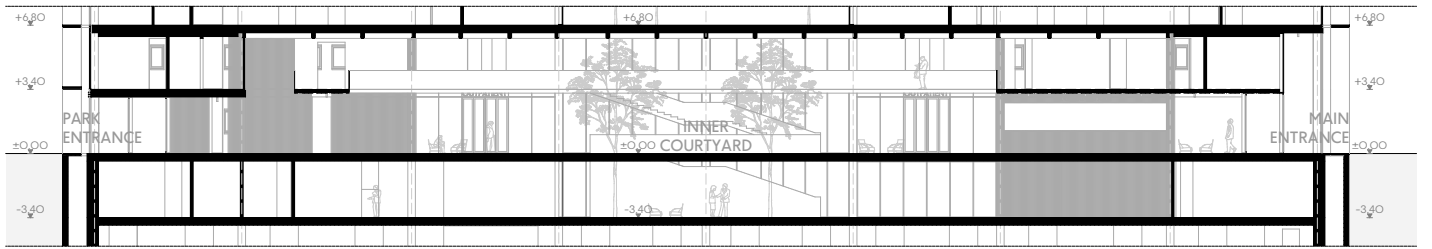
(The downstairs pharmacy has direct external access.)

The emergency entrance is located at the back of the building.

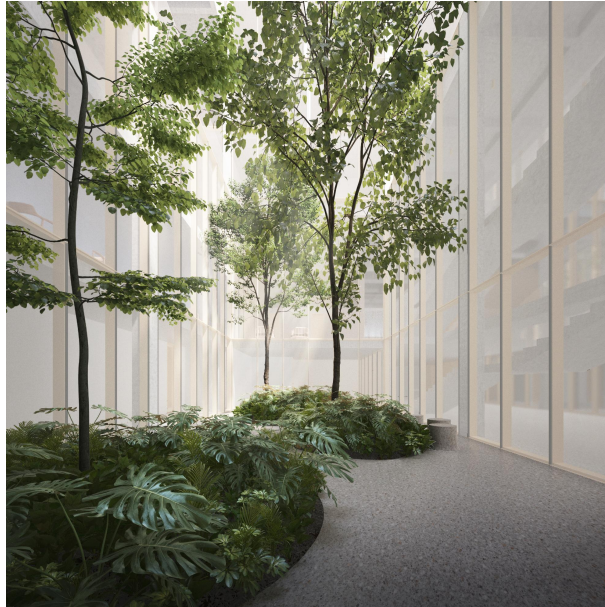
- |                        |                       |
|------------------------|-----------------------|
| Pharmacy               | Outpatient clinic     |
| 1. Office              | 18. Office            |
| 2. Pharmacy storage    | 19. Office            |
| 3. Lab & prescription  | 20. Storage           |
| 4. Cool storage        | 21. Storage           |
| 5. Dangerous materials | 22. Consult and       |
| 6. Surgery             | 23. examination       |
| 7. Office              | 24. Storage           |
| 8. Storage             | 25. dialysis division |
| 9. Test kitchen        | 27. Consultation room |
| Emergency              | 28. Waiting area      |
| 10. Medical room       | 29. Reception         |
| 11. Medical room       | 30. Medical suite     |
| 12. Test kitchen       | 31. Medical suite     |
| 13. Critical care      | 32. Medical suite     |
| 14. Ambulance          | 33. Medical suite     |
| 15. Emergency entrance | 35. Staff             |
| 16. Observation        |                       |
| 17. Observation        | 35. Chapel            |



GROUND FLOOR PLAN  
scale 1:100



SECTION THROUGH THE ENTRANCE  
scale 1:100



INTERIOR PERSPECTIVE ABOUT THE COURTYARD



INTERIOR PERSPECTIVE ABOUT THE ENTRANCE