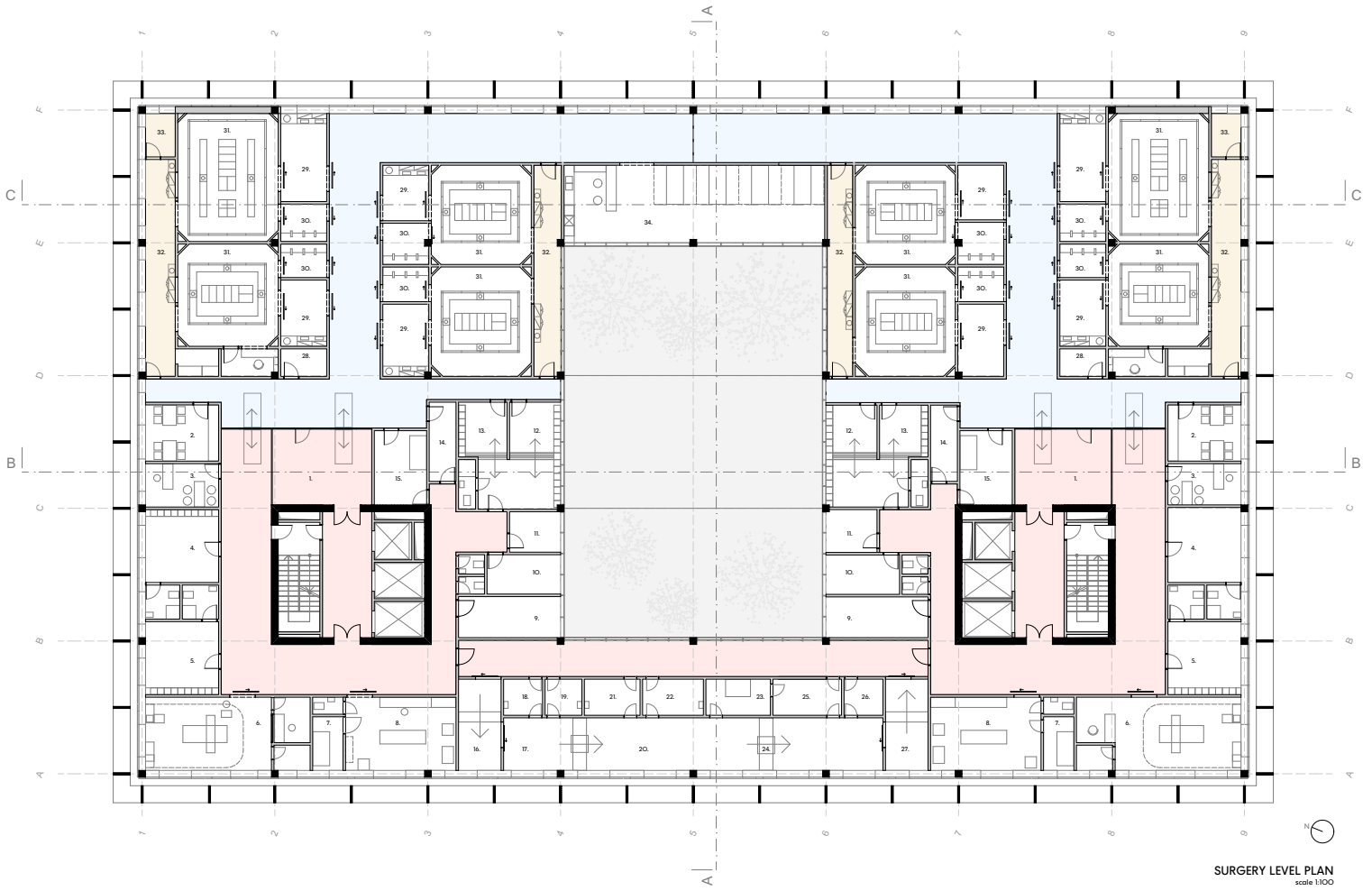


Sustainability - Energy concept

The sustainability strategy has two main aspects: the compact mass of the building and the shading system. The compact shape helps to minimize the cooling surface of the house. This compactness is also reflected in the floor plan design: the length of the corridors are as small as possible, thus significantly shortening the patient routes.

The shading system is made of 12 cm brick walls and concrete slabs. These external facade elements help to prevent the building from heating up or cooling down easily. Both elements are distanced from the facade with 25 cm allowing the warm air to flow up in front of the glass. In the inner courtyard the facade structure is made of the simple curtain wall system, here there is no direct sunlight and the natural lighting conditions are different.

- | | | |
|--------------------------------|---------------------|------------------------|
| 1. Preparation | 16. Reagent | 25. Cleaner warehouse |
| 2. Resting room | 17. Sink room | 26. Preparation room |
| 3. Nurse change room | 18. Lock in | 27. Wash room |
| 4. Staff change room | 19. Reagent | 28. Operating theatre |
| 5. X-ray | 20. Packing room | 29. Sterile corridor |
| 6. Changing room | 21. Lock in | 30. Medicine warehouse |
| 7. Control room | 22. Materials | 31. Recovery room |
| 8. Endoscopy | 23. Plasma sterile | |
| 9. Storage | 24. Autoclave | |
| 10. Office | 25. Sterile storage | |
| 11. Office | 26. Storage | |
| 12. Doctor locker room - dirty | 27. Transfer room | |
| 13. Doctor locker room - clean | | |
| 14. Laundry | | |
| 15. Line of stretcher | | |



SURGERY LEVEL PLAN
scale 1:100



C-C SECTION THROUGH THE SURGERY LEVEL
scale 1:100



EXTERIOR PERSPECTIVE FROM HASDEU STREET



EXTERIOR PERSPECTIVE FROM VICTOR BABEA STREET