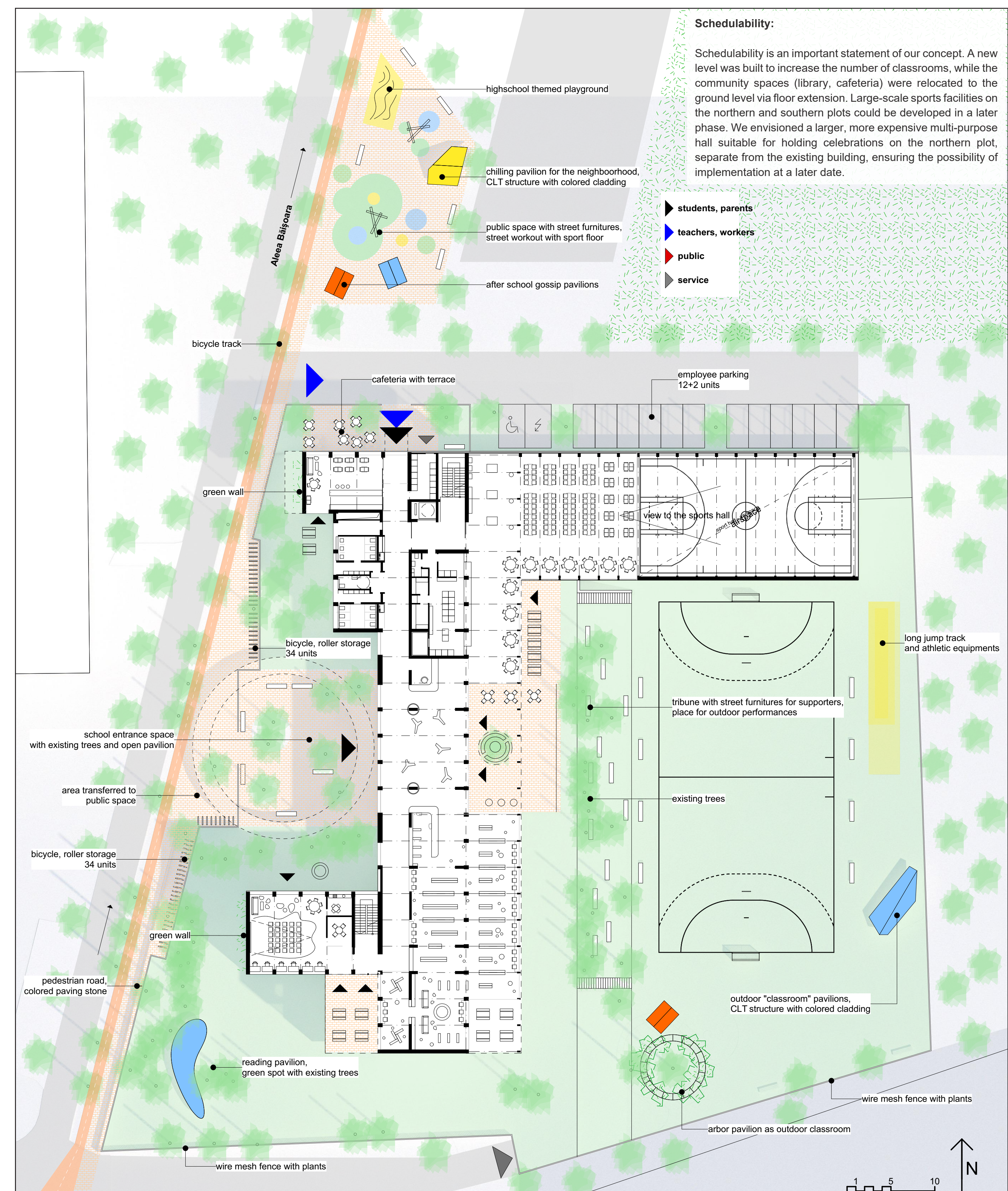


north site plan_elementary school_M 1:300



south site plan_highschool_M 1:300

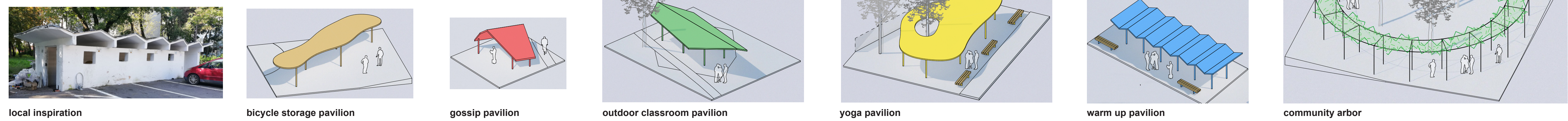
Schedulability:
Schedulability is an important statement of our concept. A new level was built to increase the number of classrooms, while the community spaces (library, cafeteria) were relocated to the ground level via floor extension. Large-scale sports facilities on the northern and southern plots could be developed in a later phase. We envisioned a larger, more expensive multi-purpose hall suitable for holding celebrations on the northern plot, separate from the existing building, ensuring the possibility of implementation at a later date.

- students, parents
- teachers, workers
- public
- service

Inner garden and courtyard as "learning landscape"

Small-scale pavilions appear in the intensive green axis and in the schoolyards, supporting various recreational functions. The pavilions' geometric, formal simplicity was inspired by the works of Constantin Brancusi. These CLT-structured pavilions, like Brancusi's sculptures, are also "carvings," and because there are several of them, both on the site and in public spaces, they form a visual identity system. The wooden structures are covered with colored metal sheeting. The birdhouse is the smallest visual identity component, while the sports hall on the northern site is the largest.

concept of pavilions_elements of the "learning landscape" M 1:200



local inspiration

bicycle storage pavilion

gossip pavilion

outdoor classroom pavilion

yoga pavilion

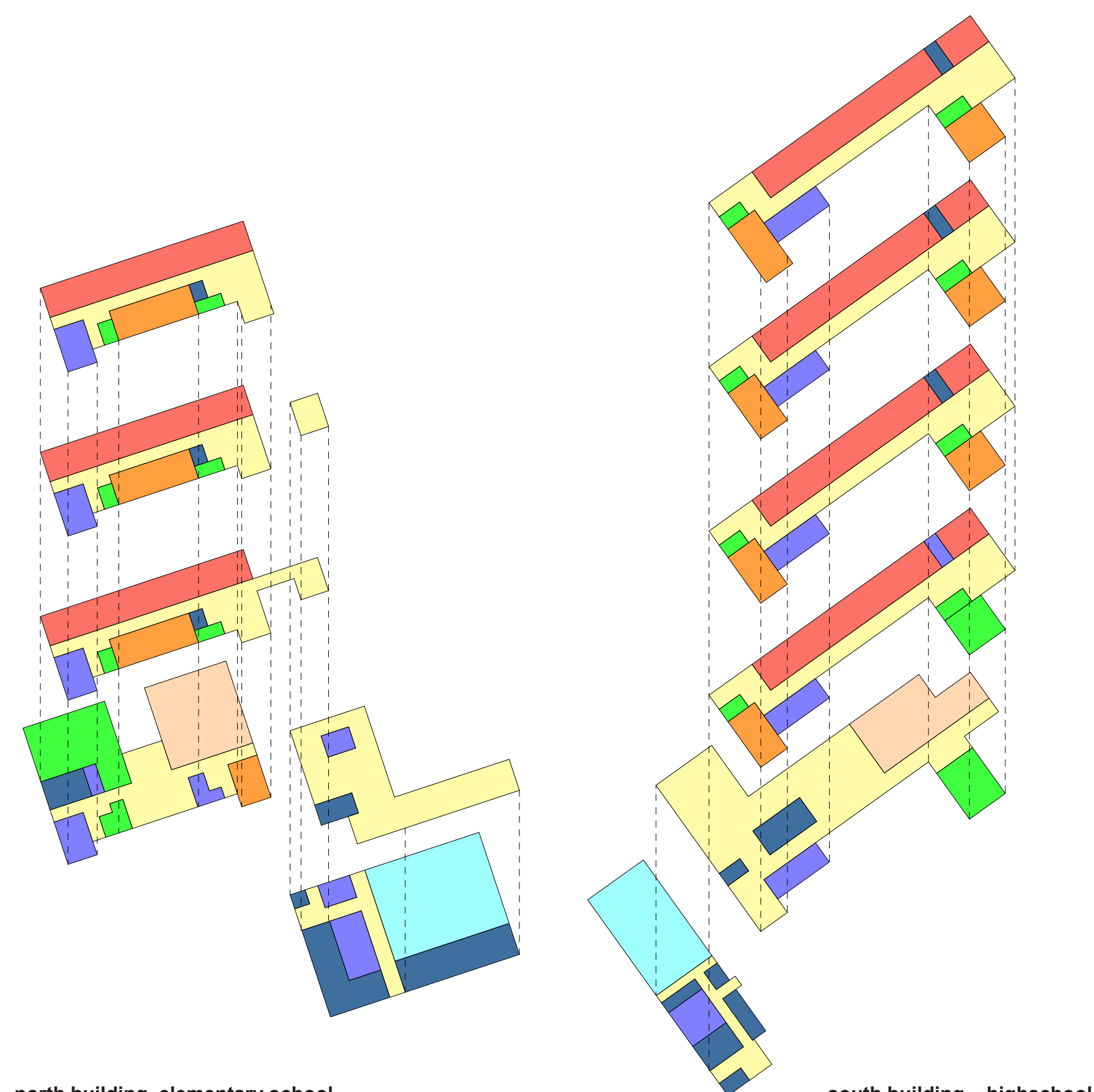
warm up pavilion

community arbor

ANNEX - AREA TABLE - LUCIAN BLAGA THEORETICAL HIGHSCHOOL INTERNATI

Important: the values will be filled-in in the indicated colored cells (light orange)

| URBAN INDICATORS | NORTH | | SOUTH | |
|---|---------|---------|-------|----|
| | MP | MP | MP | MP |
| BUILT AREA | 3684 | 2713 | | |
| POT (land occupancy percentage) | 36.36% | 38.37% | | |
| GROSS BUILDING AREA | 2461 | 2023 | | |
| CUT (land usage coefficient) | 0.24289 | 0.2861 | | |
| AREAS | NORTH | SOUTH | | |
| SCHOOL | 4180 | 4554 | | |
| CLASSROOMS | 750 | 1296 | | |
| LABORATORIES | 366.1 | 531.76 | | |
| ANNEXES, TEACHERS' OFFICES | 223.21 | 296.8 | | |
| CIRCULATIONS | 739.21 | 836.47 | | |
| RECREATIONAL SPACES* | 768.23 | 1103.22 | | |
| ADMINISTRATIVE SPACES* | 95.6 | 42 | | |
| TEACHER'S ROOM | 290.64 | 143 | | |
| TECHNICAL SPACES | 354.69 | 349 | | |
| COMMON LEARNING SPACES* | 479.35 | 652.26 | | |
| LIBRARY | 285 | 322.66 | | |
| SPORTS HALL (INCL. ADJACENT CONNECTED SPACES) | 782 | 457 | | |
| HALL OF FESTIVITIES | 881 | 847 | | |
| TOILETS | 241.3 | 226.5 | | |
| SCHOOL YARD | | | | |
| COURTYARD AREA | 6497 | 4211 | | |
| SPORTS GROUNDS | 2056 | 1376 | | |
| PLAY AND SPORTS SPACES | 2213 | 1785 | | |
| GREEN SPACE | 6047 | 3790 | | |
| RECREATIONAL SPACE* | 3300 | 2574 | | |
| ALLEYS | 1339 | 1006 | | |

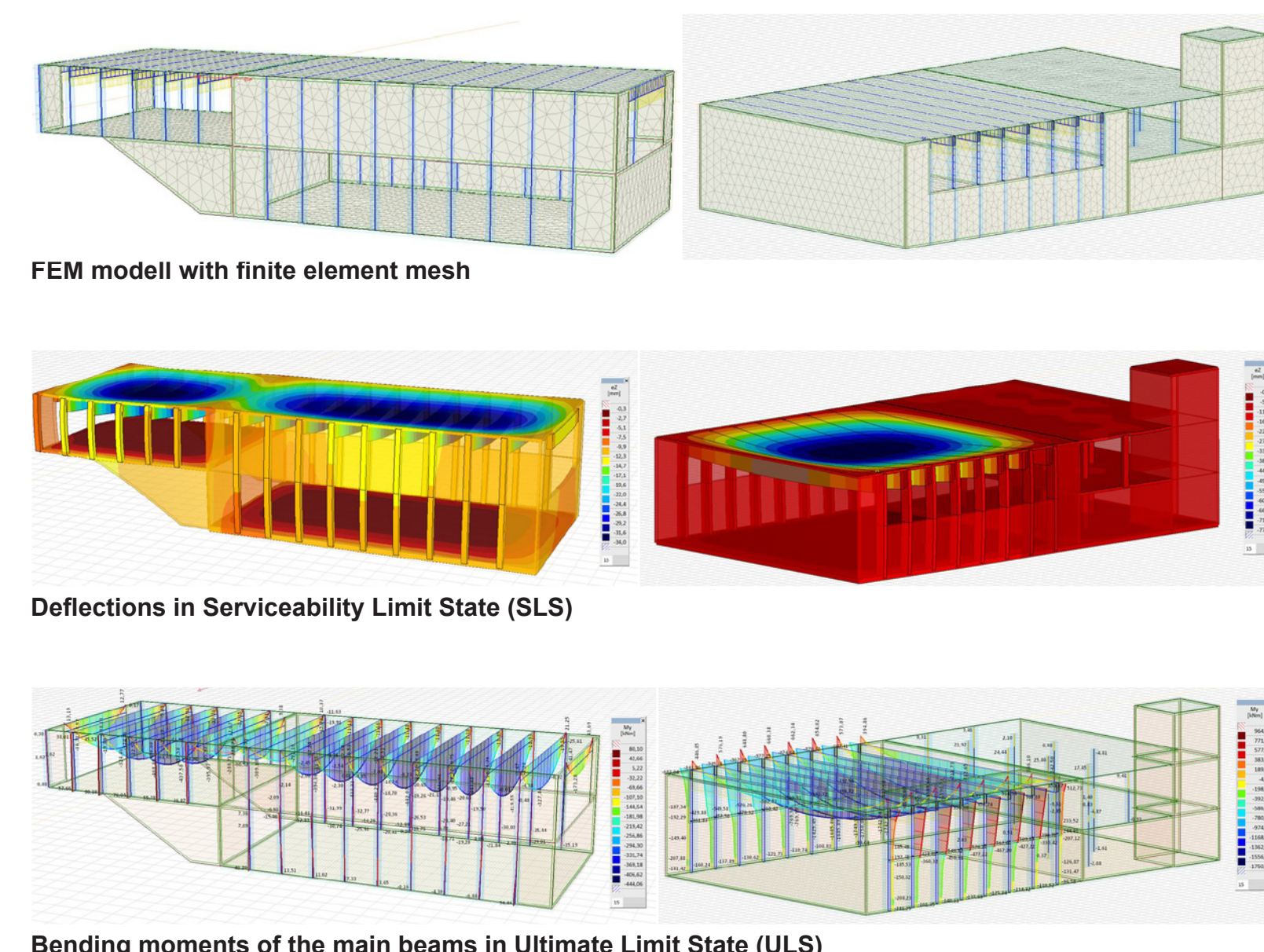


north building_elementary school functional schemes_M 1:1000

south building_highschool

- community spaces
- classrooms
- laboratories
- teachers/offices
- library
- multifunctional halls
- toilets, lockers
- technical rooms/storage

structural concept of the halls



Cafeteria, canteen:
The canteens have a hot kitchen and a capacity of 190 people. Both are located on the ground floor, with garden access and a strong visual connection to the sports hall.

Library:
Both of the libraries are located on the ground floor extension with a strong functional and visual connection to the courtyard. All additions are made from CLT, therefore larch surfaces dominate the library spaces.



perspectives from courtyard_north site_elementary school



perspectives from courtyard_south site_highschool

Use of materials, structural solutions:
External thermal insulation of 20 cm and light grey plaster will be applied to the existing pillar-framed buildings. In the interiors, we have aimed to minimize the cladding, embracing the honest rusticity of the structure. Additions and extensions are lightweight, made of prefabricated CLT panels and glued timber frames with large curtain wall openings. These spaces are dominated by larch surfaces and light.